

# Keyscan Access Control Systems



Product Catalog



A woman with brown hair tied back, wearing a white lab coat, is shown in profile. She is holding a small white proximity card up to a modern, silver-colored door lock. The lock has a green indicator light and a small circular logo. The background is a bright, modern interior with large windows and glass partitions.

# Networked access control solutions

Protecting people and every place that matters



## Identify. Authenticate. Control.

Our mission is to protect people and every place that matters. Holding true to our mission, we invest in innovation to develop access control solutions that you can trust.

Keyscan electronic access control systems deliver a broad spectrum of innovative solutions that combine convenience with performance to provide controlled access for all entry/exit points throughout any facility.

Our systems offer three levels of secure building access: identify, authenticate and control. The identify level is the ability to perform electronic identification of all persons moving within a controlled facility environment. The authentication level is the software technology to confirm identification of an individual and compare to set permissions assigned to that individual, while the control level grants or denies access based on successful identification and authentication levels.

Our access systems offer unparalleled integration options with other dormakaba product portfolios as well as third party partnerships offering you enhanced access technologies that provide greater connectivity and performance.

To ensure our access control solutions perform at the highest level, we partner with a skilled network of service and installation dealers and integrators across North America, and beyond. You can rely on dormakaba for exceptional product support, including installation, retrofit, replacement and maintenance.

Together with first class aftermarket sales and technical support, our priority will always be adding value for our customers and esteem to our brands.

dormakaba is a premier provider of total security solutions to the K-12 school, lodging, multifamily housing, senior living, college and university, healthcare, commercial, retail, sports and entertainment and airport industries.

# Keyscan Aurora software

## Performance and sustainability



The Keyscan access control system provides a secure, yet transparent solution for facilities requiring authorized access to secured areas. The Aurora software solution is the cornerstone of dormakaba's approach to access control.

Integration is a common thread for optimizing access control systems. With an emphasis on performance and sustainability, Keyscan Aurora access control software provides just that.

With many features and integration options, it provides a single solution for access control with no limiting or expansion governors or recurring fees. Keyscan Aurora is ideal for any access control application, regardless of size.

### Benefits

- Web client user interface - control your system from any web-enabled PC or mobile device
- Enhanced network-based lockdown - ideal for any emergency response plan
- Centrally managed access control (SaaS ) available
- Software Development Kit (SDK) or Application Programming Interface (API) license for custom integrations
- Multi-language support (English, French, Spanish and Portuguese)
- Add-on modules and optional licensed modules for enhanced functionality including biometrics, visitor management, intrusion systems and much more.



### Aurora web client

Interface allows limited management of your system from any location using web-enabled computers or devices.



### SQL upgrade

Upgrade to full SQL database removing the 10GB limit. Requires server, OS and appropriate licensing for SQL server 2017 64-bit.



### Enhanced lockdown

Allows users to initiate custom, network-based, lockdown response scenarios, including E-Plex wireless locks, by clicking an icon on their PC desktop or tapping a credential at any reader.



### Video management

Allows Aurora users to open and utilize client VMS software from leading video management manufacturers.



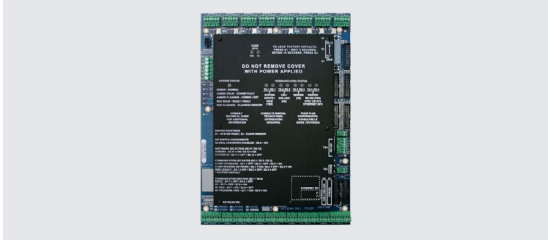
### Active directory

Users' Active Directory profiles may be linked to expedite system user permissions and activities with Aurora.



# Door controllers

## Keyscan CA Series



Our networked access control systems deliver a broad spectrum of innovative solutions that combine convenience with performance to provide controlled access for all openings throughout a facility. Our systems offer security, sustainability and reliability. Security controls building access. Sustainability ensures innovative technology and integration options allowing your system to meet your needs well into the future. Reliability ensures performance keeping everyone secure at all times.

dormakaba's Keyscan CA series door controllers provide maximum system design flexibility. Available in 1, 2, 4, or 8 door module designs, our compatible CA and EC access control units can be unified to satisfy applications for any facility.

### Door controller features:

- Network TCP/IP ready (with NETCOM)
- Easily configurable reader settings supporting Wiegand protocols
- Up to 6000 transactions retained in transaction buffer with auto-upload protocol if communication is interrupted
- Dual processors
- DHCP supported
- Expanded flash memory allows for up to 45,000 total credentials
- Global communication among multiple controllers, server and sites\*\*
- Accommodates hundreds of time schedules and/or group levels
- Multiple inputs and outputs for expansion capability



**CA200 2-reader control unit**  
Includes:

- CA250B ACU board
- 1 - OCB8 relay board
- 1 - DPS-15 power supply
- 1 - black metal enclosure with lock and tamper switch



**CA4500 4-reader control unit**  
Includes:

- CA4500B ACU board
- 1 - OCB8 relay board
- 1 - DPS-15 power supply
- 1 - black metal enclosure with lock and tamper switch



**CA8500 8-reader control unit**  
Includes:

- CA8500B ACU board
- 2- OCB8 relay boards
- 1 - DPS-15 power supply
- 1 - black metal enclosure with lock and tamper switch



# Elevator floor controllers

## Keyscan EC Series



dormakaba's Keyscan EC series elevator floor controllers are designed to secure access to office or residential floors by prompting user credential-holders to present their assigned credential when using the elevator.

Available in 1 and 2 cab module designs, our compatible EC and CA control units can be unified to satisfy applications for any facility.

The EC controller series will also update or augment aging systems while, in many cases, utilizing existing infrastructure.

### Elevator floor controller features:

- Network TCP/IP ready (requires NETCOM)
- Easily configurable wiegand reader settings
- Up to 6000 transactions retained in transaction buffer with auto-upload protocol if communication is interrupted
- Dual processors
- DHCP supported
- Expanded flash memory allows for up to 45,000 (max 90,000\*)
- Global communication among multiple controllers/server sites\*\*
- Accommodates hundreds of time schedules and/or group levels
- Inputs and outputs for OCB8 expansion capability

\*with special order hardware

\*\* requires CIMs and CIM Link communication modules



### EC1500 1-cab elevator elevator floor controller

Includes:

- EC1500B ACU board
- 1 - OCB8 relay board
- 1 - DPS-15 power supply
- 1 - black metal enclosure with lock and tamper switch



### EC2500 2-cab elevator elevator floor controller (Supports 2 Cabs/ 2 readers)

Includes:

- EC2500B ACU board
- 1 - OCB8 relay board
- 1 - DPS-15 power supply
- 1 - black metal enclosure with lock and tamper switch





# Keyscan CA150

## Single door controller

When it comes to performance, and overall capability, the CA150 is comparable with our full line of access control units. CA150 is ideal for a single-door deployment or to augment an existing Keyscan access control system with a need for one additional door.

### Keyscan CA150 features:

- Network connectivity with built-in PoE ready TCP/IP module
- PoE mode to transmit power for reader, strike, and other auxiliary devices, up to 680mA (requires PoE injector).
- DHCP supported
- Dual Processors
- Flash Memory
- Two reader ports
- Requires Aurora software

# Keyscan LUNA

## Single door access control

Keyscan LUNA™ is a comprehensive software solution specifically designed for small caliber access control installations. It is ideal for small business.

Keyscan LUNA software is used to program Single Door Access Control Units (SDACs) as well as select E-Plex offline electronic locks (requires M-Unit handheld Part 75427).

Each SDAC secures one door, with one or two readers, and can power one electric locking device. It connects to LUNA software using Wi-Fi point-to-point or WLAN.

### Keyscan SDAC features:

- Wi-Fi or WLAN connectivity
- Two reader ports (in/out)
- Lock relay – form C dry contacts
- Flexible installation

### LUNA software features:

- Complimentary software download ([www.dormakaba.us/LUNASoftware](http://www.dormakaba.us/LUNASoftware))
- Easy to use with encrypted database
- No licensing or recurring fees
- One copy of LUNA can manage up to 6 SDAC units and unlimited offline E-Plex locks
- Selectable filter transaction reports



# High security readers and credentials

13.56MHz high-frequency



Secure access points in any facility must be monitored and authenticated. Our selection of high security readers validate identity and authorize individual access creating secure areas throughout your facility.

Our selection of high security readers and credentials are available in many forms including Keyscan K-SMART3 series, RCI CSR series, the new HID Signo series as well as UHF (ultra high frequency).



## K-SMART3

- Supports Keyscan Mobile Credentials
- Functions with Keyscan DESFire EV2, K-SECURE 1K / 4K physical credential series
- Reads proprietary and 36-bit formats



## K-SMART3KM / KW

- Smartcard keypad readers with support for Keyscan Mobile Credentials
- Functions with Keyscan DESFire EV2, K-SECURE 1K / 4K physical credential series
- Reads proprietary and 36-bit formats



## DESFire EV2

- High security credentials
- Ideal for diverse applications
- Provides a range of backward compatibility
- Functions on existing Keyscan high-frequency systems



## K-Secure

- Equipped with anti-counterfeiting, anti-duplication and AES multilayer encryption technology
- Complies with international interoperability (ISO14443) standards for 3rd party applications

## 13.56MHz high-frequency



dormakaba offers a wide range of 13.56MHz high-frequency credentials designed to function with our reader series. They are available as clamshell cards, ISO graphics quality cards, fobs and adhesive tags. Added security is also offered with Keyscan 36 bit credential format. No matter what your need, you can rely on dormakaba's 13.56MHz credentials.



### RCI CSR Series readers and credentials

- Readers for either mullion and single gang installations
- Supports wiegand and OSDP protocols
- Available as keypad reader in single gang or mullion mount
- Functions with credentials CSC-2, CSK-2, CSM-2P, CSM-2S, and CMC-2 (mobile) and more



### UHF Readers and credentials

- Advanced encryption
- Secure ultra-high frequency solution
- Functions with credentials KI4KSEUHF or KI4KSEUHF (dual UHF and SE credential)



### HID Signo Series readers and credentials

- New multi-technology readers designed to replace all HID iCLASS SE and SE Legacy reader models
- Three models KS-0, KS-1 and KS-2 each replace respective legacy readers and are backward compatible with existing credentials
- KS-1 and KS-2 models replace iCLASS SE with Seos and iCLASS SE and SE legacy readers
- Will function with I8KSEOS, IDSOSE credentials as well as I2K2PSR36, F2K2PSR36, and T2K2PSR3 public key credentials (see HID Signo Fact Sheet for details)

# Standard security readers and credentials

## 125 kHz standard frequency



Secure access points must be monitored and authenticated. Our selection of standard security readers validate identity and authorize individual access creating secure areas throughout your facility.

Our selection of standard security readers are available in many formats including Keyscan K-PROX3, K-PROX3KM/KW as well as Farpointe series, RCI series and the new HID Signo KS-0 reader series.



### K-PROX3

- Prox reader with dedicated features designed for exclusive use with Keyscan Present3 and facility lockdown
- Keyscan 36 bit, Farpointe and HID 125 kHz 26 bit credentials
- Reads proprietary and 36-bit formats



### K-PROX3KM / KW

- Proximity keypad readers with support for Keyscan Mobile Credentials
- Functions with Keyscan 36 bit, Farpointe and HID 125 kHz 26 bit credentials
- Reads proprietary and 36-bit formats
- Mullion Mount (KM) and Wall Mount (KW) available



### K-VAN

- Vandal resistant proximity reader
- Functions with Keyscan 36 bit, Farpointe and HID 125 kHz 26 bit credentials
- Ideal reader for indoor or outdoor applications where aggressive behavior, crime or high-threat environments could be expected



### CS125-36

- For use with Keyscan readers K-PROX3, K-PROX2, K-KPR , and K-VAN readers , Farpointe P-620; P-710, P-900 series as well as most HID 125 kHz technology readers
- Complies with international interoperability (ISO14443) standards for 3rd party applications

## 125 kHz standard frequency



dormakaba offers a wide range of 125 kHz standard-frequency credentials. They are available as clamshell cards, ISO graphics quality cards, Fobs and adhesive tag styles.

Added security is also offered with Keyscan 36 bit credential format. Rely on dormakaba's selection of 125 kHz readers and credentials.



### Farpointe Readers & Credentials

- Quality 125-kHz proximity readers and credentials
- Support wiegand protocol
- Ideal, cost effective, alternative for other brands
- Available in many models and ideal for doors, parking and turnstile applications
- Functions with credentials PSM-2P-H; PSK-3-H; PDT-1-H as well as RCI, Keyscan, Farpointe and many others



### RCI Readers & Credentials

- Contactless RFID technology
- Interface with many systems
- Support wiegand and OSDP protocol
- Features MAXSecure™ and fleaPower™
- Multiple models to suit any application
- No batteries or maintenance required
- Functions with credentials PSC-1-H, PSI-4-H, PSM-2P-H, PSM-2S-H, PSK-3-H, PDT-1-H, DE2-125 as well as RCI, Keyscan, Farpointe and many others



### HID Signo Series Readers & Credentials

- Multi-technology readers designed to replace all HID Prox and Keyscan Indala reader models
- Three models KS-0, KS-1 & KS-2 each replace respective legacy readers and are backward compatible with most existing credentials
- KS-0 model replaces a host of 125kHz technology HID readers and Keyscan Indala readers. It functions with IDSOPRX, I2K2PSR36, F2K2PSR36, T2K2PSR36, C1325, C1386, C1391, PROXKEYIII, PXKEY, PX-C1, PX-STKTAG, PX-ISO30 and more (see HID Signo Fact Sheet for details)

# Mobile access digital credentials



Our Keyscan Mobile Credential brings convenience to commercial facilities secured with Keyscan access control systems. System administrators now have the option to issue mobile credentials and authorize access to entrances, elevators, parking areas and other exit/entry points throughout commercial buildings.

Keyscan Mobile Credential is a cloud-based credential delivery app for use with Keyscan access control systems equipped with mobile compatible readers and Keyscan Aurora software or Keyscan LUNA software. The mobile mindset of today's generation demands choice and convenience. We've become an online, on demand, digitized culture that expects interactive technology to deliver intuitive, self-guided and personalized user experiences.

## Benefits of Keyscan Mobile Credentials:

- Non-intrusive with simple one-time mobile device registration
- Mobile credentials remain secure and protected behind password or biometric security of a mobile device
- Quick, one-time, onboarding process for K-MOB standard mobile credentials
- No manufacturer cloud portal account required
- User can store up to 10 mobile credentials on a single device
- Unique site code also available

## How to purchase:

**K-MOB** - Standard Keyscan Mobile Credentials can be purchased through Distribution and will function within any Keyscan Aurora or LUNA environment. Contact your preferred distributor for details.

Available in packages of 10, 25, 50 or 100

Limited support for Android legacy

**K-BLE** - Registered Mobile Credentials must be purchased direct from dormakaba. These require an RSA key generated from your Keyscan Aurora (1.0.16 or later) or Keyscan LUNA (1.0 or later) software. These credentials are then programmed to function only with your software platform

Available in packages of 10 or 50

To inquire, contact our mobile credential administrator at 1 888 539-7226. Limited support for Android legacy





# Wireless RF Solutions

## Receivers and transmitters

### KeyScan K-RX Wireless Receiver and Transmitters

The KeyScan K-RX wireless receiver is a good selection for parking garage, gate and other long-range applications. Functions with K-TX2, K-INTX2 or K-TX2-1K (13.56MHz) transmitter fobs from up to 200 feet. Transmitters can also function as a fob within your facility.



### Receiver

- K-RX wireless receiver
- K-RX-1

### Transmitters:

- 4 Button: K-TX2 (HID coil); K-INTX2 (indala coil)
- K-TX2-1K (13.56MHz - for use with K-SMART3, K-SMART and K-SKPR high security readers)
- K-TX2-EV2 4- button wireless transmitter (DESFire EV2 for use with K-SMART3 high security readers only)
- K-TX2-1KB 4- button wireless transmitter (SRK for use with KeyScan SRK readers for use in Multifamily Housing/Lodging integrated applications)

# Locking Systems

## wireless, offline and keyless

dormakaba's electronic locks offer efficient security for any size facility. The E-Plex and PowerPlex series of locks create a range of system options. Electronic locks allow you to set user schedules and review PIN and/or card access remotely. The series is available as a stand-alone access solution for a single door or can be

programmed into an enterprise solution that can span multiple facilities and thousands of doors; plus, wireless integration for Keyscan access control systems.



### **E-Plex 7900 wireless and offline RFID locks**

E-Plex 7900 series electronic RFID locks are available in mortise, cylindrical and exit trim options to augment your access control system with wireless or offline electronic RFID locks. E-Plex 7900 offers reliable security and versatility for any access control applications (programming offline locks with Aurora or LUNA requires M-Unit handheld Part 75427).

#### **Available models:**

E-Plex 7900	RFID functions with 13.56 MHz smart card credentials see Keyscan Price Book for available models
-------------	---



### **PowerPlex 2000 keyless self-powered lock**

The self-powered electronic lock generates its own power through PowerStar™ technology, making it the most efficient and versatile electronic lockset available with virtually no maintenance costs. No batteries. No wires. No problems.

#### **Available models:**

P2031KK	Self-powered electronic keyless lock
P2031KB	Self-powered electronic keyless lock - No cylinder (Best)

# Integrated Software Solutions

## More than the sum of all parts

dormakaba has a proven track record of understanding and solving the complex challenges of integrated building access and security. Our goal is to provide sustainable access solutions that create a safety-forward culture for protecting people and property.

Our suite of access management software platforms are engineered to function in tandem. We offer reliable solutions

designed to support the growing demand for integrated access technologies that provide greater connectivity and performance.

Our comprehensive product portfolios are powerful examples of our dedication to providing premium security and access systems that perform as designed throughout the life of your building.

### Aurora integration solutions for unique multifamily housing and lodging applications



Keyscan Aurora integrates with dormakaba's Community™ and Ambiance™ access management software platforms. This integration is designed for unique back-of-the-house access control for multifamily housing or lodging properties.

Whether you are managing a hotel/resort or market rate apartments, privatized student housing or senior living facilities, dormakaba now offers a centralized interface to manage all aspects of property access control from individual living spaces to property perimeter.

### SMART elevator systems integration

Keyscan Aurora systems can also integrate with select SMART elevator passenger management systems from KONE and ThyssenKrupp. These innovative elevator dispatch systems provide huge advantages, including:

- Improved efficiency of building and elevator traffic and waiting time
- Grouping passengers, for the same destinations, into the same elevator
- Authenticated Keyscan Aurora user permissions to grant or deny access to destination floors
- Provides full reporting on elevator activity and usage through the Aurora or system reporting structure

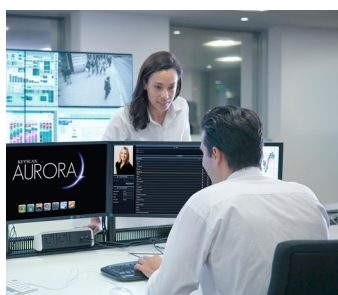


# Trusted solutions to secure your facility

dormakaba access control systems provide centralized access control for all entry and exit points in your facility.



**Electronic access control solutions**



**Keyscan Aurora access control software**



**Readers and credentials**



**Integrated access control solutions**



**RCI Electronic door controls**



**RCI Electric Strikes**



**Keyless locks**



**Electronic wireless locks**



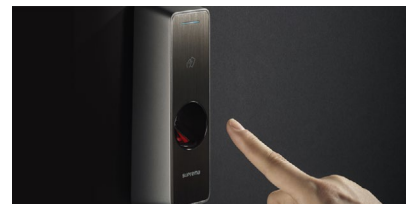
**Digital mobile access Credentials**

The Keyscan access control solution offers three levels to secure building access:

1. **Identify:** is the ability to perform electronic identification of all people moving within a controlled facility environment.
2. **Authentication:** is software technology to confirm identification of an individual and compare it to the permissions assigned to that individual.
3. **Control:** grants or denies access based on successful identification and authentication.

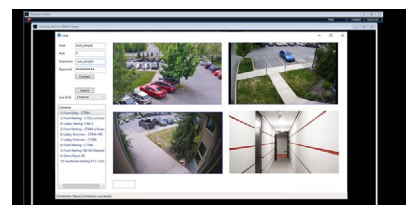
### Biometrics

Keyscan Aurora software now integrates with BioConnect software to give you functionality with biometric readers for your access control system. Biometric security devices provide an ultra-high level of security, at the right places. They adjust dynamically to the level of authentication necessary for ever-changing threat levels.



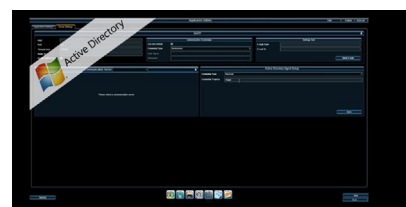
### Video management systems (VMS)

This integration module allows Keyscan Aurora software users to access VMS features and/or retrieve video feeds through a viewer in the Aurora interface. When licensed, Keyscan Aurora software interface couples access control and video management into one convenient platform.



### Active Directory

Keyscan Aurora features expanded license for Active Directory integration. With the new Keyscan Aurora release, people may be linked to their Active Directory record. Active Directory expedites system user permissions and day-to-day activities with Aurora including addition of people, revoking of access privileges, assignment of site, group permission, and person information synchronization.







Door  
Hardware



Electronic  
Access & Data



Mechanical  
Key Systems



Lodging  
Systems



Entrance  
Systems



Interior Glass  
Systems



Safe  
Locks



Service

## Our Sustainability Commitment

We are committed to fostering a sustainable development along our entire value chain in line with our economic, environmental and social responsibilities toward current and future generations.

© dormakaba 2026 Information on this sheet is intended for general use only. dormakaba reserves the right to alter designs and specifications without notice or obligation. All trademarks are the property of their respective owners.

EAD\_1106\_CA\_EN\_01-2026  
Subject to change without notice

**dormakaba Canada Inc.**  
105 Marcel-Laurin Blvd  
Montreal, QC H4N 2M3  
Tel: 1.888.539.7226

**dormakaba USA, Inc.**  
6161 E. 75th St.  
Indianapolis, IN 46250  
Tel: 1 888 539 7226  
**[www.dormakaba.us](http://www.dormakaba.us)**

