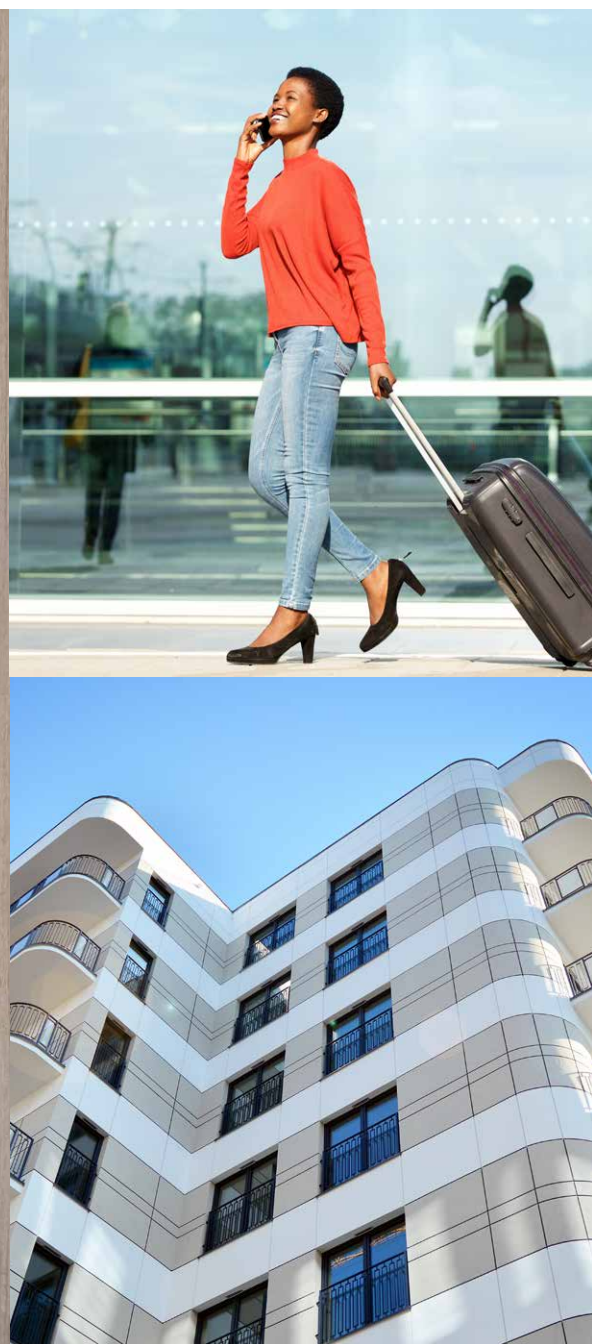


Saffire LX™

Electronic hotel lock by dormakaba



The Saffire LX electronic hotel lock: Modern technology meets elegant, timeless design.

All-in-One door locking solution

The „All-in-one“ Saffire LX door lock offers a secure, flexible, and user-friendly solution for the hospitality industry. It is pre-configured at the factory to support the latest RFID media, as well as mobile access and digital wallets. Optional online features complete the functionality. The Saffire LX meets all technological requirements of hotels while enhancing the guest experience.



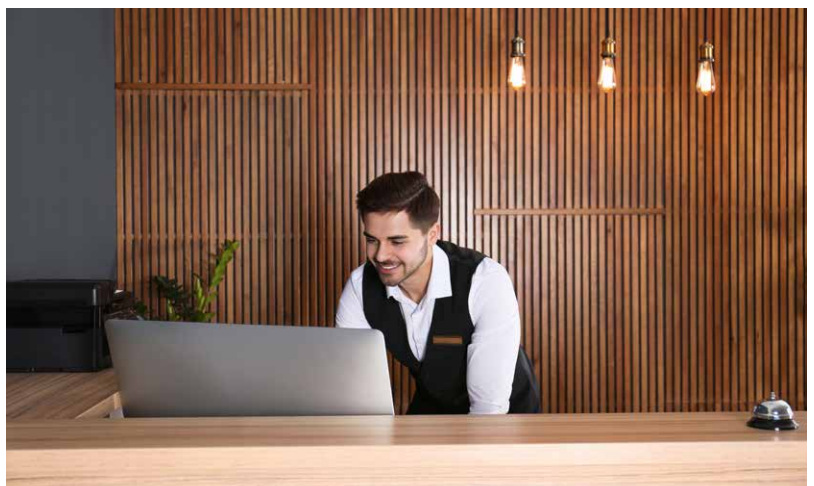
Mobile Access and digital wallet support

The Saffire LX is offered with the Ambiance access management software, supporting Mobile Access via Bluetooth® Low Energy or digital wallets through NFC (Near Field Communication) technology. This provides both hotel operators and guests with enhanced convenience, security, and reliability. Guests can effortlessly unlock their rooms and hotel common areas using their mobile devices, offering a seamless and secure access experience.



Ambiance Access Control Management Software

The Saffire LX lock is supported by Ambiance, dormakaba's modern access control software. Ambiance is our most flexible and scalable solution for managing hotel access control, designed to operate dormakaba's electronic door locks and administer access across the entire hotel property. Ambiance meets the expectations for an optimal guest experience by focusing on key features that optimize hotel operations: added value, connectivity, mobility, security, scalability, and an exceptional user experience.



Saffire LX is the innovative solution that combines smart security with aesthetics to harmonize with progressive hotel technology and amenities.

Applications

Saffire LX is designed to secure guestrooms, common areas, and back-of-house access points. It is ideal for properties of all sizes — whether for new construction, renovations, or door replacements. Installation is streamlined by a simplified door preparation process, making deployment faster and more efficient.

Low Maintenance

Easy to use and requiring minimal maintenance, Saffire LX operates with a completely sealed contactless reader.

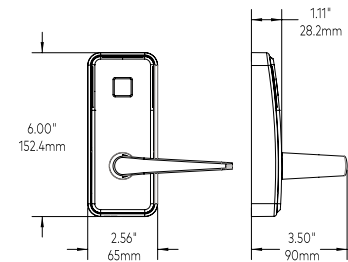
In addition, the three AA batteries last up to two years or up to 80,000 openings. When the batteries are running low, the lock indicator alerts staff that they need to be changed soon.

The Saffire LX programming and audit records are not erased during battery replacement.

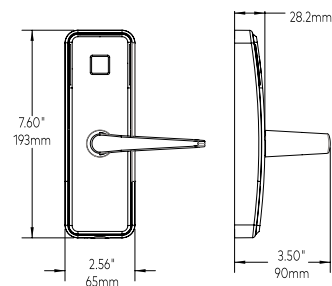
Security Features

Saffire LX provides security, efficiency and convenience to create a positive guest experience:

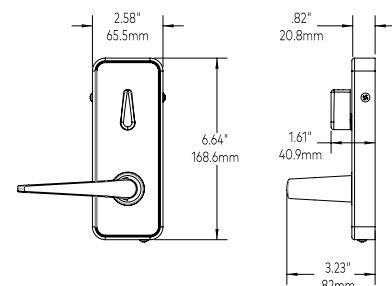
- Event Log: Access data for guests and staff can be read if needed.
- The Saffire LX is available with a mechanical long plate featuring an integrated mini-cylinder, a short plate with a separate Euro cylinder, or a purely electronic emergency opening option.
- When paired with an ANSI lock, the Saffire LX can optionally be equipped with door monitoring to display, for example, doors that have been left open.



Electronic Key Override



Mechanical Key Override, option long plate



Inside

Long plate

With integrated mini-cylinder
(Mechanical Emergency Opening/
MKO)



Short plate

In the EU version, optionally available
with a separate EU cylinder
(Mechanical Emergency Opening/
MKO)



Technical specifications	
Description	Heavy duty electronic lockset (mortise or cylindrical) with clutch mechanism and built-in contactless RFID/NFC and Bluetooth® reader
Handing	Left or right factory handed mortise, field reversible handing (lever and mortise)
Lever	Von, Troy, DIN* and Essen levers (field reversible) *DIN only available in Europe
Finishes	Black polycarbonate finish, metal parts in matt chrome or matt brass
Outside door lock	<ul style="list-style-type: none"> Polycarbonate cover, glossy black Zinc alloy with steel mounting plate / Field reversible lever operation Ergonomic reader with visual display of the reading field / LEDs for visual feedback Spindle socket
Door thickness	From 35 - 66 mm (1 ¾" bis 2 ½")
Standard backset	<ul style="list-style-type: none"> ANSI standard mortise lock: 70 mm (2 ¾") Cylindrical latch bolt lock: 60 – 70 mm (2 ¾" - 2 ¾") DIN standard mortise lock: 55 – 80 mm
Lock	<ul style="list-style-type: none"> ANSI-lock case with 1 ¼" (31,75 mm) or 1" (25,4 mm) lock front mortise and deadbolt Cylindrical latch bolt lock European DIN mortise lock case with panic-E-function (8 and 9 mm). Strike plate 20 mm standard
Batteries	3 AA for up to 80,000 openings or up to 2 years. Low battery indicator alerts staff that batteries need to be changed soon
Mechanical key override (MKO)	Optional, either with integrated mini cylinder in the long backplate or separate Euro cylinder in the short backplate (only in the Euro version)
Online options	<ul style="list-style-type: none"> Offline: standard Online Enabled: with online module
Mobile Access & digital wallets	The Saffire LX is equipped with Bluetooth® and NFC technology ex works and therefore can be used for mobile access or digital wallets
RFID credentials	Supports MIFARE Ultralight® C, MIFARE Ultralight® AES, MIFARE Plus® EV2, and MIFARE® DESFire® EV3 credentials. For optimal protection activate Enhanced Security in Ambiance on all compatible locks and firmware. Available in RFID keycards, fobs, and wristbands.

Features & environmental operation conditions

Date/time stamp	Real time: date and hours/minutes
Programming & audit trail downloading	Hand held programmer and lock utilize Near Field Communications (NFC)
Preregistered access cards	Access cards can be created up to 10 days in advance without overwriting cards that are already valid or cards that are to be created in the meantime.
Access card expiry	Configurable expiration dates; can be set automatically for the departure date or entered manually during the check-in process.
Passage mode	Set by authorized card
Lockout mode	Set by authorized card
Feedback	LED light indicators
Messages and diagnosis	Audible signalling and visual LED display on the lock; Diagnosis via LED display on the lock and programming device
Audit memory	Up to 4000 door events
Privacy override	With emergency card, Euro cylinder or integrated emergency cylinder (depending on version).
Environmental operating conditions	<ul style="list-style-type: none"> -35 to +70 °C (-31°F to +158°F) Humidity 0 % to 90 % non-condensing at +30 °C (86°F) IP54 certified

Certification, testing & warranty

Fire rating	<ul style="list-style-type: none"> With dormakaba ANSI mortise lock: UL 10C and ULC S-104 up to 3 hours used with approved fire protection doors With dormakaba cylindrical lock: UL 10C and ULC S-104 up to 3 Stunden DIN mortise lock (9 mm): Compliant with DIN EN 18273 and DIN EN 1634-1 as well as DIN EN 1634-3 for up to 30 minutes
Accessibility standard (ANSI version)	Complies with 2010 ADA Standards for Accessible Design – Art. 309.4 (Operable Parts). For models with long lever only. Lock shall be properly aligned with the mortise or latch and must be installed strictly according to the dormakaba installation instructions and the ADA Standards and Regulations applicable for each facility, to be able to fulfill compliance with ADA requirements.
North America standards	<ul style="list-style-type: none"> Florida Building Code: Certification for windstorm and HVHZ & non HVHZ (High Velocity Hurricane Zones) for locks equipped with ASM mortise only. Pending tests for: BHMA/ANSI: Grade One performance tests for "ANSI/BHMA A156.13 "American National Standard for Mortise Locks and Latches," and "ANSI/BHMA A156.25 "American National Standard for Electrified Locking Devices." (Only locks tested and approved by non-biased third-party test lab are allowed in the "BHMA Certified Products Directory" found at www.buildershardware.com) ANSI mortise lock: Complies with IEC 61000-4, FCC Part 15 and Industry Canada RSS-210. CE R&TTE Directive 1999/EC
European standards	<ul style="list-style-type: none"> EN1634-1 Fire resistance test for door and shutter assemblies and openable windows: Listed for 60 minutes with ANSI mortise lock case and European mortise lock case EN12209 Mechanically operated locks, latches and locking plates: ANSI mortise lock case and DIN mortise lock case EN 179 with European mortise lock case and approved levers. German Abz certification # Z-6.100-2592 with 9 mm spindle
Standard warranty	Two years

Note:

MIFARE and DESFire are registered trademarks of NXP B.V. | The Bluetooth® word mark and logos are registered trademarks owned by Bluetooth SIG, Inc. This information is intended for general purposes only. Availability, features, and specifications may vary by country; please consult your local representative for further details. Subject to technical changes without prior notice. Version 10/2025. ©2025 dormakaba.

Any questions? We will be happy to assist you.