

Quantum Pixel⁺

The art of seamless access



Features

- Minimalist design
- 1" solid deadbolt (optional auto deadbolt)
- Extensive event memory in the lock
- Monitoring of the mortise lock in the event memory (door not locked indicator)
- Wear resistant construction and finish
- NFC programming and auditing
- Batteries last up to 2 years
- Low battery indicator alerts staff
- Lock programming and audit records are not erased during battery replacement
- Supports Bluetooth® Low Energy, enabling mobile access
- Supports RFID credentials
- Supports digital wallets

Welcome to seamless access

Minimalist design. Maximum performance. The electronic hotel lock Quantum Pixel⁺ provides an easy-to-use, secure, and flexible solution that is both visually sleek and high-performing. The lock electronics are hidden within the door, while the hardware design blends in with our range of rose and lever options. The result is a lock design that integrates seamlessly within any hotel décor.

Next generation technology & mobile access

The Quantum Pixel⁺ supports NFC, RFID, and Bluetooth® Low Energy (BLE) technology and can operate with dormakaba Mobile Access Solutions, allowing guests to use a card key or mobile access for their digital wallet, instantly turning their phone into a key.

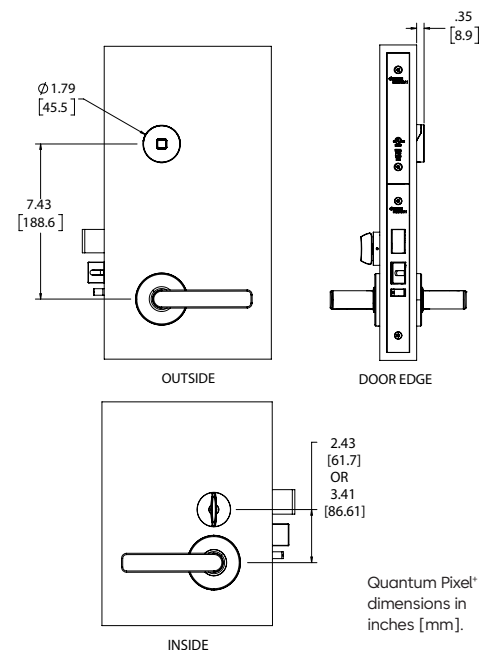
Access control management software

The Quantum Pixel⁺ lock is supported by dormakaba's robust Ambiance access management software that features an array of access control workflows for both guest and staff access. Optionally, choose dormakaba's Ambiance RX online access management solution for remote access giving you anytime control, from anywhere.




Applications

- Built for interior, exterior, and oceanfront applications
- Suitable for small to large-scale hotels
- Ideal for new projects or when doors are being replaced
- Retrofitting from previous generation Quantum Pixel

Factsheet



Mechanical features

Description	Electronic mortise lockset with 1" (25.4 mm) throw deadbolt and 5/8" (15.9 mm) dead-locking latch bolt.
Handing	Factory-handed mortise (left, right, left reverse, right reverse).
Lever & rose selection:	Introducing our modern rose: a sleeker twist to a timeless classic. Ø 2.5" x d 0.24" (Ø 63,5 x d 6.1 mm). Available with the following levers:  Our traditional rose: A long-standing favorite. Ø 2.83" x d 0.61" (Ø 71,88 x d 15,49 mm). Available with the following levers: 
Standard finishes	Bright Chrome, Dark Mahogany, Satin Brass, Satin Chrome, Satin Nickel. Black (traditional rose levers only), Matte black (modern rose levers only).
Deadbolt	1" (25.4 mm) throw deadbolt and 5/8" (15.9 mm) dead-locking latch bolt.
Door thickness	1 3/8" (37 mm) to 3" (76 mm) thickness. No mortise offset, no rabbeted doors.
Weight	Approx. 8.0 lbs (4 kg) with hardware.
Construction	Reader: Polycarbonate (PC) and Polycarbonate/Acrylonitrile Styrene (PC/ASA). Levers: Brass, zinc, or stainless steel.
Standard backset	2 3/4" (69.9 mm) backset ANSI mortise.
Locking options	ANSI lock case with 1" lock front mortise. Options: automatic deadbolt, door ajar.
Online configurations	Online Ready: Door ajar mortise (ANSI lock case) required. Online Enabled: Door ajar mortise (ANSI lock case) required, additional controller board equipped with low-power wireless module.
Mobile Access options	
Bluetooth® enabled	Bluetooth® (BLE) included standard, enabling mobile credentials upgrade at any time.
Lock operation	
Date/time stamp	Real-time; date and hours/minutes.
Interrogation	Obtain key usage reports from the lock by using a handheld unit at the door, or increase efficiency by performing a remote interrogation using Ambiance RX online lock system (optional).
Pre-registered keycards	Configurable expiration dates; can be automatically set for check out date or manually applied when making key during check in.
Passage mode	Set by authorized keycard or online system. Can also be configured to perform an automated/pre-defined passage mode time.
Lockout mode	Set by authorized keycard or online system.
RFID credentials	Supports MIFARE Ultralight® C, MIFARE Ultralight® AES, MIFARE Plus® EV2, and MIFARE® DESFire® EV3 credentials For optimal protection activate Enhanced Security in Ambiance on all compatible locks and firmware Available in RFID keycards, fobs and wristbands.
Feedback & Diagnostics	Light indicator on the reader and handheld display.
Audit trail	Up to 4,000 events.
Privacy override	Emergency key and electronic override.
Batteries	Alkaline - dormakaba provided battery pack; battery life is up to 2 years. Low battery indicator: alerts staff that batteries need to be changed soon.
Certifications & testing	
Accessibility standard	Complies with 2010 ADA Standards for Accessible Design – Art. 309.4 (Operable Parts). Lock shall be properly aligned with the mortise or latch and must be installed strictly according to the dormakaba installation instructions and the ADA Standards and Regulations applicable for each facility, to be able to fulfill compliance with ADA requirements.
BHMA/ANSI	Certified to be compliant with Grade One performance tests for ANSI/BHMA A156.13 - 2022 "American National Standard for Mortise Locks and Latches," and A156.25 - 2023 "American National Standard for Electrified Locking Devices." (Only locks tested and approved by non-biased third-party test lab are allowed in the "BHMA Certified Products Directory" found at www.buildershardware.com)
Fire rating	<ul style="list-style-type: none"> U.L. Listed: GYQS.R18481 "Electrically Controlled Single-point Locks and Latches." Evaluated in accordance with UL 10B and UL 10C. Listed for up to 3 hours on metal doors, 1 hour on composite fire doors, and 1/3 hour on wood core doors. EN 1634-1 30 minutes.
Electronics	FCC Part 15 Class A and CE directive 2014/53/EU compliant, Environmental operating conditions, EMC Directive 2014/30/EU.
Environmental Product Declaration and Compliance	<ul style="list-style-type: none"> EPD as per ISO 14025 and EN 15804+A2. Publisher: Institut Bauen und Umwelt e.V. REACH, ROHS, Prop 65, and TSCA. 
Environmental operating conditions	<ul style="list-style-type: none"> Indoor side: 32 °F to 151 °F (0 °C to 66 °C) Outdoor side: -31 °F to 151 °F (-35 °C to 66 °C) 0 % to 85 % non-condensing humidity at 86 °F (30 °C) IP rating: IP54
Warranty	
Standard warranty	Two years
Support programs	dormakaba Service Plans (Platinum, Gold, Silver)

© dormakaba 2025 Information on this sheet is intended for general use only. dormakaba reserves the right to alter designs and specifications without notice or obligation. All trademarks are the property of their respective owners.

Any questions? We would be happy to advise you.

Contact us at: 1 800 999 6213