

SR Standalone Remote Control / Elevator Control Unit RCU/ECU



Applications

- Works for both perimeter (RCU) and elevator (ECU) applications
- Requires 12V-24V AC or DC input
- RCU controls electronic locking devices up to 24 volts AC/DC
- RCU/ECU controller fits into double-gang switch box
- SPDT 5A@30VDC relay with common, normally open and normally closed contact

Overview

The SR Standalone remote control/elevator control unit (RCU/ECU) is a versatile contactless card reader and controller. Through the application of contactless smart card technology, this remote control device is designed to work with all electrified access control devices for perimeter doors, concierge floors, common areas, and other secured areas with electrified hardware.

Mobile access solutions

The reader device is able to operate using the dormakaba Mobile Access Solutions.

Voltage

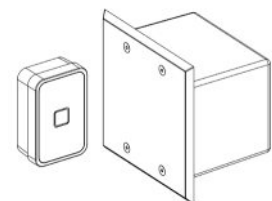
- 12-24 AC/DC

Outside dimensions

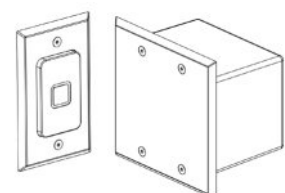
- 4.56" W x 4.50" H x 0.75" D (Controller)
- 1.875" W x 2.875" H x 1" D (SR Reader)

Access management software

The SR Standalone RCU/ECU is compatible with our Ambiance access management software solution that features an array of access control workflows for both guest and staff access.



SR Reader surface mount
SR Controller



SR Reader flush mount
SR Controller

Features

- Integrates with Ambiance Access Management Software
- Environmentally sealed contactless smart card reader protects against climate extremes, which is an especially vital feature for common access readers placed in external building and exit device applications
- Optionally equipped with the Ambiance RX or other wireless transceiver for online centralized access control
- Contactless smart card reader uses industry-standard MIFARE ISO 14443A communication platform and high-security protocol
- Keycards are programmed using a contactless encoder
- Contactless communication between the keycard and the reader via RF waves
- Configurable for normally closed circuits (magnet latches) and normally open circuits (electric strikes)
- Auditable entries/attempts
- Single dry contact relay for door or elevator control
- Requires minimal installation space

Specifications

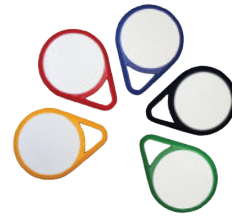
- Voltage: 12-24 VAC or VDC
- SPDT 5A@30VDC relay with common, normally open and normally closed contacts
- Environmental operating:
 - Controller 32°F to 151°F (0°C to 66°C)
 - Reader -31°F to 151°F (-35°C to 66°C)

Requirements

- Double-gang switch box

Mobile access options

- Available with BLE



© dormakaba 2025 Information on this sheet is intended for general use only. dormakaba reserves the right to alter designs and specifications without notice or obligation. All trademarks are the property of their respective owners.

Any questions? We would be happy to advise you.

Contact us at: 1.800.999.6213