

RCI 5460 Series

No Cut ANSI Electric Strikes



Special ramp design for quick and easy installation

Features and benefits:

- Special ramp design allows the latch bolt to enter or exit from an unmodified frame, allowing for quick and easy installation
- Clean finish with no cuts, burns or frame damage
- Faster and simpler installation
- No special tools or cutting equipment required
- Preserves fire rating or door/frame warranty
- Great for aftermarket upgrades to access control systems
- Non-handed and field selectable (fail safe/secure)
- Fire-rated and latch monitored models available

The RCI 5460 series ANSI "no-cut" electric strike is designed to be installed without needing to cut a door frame or perform any type of modification to the existing structure. The RCI 5460 is a retrofit solution best suited for cylindrical locksets and can be installed in hollow metal door frames.

The RCI 5460 features a special keeper ramp allowing the latchbolt to enter or exit from the strike cavity without frame cutting. The strikes can be configured to fail-safe or fail-secure on site and are particularly effective for fire rated doors.

The RCI 5460 offers key advantages:

- Saves time and effort with no frame modifications required
- Ideal for fire-rated doors or historical buildings where cutting is not permitted
- Ideal when structural integrity or aesthetic of the frame must be preserved
- Time or cost constraints

Specifications

Non-destructive installation	No frame cutting is required. A special ramp design allows the latchbolt to exit from an unmodified frame
Handing	Non-handed
Mode	Field selectable fail-safe or fail-secure (reversing the function indicator)
Strength	Static: 1,500 lbs (680Kg) Dynamic: strength 70 ft-lbs
Endurance	250,000 cycles UL tested, 1,000,000 cycles factory tested
Finish	US32D Brushed stainless steel
Application	Indoor use only

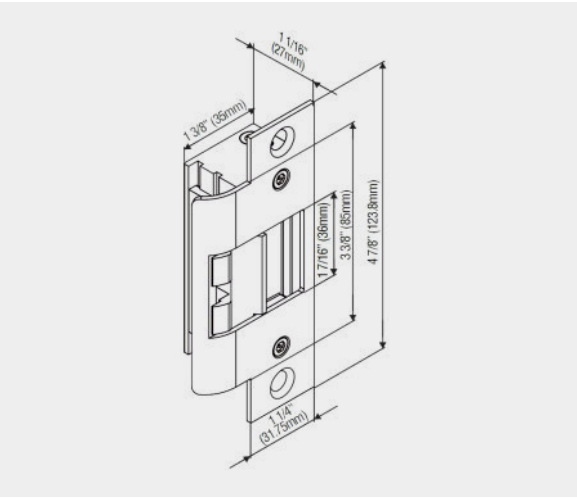
Optional Features

Monitoring	Latch monitor model available - 5460M / F5460M (fire rated)
Faceplate	Comes with 1 square and 1 radius cornered 4-7/8" faceplate (6-7/8" and 7-15/16" faceplates available)
Warranty	3 years
Patent	US8833814B2 (US)
Certifications	UL 1034 burglary resistant listed: BP10269, UL 294 Access Control System listed: BP10269, UL 10C 3-hour (5460/ F5460), UL 10C 3-hour (fire-rated models only, 5460M/F5460M), RoHS compliant

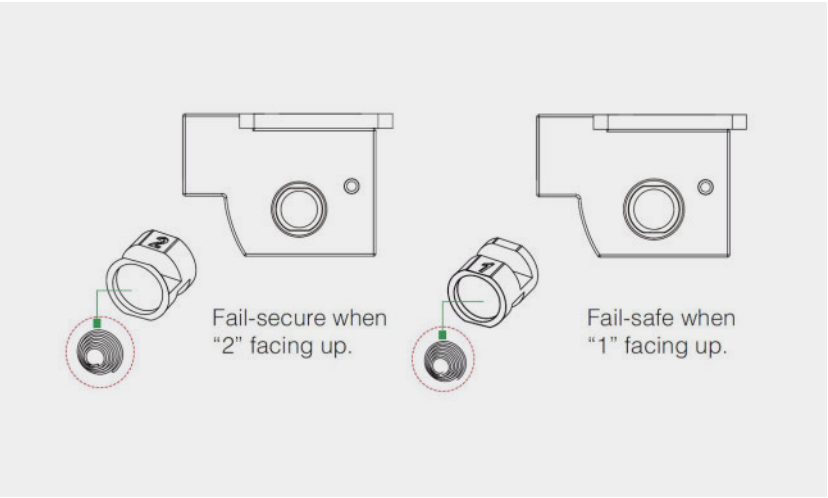
RCI 5460 series ANSI electric strikes

Models	Voltage (VDC)	Latch Throw	Current Draw	Latch Monitor	Special Ramp Design	Reversible Fail Safe or Fail Secure	Frame	Body Construction
5460	Dual 12/24	9/16"	300mA/12VDC 150mA/24VDC	No	Yes	Yes	Hollow Metal	Zinc Allow
5460M				Yes				Stainless Steel
F5460				No				
F5460M				Yes				

Changing Fail-Safe / Fail-Secure
Fail-safe or fail-secure is field reversible by reversing the function indicator



Dimensions



Fail safe/secure application:

Any questions? We would be happy to advise you.
Contact us at: 1-888-537-7226