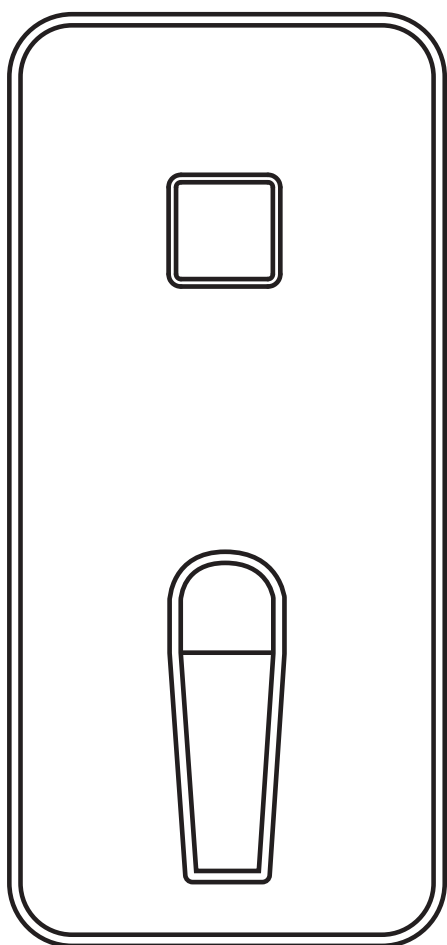


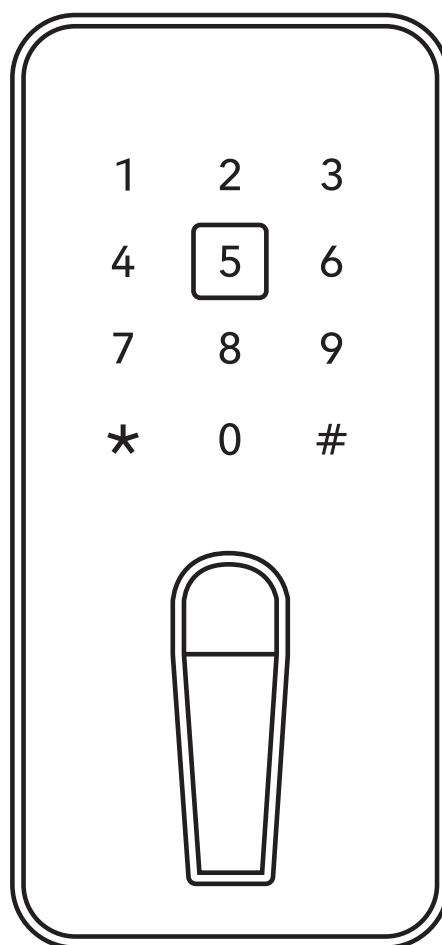
Saffire LX-D + EVO LZ-D

Deadbolt Series

Installation Instructions



Saffire LX-D



Saffire EVO LZ-D

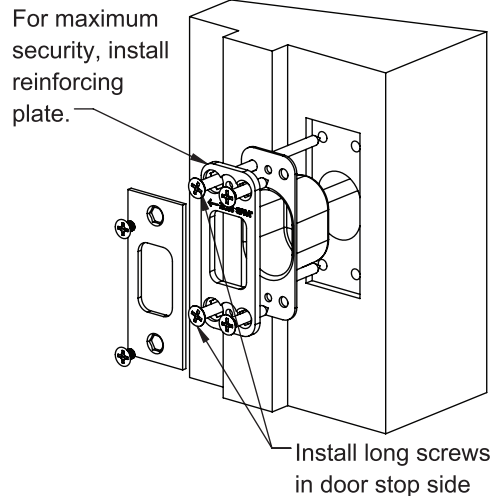
⚠ WARNING

1. Please read and follow all directions carefully.
2. **This lock is not designed to be used on emergency exit doors.**
3. Carefully inspect glass, door frame, door, etc. to ensure the recommended procedure will not cause damage. dormakaba standard warranty does not cover damages cause by installation.
4. Wear safety glasses when making the holes.
5. All the following operations and testing of the lock to be done with door open.

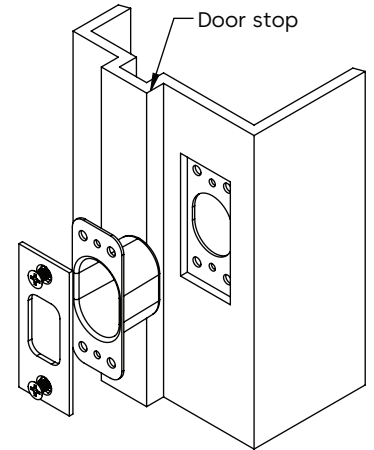
Tools Required

- Safety glasses
- 1/2" (13mm) Chisel
- 1/8" (3mm) Drill Bit
- 5/32" (4mm) Drill Bit
- 1" (25mm) Drill Bit or Hole Saw
- 2 1/8" (54mm) Drill Bit or Hole Saw
- Drill
- Awl or Center Punch
- Screwdriver, 1/8" Slotted
- Philips Screwdriver #2
- Adjustable Square
- Tape Measure
- Screw driver Torx T10

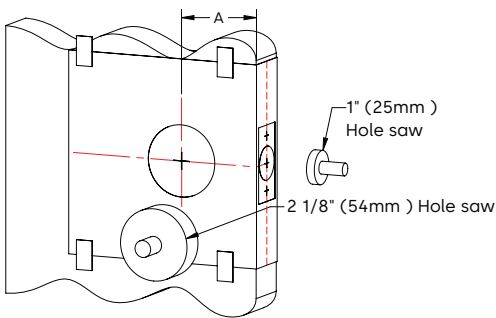
1A Install strike on wood frame



1B Install strike on steel frame



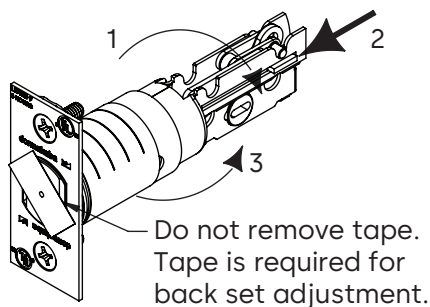
1C Door Preparation



A = Backset = 2 3/4" (70mm) or 2 3/8" (60mm)

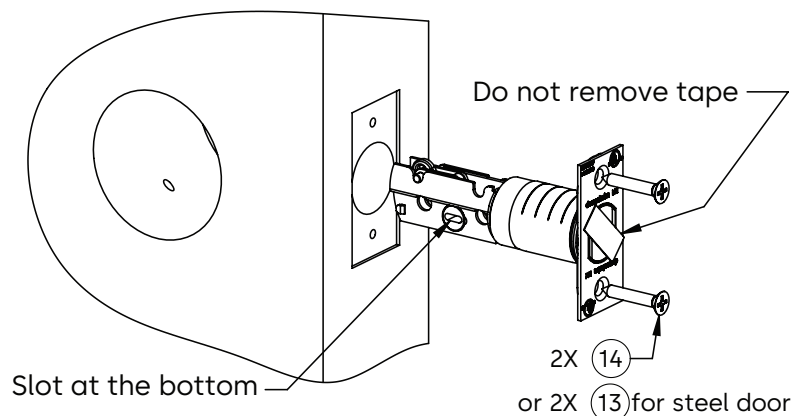
1. Determine which template fits your Saffire LX-D lock installation, either 2 3/8" (60mm) or 2 3/4" (70mm) backset.
2. Place appropriate template onto door and mark holes.
3. Drill holes as per dimensions on the template. The 1" (25 mm) hole shall be on the center line of door thickness.
4. Mortise door edge for deadbolt face plate.
5. Drill 2 1/8" from both sides of the door to prevent unsightly damage.

2 Adjust backset of deadbolt



The deadbolt is pre-set at 2 3/4" (70mm) backset. Proceed as illustrated to change to 2 3/8" (60mm) backset, if required.

3 Install deadbolt in door

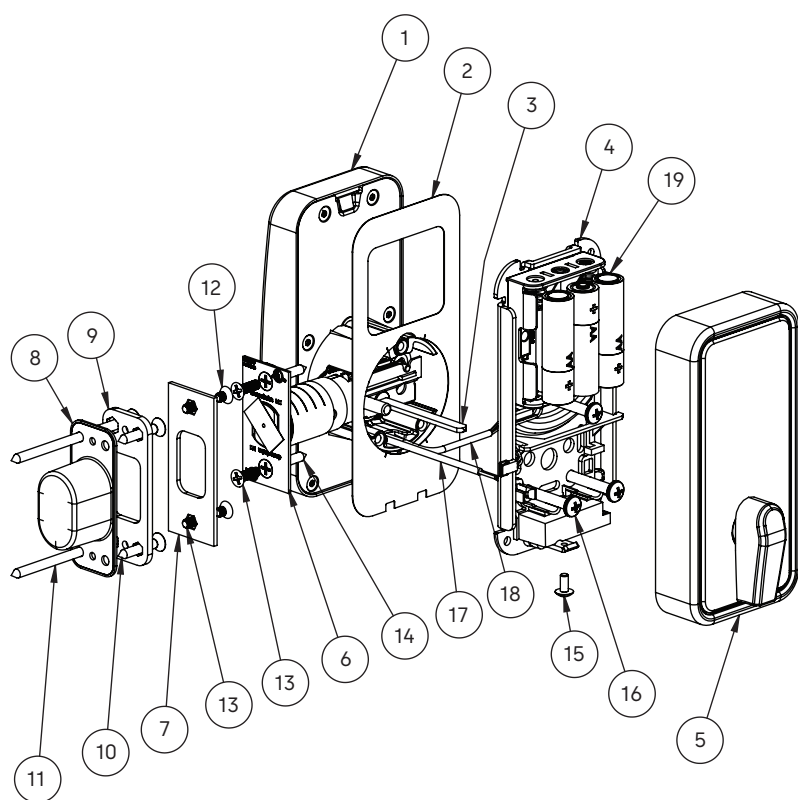


ITEM NO	QTY	DESCRIPTION
1	1	Front lock housing assembly
2	1	Gasket front lock housing
3	1	Tail piece
4	1	Inside trim assembly
5	1	Inside trim cover assembly
6	1	Deadbolt
7	1	Striker plate
8	1	Dust box
9	1	Reinforcing plate
10	2	Phillips #2, flat head wood screw 8 x 1" Lg
11	2	Phillips #2, flat head wood screw 8 x 3" Lg
12	2	Phillips #2, flat head screw 8-32 x 7/32" Lg

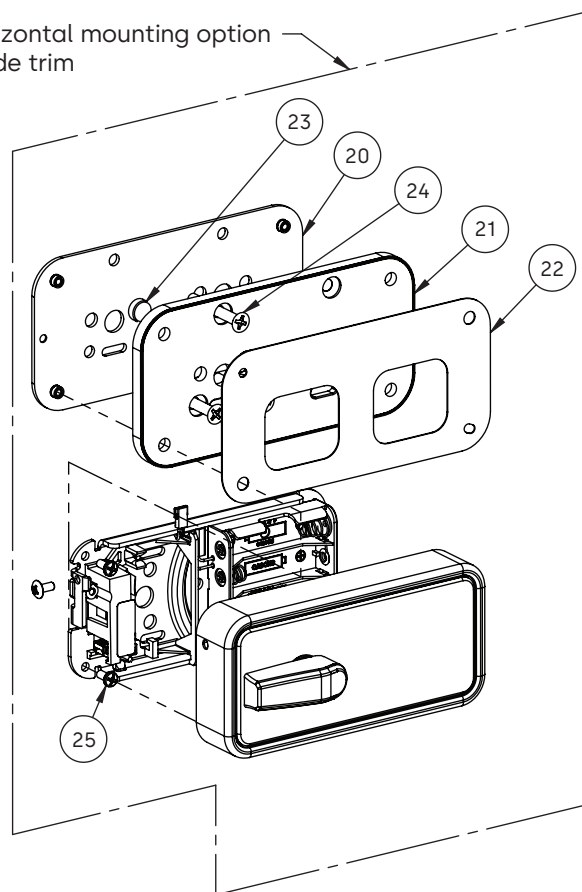
For door thickness between 2-1/4" and 2-1/2" please order hardware kit 062-515846.

ITEM NO	QTY	DESCRIPTION
13	4	Phillips #2, flat head screw 8-32 x 1/2" Lg
14	2	Phillips #2, flat head wood screw 8 x 1" Lg
15	1	Phillips #2, truss head 6-32 x 5/16" Lg
16	3	Phillips #2, pan head screw 10-24 x 1-1/4" Lg
17	1	Communication harness (optional)
18	1	Power cable
19	3	Aa battery
20	1	Fire plate
21	1	Base plate
22	1	Cover plate
23	1	Locating post
24	3	Phillips #2 flat head screw 10-24 x 1.500" Lg
25	3	Phillips #2 pan head screw 6-32 x 5/16" Lg

Lock diagram

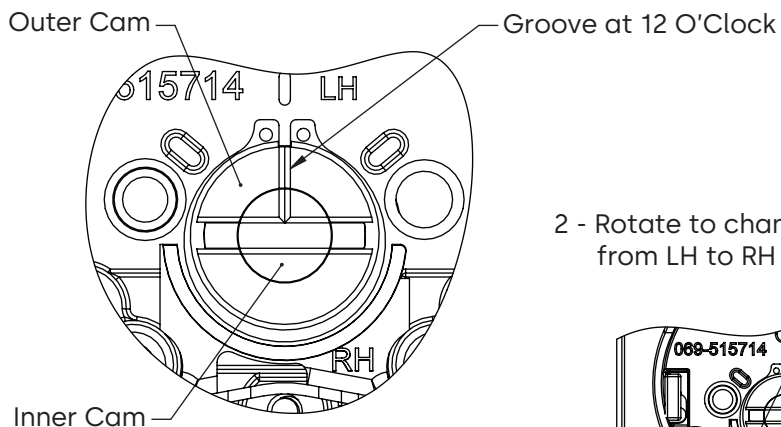


Horizontal mounting option
Inside trim

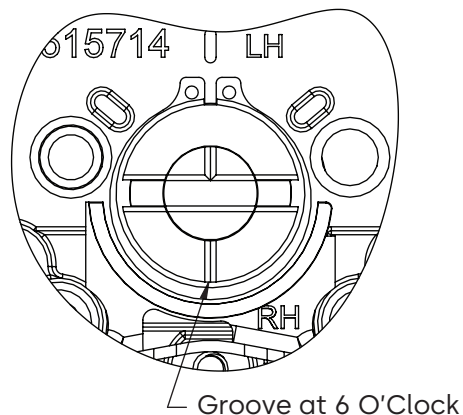


4 Adjust lock handing on outside housing assembly

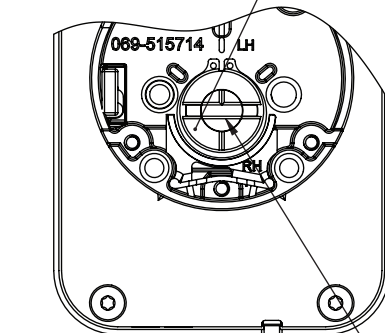
Left Hand (LH)



Right Hand (RH)



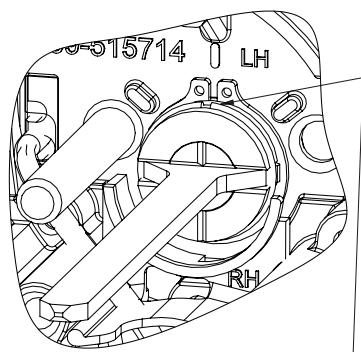
2 - Rotate to change from LH to RH



1 - Hold to prevent rotation

WARNING! Wiring harness protector must be installed to prevent cable damage. Failure to install harness properly may result in damaged cable leading to lock malfunction or voided warranty.

5 Assemble tail piece

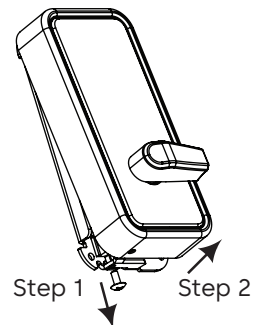


Tail piece shall be "snap" in place with wire ring opening rotated at 12 o'clock

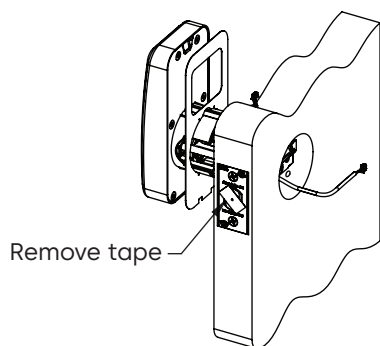
WARNING! No tools are needed to install tail piece correctly. Do not use excessive force when inserting into housing assembly. Misalignment or forcing tail piece can lead to injury or damage to lock components.

1. Install tail piece by engaging one shoulder of tail piece under spring clip.
2. Pull tail piece to other side to engage second shoulder under spring clip. When both sides of tail piece are seated correctly, a solid "click" will be felt and heard.

6 Remove inside cover

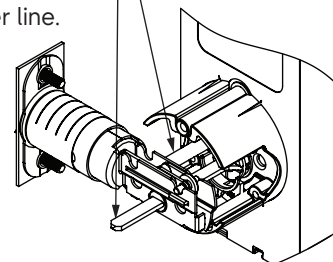
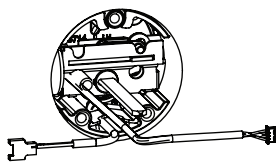


7 Assemble outside housing



WARNING

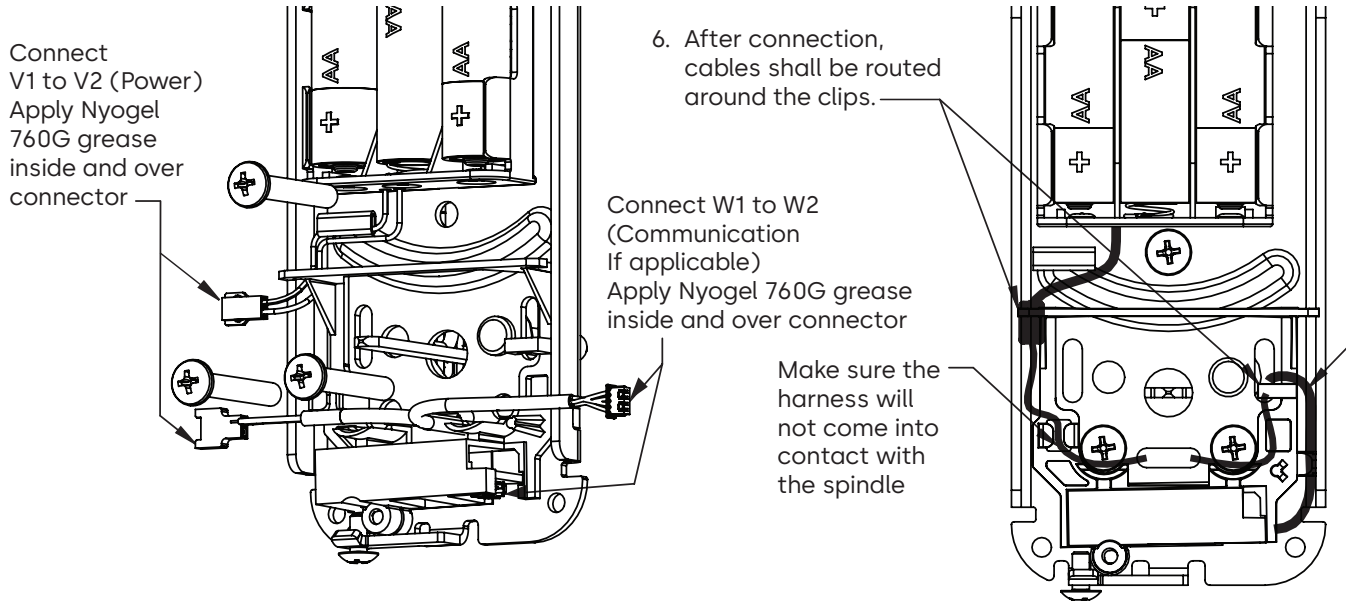
Align stud and tail piece gently into deadbolt. Tail piece must be below deadbolt center line.



8A Install inside trim assembly (Vertical mounting only)

For horizontal mounting see 8B - Sheet 3 then proceed with section 9.

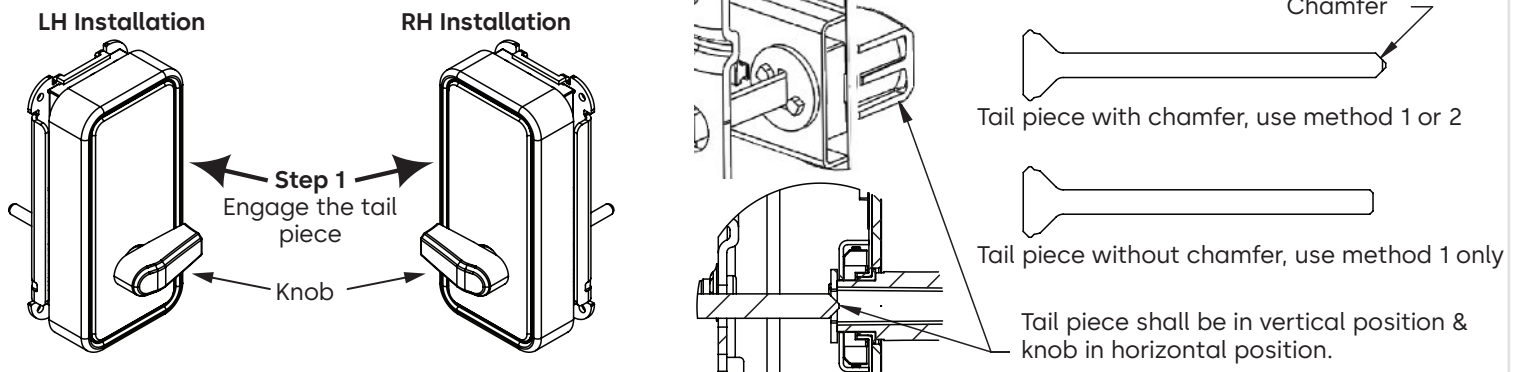
1. Install inside trim on door as shown below, running cables through inside trim backplate lower slot. Cable shall be pulled gently to accumulate all excess within inside trim.
2. Install mounting screw, 3x.
3. Before tightening the screws, deadbolt functionality shall be validated by rotating tail piece from Inside. Deadbolt shall move smoothly.
4. All screws shall be tightened properly.
5. Install batteries after tightening all screws and connecting wiring V1 & V2 and W1 & W2 if applicable.



9 Inside cover installation

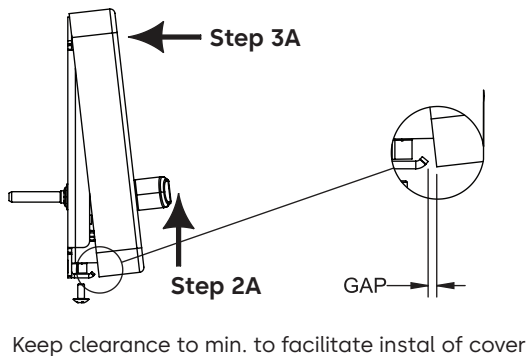
Method 1: for thin door, 1.375" To 1.50 Please follow step 1, 2A, 3A, 4 & 5.

Method 2 (for tail piece with chamfer only): for normal door 1.75" and thicker please follow step 2B, 3B, 4 & 5. For door from 1.5" to 1.75" please use the most convenient method, 1 or 2.



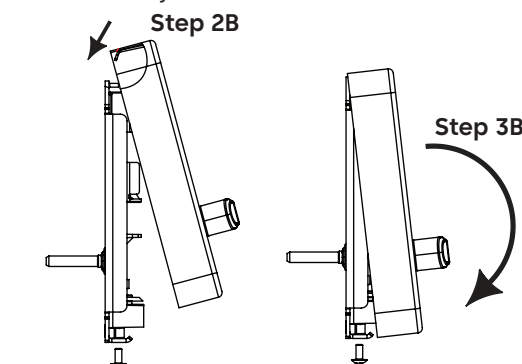
Step 2A: Move the cover upward. Tail piece must remain engaged in turn knob.

Step 3A: Engage cover's tab with back plate hook.



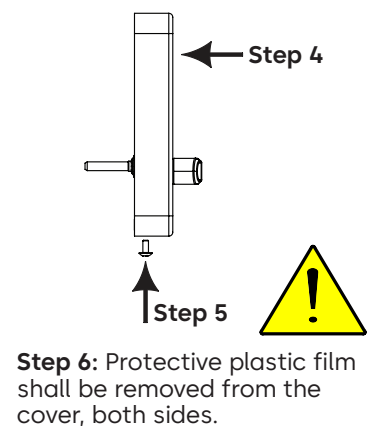
Step 2B: Engage cover's tab in back plate's hook. Lift cover as required.

Step 3B: Lower cover and rotate as shown. Tail piece with chamfer shall engage in related slot automatically.



Step 4: Close cover's bottom.

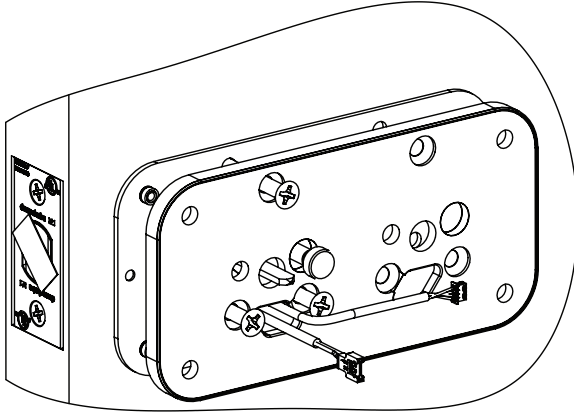
Step 5: Install screws.



8B Install inside trim assembly horizontal mounting option (If applicable)

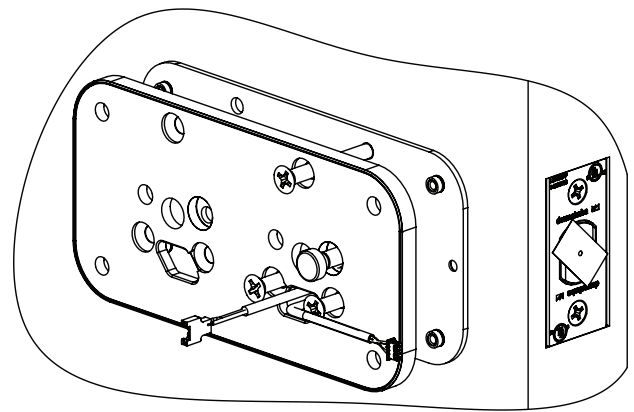
1. Before tightening the screws verify functionality by extracting and retracting the deadbolt. Deadbolt shall move smoothly.
2. All screws shall be tightened properly.
3. Connect batteries after tightening all screws and wiring W1 & W2.

LH Mounting

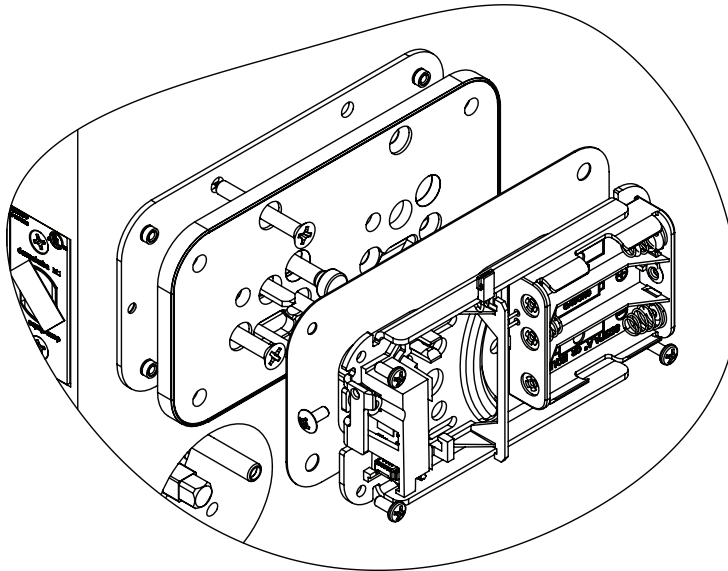


1. Harness shall be pulled gently through inside trim's backplate to accumulate all excess cables within the inside trim.

RH Mounting



1. Harness shall be pulled gently through inside trim's backplate to accumulate all excess cables within the inside trim.



Locating post and mounting screws shall be installed as shown. Left mounting shown. Cover removed for clarity.

ISED non-interference disclaimer

This device complies with Industry Canada license-exempt RSS standard(s). Operation is subject to the following two conditions: (1) this device may not cause interference, and (2) this device must accept any interference, including interference that may cause undesired operation of the device.

This equipment complies with ISED RSS-102 radiation exposure limits set forth for an uncontrolled environment. This transmitter must be installed to provide a separation distance of at least 20 cm from all persons and must not be co-located or operating in conjunction with any other antenna or transmitter.

Le présent appareil est conforme aux CNR d'Industrie Canada applicables aux appareils radio exempts de licence. L'exploitation est autorisée aux deux conditions suivantes : (1) l'appareil ne doit pas produire de brouillage, et (2) l'utilisateur de l'appareil doit accepter tout brouillage radioélectrique subi, même si le brouillage est susceptible d'en compromettre le fonctionnement."

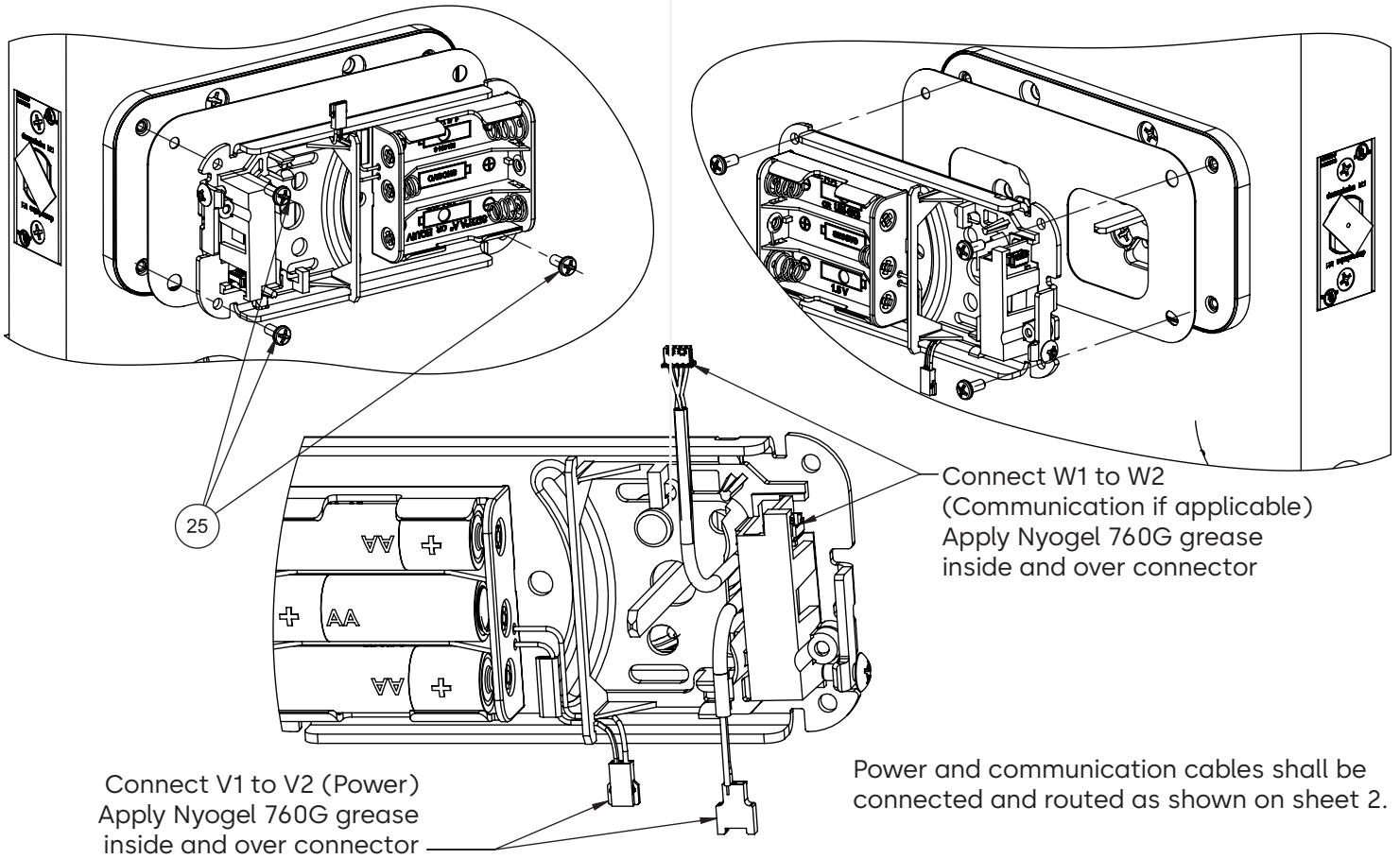
Cet équipement est conforme avec ISED RSS-102 des limites d'exposition aux rayonnements définies pour un environnement non contrôlé. Cet émetteur doit être installé à au moins 20 cm de toute personne et ne doit pas être colocalisé ou fonctionner en association avec une autre antenne ou émetteur.

8B Install inside trim assembly horizontal mounting option (If applicable)

1. Cover plate and inside trim assembly shall be installed as shown with 3x screws, item 25.

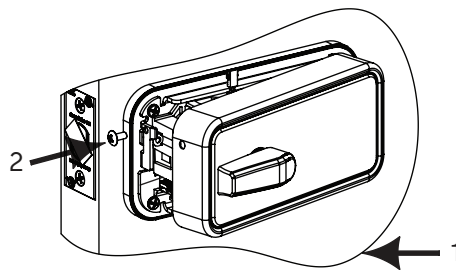
LH Mounting

RH Mounting



9B Install inside trim cover

See installation detail on sheet 2.



FCC Compliance Statement

This equipment has been tested and found to comply with the limits for a Class B digital device, pursuant to part 15 of the FCC Rules. These limits are designed to provide reasonable protection against harmful interference in a residential installation. This equipment generates, uses, and can radiate radio frequency energy and, if not installed and used in accordance with the instructions, may cause harmful interference to radio communications. However, there is no guarantee that interference will not occur in a particular installation. If this equipment does cause harmful interference to radio or television reception, which can be determined by turning the equipment off and on, the user is encouraged to try to correct the interference by one or more of the following measures:

- Reorient or relocate the receiving antenna.
 - Increase the separation between the equipment and receiver.
 - Connect the equipment into an outlet on a circuit different from that to which the receiver is connected.
 - Consult the dealer or an experienced radio/TV technician for help.
- Changes or modifications not expressly approved by the party responsible for compliance could void the user's authority to operate the equipment.

This device complies with part 15 of the FCC Rules. Operation is subject to the following two conditions: (1) This device may not cause harmful interference, and (2) this device must accept any interference received, including interference that may cause undesired operation.

RF Exposure Statement

This equipment complies with FCC radiation exposure limits set forth for an uncontrolled environment. This transmitter must not be co-located or operating in conjunction with any other antenna or transmitter. To avoid the possibility of exceeding the FCC radio frequency exposure limits, this equipment should be installed and operated with minimum distance 20 cm between the antenna and your body during normal operation. Users must follow the specific operating instructions for satisfying RF exposure compliance.



Door
Hardware



Electronic
Access & Data



Mechanical
Key Systems



Lodging
Systems



Entrance
Systems



Safe
Locks



Service



dormakaba.com

dormakaba USA Inc.

6161 E. 75th Street

Indianapolis, IN 46250

T: 1 888 217 5654

T: +1 514 340 9025 (international)

dormakaba.us

Full service from 8:30 am to 7:00 pm

Eastern Time, Emergencies 24/7

Email: techsupport.lgs.ca@dormakaba.com

Lodging Support: dormakabalodgingsupport.com