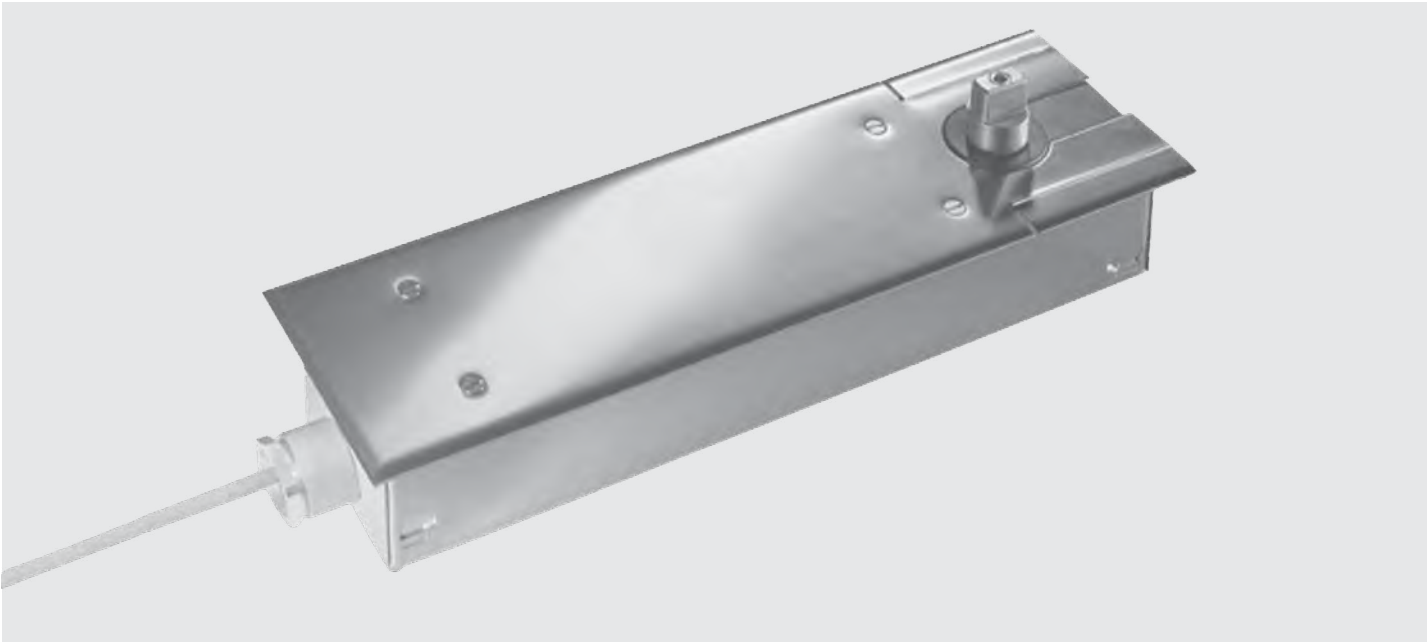


BTS80 EMB Series

Floor concealed door closers

with electromagnetic hydraulic hold open





Dependable and versatile floor-concealed closer

Contents

BTS80 EMB Series
Floor-concealed closer

- 02 Overview
- 03 Certification & specifications
- 04 How to order
- 05 Technical details
- 06 Applications
- 07 Spindles

Aesthetically Pleasing Floor Closer with Electromagnetic Hydraulic Hold Open for Fire/Life Safety, Remote Release & Control, or Tempered Glass Door Applications.

The BTS80 EMB Series of floor-concealed door closers provides an electromagnetic hydraulic hold open feature, allowing doors to self-close upon the interruption of electrical current, yet remain functional in noncritical situations.

The BTS80 EMB includes a selective type hold open with a range of approximately 65° to 175°. This closer is an ideal solution in applications where surface applied life safety products cannot be installed or are objectionable due to aesthetics.

The BTS80 EMB is specifically designed to be used in fire/life safety applications

where the hold open is electrically controlled by a fire alarm contact. The closer is typically placed into the hold open position until a fire alarm condition.

When installed in conjunction with a maintained control switch, the BTS80 EMB can be used as a hold open/privacy function. The switch controls the power on (hold open) or off (privacy) to the closer, giving two functional characteristics to an application—in a classroom, for example. Use the hold open feature during setup of the room or as occupants enter and exit between sessions. Use the privacy feature during class. Power is out when using the privacy feature, preventing doors from being accidentally caught in the hold open position as occupants exit and re-enter.

Features

Spring Size	ANSI Size 5
Controlled closing with two hydraulic valves	180°-0° / 7°-0°
Mechanical backcheck	Approx. 70°
Multipoint hold open	65°-175°



dormakaba USA quality and environmental management systems in Reamstown, PA and Steeleville, IL are certified to ISO 9001:2008 and ISO 14001:2004.

In an office setting, the BTS80 EMB can be used to maintain the hold open position of a door until interrupted by a momentary switch located near or on the occupant's desk when privacy is desired. This office function can be set up as a hard-wired or wireless connection.

The BTS80 EMB can also be used with tempered glass door applications, using the same guidelines as for the other functions described previously.

Note: Since they are not typically fire-rated, tempered glass door applications are not used for life safety installations.

Certification

- The BTS80 EMB Series is listed by U.L. and C.U.L. under their continuing reinspection programs.
- CSFM approved.



Specifications

All floor-concealed door closers shall be dormakaba BTS80 EMB Series employing a cam and roller mechanism. The closers shall have electromagnetic hydraulic multipoint hold open between 65° and 175°. The closers shall be capable of controlling interior or exterior doors weighing up to 660 lb and measuring up to 3'-6" wide exterior and 4'-0" interior. The closers have mechanical backcheck at approximately 70°. Dual valve adjustment will provide controlled closing speed from approximately 180° opening range, even in cold temperature conditions. The closer will provide adjustment within the cement case to allow lateral and longitudinal adjustment of 1/4" and vertical height adjustment of 5/32". Field interchangeable spindles will be available to provide bottom door clearances ranging from 5/16" to 2-5/16". Operating voltage shall be 24 VDC.

Optional specifications

- A sealing compound should be used with the closers to prevent water or cleaning solvent from entering the cement case.
- Specify SC2.

Operation

- 24 VDC at 125 mA +10% -15%

Finishes

Optional plated finishes

- Brass: 605 (Bright) or 606 (Satin)
- Bronze: 611 (Bright), 612 (Satin), or 613 (Oxidized Satin Oil Rubbed)
- Nickel: 618 (Bright) or 619 (Satin)
- Chrome: 625 (Bright) or 626 (Satin)

Standard sprayed finishes

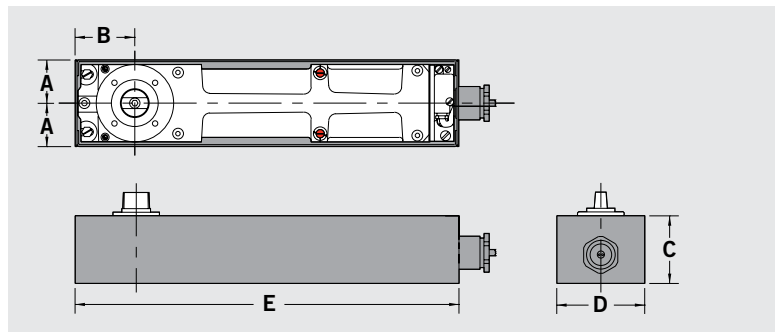
- Aluminum: 689
- Bronze: 691 (Dull) 690 (Statuary), or 695 (Dark Duranodic).
- Gold: 696
- Black: 693

Optional dormakaba custom color or designer color finishes

Contact Customer Service.

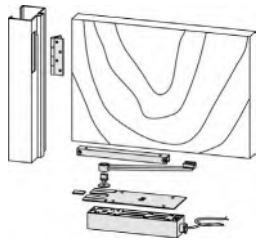
Door ranges

Size	Door width	
	Exterior	Interior
ANSI Size 5	2'6"–3'6"	2'6"–4'0"



	A	B	C	D	E
Inches	1-13/32–1-21/32	2–2-1/4	2/3/08	3/1/08	13-7/16
Millimeters	36–42	51–57	60	78	341

How to order BTS80 EMB Series



Spindle

1-1/2" Pre-Loaded Spindle —	80030
1-5/16" Pre-Loaded Spindle —	80025
1-1/8" Pre-Loaded Spindle —	80020
7/8" Pre-Loaded Spindle —	80015
3/4" Pre-Loaded Spindle —	80010
1/2" Pre-Loaded Spindle —	80005
5/16" Pre-Loaded Spindle —	80003
2-5/16" Spindle —	74050
2-1/16" Spindle —	74045
1-7/8" Spindle —	74040
1-11/16" Spindle —	74035
1-1/2" Spindle —	74030
1-5/16" Spindle —	74025
1-1/8" Spindle —	74020
7/8" Spindle —	74015
13/16" Spindle —	74012
3/4" Spindle —	74010
5/8" Spindle —	74007
1/2" Spindle —	74005
5/16" Spindle —	74003

Optional accessories

E80624	Through Wire CH Top Pivot (4 wire)
E80622	Through Wire CH Top Pivot (2 wire)
8062	CH Top Pivot
75200	Through Wire Intermediate Pivot for 3/4" Offset
15233	3 h Intermediate Pivot for 1-1/2" Offset
15222	20 min Intermediate Pivot for 1-1/2" Offset
15220	Intermediate Pivot for 1-1/2" Offset
75243	3 h Intermediate Pivot for Lead Lined 3/4" Offset (see note*)
75242	Intermediate Pivot for Lead Lined 3/4" Offset (see note*)
75240	Intermediate Pivot for Lead Lined 3/4" Offset (see note*)
75233	3 h Intermediate Pivot for 3/4" Offset
75222	20 min Intermediate Pivot for 3/4" Offset
75220	Intermediate Pivot for 3/4" Offset
SC2	Sealing Compound
TP80 CH	Terrazo Pan CH and 1-1/2" Offset
TP80	Terrazo Pan for 3/4" Offset

Hand

Specify for Left Handed Units

LH Specify for Right Handed Units

RH

Deducts

LBX	Less Cement Box
LFP	Less Floor Plate
LTP	Less Top Pivot

Series

BTS80EMB

BTS80EMB	D	5	74010	RH	AMS		626	
-----------------	----------	----------	--------------	-----------	------------	--	------------	--

Package

C	1-1/2" Offset, Handed
C-E	1-1/2" Offset, 20 min Rated Handed
C-F	1-1/2" Offset, 3 h Rated Handed
D	3/4" Offset, Handed
E	3/4" Offset, 20 min Rated Handed
F	3/4" Offset, 3 h Rated Handed
G	CH Single Acting, Wood or Steel Door and Frame
H	CH Single Acting, Aluminum Door and Frame
I	Independent Hung, Non-Handed
IF	Independent Hung, Up to 3 h Rated, Non-Handed
L	3/4" Offset Lead Lined, Handed*
L-E	3/4" Offset Lead Lined, 20 min Rated Handed*
L-F	3/4" Offset Lead Lined, 3 h Rated Handed*

Spring size

5 — ANSI Size 5

Fastener packs

AMS	All Metal Screws
W2	All Wood Screws
W1	1/2 Wood Screws
AMSAWS	All Metal Screws All Wood Screws

Painted

600	Primed
689	Aluminum
690	Statuary Bronze
691	Dull Bronze
693	Black
695	Dark Duranodic Bronze
696	Gold
PNT	Special Sprayed Finish (must specify)
605	Bright Brass
606	Satin Brass
611	Bright Bronze
612	Satin Bronze
613	Oxidized Satin Oil Rubbed
618	Bright Nickel
619	Satin Nickel
625	Bright Chrome
626	Satin Chrome

Plated

Note: All combinations of features and options are not available for all models.

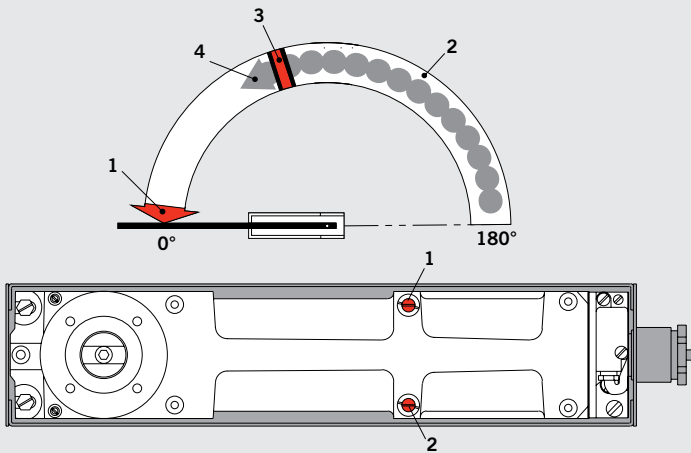
4

Technical details

- Door can be manually removed from hold open when current is applied to the unit.
- When no current is applied to unit, it will act as standard hydraulic floor closer.
- Loss of electrical current due to a signal from a smoke detector or other signaling device will open an electromagnetically controlled valve in the closer and close the door under full hydraulic control.
- Operating voltage 24 VDC at 125 mA +10% -15%.
- Compact closer body and cement case 2-3/8" deep suited for thin slab concrete construction.
- Closer body is handed.
- Accommodates doors weighing up to 660 lb and measuring up to 3'-6" wide exterior and 4'-0" interior.
- Mechanical backcheck at approximately 70°.
- Dual thermostatic control valves combined with special hydraulic fluid provide controlled closing from 180°.
- Multipoint hold open between approximately 65° and 175° when current is applied.
- A secondary regulation system protects closer from damage caused by forced closing.
- Closer adjustment in cement case provides lateral and longitudinal adjustment of 1/4" and height adjustment of 5/32".
- Optional sealing compound SC2 prevents water or cleaning solvent from entering the cement case.
- When considering hold open angle, allow approximately 4° of fall away.
- Unit is provided with approximately 10 feet of power cable.
- Fire door applications require power to be supplied through a U.L. listed fire alarm control panel.

If door hardware or adjacent structures interfere with maximum opening, or maximum opening is greater than 180°, an auxiliary stop is required.

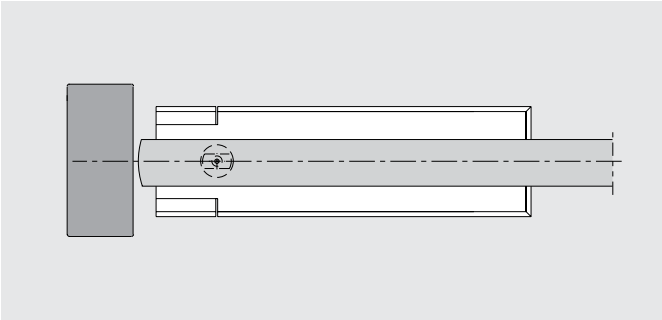
- 1 Valve adjustment 7°-0°
- 2 Valve adjustment 180°-0°
- 3 Mechanical backcheck at approximately 70°
- 4 Multipoint hold open between 65° and 175°



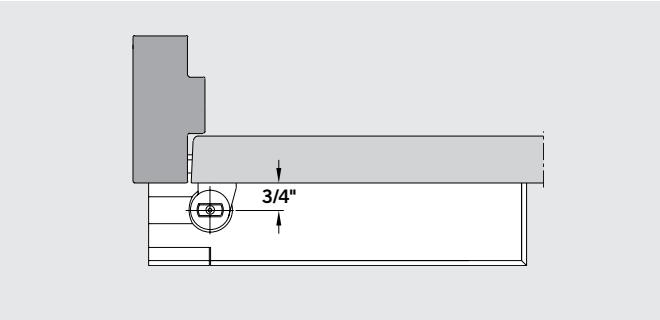
Applications

Accessory packages for the following applications are designated with an alpha suffix— "G" or "H," for example.
For application details and accessory illustrations, see BTS Applications and Accessories brochure.

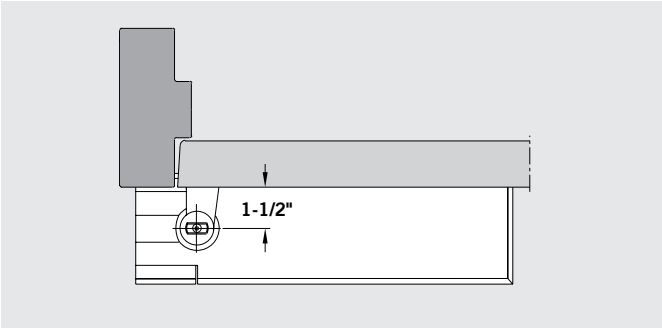
Center hung packages (G, H)



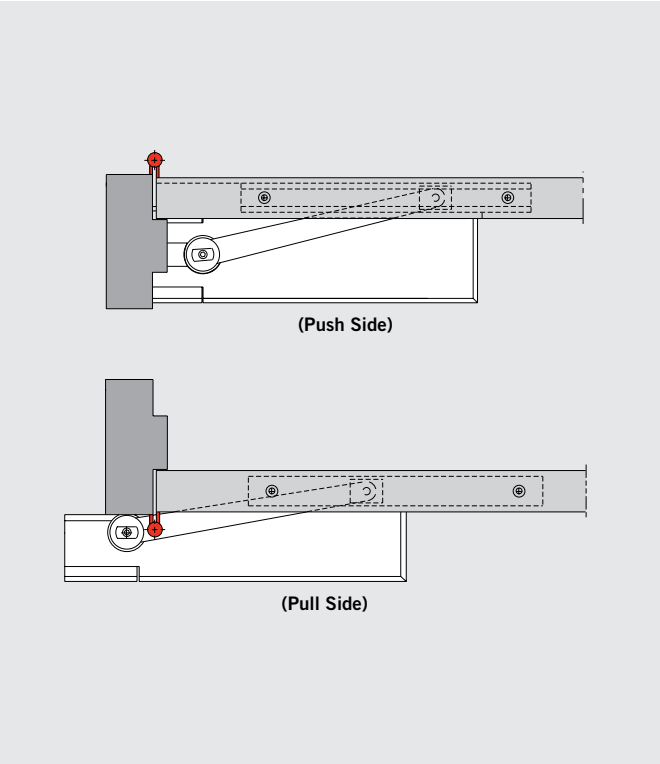
3/4" Offset packages (D, E, F, L, L-E, L-F)



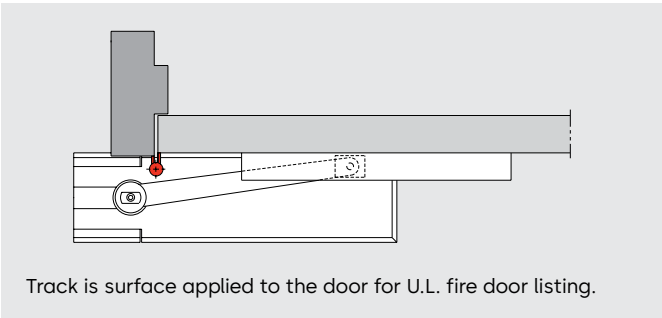
1-1/2" Offset packages (C, C-E, C-F)



Independent hung packages (I)



Independent hung fire door packages (IF)



Track is surface applied to the door for U.L. fire door listing.

Spindles

Spindle #	Dimension "x" (Door Clearance)	3° Offset Spindle #	Dimension "y"
74003	5/16"	80003	1/8"
74005	1/2"	80005	5/16"
74007	5/8"	—	7/16"
(STD) 74010	3/4"	80010	1/2"
74012	13/16"	—	5/8"
74015	7/8"	80015	11/16"
74020	1-1/8"	80020	7/8"
74025	1-5/16"	80025	1"
74030	1-1/2"	80030	1-5/16"
74035	1-11/16"	—	1-1/2"
74040	1-7/8"	—	1-11/16"
74045	2-1/16"	—	1-7/8"
74050	2-5/16"	—	2-1/16"

Offset spindles

Spindles are available with a 3° offset for additional pressure to hold door in the closed position. Normally, this is only necessary for center-pivoted single acting applications. However, they can also be used with other applications to compensate for templating errors. Specify hand of offset spindle when ordering.

Extended spindle insert

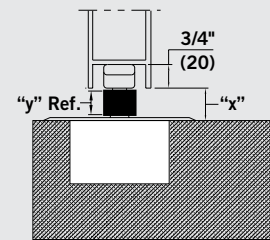
Closers with extended spindle inserts are used with thresholds, carpeted floors, or terrazzo pans, or in cases where more clearance between door and floor is required. All spindles are zinc plated.

Note: Closer and arm must be installed per template for door clearances shown to be valid.

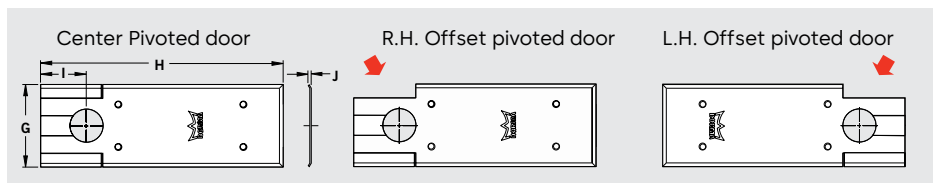
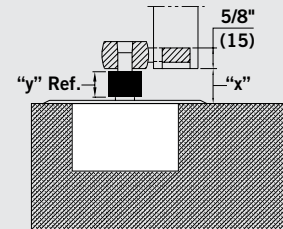
Cover plate

Universal cover plate 7410, suitable for left hand/right hand, 3/4" offset, 1-1/2" offset, and center pivoted doors. Material is stainless steel or brass depending on the plated finish specified.

Center hung applications



Offset hung applications



Our Sustainability Commitment

We are committed to foster a sustainable development along our entire value chain in line with our economic, environmental and social responsibilities toward current and future generations. Sustainability at product level is an important, future-oriented approach in the field of construction. In order to give quantified disclosures of a product's environmental impact through its entire life cycle, dormakaba provides Environmental Product Declarations (EPD), based on holistic life cycle assessments. <https://www.dormakabagroup.com/en/sustainability/product-declarations>.

Our offering

Access Automation Solutions

Entrance Automation
Entrance Security



Access Control Solutions

Electronic Access & Data
Escape and Rescue Systems
Lodging Systems



Access Hardware Solutions

Door Closers
Architectural Hardware
Mechanical Key Systems



Services

Technical Support
Installation and commissioning
Maintenance and Repair



Key & Wall Solutions

Key Systems
Movable / Sliding Walls



Safe Locks

Electronic Safe Locks
Mechanical Safe Locks
Boltworks and Accessories



Glass systems

Manual door systems
Glass fittings
Horizontal Sliding Walls



DHW_1738_BR_EN CEI 0625
Subject to change without notice

dormakaba USA Inc.
1525 Bull Lea Road, Suite 100
Lexington, KY 460511
1-800-950-4744
dormakaba.us



dormakaba.com