

ED UPS Battery Backup

Integrated emergency backup for the ED 100/250



Integrated reliability

The integration of an Uninterrupted Power Supply (UPS) within the housing of the ED 100/250 swing door operator ensures continued operation in the event of a power failure.

The emergency power supply can be easily retrofitted into existing ED operators and is also available as an option on all suitable new installations.

Integrated function

The modular design of the ED system offers both flexibility and simplicity.

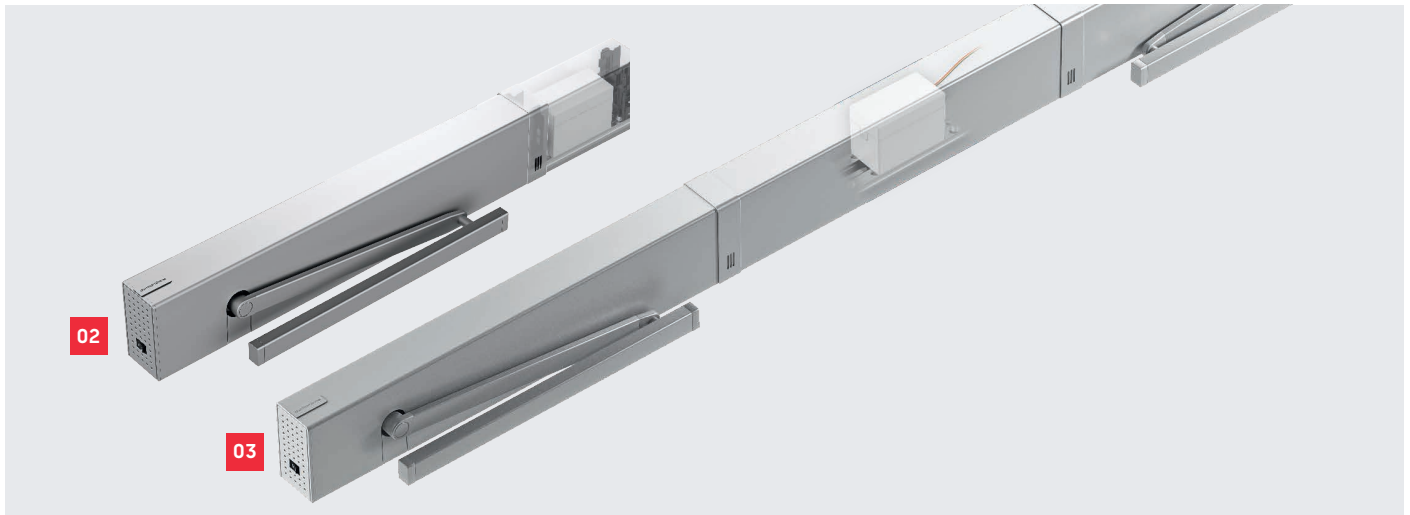
The UPS emergency battery integrates effortlessly into the ED system, maintaining a discreet and streamlined appearance.

- Ensures continued automatic operation during mains power failure
- Integrated design fits neatly within the existing operator housing
- Simple installation eliminates the need for external 230V UPS wiring

01 Version ED 250 for double-leaf door systems with integrated emergency power supply (illustration)

Factsheet

ED UPS Battery Backup Variations



Easy installation and commissioning

For new systems, the emergency power supply is installed simultaneously with the door operator and is fully integrated within the standard 70 mm-high cover of the ED operator.

In single-leaf systems, the unit is installed using an attachment kit positioned on the side of the main closing edge. With a compact length of only 230 mm, the total drive length becomes 915 mm once installed.

For double-leaf systems, the unit is centrally installed beneath the Vario or Professional cover requiring a minimum hinge spacing of 1,630 mm.

Sustainable and smart reliability

The battery backup system features high-performance, rechargeable lithium iron phosphate (LiFePO4) batteries, offering excellent capacity, energy density, and an extended service life, along with enhanced safety.

This battery technology significantly reduces the risk of thermal runaway (compared with lithium polymer batteries) and contains no cobalt.

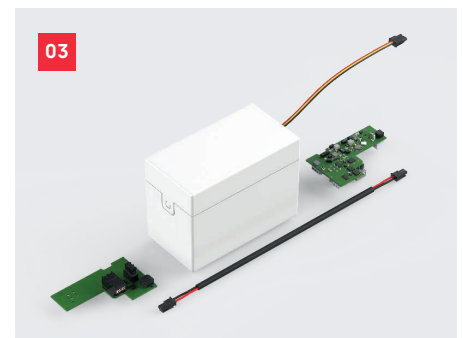
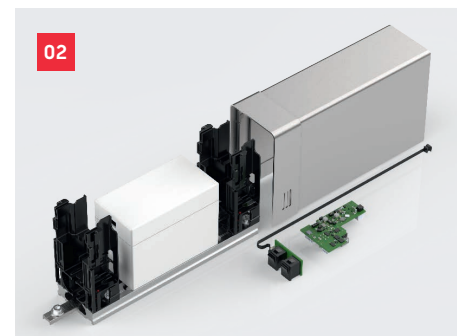
Depending on the application and hardware configuration, the system can provide emergency operation for up to 600 cycles on single-leaf doors and up to 300 cycles on double-leaf doors.

In standby mode, the emergency power supply remains active for up to 24 hours, ready to take over immediately if required.

Note

Due to the design, a simultaneous function of the integrated emergency backup with the integrated mechanical door coordinator (ED ESR Set) is currently not possible.

The integrated ED UPS Battery Backup is not suitable for fire rated door applications.



- 02 Set for single-leaf door system
- 03 Set for double-leaf door system

Please note: The range of functions available with this product is dependent on the final system configuration. For further information, please contact your local dormakaba office or partner.

Subject to change without notice 000361 | 03.25

For further information, our team is here to help.

