

# Terminal 97 00

Time and attendance recording and employee communication at its best.





# We've perfected form and function – for you

Stylish, versatile, practicable – this sums up the customizable high tech terminal 97 00 with proximity sensor. This versatile modular solution combines efficient time and attendance recording with modern employee communication. Everything inside. Everything customized to your company. Everything simply easy.

The terminal 97 00 sets benchmarks for functionality and design. And optimally adapts to the needs of your company. Experience time recording and staff communication at its best. Experience the terminal 97 00

The user interface is freely configurable – for instance in individual corporate design.

Even multimedia content like training films, company-related apps and employee info can easily be integrated.

With the text-to-speech function, the function key texts are spoken out loud. This helps visually impaired people with a secure and error-free operation of the terminal. Strong additional options like biometric reader or camera system hardly leave any wish unfulfilled.

The terminal 97 00 can be integrated in your company without any difficulty – and becomes readily indispensable.

# High tech with many highlights – features and benefits at a glance

**Bright 7" touchscreen**  
for intuitive operation

---

**Robust, scratch-proof and shock-resistant glass screen**  
for elegant look and durability

---

**Visual operational help**  
The respective active function appears in color

---

**Smart proximity sensor**  
for increased energy efficiency

---

**Multi RFID reader**  
for contactless identification

---

**Optional multi RFID reader with BLE**  
for comfortable booking with a smartphone

---

**Optional biometric reader**  
for convenient and unique identification

---

**Freely configurable user interface**  
for individual icons and content

---

**Integration of apps**  
for company-specific requirements with HTML5 support

---







**WiFi and mobile communication connection**  
for wireless data transfer

---

**Modern design**  
easy to design with own logo and CI

---

**Multi-lingual user guide**  
for intuitive operation by your staff

---

**CardLink function**  
for easy integration of offline door components

---

**Thousand-fold proven software**  
for a reliable operation

---

**PoE, 24 V DC or 230 V AC**  
for a universal power supply

---

**Compatible with previous versions**  
for a problem-free upgrade

---

**Text-to-speech**  
Spoken function key text for helping visually impaired operators

---

**Loudspeaker and microphone**  
for barrier-free design and multimedia content

---

with freely  
configurable user  
interface



01

Standard interface  
(ex works)

02

Interface with  
white background

03

Interface with  
company-specific  
background image

04

Freely configured  
interface in  
corporate identity

05

Presentation of the  
company's image film

# Maximum design freedom – your chosen look and acoustics

The terminal 97 00 makes a statement with its looks and beyond. Even the user interface is convincing with attractive, modern design. Would you rather like to choose the look yourself? No problem. The user interface is freely configurable, and with a few simple steps, it appears as individual as your company.

Various standard layouts are supplemented with more than 250 freely selectable icons in different colors – leaving no design wish unfulfilled. Be it your own colors, background images, logo, symbols, signal tones, the language output or multimedia content – you decide how your terminal should look and sound.



02



03



04



05

# Ready to go in no time – thanks to easy installation and commissioning

## Simply kick off:

- Network integration via Ethernet port
- Power supply optionally with Power over Ethernet (PoE), 24 V DC or 230 V AC
- Supports common RFID media
- Compatible with previous series

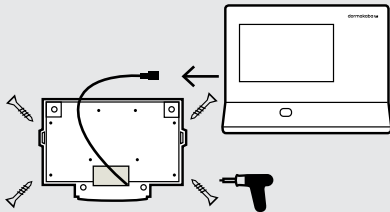




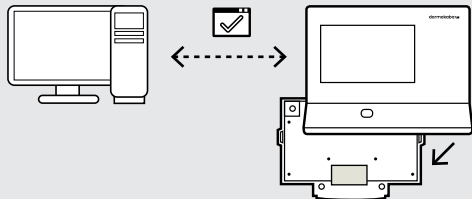
# Quick and easy commissioning

The docking station supplied enables fast, easy and reliable installation. It's as simple as this:

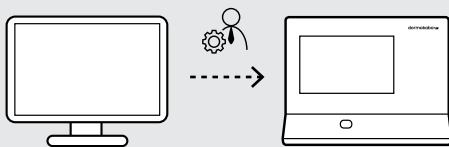
1. Fix docking station on the wall and connect the pre-installed network cable



2. Dock on terminal for automatic network registration



3. User-friendly configuration



# Smartphone instead of RFID card

Simply book with smartphone: the optional function for Mobile Access makes it possible. Recording working hours and opening doors with a smartphone\* – that is popular with most of the staff. The RFID card is sometimes forgotten, but your staff always has their smartphone with them. Therefore, using the smartphone as registration medium at the terminal – or as a complete registration station for time recording – reduces the correction bookings piling up in HR and thus reduces your effort for managing and issuing RFID cards. And smartphones being very personal objects, they are not handed over to other colleagues for use.

\* Scope of functions depends on the dormakaba system solutions used.



## Biometric reader

With the optional biometric reader, the finger becomes the personal RFID card which you carry at all times. Just press the finger briefly to the reader, and you are reliably identified. Tip: For more security, the biometric identification can also be combined with a standard RFID reader or a PIN input.



# All options and packages at a glance

9700-K6	Option package 97 20	Option package 97 40	Option package 97 60
<b>Device software</b>			
B-client HR30	●	●	●
<b>Reader</b>			
Multi RFID reader (LEGIC/MIFARE) with BLE	●	●	●
HID iClass SE proximity reader	○	○	○
Other RFID readers <sup>2</sup>	○	○	○
Biometric reader for 500/3,000/5,000 persons <sup>3</sup>	○	○	○
Magnetic stripe reader <sup>2</sup>	○	○	○
Barcode CCD scanner	○	○	○
<b>Host Interface</b>			
10/100/1,000 Ethernet interface (IPv4, IPv6)	●	●	●
WLAN	○	○	○
<b>Power supply</b>			
Power over Ethernet	●	●	●
24 V DC 4	○	○	○
100 V – 230 V AC 4	○	○	○
Uninterruptable power supply	○	○	○
<b>Options</b>			
Door control	○	○	●
Data encryption	●	●	●
CardLink / AoC / DoC	○	●	●
Camera system <sup>3</sup>	○	○	○
Mobile Access – booking with a smartphone	○	●	●
<b>Storage options</b>			
200 persons	●	–	–
1,000 persons	○	●	–
2,000 persons	○	○	●
10,000 persons	○	○	○
<b>Design</b>			
Docking station	●	●	●
Elastic protective frame	○	○	○
Increased class of protection IP54	○	○	○
Flush-mounted housing	○	○	○
Mounting plate	○	○	○

**Note:** The scope of effectively available product functions depends on the context in which the system is used.

Standard ●  
Option ○  
Not possible –

## Our Sustainability Commitment

We are committed to foster a sustainable development along our entire value chain in line with our economic, environmental and social responsibilities toward current and future generations. Sustainability at product level is an important, future-oriented approach in the field of construction. In order to give quantified disclosures of a product's environmental impact through its entire life cycle, dormakaba provides Environmental Product Declarations (EPD), based on holistic life cycle assessments. <https://www.dormakabagroup.com/en/sustainability/product-declarations>.

## Our offering

### Access Automation Solutions

Entrance Automation  
Entrance Security



### Access Control Solutions

Electronic Access & Data  
Escape and Rescue Systems  
Lodging Systems



### Access Hardware Solutions

Door Closers  
Architectural Hardware  
Mechanical Key Systems



### Services

Technical Support  
Installation and commissioning  
Maintenance and Repair



### Key & Wall Solutions

Key Systems  
Movable / Sliding Walls



### Safe Locks

Electronic Safe Locks  
Mechanical Safe Locks  
Boltworks and Accessories



### Glass systems

Manual door systems  
Glass fittings  
Horizontal Sliding Walls



EAD\_1783\_BR\_EN CEI 0525  
Subject to change without notice

**dormakaba USA Inc.**  
6161 E 75th Street  
Indianapolis, IN 46250  
1-866-559-5508  
**dormakaba.us**



dormakaba.com