

Terminal 96 00

Time recording and access control in a compact design





The perfect entry solution – simply beautiful and beautifully simple

Secure straightforward time recording, door control and modern employee communication – all are combined in the dormakaba Terminal 96 00.

This extendable versatile solution comes in a compact design and is distinguished by a high degree of stability.

The user interface offers extensive configuration options to be adapted to your corporate identity featuring company-specific content and applications.

Additional options like CardLink extend the scope of functions, making it demand-oriented and custom-fit. And the best part: Thanks to 1-click installation and Power over Ethernet (PoE), the terminal 96 00 is installed in a few simple steps – and immediately ready to use.

Thanks to the optional class of protection IP65, the terminal, with its robust housing and the impact-resistant glass screen, is extra dust- and water-proof – and thus highly durable even in outdoor installation.

High tech in compact design – features & benefits at a glance

Bright 4" touchscreen
for intuitive operation

Multi RFID reader
for contactless identification with LEGIC or MIFARE media

Optional multi RFID reader with BLE
for comfortable booking with a smartphone

Optional class of protection IP65
for reliable protection from dust and water

Stable housing and robust glass screen
for durability

Freely configurable user interface
for individual icons and content

Integration of apps
for company-specific requirements

Door control
for simple access control



WiFi and mobile communication connection

for wireless data transfer

1-click installation

for quick and easy commissioning

Modern design

for a representative corporate image

CardLink function

for easy integration of offline door components

Power over Ethernet (PoE)

for an uncomplicated power supply and network integration

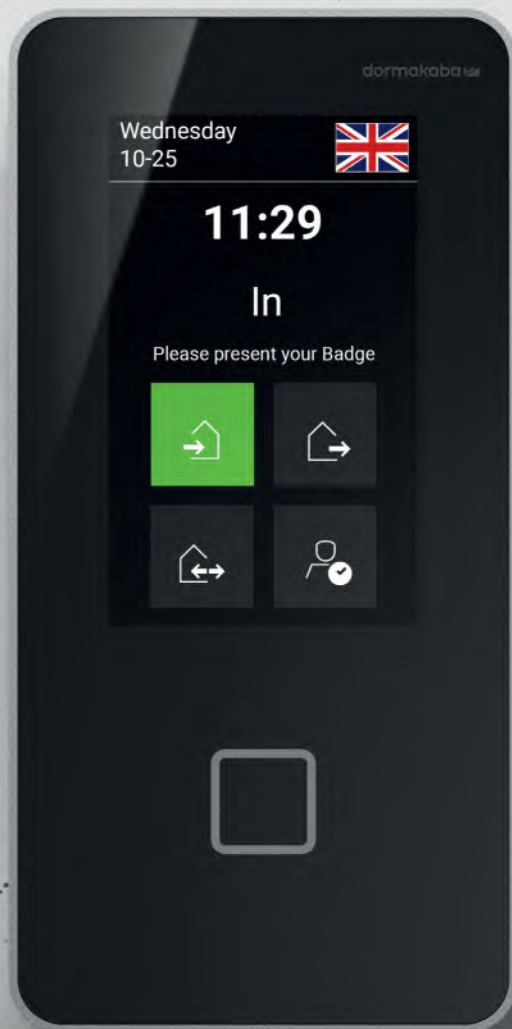
Compatible with previous versions

for a problem-free upgrade

Integrated speaker

for clear audio output as acoustic signal or language

with freely
configurable user
interface



01

New standard
interface (ex works)

02

Interface with
white background

03

Interface with
company-specific
background image

04

Freely configured
interface in
corporate identity

05

Customized interface

Maximum design freedom – your chosen look and acoustics

The terminal 96 00 makes a statement with its looks and beyond. Even the user interface is convincing with attractive, modern design. Would you rather like to choose the look and acoustics yourself? No problem. The user interface is freely configurable, and with a few simple steps, it appears as individual as your company.

Say goodbye to pre-set display layouts: Be it your own colors, background images, logo, symbols, apps or multimedia content – you decide how your terminal should look.

With the text-to-speech function, the function key texts are spoken out loud. This helps visually impaired people with a secure and error-free operation of the terminal.



02



03



04



05

Ready to go in no time – thanks to easy installation and integration

Simply kick off:

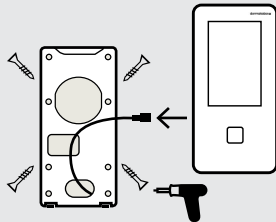
- Network integration via Ethernet port
- Power supply with Power over Ethernet (PoE)
- Supports common RFID media
- Compatible with previous terminal series



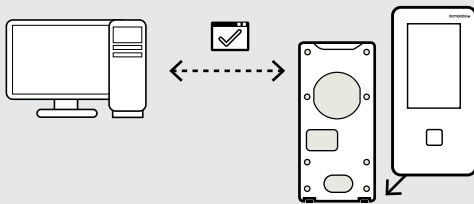
Quick and easy installation

Fast, easy and secure mounting:

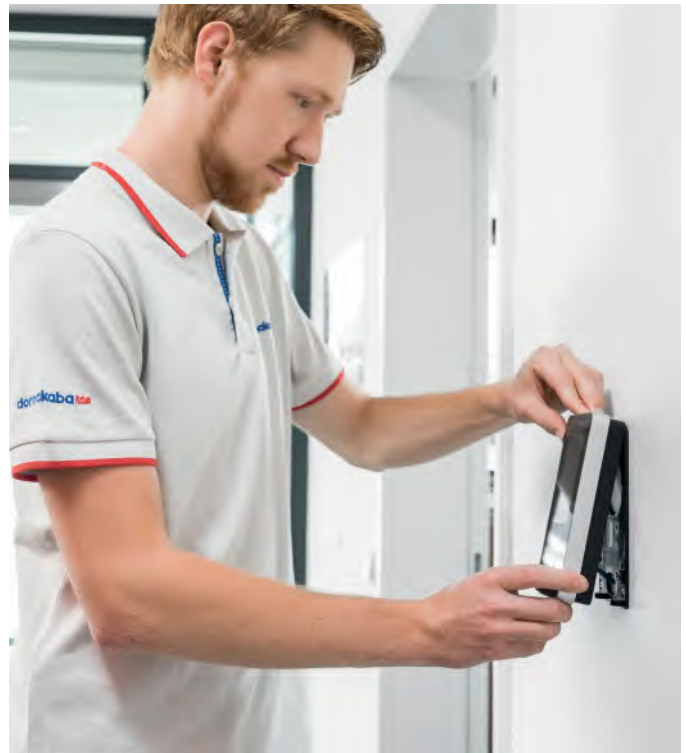
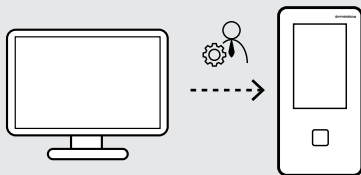
1. Secure wall mounting plate



2. Attach and secure terminal for automatic network login (DHCP)



3. User-friendly configuration



Smartphone instead of ID card



Simply book with smartphone: the optional function for Mobile Access makes it possible. Recording working hours and opening doors with a smartphone* – that is popular with most of the staff. The ID card is sometimes forgotten, but your staff always has their smartphone with them. Therefore, using the smartphone as registration medium at the terminal – or as a complete registration

station for attendance recording – reduces the correction bookings piling up in HR and thus reduces your effort for managing and issuing ID cards. And smartphones being very personal objects, they are not handed over to other colleagues for use.

* Scope of functions depends on the dormakaba system solutions used

All option packages at a glance

9600-K6	Option package 96 20	Option package 96 40	Option package 96 60
Device software			
B-client HR20	●	●	●
Reader			
Multi RFID reader (LEGIC/MIFARE) with BLE	●	●	●
HID iClass SE proximity reader	○	○	○
Host interface			
10/100/1000 Ethernet Interface (IPv4, IPv6)	●	●	●
WLAN	○	○	○
Power supply			
Power over Ethernet	●	●	●
Options			
Door control	○	○	●
Data encryption	●	●	●
CardLink / AoC / DoC	○	●	●
Mobile Access – booking with a smartphone	○	●	●
Storage options			
200 persons	●	–	–
1,000 persons	○	●	–
2,000 persons	○	○	●
10,000 persons	○	○	○
10,000+ persons	○	○	○
Design			
Increased protection class IP65	○	○	–
Surface-mounted cable feed	○	○	–
Add-on I/Os (surface-mounted)	○	○	●
Remote I/Os (flush-mounted)	○	○	○

Note: The scope of effectively available product functions depends on the context in which the system is used.

Standard ●
Option ○
Not possible –

Our Sustainability Commitment

We are committed to foster a sustainable development along our entire value chain in line with our economic, environmental and social responsibilities toward current and future generations. Sustainability at product level is an important, future-oriented approach in the field of construction. In order to give quantified disclosures of a product's environmental impact through its entire life cycle, dormakaba provides Environmental Product Declarations (EPD), based on holistic life cycle assessments. <https://www.dormakabagroup.com/en/sustainability/product-declarations>.

Our offering

Access Automation Solutions

Entrance Automation
Entrance Security



Access Control Solutions

Electronic Access & Data
Escape and Rescue Systems
Lodging Systems



Access Hardware Solutions

Door Closers
Architectural Hardware
Mechanical Key Systems



Services

Technical Support
Installation and commissioning
Maintenance and Repair



Key & Wall Solutions

Key Systems
Movable / Sliding Walls



Safe Locks

Electronic Safe Locks
Mechanical Safe Locks
Boltworks and Accessories



Glass systems

Manual door systems
Glass fittings
Horizontal Sliding Walls



EAD_1784_BR_EN CEI 0525
Subject to change without notice

dormakaba USA Inc.
6161 E 75th Street
Indianapolis, IN 46250
1-866-559-5508
dormakaba.us



dormakaba.com