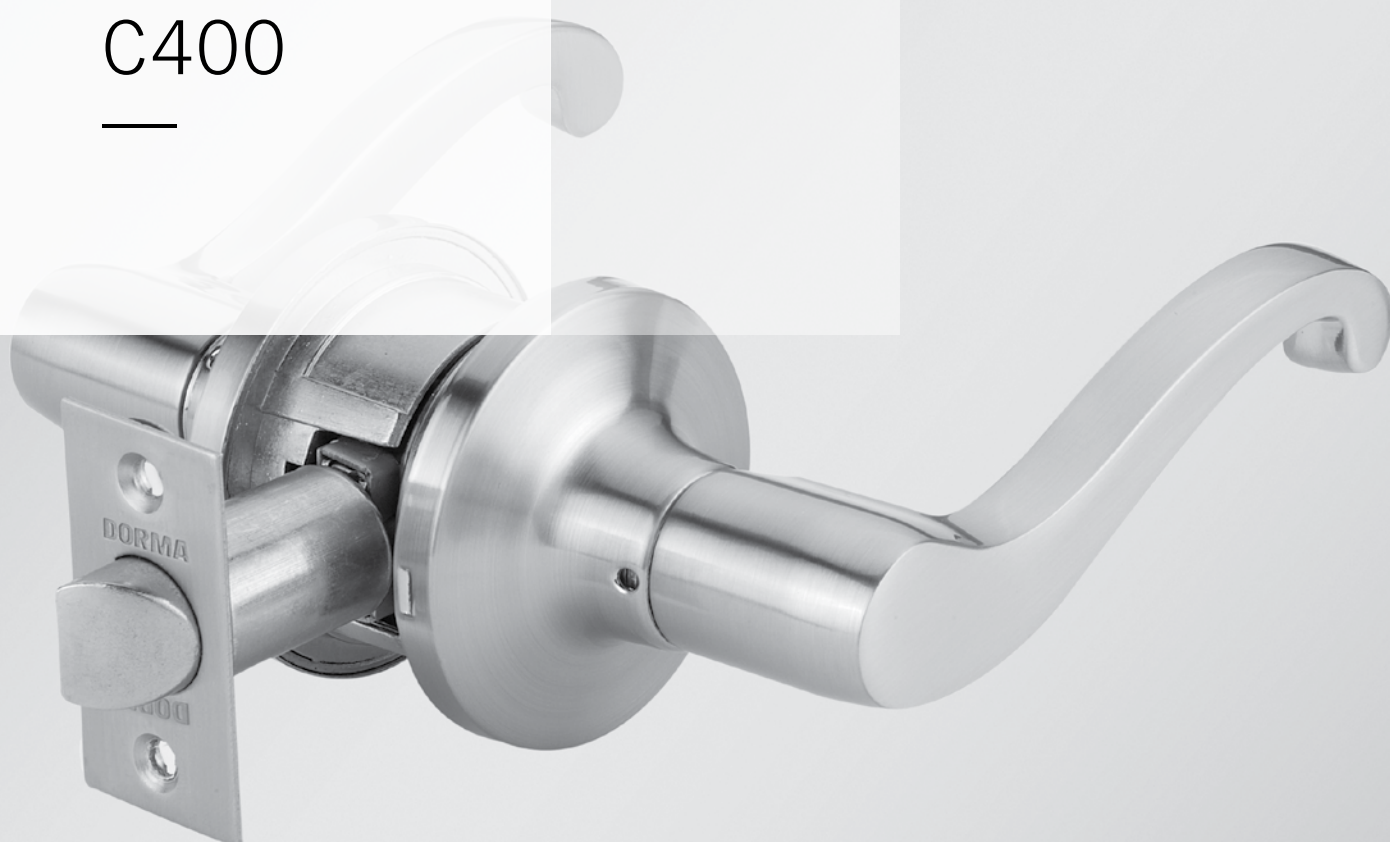


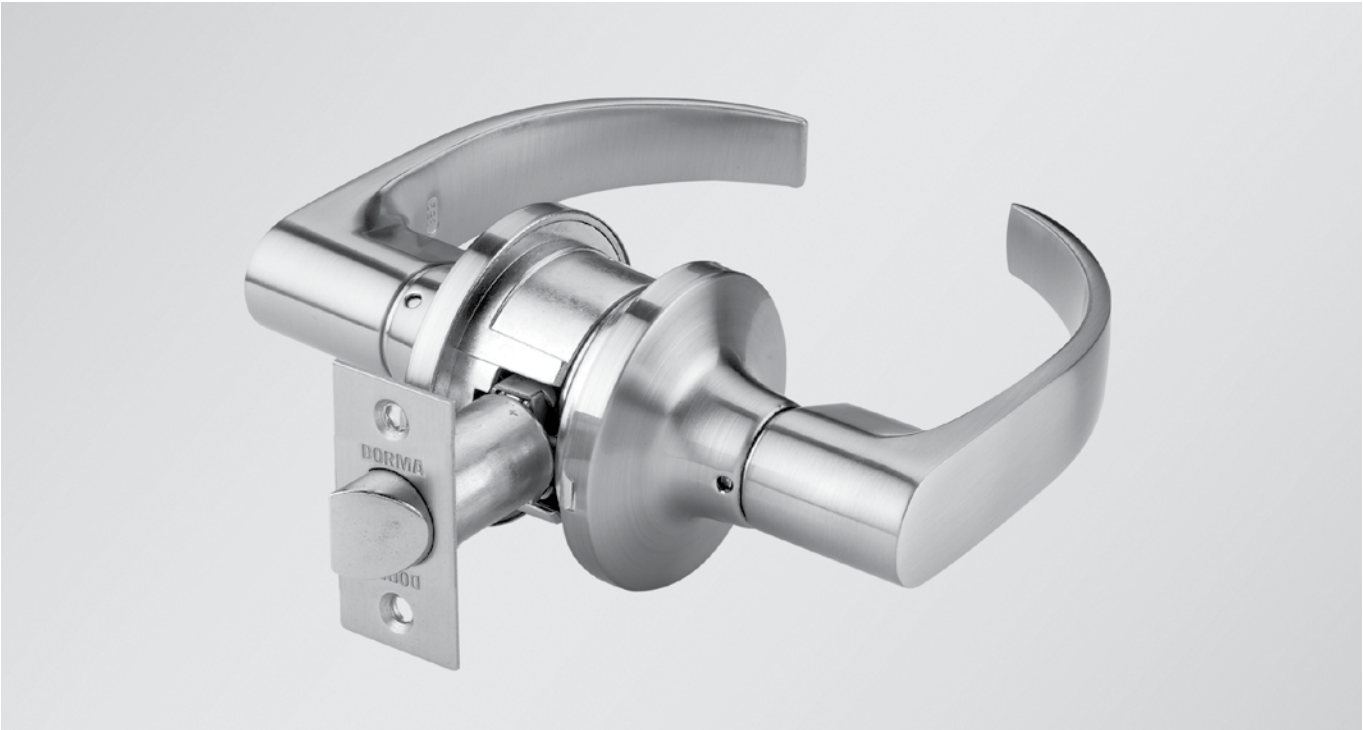


C400

—



Grade 2 Tubular Locksets



CONTENTS

C400 Grade 2 Tubular Locksets	Features	3
	Technical Details	3
	How to Order	4
Trim Options	C400 Levers	5
Functions	Available Functions	6
Lock Options	1/2" Throw Latch Bolt	7
	Full Lip Strike	7
	T-Strike	7

DORMA USA quality and environmental management systems in Reamstown, PA and Steeleville, IL are certified to ISO 9001:2008 and ISO 14001:2004.



DORMA'S C400 SERIES GRADE 2 TUBULAR LOCKSETS

Providing the aesthetics and dependability required for many applications.

C400 Series locksets are built with a tubular chassis for all applications where ANSI/BHMA Standard A156.2 Series 4000 Grade 2 products are required. To meet the aesthetic needs of your project, these versatile locks are available in a range of trim — choose between the LR, LC, LG, LV, or LF lever designs.

Features

- All DORMA C400 Series locks feature advanced design concepts for reliability and are manufactured with select materials for extra durability.
- DORMA C400 Series locks are easy to install in both wood or hollow metal doors with ANSI/BHMA Standard A156.115 door preparations for bored locks.
- All C400 Series locks are easily adjustable to accommodate door thicknesses from 1-3/8" to 1-3/4" thick.

Recommended Applications

- Apartments
- Assisted Living
- Condominiums
- Other Multifamily Housing

Technical Details

- Non-handed for easy installation.
- Through-bolted passage and privacy locksets provide added strength and security.
- Lock chassis constructed of steel and pressure cast zinc components for superior strength, durability, and corrosion resistance.

Certification/Compliance

ANSI/BHMA
Meets A156.2

Series 4000, Grade 2.

Meets A117.1
accessibility code and
ADA requirements for
barrier-free accessibility.



Warranty

For details, refer to **Limited Warranty Policy** in the current DORMA Price List.

Finishes

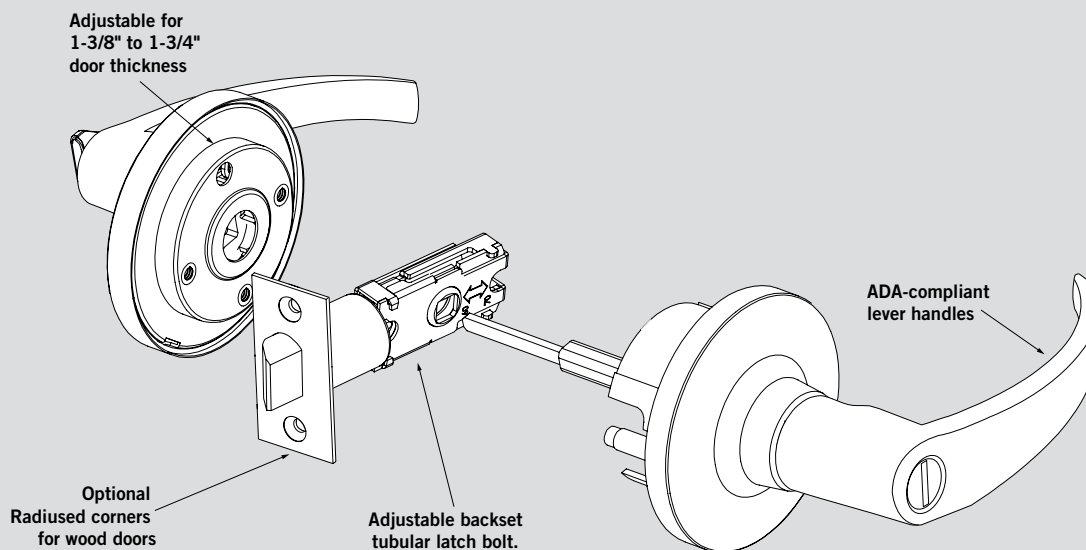
- Brass: 605 (Bright).
- Bronze: 613 (Dark Oxidized Satin).
- Nickel¹: 619 (Satin).
- Chrome²: 626 (Satin).
- Stainless: 629 (Bright) or 630 (Satin).

1. 619 finish only available on LF and LV lever designs.
2. 626 finish only available on LR, LC, and LG lever designs.

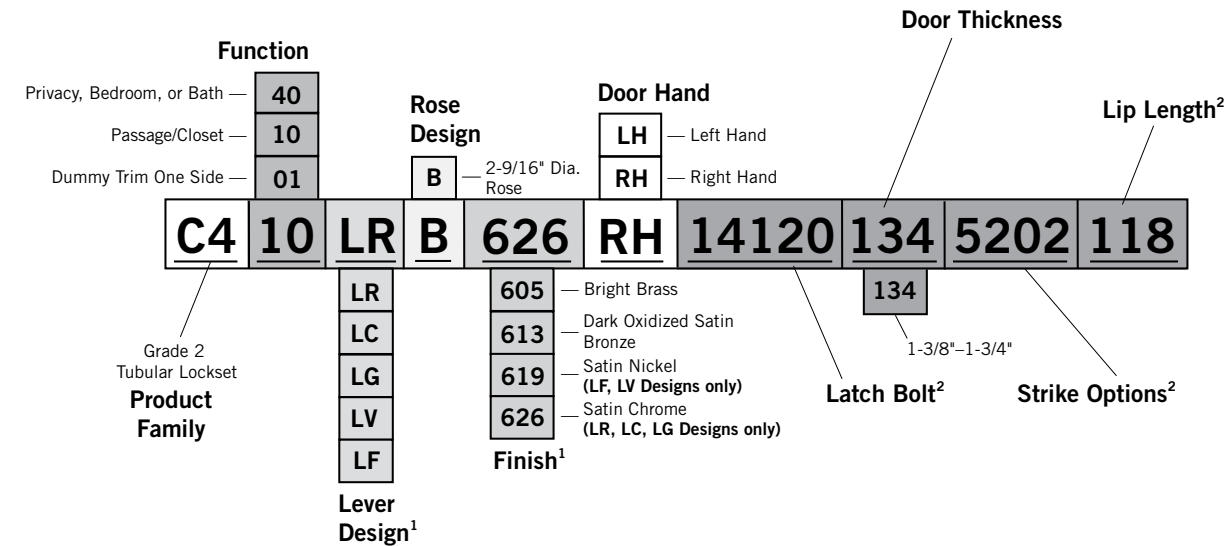
Special Finish Notes

ANSI/BHMA A156.18 standards describe 613 Dark Oxidized Satin Bronze finish as a category B finish. B category finishes, "do not match from one alloy or form of material to the next and from one manufacturer to the next." The 613 finish may vary between manufacturers' products and models.

In some instances, for customer convenience, the most appropriate BHMA finish symbols are used to indicate similarity of appearance, regardless of base metal or finishing process. Finishes of latches, strikes, cylinders/cores, and visible mounting screws, though similar in appearance, may differ from the finish of the trim. Finish designations in the 600 numbers are the BHMA (Builders Hardware Manufacturers Association) industry standard.



HOW TO ORDER C400 SERIES LOCKS

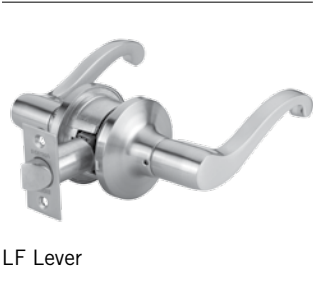
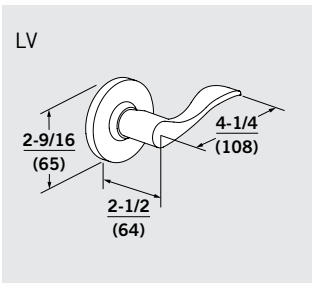
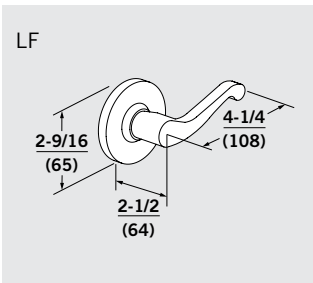
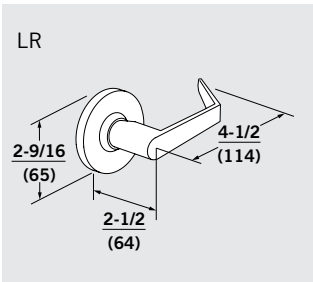
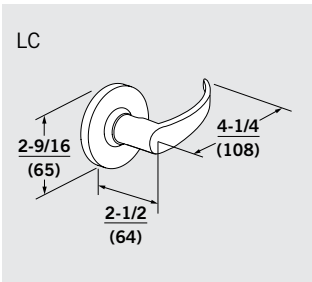
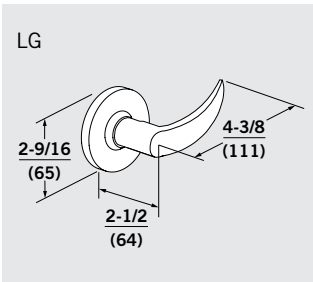


1. For split finishes, consult factory.
2. Example shows default values. Refer to Lock Options section for full details.

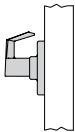
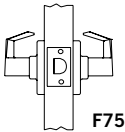
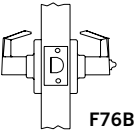


TRIM OPTIONS

Lever Designs



FUNCTIONS

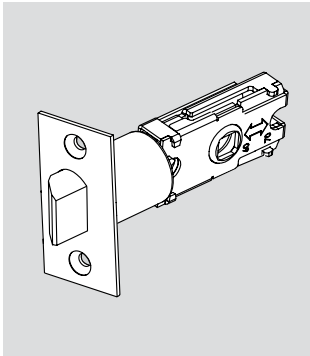
Function	Series	Outside/Inside	Description
Dummy Trim One Side	C401		<ul style="list-style-type: none">Used as pull or matching trim on pairs of doors.Trim is surface mounted.
Passage	C410	 F75	<ul style="list-style-type: none">Latch bolt operated by trim either side.
Privacy	C440	 F76B	<ul style="list-style-type: none">Latch bolt operated by trim either side.Outside trim locked by turn button inside.Outside trim unlocked by emergency release outside.Outside trim unlocked by trim inside.



Indicates rigid lever

LOCK OPTIONS

Latch Bolt

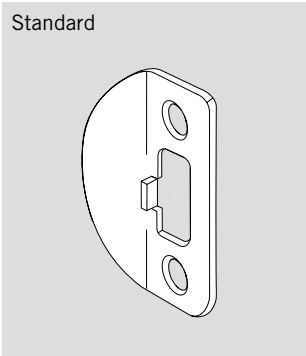


- 14120** — 2-3/8"-2-3/4" adjustable backset. 1" faceplate. Square corner. Default for all C400 Series locks.
- 14121** — 2-3/8"-2-3/4" adjustable backset. 1" faceplate. 1/4" radius corner.
- 14123** — 2-3/8"-2-3/4" adjustable backset. 1" faceplate. 1" diameter drive-in.

*All locks come with spacer for doors with 1-1/8" faceplate prep.

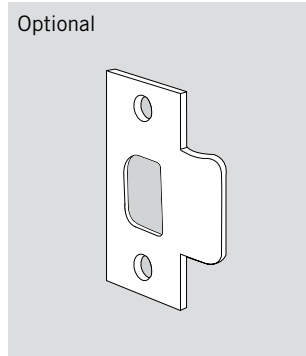
Strikes

Standard



- 5201** — 1-5/8" × 2-1/4" square full curved lip strike. 1-1/8" lip length. Optional for all C400 Series locks.
- 5202** — 1-5/8" × 2-1/4" full curved lip strike with 1/4" radiused corners. 1-1/8" lip length. **Default strike for all C400 Series locks.**

Optional



Dust box included.

- 5101** — 1-1/8" × 2-3/4" square T-strike. 1-1/8" lip length. Optional for all C400 Series locks.
- 5102** — 1-1/8" × 2-3/4" T-strike with radiused corners. 1-1/8" lip length. Optional for all C400 Series locks.

For optional 1-1/2" lip length, specify 5101-112 or 5102-112.



www.dorma.com



DORMA USA, Inc.
Dorma Drive, Drawer AC
Reamstown, PA 17567
Tel: 800 523 8483
Fax: 800 274 9724
archdw@dorma-usa.com

DORMA Canada
1680 Courtney Park Drive, Unit 13
Mississauga, Ontario L5T 1R4
Tel: 800 387 4938
Fax: 905 670 5850
www.dormacanada.com

DORMA Mexico
Calle Sur 110 no. 63, Col. Tolteca
01150 México, D.F.
Tel: 5255 5272 6937
Fax: 5255 5272 6948
operacion@dorma.com.mx