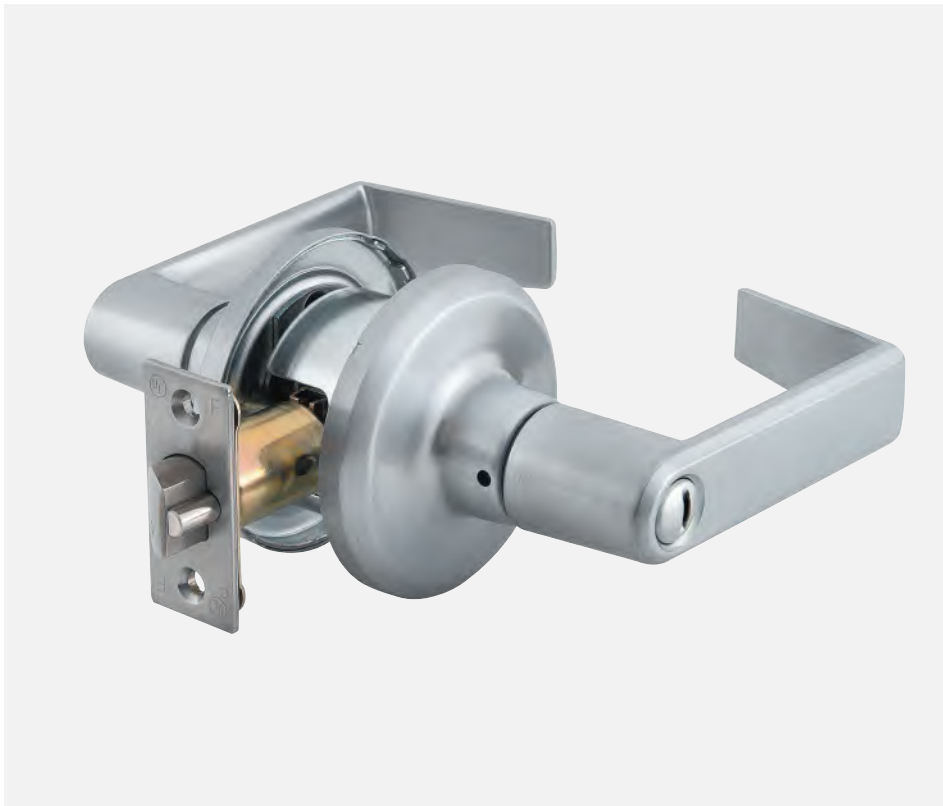


QTL200

Tubular locks



Features

- **Reliable security.** With features like 1/2" stainless steel latchbolt design and clutching mechanisms, plus an available option for hurricane compliance, QTL200 series locks ensure reliable security.
- **User-friendly features.** A built-in anti-lockout function ensures that if the QTL200 lock is engaged from the inside, it will unlock with a simple push on the interior lever or turn of a button.
- **Better warranties.** The QTL200 lock series comes with lifetime mechanical and three-year finish warranties.
- **Durable safety.** We designed the QTL200 series with heavy-duty torsion springs to prevent lever sag and ensure long-term durability. Each lock in the series is BHMA/ANSI Grade 2 and UL certified.
- **Simple retrofit.** Choose locks with a SFIC option or keep your existing small format cores and use them with QTL200 series locks. Standard door prep and the same thru bolt pattern found in other common locks makes retrofit quick and easy.
- **Easy installation.** Compartmentalized packaging and an adjustable backset latch make QTL200 locks more flexible and easier to install.

Quality, reliability, and value

The QTL200 series builds on our proven quality and reliability while providing a solid value lever lock for light commercial applications. When you need a tubular lock in standard-duty doors, the QTL200 series delivers design features that make installation and retrofitting simpler throughout the product's lifespan.

The QTL200 series locks deliver quality, durability, and flexibility for a wide range of light commercial applications.

Flexibility and simplicity for light commercial applications

We designed the QTL200 tubular lock series to deliver the flexibility needed in a wider range of applications. From design to construction to packaging, the QTL200 series meets the demands of more applications.

Reliable value

The QTL200 series combines premium materials, construction, and performance at a great value—both in your up-front investment and in long-range durability.



QTL200 Standard duty tubular lock specifications

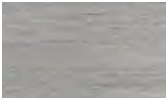
Certifications	ANSI/BHMA A156.2 Series—Grade 2 ANSI A117.1 Accessibility Code (ADA compliant) UL/cUL listed (3 hour) for "A" label single door applications (4' by 8') UL10C/UBC 7-2 (1997) positive pressure rated UL10B pressure rated California State Reference Code (formerly Title 19 – Fire Marshal) Hurricane Compliant – Miami DADA N.O.A.	
Product specifications	Standard door thickness: 1 3/8" (35mm) – 1 3/4" (51mm) Backset: 2 3/4" (70mm) or 2 3/8" (60mm) standard Strike: full lip strike standard (57mm x 44.4mm); other strike options also available Latch bolt: 1/2" (13mm) steel throw Latch faceplate: 1" (25.4mm) x 2 1/4" (57mm) standard	
Keying	6-pin non-IC brass cylinders 6- or 7-pin SFIC option available Two keys per lockset Keying options include: master keying, grand master keying, construction keying Keyway options include: BF-SFIC "F", KW-Kwikset, WE-Weiser, SC-Schlage, GA-Yale, LA-Sargent, LC-Less Cylinder	
Functions	ANSI F75	QTL220 Single Dummy
	ANSI F76B	QTL230 Passage
	ANSI F82	QTL240 Privacy
	ANSI F82	QTL250 Entry/Office
	ANSI F84	QTL251 Entry/Office SFIC
	ANSI F84	QTL260 Classroom
	ANSI F86	QTL261 Classroom SFIC
	ANSI F86	QTL270 Storeroom
		QTL271 Storeroom SFIC
Finishes	605: Bright Brass, 613: Oil Rubbed Bronze, 619: Satin Nickel, 625: Bright Chrome, 626: Satin Chrome	
Warranties	Lifetime mechanical, three-year finish (613 carries no finish warranty)	



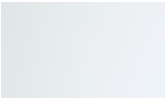
605: Bright Brass



613: Oil-rubbed
Bronze



619: Satin Nickel



625: Bright Chrome



626: Satin Chrome

© dormakaba 2025 Information on this sheet is intended for general use only. dormakaba reserves the right to alter designs and specifications without notice or obligation.

Any questions? We would be happy to advise you.
Contact us at: 1-800-523-8483