

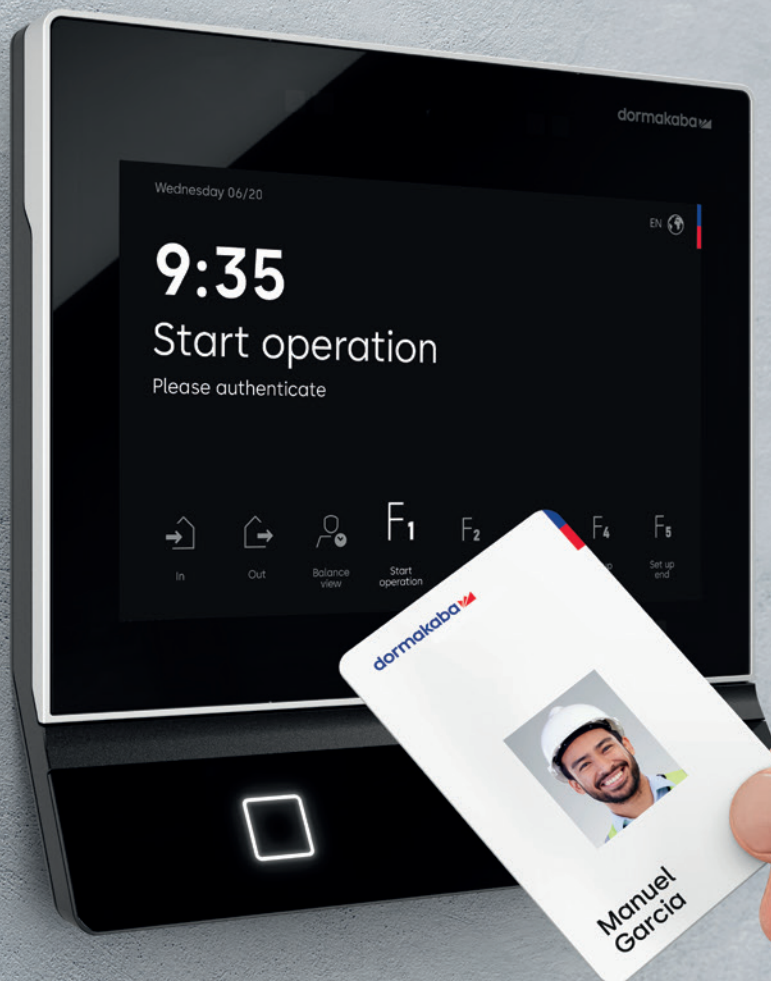
# Time for individuality

dormakaba terminals 96 00 and 98 00



# What matters to you in time recording?

The dormakaba terminals 96 00 and 98 00 of the latest K7 series are designed to meet your individual requirements of today and tomorrow. They combine the unique experience of dormakaba in the field of employee time recording since 1900 with the latest technologies and possibilities for a working world that is changing ever faster.



# Time for individuality

We live in a time in which individuality is becoming increasingly important for people. The dormakaba terminals are an expression of this development: They support individual working time models, they fulfill employees' individual information needs, and they are designed to adapt to different requirements and design ideas.



## Flexibility

Choose from different sizes, functions, and options. You can customize the user interface. The terminals can be operated in various languages. The text-to-speech function provides a spoken output of the function key texts for the visually impaired.



## Future-ready technology

By using new security standards, you benefit from a high level of device security in the long term. With a large memory of 50,000 master records and 200,000 transactions, you won't reach your limits any time soon.



## Sustainability

The durable terminals work energy-efficiently with a proximity sensor. They can be repaired and recycled after a long service life.



## Easy integration

Integration is simple using the B-COMM communication software. WLAN ensures connectivity. The terminals can be installed with no additional infrastructure. Only Power over Ethernet (PoE) is required.

# Versatile for your requirements

The reliable dormakaba terminals offer you easy electronic time recording, access control, and shop floor data collection.



Terminal 96 00

## More convenience with a bunch of identification options

People can identify themselves with an RFID card, key fob, or their smartphone at the integrated multi RFID reader. Biometric identification by fingerprint is also available – for simplified user management as well as greater convenience and protection against confusion. In addition, facial recognition will soon follow for the terminal 98 00.



Terminal 98 00

## Long-term reliability even in rough environments

The terminals have a robust housing with a cast metal rear panel. The intuitive touch display is impact- and scratch-resistant. IP65 protection is available for outdoor use of the terminals. This means they work reliably year after year in rough environments. And if the worst comes to the worst, the components can be repaired.



Terminal 96 00

### Easy control and updating of access rights

As an option, you can also use the terminals for door control or as a CardLink/AoC update terminal for your access solution. The camera can also read QR codes and use them to grant access rights. It is also possible to take photos of users during electronic time recording to prevent buddy punching.

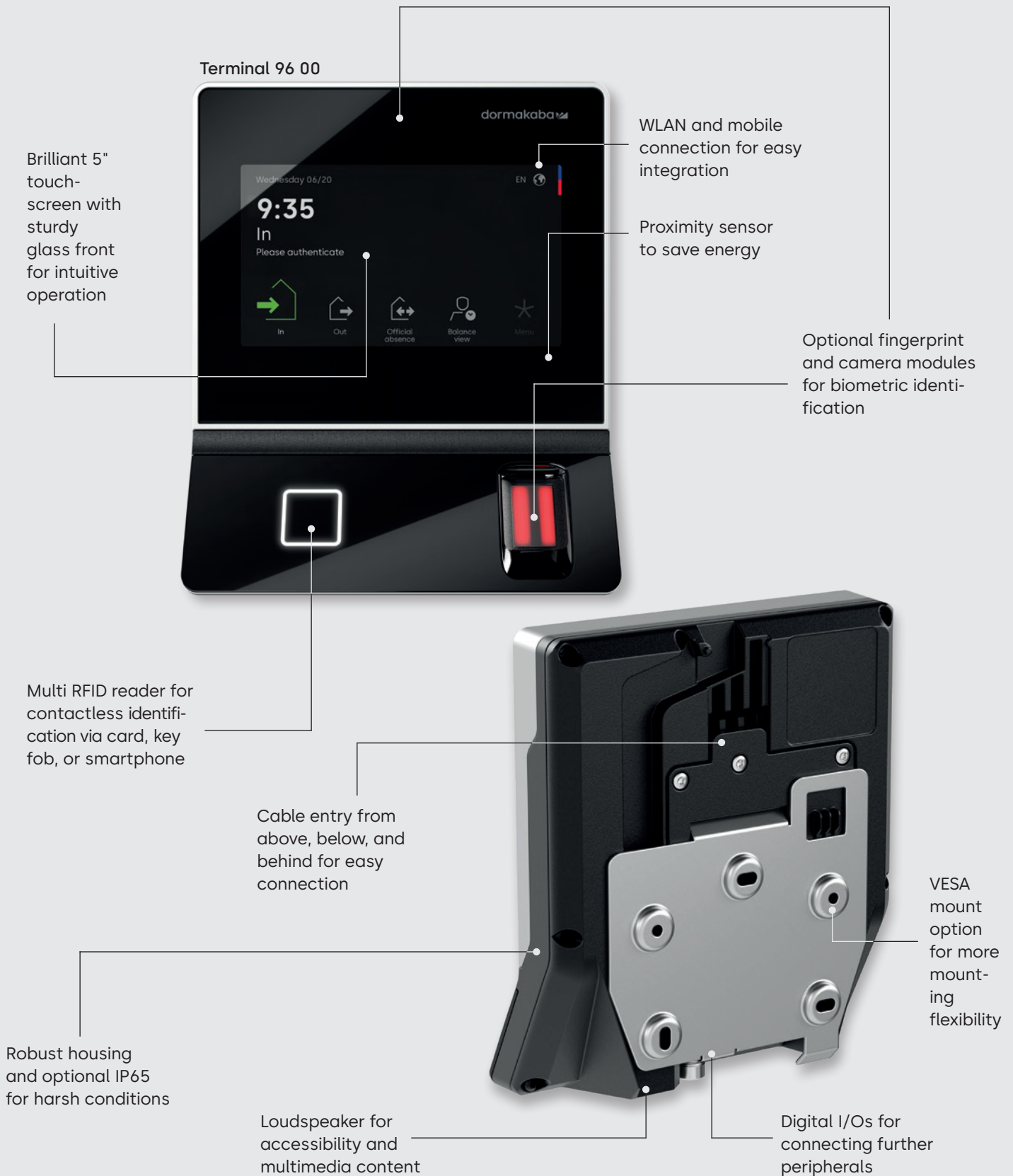


Terminal 98 00

### Information source for your employees

Terminal 98 00 with its large display can show both large selection lists and extensive information content, such as a bulletin board, timetables, etc. There is a split screen for this purpose.

# Time for a closer look at the terminals

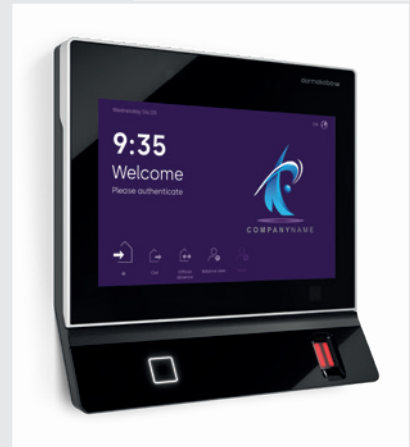


Terminal 98 00



Large 10.1" touch-screen for displaying extensive information content

Microphone for acoustic commands



## Our Sustainability Commitment

We are committed to foster a sustainable development along our entire value chain in line with our economic, environmental and social responsibilities toward current and future generations. Sustainability at product level is an important, future-oriented approach in the field of construction. In order to give quantified disclosures of a product's environmental impact through its entire life cycle, dormakaba provides Environmental Product Declarations (EPD), based on holistic life cycle assessments.

[www.dormakaba.com/sustainability](http://www.dormakaba.com/sustainability)



## Our offering

### Access Automation Solutions

Entrance Automation  
Entrance Security



### Access Control Solutions

Electronic Access & Data  
Escape and Rescue Systems  
Lodging Systems



### Access Hardware Solutions

Door Closers  
Architectural Hardware  
Mechanical Key Systems



### Services

Technical Support  
Installation and commissioning  
Maintenance and Repair



WN 5604351532, EN, 06/2024  
Subject to technical modifications.



[dormakaba.com](http://dormakaba.com)

**dormakaba**  
**International Holding AG**  
Hofwisenstrasse 24  
CH-8153 Rümlang  
T +41 44 818 90 11  
[info@dormakaba.com](mailto:info@dormakaba.com)  
**dormakaba.com**