



## **dormakaba** **Terminal 96 00**

Time recording and  
access control in  
compact design



# The perfect entry solution – simply beautiful and beautifully simple

Secure and uncomplicated attendance recording, door control as well as a contemporary staff communication – this is what the dormakaba terminal 96 00 stands for. The expandable all-rounder is presented in a pleasant, compact format, and it distinguishes itself by high stability.

The user interface offers extensive configuration options to be adapted to your corporate identity featuring company-specific content and applications.

Additional options like CardLink extend the scope of functions, making it demand-oriented and custom-fit. And the best part: Thanks to 1-click installation and Power over Ethernet (PoE), the terminal 96 00 is installed in a few simple steps – and immediately ready to use.

Thanks to the optional class of protection IP65, the terminal, with its robust housing and the impact-resistant glass screen, is extra dust- and water-proof – and thus highly durable even in outdoor installation.

# High-tech compact packing – features & benefits at a glance

**Bright 4" touchscreen**

for intuitive operation

**Multi RFID reader**

for contactless identification with LEGIC or MIFARE media

**Optional multi RFID reader with BLE**

for comfortable booking with a smartphone

**Optional class of protection IP65**

for reliable protection from dust and water

**Stable housing and robust glass screen**

for durability

**Freely configurable user interface**

for individual icons and content

**Integration of apps**

for company-specific requirements

**Door control**

for simple access control



**WiFi and mobile communication connection**

for wireless data transfer

---

**1-click installation**

for quick and easy commissioning

---

**Modern design**

for a representative corporate image

---

**CardLink function**

for easy integration of offline door components

---

**Power over Ethernet (PoE)**

for an uncomplicated power supply and network integration

---

**Compatible with previous versions**

for a problem-free upgrade

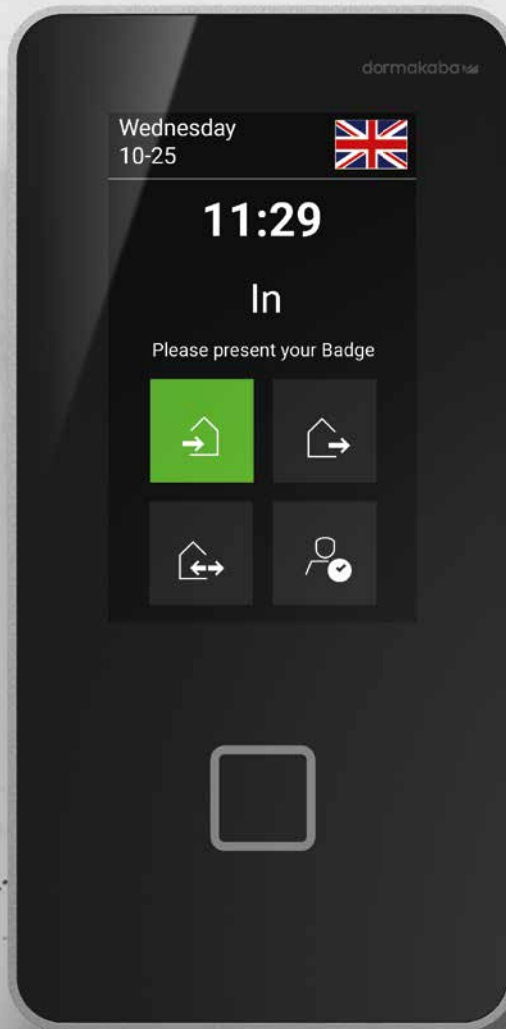
---

**Integrated loudspeaker**

for clear audio output as acoustic signal or language

---

with freely  
configurable user  
interface



01

01

New standard interface  
(ex works)

02

Interface with  
white background

03

Interface with  
company-specific  
background image

04

Freely configured  
interface in  
corporate identity

05

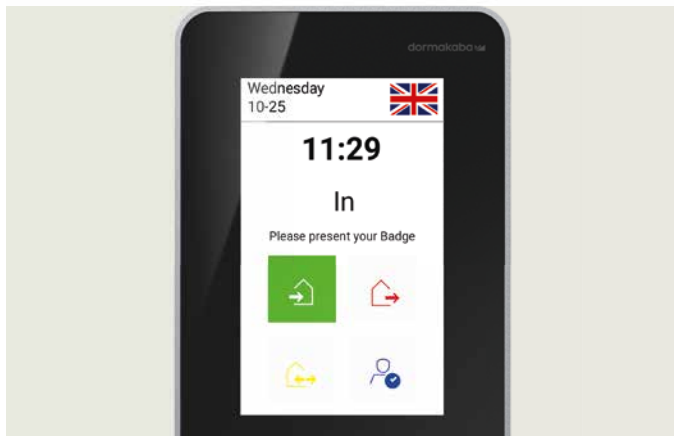
Freely configured  
interface in  
corporate identity

# Maximum design freedom – your chosen look and acoustics

The terminal 96 00 makes a statement with its looks and beyond. Even the user interface is convincing with attractive, modern design. Would you rather like to choose the look and acoustics yourself? No problem. The user interface is freely configurable, and with a few simple steps, it appears as individual as your company.

Say goodbye to pre-set display layouts: Be it your own colours, background images, logo, symbols, apps or multimedia content – you decide how your terminal should look.

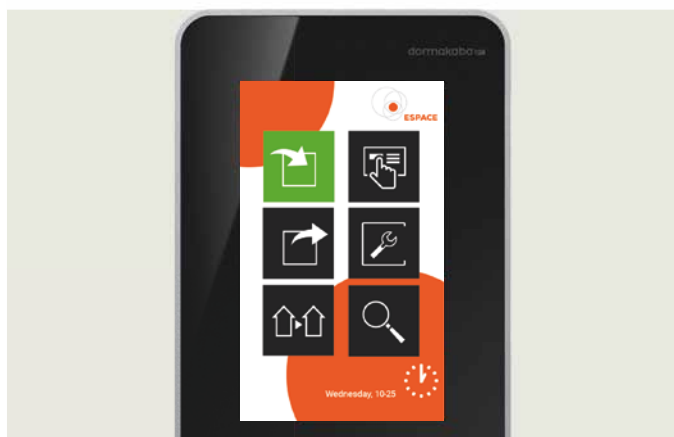
With the text-to-speech function, the function key texts are spoken out loud. This helps visually impaired people with a secure and error-free operation of the terminal.



02



03



04



05

# Ready to go in no time – thanks to easy installation and integration

## Simply kick off:

- Network integration via Ethernet port
- Power supply with Power over Ethernet (PoE)
- Supports common RFID media
- Compatible with previous terminal series

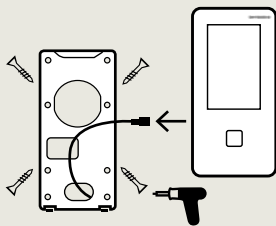




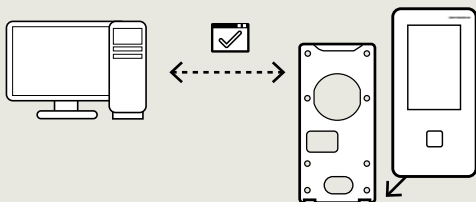
# Quick and easy commissioning

## Fast, easy and secure mounting:

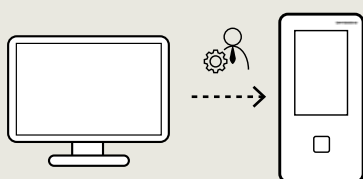
1. Secure wall mounting plate



2. Attach and secure terminal for automatic network login (DHCP)



3. User-friendly configuration





## Smartphone instead of ID card

Simply book with smartphone: the optional function for Mobile Access makes it possible. Recording working hours and opening doors with a smartphone\* – that is popular with most of the staff. The ID card is sometimes forgotten, but your staff always has their smartphone with them. Therefore, using the smartphone as registration medium at the terminal – or as a complete registration station for attendance recording – reduces the correction bookings piling up in HR and thus reduces your effort for managing and issuing ID cards. And smartphones being very personal objects, they are not handed over to other colleagues for use.

\* Scope of functions depends on the dormakaba system solutions used

# All option packages at a glance

9600-K6	Option package 96 20	Option package 96 40	Option package 96 60
<b>Device software</b>			
B-client HR20	●	●	●
<b>Reader</b>			
Multi RFID reader (LEGIC/MIFARE) with BLE	●	●	●
HID iClass SE proximity reader	○	○	○
<b>Host interface</b>			
10/100/1000 Ethernet Interface (IPv4, IPv6)	●	●	●
WLAN	○	○	○
<b>Power supply</b>			
Power over Ethernet	●	●	●
<b>Options</b>			
Door control	○	○	●
Data encryption	●	●	●
CardLink / AoC / DoC	○	●	●
Mobile Access – booking with a smartphone	○	●	●
<b>Storage options</b>			
200 persons	●	–	–
1,000 persons	○	●	–
2,000 persons	○	○	●
10,000 persons	○	○	○
10,000+ persons	○	○	○
<b>Design</b>			
Increased protection class IP65	○	○	–
Surface-mounted cable feed	○	○	–
Add-on I/Os (surface-mounted)	○	○	●
Remote I/Os (flush-mounted)	○	○	○

Standard ●  
Option ○  
Not possible –

Note: The scope of effectively available product functions depends on the context in which the system is used.



**Door  
Hardware**



**Electronic  
Access & Data**



**Mechanical  
Key Systems**



**Lodging Systems**



**Entrance  
Systems**



**Interior Glass  
Systems**



**Safe Locks**



**Service**

**dormakaba**  
**International Holding AG**  
Hofwisenstrasse 24  
CH-8153 Rümlang  
T +41 44 818 90 11  
info@dormakaba.com  
www.dormakaba.com