

C200

Cylindrical locksets

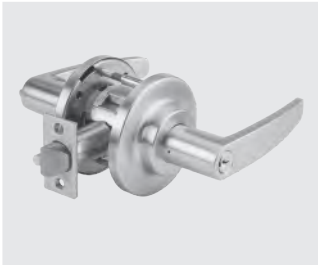
C200 lever locks shown with E Rose



C200LCE



C200LRE



C700LGE

Functions

ANSI	dormakaba	Description
—	C201	Dummy Trim
F75	C210	Passage
F111	C225	Communicating Passage
F77A	C230	Patio
F76A	C240	Privacy
F82A	C250	Entry/Office
F109	C253	Entry
F84	C270	Classroom
F86	C280	Storeroom

Applications

C200 Series heavy-duty Grade 2 cylindrical locks are especially suited for health care, commercial, and industrial applications. A full range of functions and designs are available to fulfill all cylindrical lock Grade 2 applications.

Certification/Compliance

- Certified to meet ANSI/BHMA A156.2 Series 4000 Grade 2 requirements.
- U.L. and C.U.L. listed for 3-hour applications for UL10B and UL10C.
- CSFM approved, California State Reference code, 1989 (formerly Title 19).
- C200 Series lever locks meet ANSI 117.1 and ADA requirements for barrier-free accessibility.

Warranty

For details refer to Warranty Statement.

Exposed trim

Brass or stainless steel—levers are pressure cast zinc, plated to match finish symbols.

Finishes

- Brass—605 (Bright) and 606 (Satin)
- Bronze—612 (Satin) and 613 (Dark Oxidized Satin)
- Chrome—625 (Bright) or 626 (Satin)

Door ranges

Lever designs fit 1-3/8" - 2" (35mm - 51mm)

Backset

- 2-3/4" (70 mm) standard for lever applications.
- 3-3/4" (95 mm) and 5" (127 mm) available.

Keying

6-pin brass cylinders provided with two nickel silver keys. Keying options available from factory include master keying, grandmaster keying, and construction keying. 6-pin and 7-pin Small Format Interchangeable Core cylinders available.

Features

- All C200 Series Locksets are through-bolted and have auxiliary springs to provide long cycle life and resistance to lever droop.
- Non-handed chassis.



dormakaba USA quality and environmental management systems in Indianapolis, are certified to ISO 9001:2008 and ISO 14001:2004.