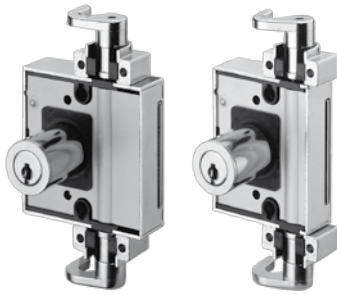


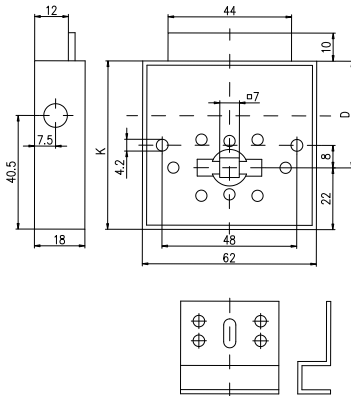
# Espagnolette Lock (Terza)

## MES.3016, MES.3017



Type 3016

Type 3017



K = case dimension in mm  
D = backset in mm

Type	K - Case width	D - Backset
3016	60mm	38mm
3017	50mm	28mm

### Application:

For revolving doors of all types, with 7 mm square hub.  
For cylinder olives or blind olives with 7 mm square rod or for cylinder type 1057  
Key can only be removed when closed.

### Specification:

Housing supplied in solid natural brass with nickel plating  
Reversible key made from nickel silver  
Lock cylinder type 1057 brass, nickel-plated (see page K.110),  
Zinc die-cast catch hooks, nickel-plated  
Nickel-plated steel case and mortise plate  
Nickel-plated brass connecting screws

### Included with the cylinder:

2 reversible keys (See "Special Functions and Keys" for key options)  
Plastic key clip in dark red for Kaba penta, in dark blue for all other systems  
2 catch hooks and 2 lock pins  
1 mortise plate  
2 driving rods 8 mm x 2000mm type 3070 steel  
2 wood screws M3x29 (for the case)  
6 wood screws M3x18 (for catch hooks, mortise plate)  
1 fixing plate 3813  
Security Card for ownership registration and ordering duplicate keys  
Installation and Maintenance Instructions

<b>Premier Systems:</b> 6	Kaba penta	7	Kaba quattro pluS	12	Kaba gemini pluS
Patent expired systems		4	Kaba quattro S	2	Kaba gemini S
Old systems		3	Kaba quattro <sup>1)</sup>	1	Kaba gemini <sup>1)</sup>
Dealer systems		5	Kaba experT <sup>2)</sup>	19	Kaba maTriX <sup>2)</sup>
Old dealer system				9	Kaba gemini T <sup>2)</sup>

**Cylinder length** Standard - 25, 30 and 45mm

**Options** (See „Special Functions and Keys“ for details and further options)

BAZ	Construction key	BAZ3	Construction key 3	RE	Right hinged door
LI	Left hinged door	SYS.3016.	Without cylinder	SYS.3017.	Without cylinder

DREHSTANGE.8.2000	8mm driving rod 2000mm long (included in standard supply)
DREHSTANGE.8.2500	8mm driving rod 2500mm long
DREHSTANGE.8.3000	8mm driving rod 3000mm long

### Accessories

ROSETTE.1008A.*	Slide on rosette furniture cylinder Ø 22 mm, available in all surface finishes (* specify surface finish code at the end of the order code)
-----------------	---

### Standard Surface Finishes (for lock cylinder)

NI - Nickel plated	MS - Brass natural	
--------------------	--------------------	--

### Optional Surface Finishes

BH - brown light	MP - Brass polished	CR - Chrome standard
BM - brown medium	MSA - Brass antique	CRM - Chrom dull
BD - brown dark		CRP - Chrome polished
NIC - chemically nickel plated		
GO - gold plated		

### Order Code System

System Code.Lock.Type.Cylinder length.Surface finish.Hinge side.Option

Example:

6.MES.3016.25.NI.RE = penta.furniture lock.3016.cylinder length 25mm.nickel plated.right hinged door

**Please note that certain options, finishes and dimensions may be subject to extended factory lead times. Please contact our office via email on [sales.uk@kaba.com](mailto:sales.uk@kaba.com) or telephone (0) 870 000 5625.**

<sup>1)</sup> Kaba gemini and Kaba quattro are only offered for existing master key systems.

<sup>2)</sup> Kaba experT, Kaba maTriX and Kaba gemini T are only sold to authorized dealers.