

BTS

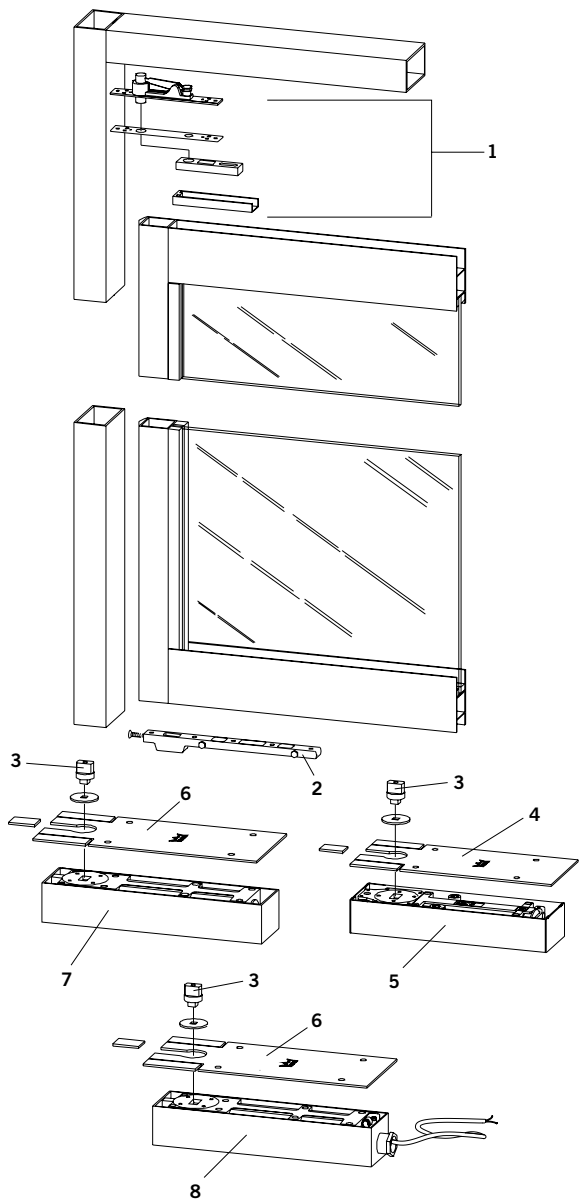
Applications and accessories

We make access in life smart and secure



Aluminum door and frame

Center hung – Double or single acting



BTS 75V Packages

Components	BTS 75V/A Center hung, double-acting	BTS 75V/G Center hung, single-acting
1. Top pivot	8062	8062
2. Bottom arm	7422	7422
3. Spindle	74010	80010
4. Cover plate	7510	7510
5. Closer and cement case	BTS 75V	BTS 75V

BTS 80 Packages

Components	BTS 80/A Center hung, double-acting	BTS 80/G Center hung, single-acting
1. Top pivot	8062	8062
2. Bottom arm	7422	7422
3. Spindle	74010	80010
6. Cover plate	7410	7410
7. Closer and cement case	BTS 80	BTS 80

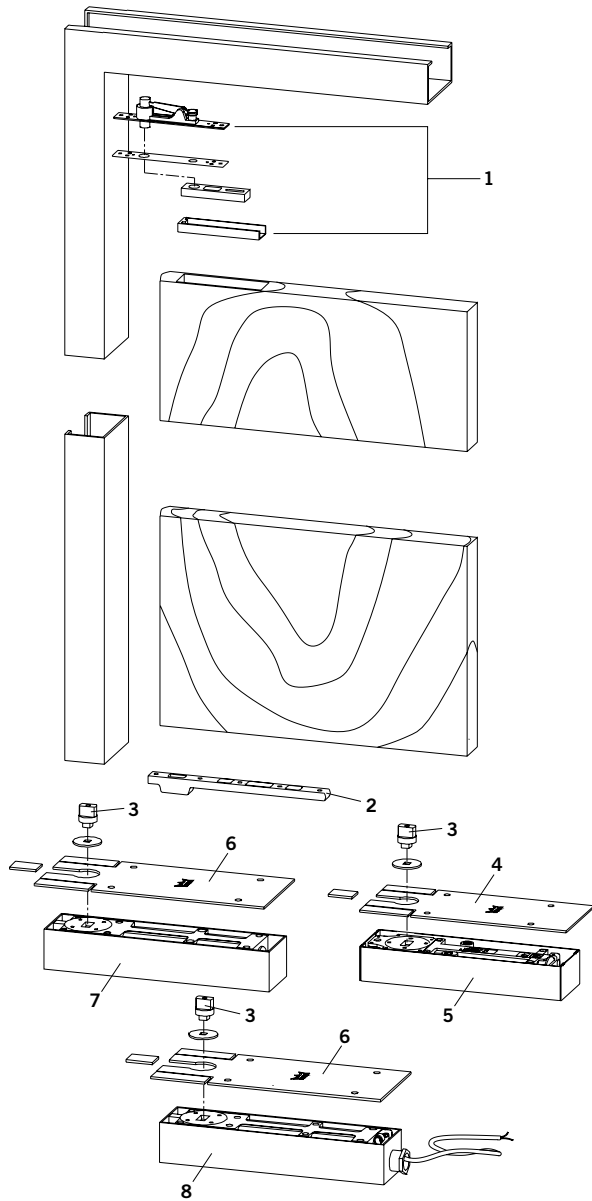
BTS 80 EMB Package

Components	BTS 80 EMB/G Center hung, single-acting
1. Top pivot	8062
2. Bottom arm	7422
3. Spindle	80010
6. Cover plate	7410
8. Closer and cement case	BTS 80 EMB

Specify hand for G packages.

Wood or steel door and frame

Center hung – Double or single acting



BTS 75V Packages

Components	BTS 75V/B Center hung, double-acting	BTS 75V/H Center hung, single-acting
1. Top pivot	8062	8062
2. Bottom arm	7421	7421
3. Spindle	74010	80010
4. Cover plate	7510	7510
5. Closer and cement case	BTS 75V	BTS 75V

BTS 80 Packages

Components	BTS 80/B Center hung, double-acting	BTS 80/H Center hung, single-acting
1. Top pivot	8062	8062
2. Bottom arm	7421	7421
3. Spindle	74010	80010
6. Cover plate	7410	7410
7. Closer and cement case	BTS 80	BTS 80

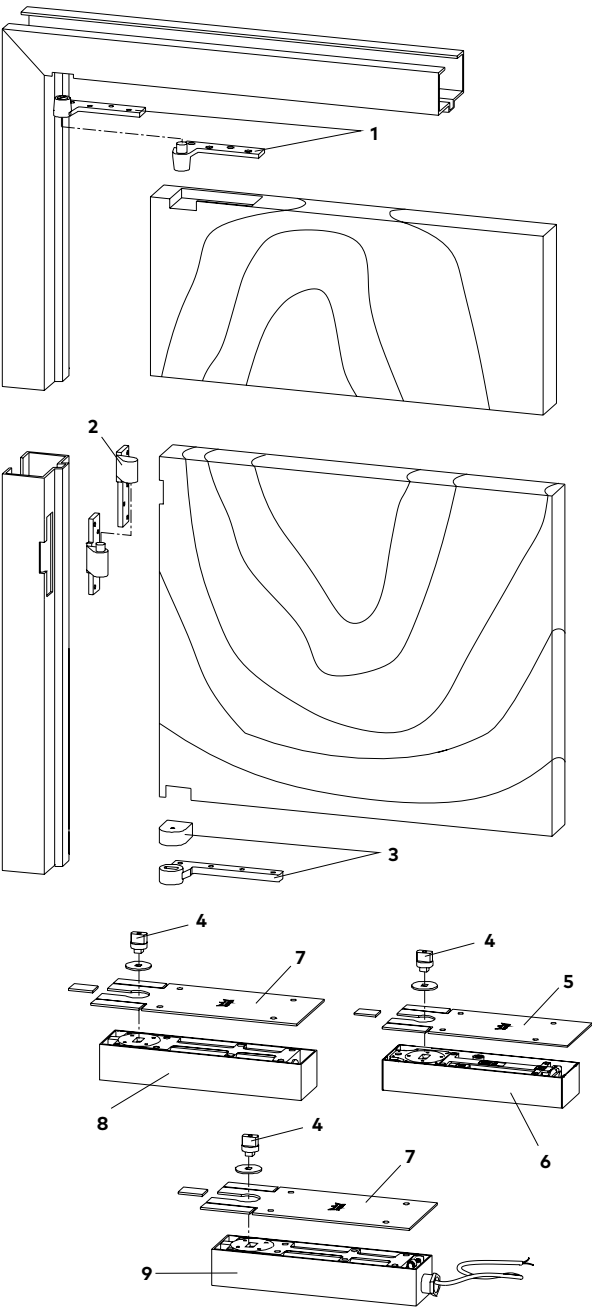
BTS 80 EMB Package

Components	BTS 80 EMB/H Center hung, single-acting
1. Top pivot	8062
2. Bottom arm	7421
3. Spindle	80010
6. Cover plate	7410
8. Closer and cement case	BTS 80 EMB

Specify hand for H packages.

3/4" Offset hung

Single acting



NFPA 80 requires that labeled fire doors up to 60" in height be provided with 2 pivots and an additional pivot for each 30" of door height or fraction thereof. The same recommendation applies to non-labeled doors. Distance between pivots may exceed 30" on non-labeled doors.

BTS 75V Packages

Components	BTS 75V/D 3/4" Offset, standard	BTS 75V/E 3/4" Offset, 20-min rated	BTS 75V/F 3/4" Offset, up to 3-hr rated
1. Top pivot	75120	75122	75133
2. Intermediate pivot	75220 (optional)	75222 (required)	75233 (required)
3. Bottom arm	75323	75323	75323
4. Spindle	74010	74010	74010
5. Cover plate	7510	7510	7510
6. Closer and cement case	BTS 75V	BTS 75V NHO	BTS 75V NHO

BTS 80 Packages

Components	BTS 80/D 3/4" Offset, standard	BTS 80/E 3/4" Offset, 20-min rated	BTS 80/F 3/4" Offset, up to 3-hr rated
1. Top pivot	75120	75122	75133
2. Intermediate pivot	75220 (optional)	75222 (required)	75233 (required)
3. Bottom arm	75323	75323	75323
4. Spindle	74010	74010	74010
7. Cover plate	7410	7410	7410
8. Closer and cement case	BTS 80	BTS 80F NHO	BTS 80F NHO

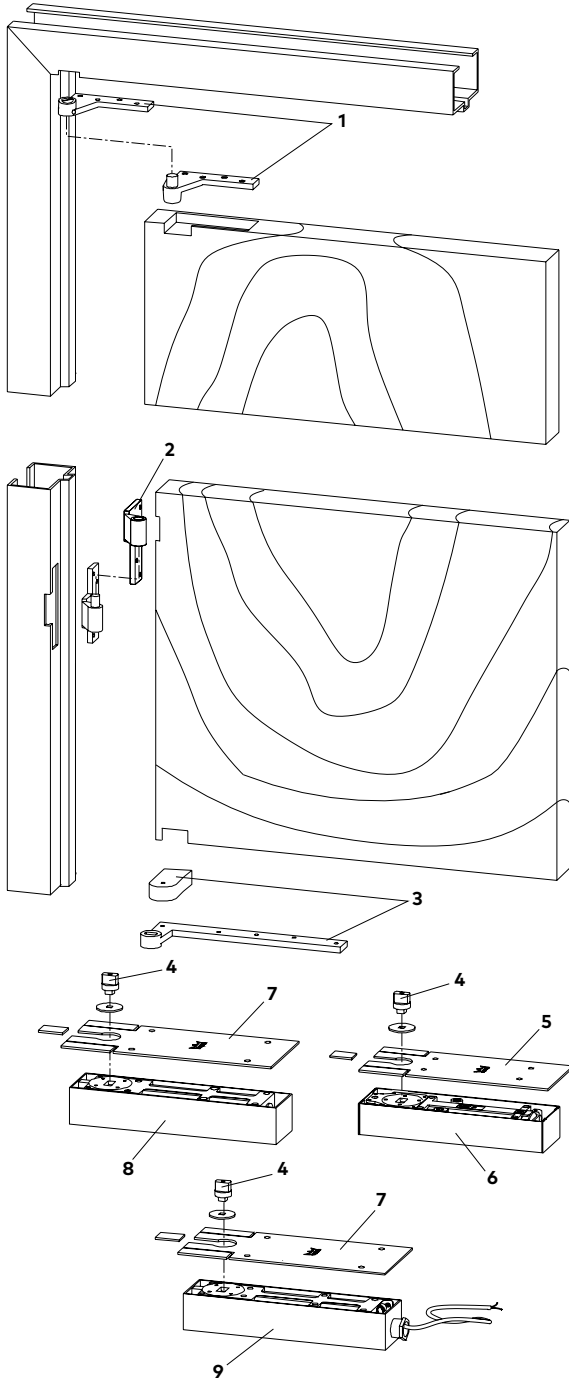
BTS 80 EMB Packages

Components	BTS 80 EMB/D 3/4" Offset, standard	BTS 80 EMB/E 3/4" Offset, 20- min rated	BTS 80 EMB/F 3/4" Offset, up to 3-hr rated
1. Top pivot	75120	75122	75133
2. Intermediate pivot	75220 (optional)	75222 (required)	75233 (required)
3. Bottom arm	75323	75323	75323
4. Spindle	74010	74010	74010
7. Cover plate	7410	7410	7410
9. Closer and cement case	BTS 80 EMB	BTS 80 EMB	BTS 80 EMB

Specify hand for D, E, and F packages.

1-1/2" Offset hung

Single acting



It is recommended that doors up to 60" in height be provided with two pivots and an additional pivot for each 30" of door height or fraction thereof. Distance between pivots may exceed 30" on non-labeled doors.

BTS 75V Packages

Components	BTS 75V/C 1-1/2" Offset, standard	BTS 75V/CE 1-1/2" Offset, 20-min rated	BTS 75V/CF 1-1/2" Offset, Up to 3-hr rated
1. Top pivot	15120	15122	15133
2. Intermediate pivot	15220 (optional)	15222 (required)	15233 (required)
3. Bottom arm	15323	15323	15323
4. Spindle	74010	74010	74010
5. Cover plate	7510	7510	7510
6. Closer and cement case	BTS 75V	BTS 75V NHO	BTS 75V NHO

BTS 80 Packages

Components	BTS 80/C 1-1/2" Offset, standard	BTS 80/CE 1-1/2" Offset, 20-min rated	BTS 80/CF 1-1/2" Offset, up to 3-hr rated
1. Top pivot	15120	15122	15133
2. Intermediate pivot	15220 (optional)	15222 (required)	15233 (required)
3. Bottom arm	15323	15323	15323
4. Spindle	74010	74010	74010
7. Cover plate	7410	7410	7410
8. Closer and cement case	BTS 80	BTS 80F NHO	BTS 80F NHO

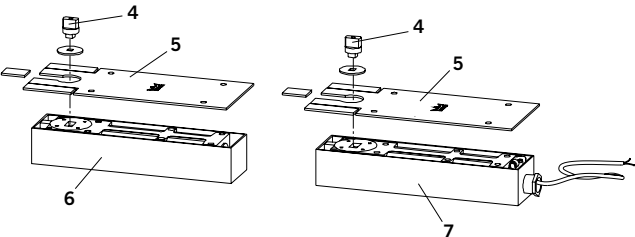
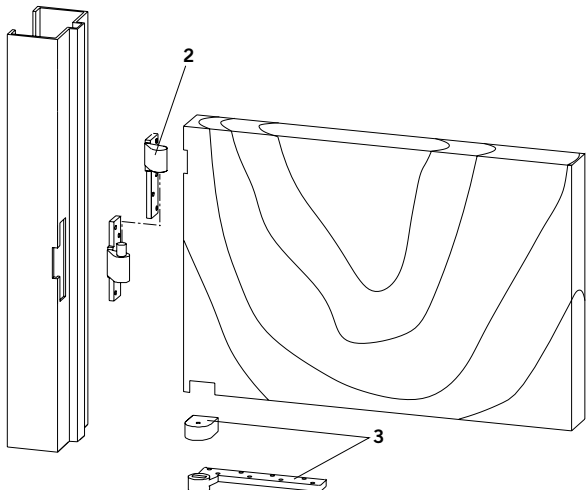
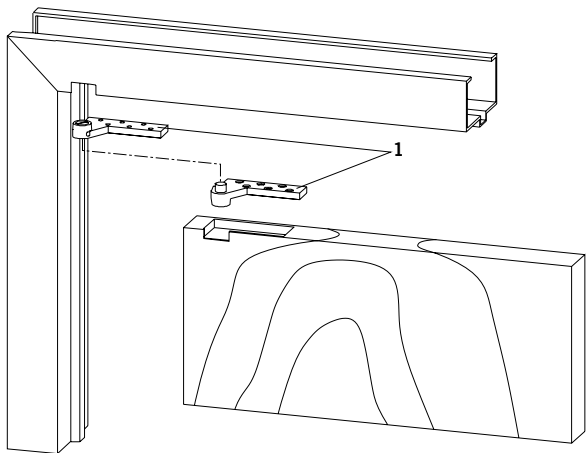
BTS 80 EMB Packages

Components	BTS 80 EMB/C 1-1/2" Offset, standard	BTS 80 EMB/CE 1-1/2" Offset, 20-min rated	BTS 80 EMB/CF 1-1/2" Offset, up to 3-hr rated
1. Top pivot	15120	15122	15133
2. Intermediate pivot	15220 (optional)	15222 (required)	15233 (required)
3. Bottom arm	15323	15323	15323
4. Spindle	74010	74010	74010
7. Cover plate	7410	7410	7410
9. Closer and cement case	BTS 80 EMB	BTS 80 EMB	BTS 80 EMB

Specify hand for C, CE, and CF packages.

Lead-Lined door

3/4" Offset hung – Single acting



BTS 80 Packages

Components	BTS 80/L 3/4" Offset, lead-lined, standard	BTS 80/LE 3/4" Offset, lead-lined, 20-min rated	BTS 80/LF 3/4" Offset, lead-lined, up to 3-hr rated
1. Top pivot	75140	75142	75143
2. Intermediatepivot	75240 (optional)	75242 (required)	75243 (required)
3. Bottom arm	75343	75343	75343
4. Spindle	74010	74010	74010
5. Cover plate	7410	7410	7410
6. Closer and cement case	BTS 80	BTS 80F NHO	BTS 80F NHO

BTS 80 EMB Packages

Components	BTS 80 EMB/L 3/4" Offset, lead-lined, standard	BTS 80 EMB/LE 3/4" Offset, lead-lined, 20-min rated	BTS 80 EMB/LF 3/4" Offset, lead-lined, up to 3-hr rated
1. Top pivot	75140	75142	75143
2. Intermediate pivot	75240 (optional)	75242 (required)	75243 (required)
3. Bottom arm	75343	75343	75343
4. Spindle	74010	74010	74010
5. Cover plate	7410	7410	7410
7. Closer and cement case	BTS 80 EMB	BTS 80 EMB	BTS 80 EMB

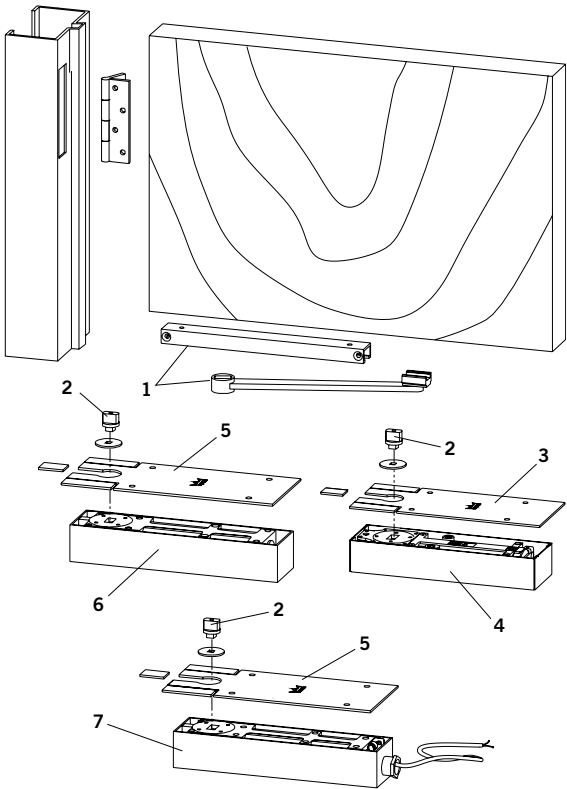
Specify hand for L, LE, and LF packages.

It is recommended that doors up to 60" in height shall be provided with two pivots and an additional pivot for each 30" of door height or fraction thereof. Distance between pivots may exceed 30" on non-labeled doors.

Independently hung doors

Hinges

Packages have been developed for use with 4-1/2" wide butt hinges. Applications using alternate hanging means should be submitted to dormakaba's Technical Services Department for review and recommendation.



- I packages mortise the track in the bottom of the door.
- I packages can be installed on the push or pull side of an opening.
- IF packages surface apply the track to the face of the door.

BTS 75V Packages

Components	BTS 75V/I Standard	BTS 75V/IF 3-Hr rated steel, 1-1/2-hr rated wood
1. Slide arm assembly	7451N	7451N
2. Spindle	74003	74003
3. Cover plate	7510	7510
4. Closer and cement case	BTS 75V	BTS 75V NHO

BTS 80 Packages

Components	BTS 80/I Standard	BTS 80/IF 3-Hr rated steel, 1-1/2-hr rated wood
1. Slide arm assembly	7451N	7451N
2. Spindle	74003	74003
5. Cover plate	7410	7410
6. Closer and cement case	BTS 80	BTS 80F NHO

BTS 80 EMB Packages

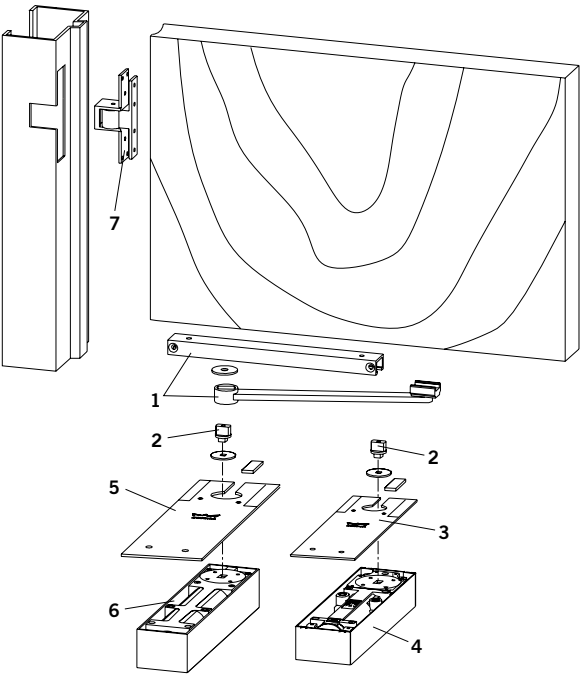
Components	BTS 80 EMB/I Standard	BTS 80 EMB/IF 3-hr rated steel, 1-1/2-hr rated wood
1. Slide arm assembly	7451N	7451N
2. Spindle	74003	74003
5. Cover plate	7410	7410
7. Closer and cement case	BTS 80 EMB	BTS 80 EMB

Specify hand for EMB/I and EMB/IF packages.

Independently hung doors

Pocket pivots

Packages have been developed for use with pocket pivots. Applications using alternate hanging means should be submitted to DORMA's Technical Services Department for review and recommendation.



- P packages mortise the track in the bottom of the door.
- PF packages surface apply the track to the face of the door.
- P and PF packages have three pocket pivots for doors up to 7'-6" tall. Taller doors should use an additional pivot for every 30" of door height or fraction thereof.

BTS 75V Packages

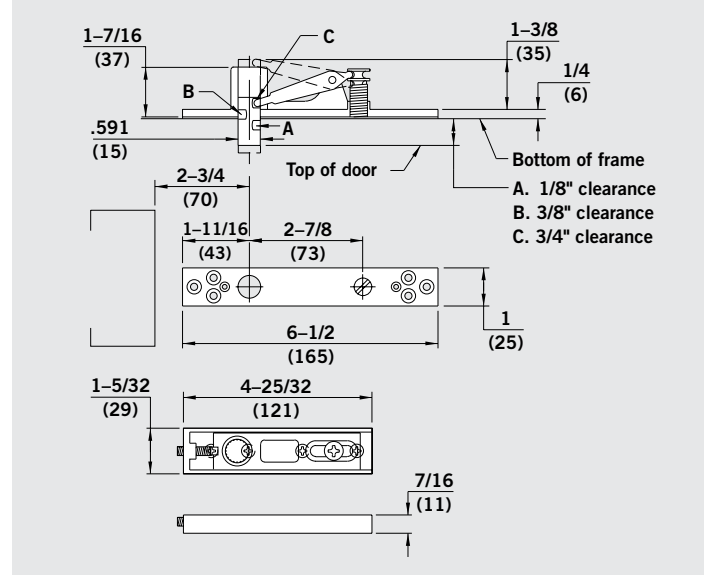
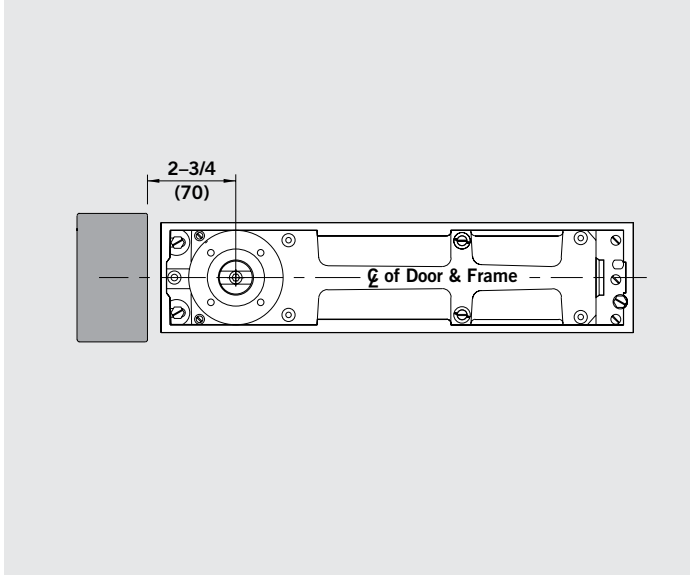
Components	BTS 75V/P Standard	BTS 75V/PF 3-hr rated steel, 20-min rated wood
1. Slide arm assembly	7451N	7451N
2. Spindle	74003	74003
3. Cover plate	7510	7510
4. Closer and cement case	BTS 75V	BTS 75V NHO
7. Pocket pivot	75520	75523

BTS 80 Packages

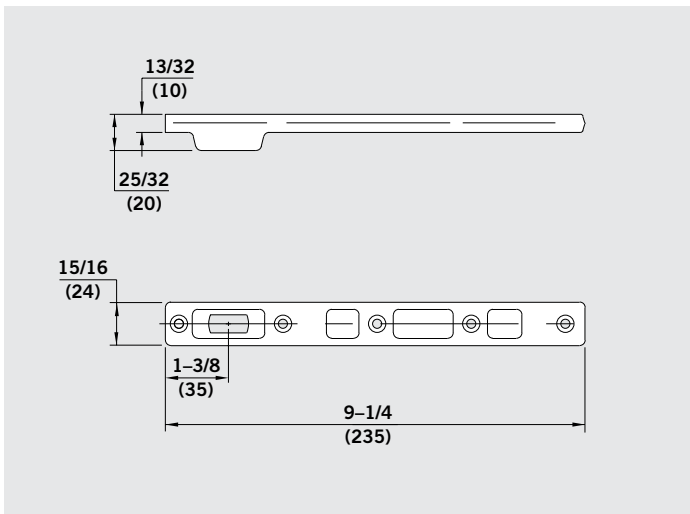
Components	BTS 80/P Standard	BTS 80/PF 3-hr rated steel, 20-min rated wood
1. Slide arm assembly	7451N	7451N
2. Spindle	74003	74003
5. Cover plate	7410	7410
6. Closer and cement case	BTS 80	BTS 80F NHO
7. Pocket pivot	75520	75523

Specify hand for P and PF packages.

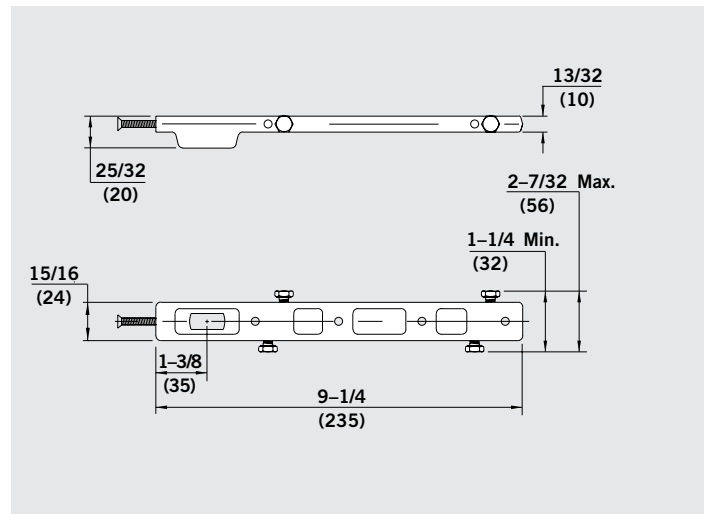
Accessories for center hung installations



No. 8062 — Walking beam top pivot with cover plate. Adjustable to obtain top door clearances of 1/8", 3/8" or 3/4". Optional extended pin available for clearances of 3/4", 1" or 1-5/16".

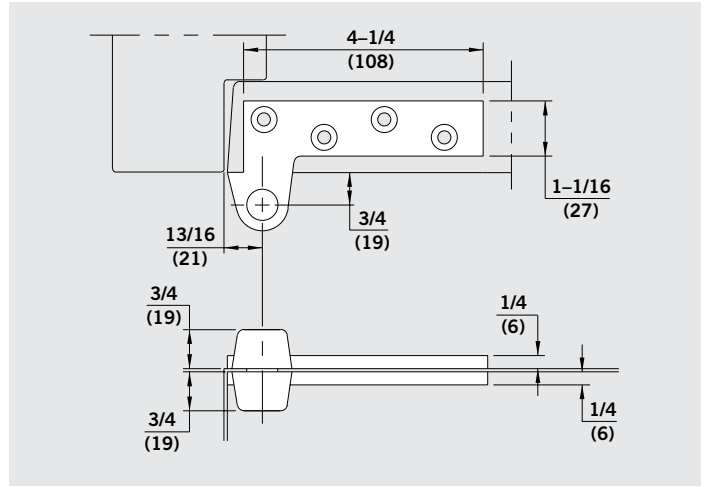
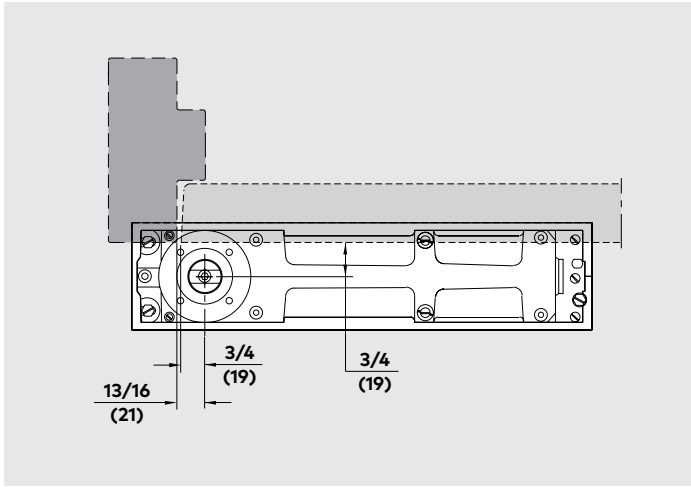


No. 7421 — Center hung bottom arm for steel or wood doors.



No. 7422 — Center hung bottom arm for aluminum doors.

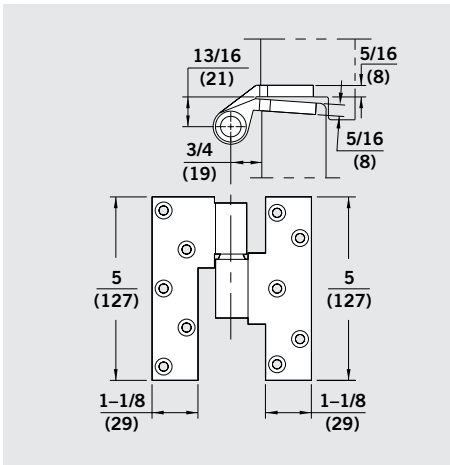
Accessories for 3/4" offset installations



No. 75120 — 3/4" offset brass top pivot.

No. 75122 — 3/4" offset brass top pivot. U.L. listed for 20-minute rated fire doors.

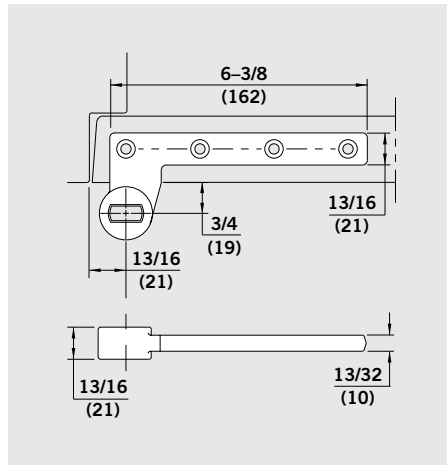
No. 75133 — 3/4" offset steel top pivot. For use on fire doors rated up to three hours.



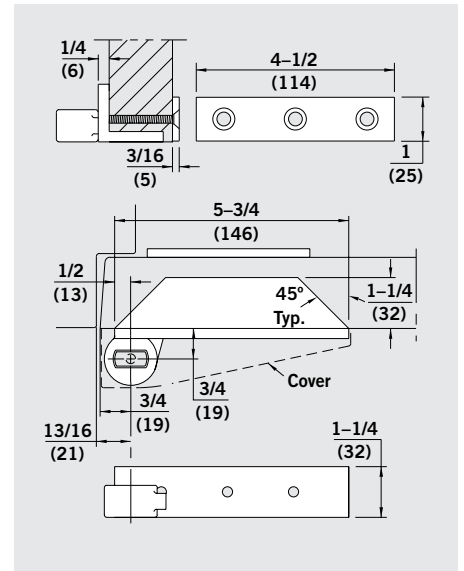
No. 75220 — 3/4" offset standard-duty brass intermediate pivot.

No. 75222 — 3/4" offset standard-duty brass intermediate pivot. U.L. listed for 20-minute rated fire doors.

No. 75233 — 3/4" offset heavy-duty steel intermediate pivot. For use on fire doors rated up to three hours.
(Specify hand)

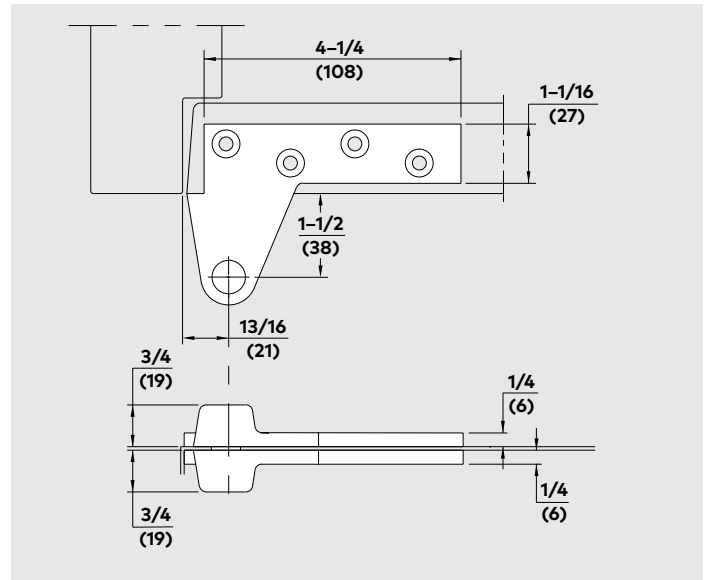
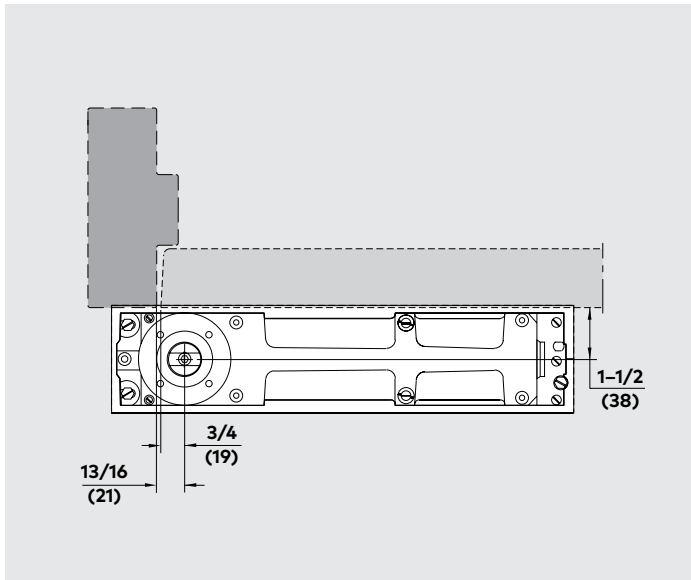


No. 75323 — 3/4" offset standard-duty steel bottom arm. Can also be used on fire doors rated up to three hours.
(Specify hand)

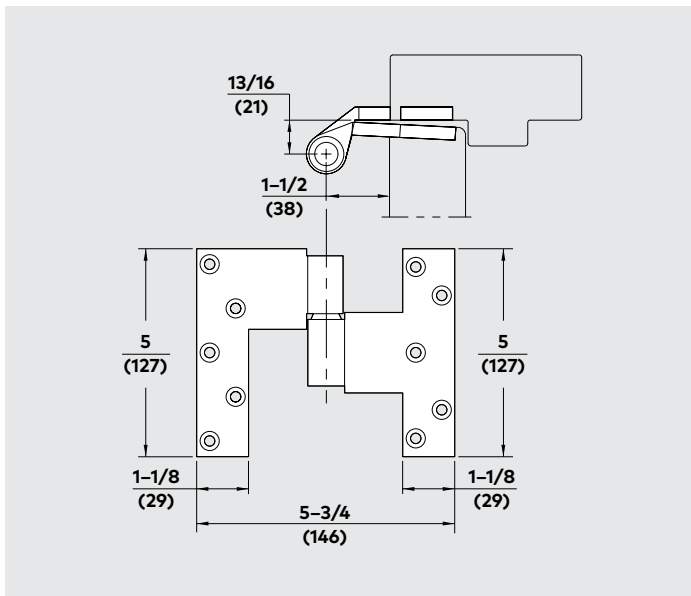


No. 75353 — 3/4" offset steel bottom arm. Closer is removable without removing door. Intermediate pivots are required when using this arm.
(Specify hand)

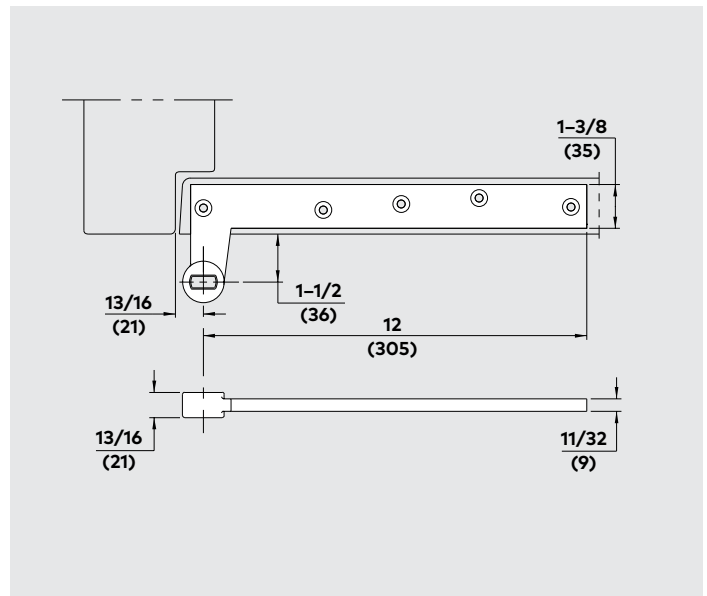
Accessories for 1-1/2" offset installations



No. 15120 — 1-1/2" offset brass top pivot.

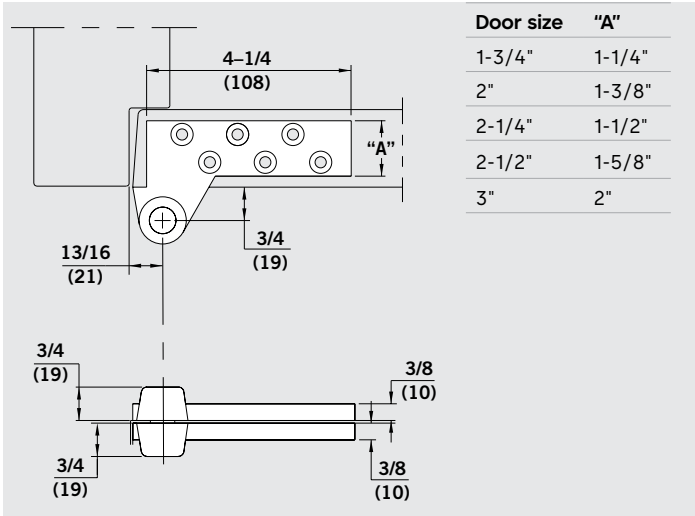
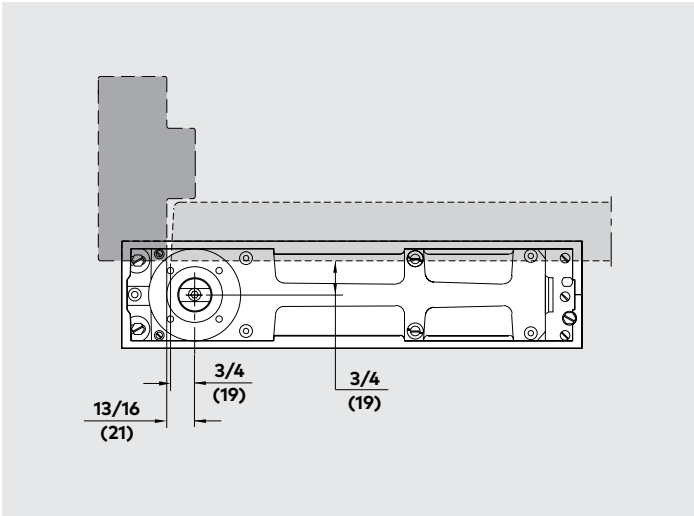


No. 15220 — 1-1/2" offset brass intermediate pivot.
(Specify hand)



No. 15323 — 1-1/2" offset steel bottom arm.
(Specify hand)

Accessories for 3/4" offset lead-lined installations



No. 75140 — 3/4" offset brass top pivot for lead-lined doors 1-3/4" thick.

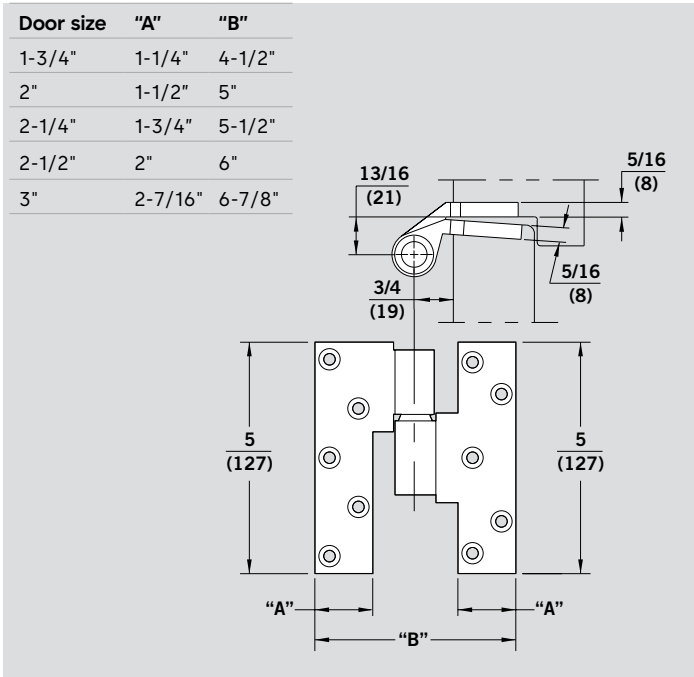
Note: For doors 2" to 3" thick specify as follows:

No. 75140-2 — For use on doors 2" thick.

No. 75140-2-1/4 — For use on doors 2-1/4" thick.

No. 75140-2-1/2 — For use on doors 2-1/2" thick.

No. 75140-3 — For use on doors 3" thick.



No. 75240 — 3/4" offset brass intermediate pivot for lead-lined doors 1-3/4" thick.

Note: For doors 2" to 3" thick specify as follows:

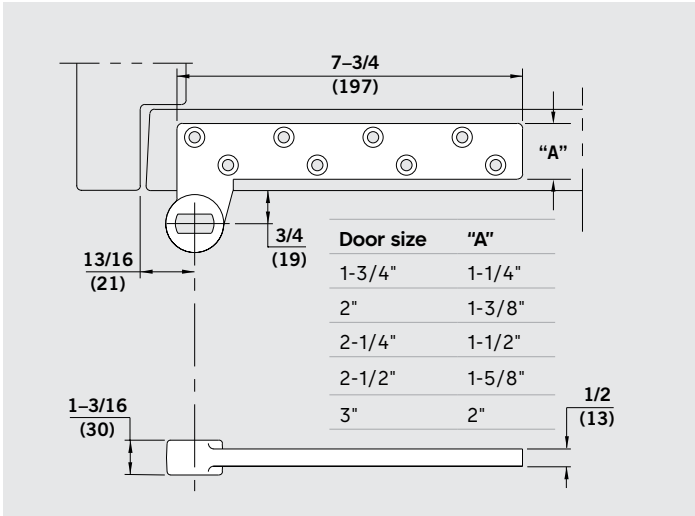
No. 75240-2 — For use on doors 2" thick.

No. 75240-2-1/4 — For use on doors 2-1/4" thick.

No. 75240-2-1/2 — For use on doors 2-1/2" thick.

No. 75240-3 — For use on doors 3" thick.

(Specify hand)



No. 75343 — 3/4" offset steel bottom arm for lead-lined 1-3/4" doors.

Note: For doors 2" to 3" thick specify as follows:

No. 75343-2 — For use on doors 2" thick.

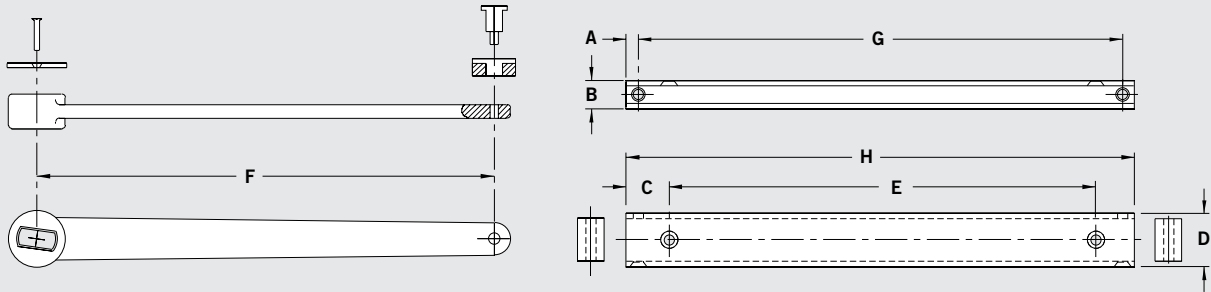
No. 75343-2-1/4 — For use on doors 2-1/4" thick.

No. 75343-2-1/2 — For use on doors 2-1/2" thick.

No. 75343-3 — For use on doors 3" thick.

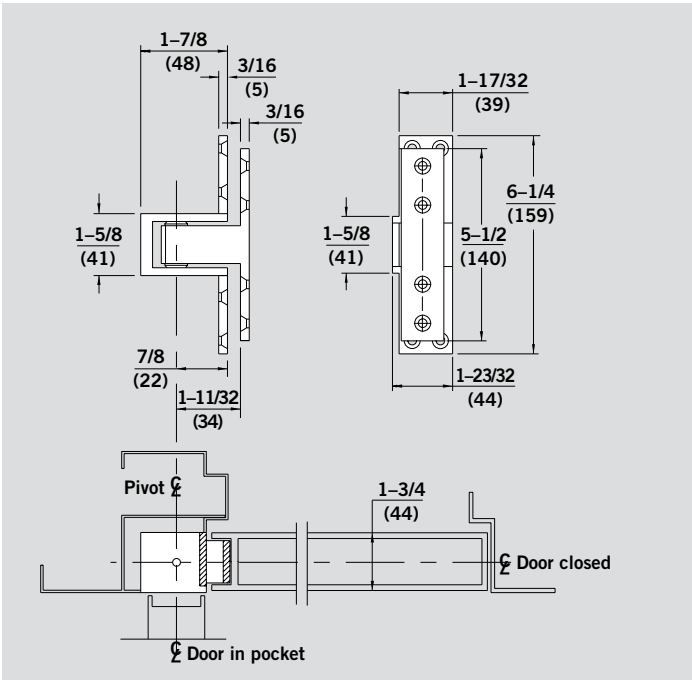
(Specify hand)

Accessories for independently hung installations



	A	B	C	D	E	F	G	H
Inches	9/32	25/32	1	1-1/4	9-29/32	10-5/8	11-1/4	11-13/16
Millimeters	7	20	25	32	250	270	286	300

No. 7451N Slide arm and channel — Drop forged steel with nylon slide block, cover washer, and anodized aluminum channel.



No. 75520 — Brass pocket pivot. For 90° pocket doors.

No. 75523 — Steel pocket pivot for 90° pocket doors.

U.L. listed for 20 minute wood doors and 3 hour rated steel fire doors.

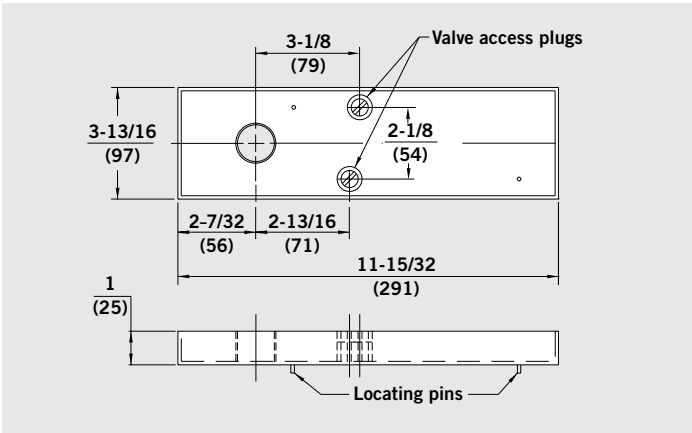
(Specify Hand)

Accessories

Terrazzo pan

BTS 75V Series

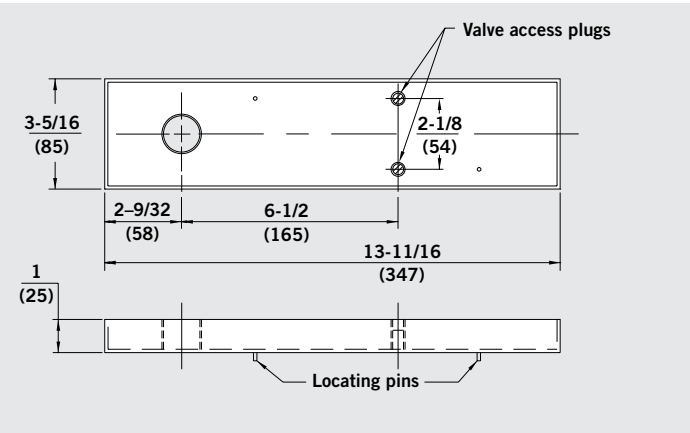
- TP 75V CH for center hung applications (shown).
- TP 75V RH or LH for 3/4" offset applications (specify hand).



Made from stainless steel and used in lieu of standard floor plate. Offers uninterrupted appearance with terrazzo or marble. Shims are included to allow easy removal of pan after initial installation.

BTS 80/BTS 80 EMB Series

- TP 80 CH for center hung applications (shown).
- TP 80 RH or LH for 3/4" offset applications (specify hand).

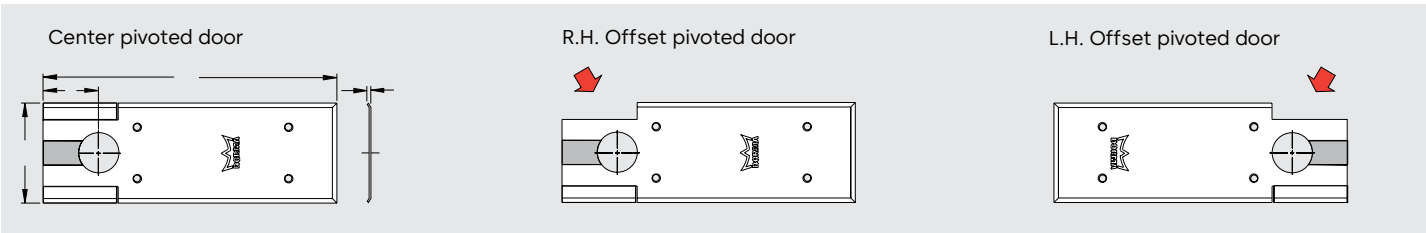


Note: When calculating the spindle size to be used with a terrazzo pan application, add 1" to the desired clearance between the door and the finished floor.

Cover plate

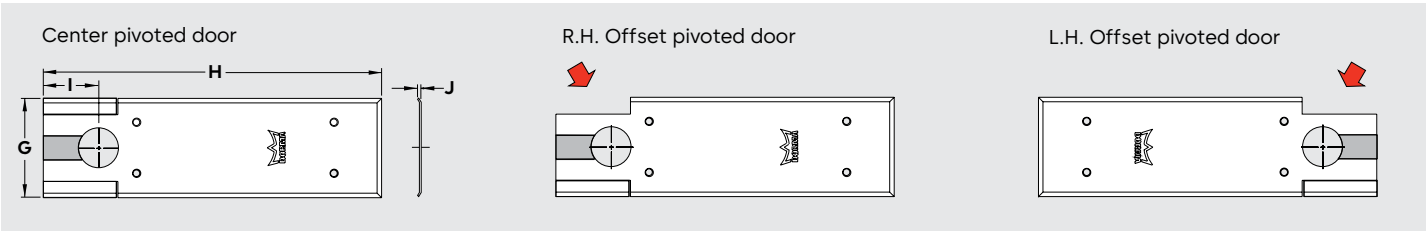
The BTS 75V universal cover plate 7510, suitable for left hand/right hand, 3/4" offset, 1-1/2" offset, and center pivoted doors.

	G	H	I	J
Inches	4-1/8	12-1/8	2-9/32	3/32
Millimeters	105	308	58	2



The BTS 80 and BTS 80 EMB universal cover plate 7410, suitable for left hand/right hand, 3/4" offset, 1-1/2" offset, and center pivoted doors.

	G	H	I	J
Inches	4-1/8	14-3/32	2-9/32	3/32
Millimeters	105	358	58	2

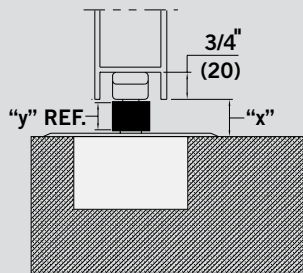


Accessories for independently hung installations

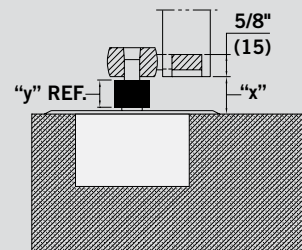
Spindles

Spindle no.	Dimension "x" (Door clearance)	3° Pre-load	Spindle no.	Dimension "y"
74003	5/16"		80003	1/8"
74005	1/2"		80005	5/16"
74007	5/8"	-		7/16"
74010 ((STD))	3/4"		80010	1/2"
74012	13/16"	-		5/8"
74015	7/8"		80015	11/16"
74020	1-1/8"		80020	7/8"
74025	1-5/16"		80025	1"
74030	1-1/2"		80030	1-5/16"
74035	1-11/16"	-		1-1/2"
74040	1-7/8"	-		1-11/16"
74045	2-1/16"	-		1-7/8"
74050	2-5/16"	-		2-1/16"

Center hung applications



Offset hung applications



Extended spindle insert

Note: Closer and arm must be installed per template for door clearances shown to be valid.

Closers with extended spindle inserts are used with thresholds, carpeted floors, terrazzo pans or in cases where more clearance between door and floor is required. All spindles are zinc plated.

Pre-load spindles

Spindles are available with a 3° pre-load for additional pressure to hold door in the closed position. Normally, this is only necessary

for center-pivoted single acting applications. However, they can also be used with other applications to compensate for templating errors. Specify hand of pre-load spindle when ordering.

Our Sustainability Commitment

We are committed to foster a sustainable development along our entire value chain in line with our economic, environmental and social responsibilities toward current and future generations. Sustainability at product level is an important, future-oriented approach in the field of construction. In order to give quantified disclosures of a product's environmental impact through its entire life cycle, dormakaba provides Environmental Product Declarations (EPD), based on holistic life cycle assessments. <https://www.dormakabagroup.com/en/sustainability/product-declarations>.

Our offering

Access Automation Solutions

Entrance Automation
Entrance Security



Access Control Solutions

Electronic Access & Data
Escape and Rescue Systems
Lodging Systems



Access Hardware Solutions

Door Closers
Architectural Hardware
Mechanical Key Systems



Services

Technical Support
Installation and commissioning
Maintenance and Repair



Key & Wall Solutions

Key Systems
Movable / Sliding Walls



Safe Locks

Electronic Safe Locks
Mechanical Safe Locks
Boltworks and Accessories



Glass systems

Manual door systems
Glass fittings
Horizontal Sliding Walls



DHW_1665_BR_EN CEI 0225
Subject to change without notice

dormakaba USA Inc.
6161 E 75th Street
Indianapolis, IN 46250
1-800-523-8483
dormakaba.us



dormakaba.com