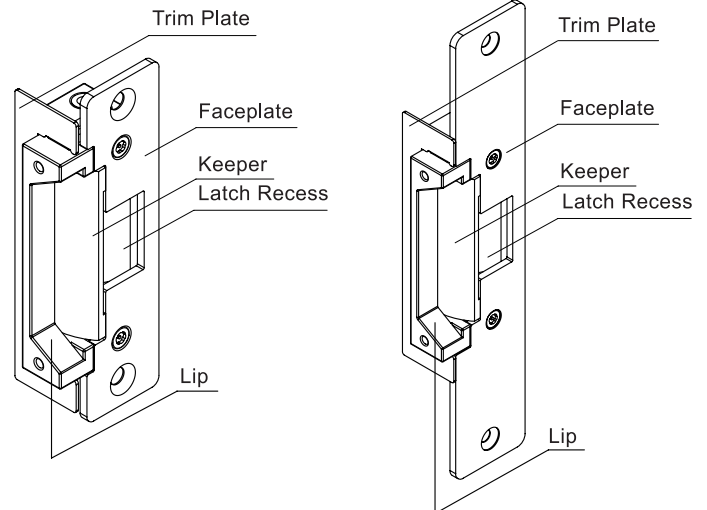


# KES100 Electric Strike

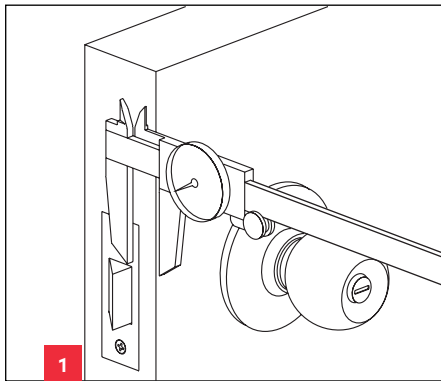
## Installation Instructions

### Specifications

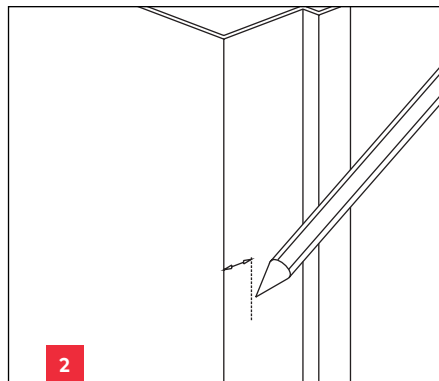
Operating Voltage	12/24 VDC
Voltage Tolerance	±15%
Current Draw	250mA/12VDC ; 150mA/24VDC
Operating Temperature	-10°C~45°C
Humidity	0~95%
Optional Bracket	KESLP125, KESLP150



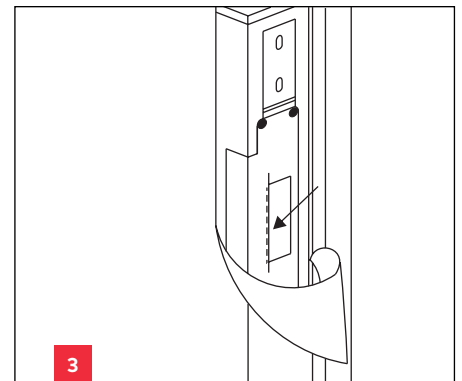
### Installation Instructions



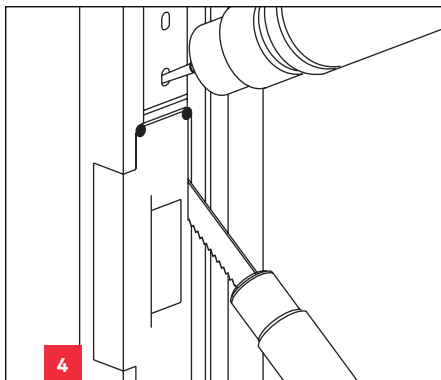
Measure the vertical and horizontal position of the latch bolt on the door leaf.



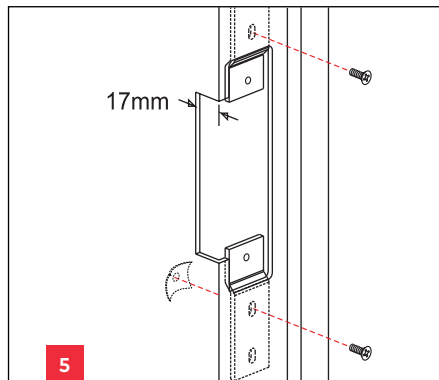
Mark the position of the latch bolt on the door frame as shown in figure.



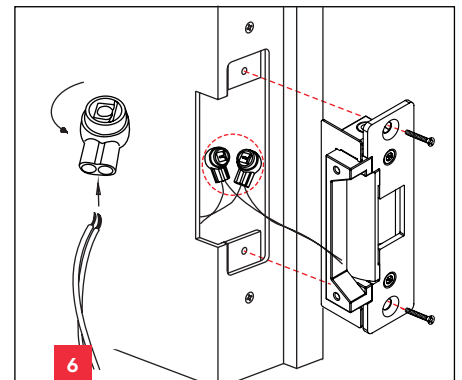
Align the installation template to the marked line.



Drill the holes and cut the door frame out as indicated by the template.

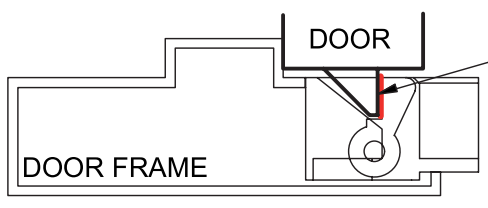


Fix the fixing plugs tightly.



Connect to the power and test the electric strike before mounting the unit.

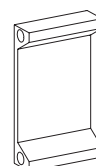
### Top View



Ensure a minimum 1mm gap between the latch and the front face of the release plate to avoid pre-load on strike.

### Optional Brackets

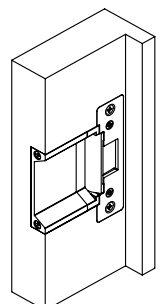
Lip extension brackets for wide jamb.



KESLP150  
50mm



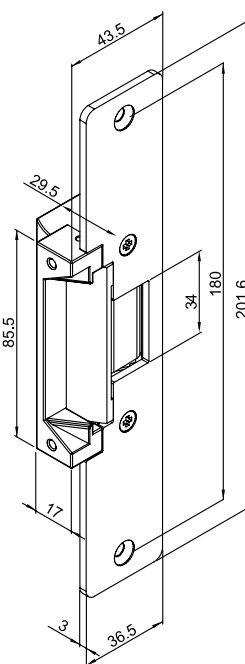
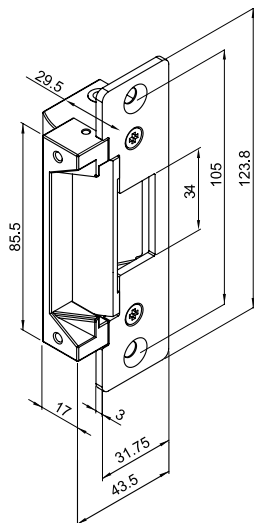
KESLP125  
25mm



# KES100 Electric Strike

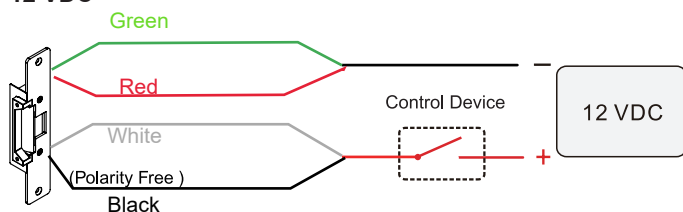
## Installation Instructions

### Connecting Diagrams

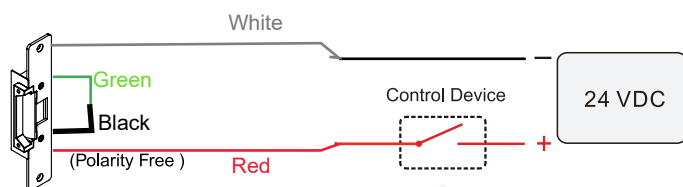


### Dual Voltage (12V/24V)

#### 12 VDC



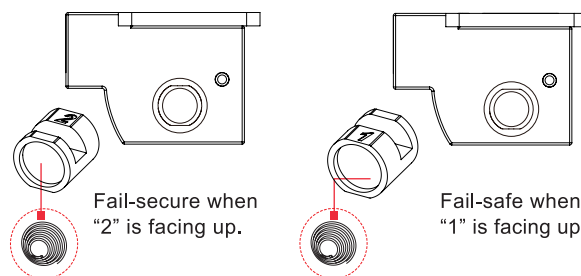
#### 24 VDC



(N.C./N.O. contacts, i.e. Readers)

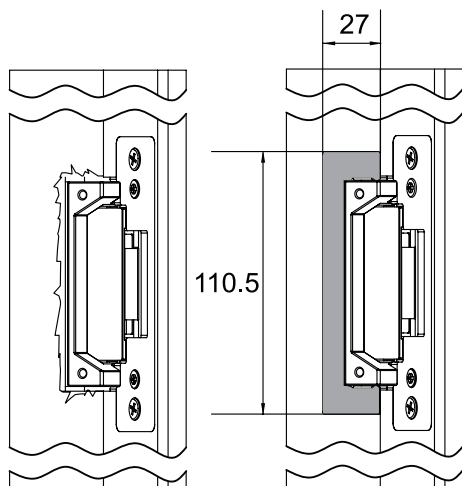
N.C. contact or access relay for "Fail-safe" setting.  
N.O. contact or access relay for "Fail-secure" setting.

### How to Change Version

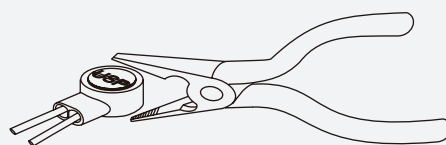


### Control Mode

### Butt Splice (IDC) Connector



If the hole was cut too large, a trimming plate can be used to beautify the appearance.



Place the wire inside the connector and use pliers to press down on the head of the connector evenly.