

C100

Cylindrical locksets

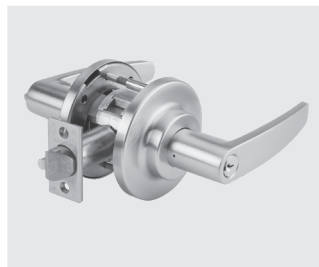
C100 lever locks shown with E Rose



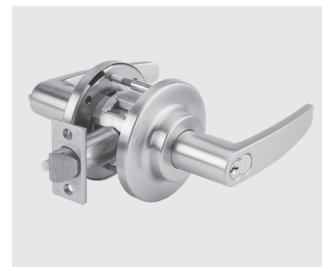
C100LCE



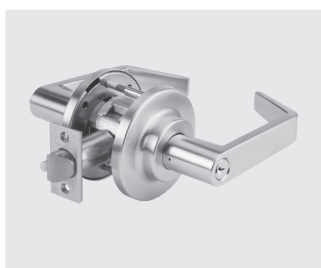
C100LCE IC



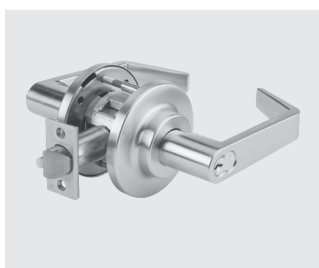
C100LGE



C100LGE IC



C100LRE



C100LRE IC

C100 lever locks shown with C Rose



C100LCC



C100LCC IC



C100LGC



C100LGC IC



C100LRC



C100LRC IC

Functions

ANSI	dormakaba	Description
F75	C110	Passage
F89	C112	Exit
F111	C125	Exit/communicating passage
F77	C130	Patio
F76	C140	Privacy, bedroom or bath
—	C144	Hospital privacy
F112	C148	Exit/communicating storeroom
F82	C150	Office/entry
F109	C153	Entry
F92	C155	Service station
F88	C160	Apartment
F113	C165	Exit/communicating classroom
F91	C166	Store door
F84	C170	Classroom
F80	C172	Communicating
F90	C173	Corridor
F110	C177	Classroom intruder
F86	C180	Storeroom
F87	C182	Asylum
F93	C185	Faculty restroom/hotel
—	C180EL	Electrically locked (fail safe)
—	C180EU	Electrically unlocked (fail secure)
—	C101	Single dummy
—	C102	Double dummy

Applications

C100 heavy duty Grade 1 cylindrical locksets are especially suited for educational, health care, institutional, commercial and industrial applications. The broad range of functions and designs fulfill all cylindrical lock applications.

Certification/Compliance

- ANSI—Meets A156.2 Series 4000 Grade 1; meets IBC/A117.1 and ADA requirements for accessibility
- UL/CUL, UL 10C Positive Pressure—All C100 are 3 hour fire rated; Locks with 9/16" throw latch bolts are listed for A label and lesser class doors, 4'0" × 8'0" maximum per leaf
- California State Reference Code—(Formerly title 19, California State Fire Marshall standard) all levers with returns, return to within 1/2" (12 mm) of door face

Features

- All C100 Series locks feature advanced design concepts for extreme reliability and are manufactured with the finest materials for exceptional durability.
- To ensure exceptionally smooth operation, the C100 Series locks with lever trim incorporate a chassis components that are brass or corrosion-treated steel. This design provides both extremely high strength and an extended service life for the lock mechanism.
- C100 Series locksets are easy to install in both wood and hollow metal doors with ANSI/BHMA Standard A156.115 preparations for cylindrical locks.
- All C100 Series lever locks are through-bolted for additional strength and reliability.
- All C100 Series operating lever trim features a specially designed freewheeling function to protect the lock from damage caused by excessive torque applied to the lever handles. When locked, the outside lever handle will move freely through a 60° arc without operating the latch bolt. This free movement minimizes the opportunity for damage to the lock mechanism.
- All C100 Series lever handle locks include a special, high-strength spring and positive stop to eliminate unsightly sagging levers.
- All C100 Series lever locks are easily adjustable to accommodate doors from 1-3/4"–2-1/4" thick without spacers (1-3/8" with two spacers B55044). Consult the factory for other thicknesses..
- All C100 Series locks are available in the following backsets:
2-3/4" (70 mm) standard and 3-3/4" (95 mm), and 5" (127 mm).

Cylinders and keying

- Unless otherwise specified, cylinders will be provided in standard keyway with two (2) nickel silver keys
- Optional patented key system available
- Refer to separate Price List for full details and options such as master keying, retrofit cylinders and keyways, and small format interchangeable cores

Warranty

For details refer to Warranty Statement.

Exposed trim

Brass or stainless steel—levers are pressure cast zinc, plated to match finish symbols.

Finishes

- Brass—605 (Bright), 606 (Satin), or 605 (Bright, Clear Coated)
- Bronze—612 (Satin) or 613 (Dark Oxidized Satin).
- Nickel—619 (Satin)
- Chrome—625 (Bright) or 626 (Satin)

Note: Consult factory for finishes not shown.

Antimicrobial Protected Coating: Specify **AM**.

Special finish notes

ANSI/BHMA A156.18 standards describe 613 Dark Oxidized Satin Bronze finish as a category B finish. B category finishes, "do not match from one alloy or form of material to the next and from one manufacturer to the next." The 613 finish may vary between manufacturers' products and models.

In some instances, for customer convenience, the most appropriate BHMA finish symbols are used to indicate similarity of appearance, regardless of base metal or finishing process. Finishes of latches, strikes, cylinders/cores, and visible mounting screws, though similar in appearance, may differ from the finish of the trim. Finish designations in the 600 numbers are the BHMA (Builders Hardware Manufacturers Association) industry standard.

Security screws

Torx® tamper-resistant screws are available for all exposed screws. Specify TX.



dormakaba USA quality and environmental management systems in Indianapolis, are certified to ISO 9001:2008 and ISO 14001:2004.