

Confidant RFID

Complete Lock with ASM Mortise / Tubular Latch

Installation instructions

PK3621-T - 2022 - 09

EN

dormakaba 

Confidant RFID™ Installation Instructions

IMPORTANT: Wear Safety glasses before starting the installation process.

Disclaimer	3
1. Tools	3
2. Inventory	4
American Steel Mortise (ASM)	4
Tubular Latch	5
3. Install Spindle	6
4. Install Outside Lever	7
5A. Adjust Handing (Tubular latch lock with privacy only)	8
5B. Prepare Inside Housing	8
5C. Change Position of Stopper if Required (ASM and ADB)	9
5D. Apply privacy thumb turn sticker (applicable only for multihousing locks or locks with automatic dead bolt)	9
6. Install Lock on Door	10
American Steel Mortise (ASM / Tubular Latch)	10
7. Install Inside Trim Cover	11
8. Plug Battery Holder	11
9. Test Lock Functionality	11
10. Program Lock - With Jack Cable	12
11. Install Battery Door	12
Annex A	13
Installation of Standard ASM Mortise	13
Reversing the Mortise Handing	14
Annex B	17
Install Outside Housing with Gasket	17
Annex C	17
Remove Battery Holder	17
Annex D	18
Install Bluetooth and Messenger module	18
Annex E	20
Remove cover of Bluetooth and Messenger module	20

Drilling Templates are in the center of the Installation Guide

Model: Confidant RFID
IC: 4652A-CRFID
FCCID: Q8SCONFIDANT-RFID

Regulatory Compliance: This device complies with Part 15 of the FCC Rules. Operation is subject to the following two conditions: (1) this device may not cause harmful interference, and (2) this device must accept any interference received, including interference that may cause undesired operation.

Any changes or modifications of this product, not approved by manufacturer will void the user's authority to operate the equipment. This device complies with Industry Canada licence-exempt RSS standard(s). Operation is subject to the following two conditions: (1) this device may not cause interference, and (2) this device must accept any interference, including interference that may cause undesired operation of the device.

Le présent appareil est conforme aux CNR d'Industrie Canada applicables aux appareils radio exempts de licence. L'exploitation est autorisée aux deux conditions suivantes : (1) l'appareil ne doit pas produire de brouillage, et (2) l'utilisateur de l'appareil doit accepter tout brouillage radioélectrique subi, même si le brouillage est susceptible d'en compromettre le fonctionnement.

Made in Canada ©2018 dormakaba. All trademarks and registered trademarks are the property of their respective owners.

Disclaimer

⚠ CAUTION

Please read and follow all directions carefully. Wear safety glasses when making the holes.

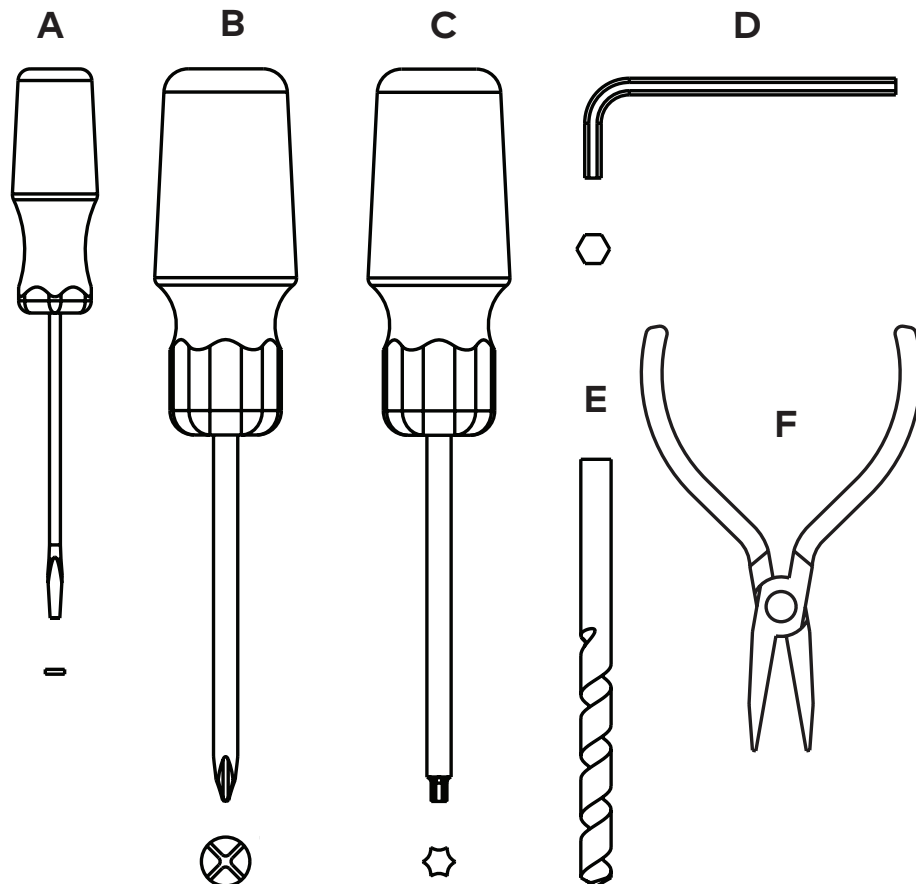
IMPORTANT

Carefully inspect windows, doorframe, door, etc. to ensure that the recommended procedures will not cause damage. Kaba Lodging Systems standard warranty does not cover damages caused by installation.

Respect applicable building codes regarding handle height.

Note: that the centerline of an ESM mortise does NOT pass through the screw holes on the strike.

1- Tools

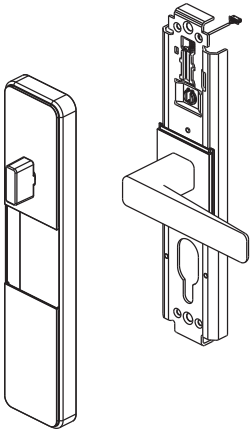


A - Screw Driver Small Flat
B - Screw Driver Phillips #1 & #2
C - Screw Driver Torx T-20

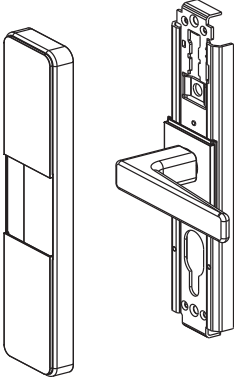
D - Hexagonal Key 3 mm
E - 25mm / 24mm / 19mm / 12mm / 10mm Drill Bit
F - Needle Nose Pliers

2- Inventory - American Steel Mortise (ASM)

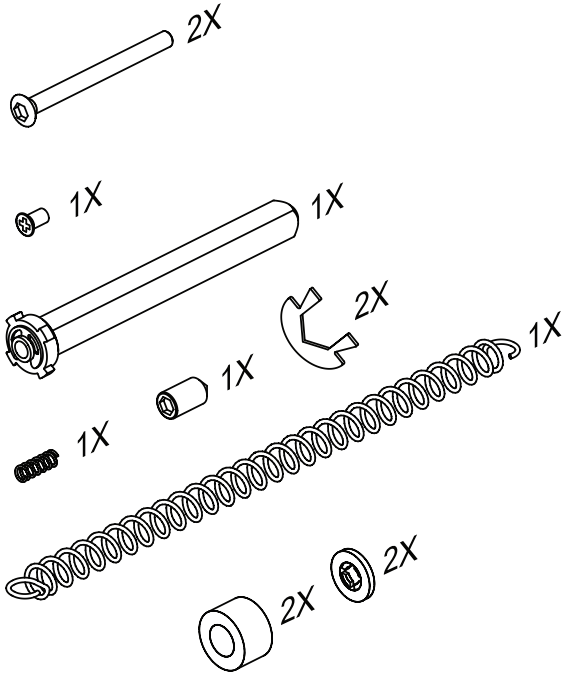
Inside Trim
with Thumbturn



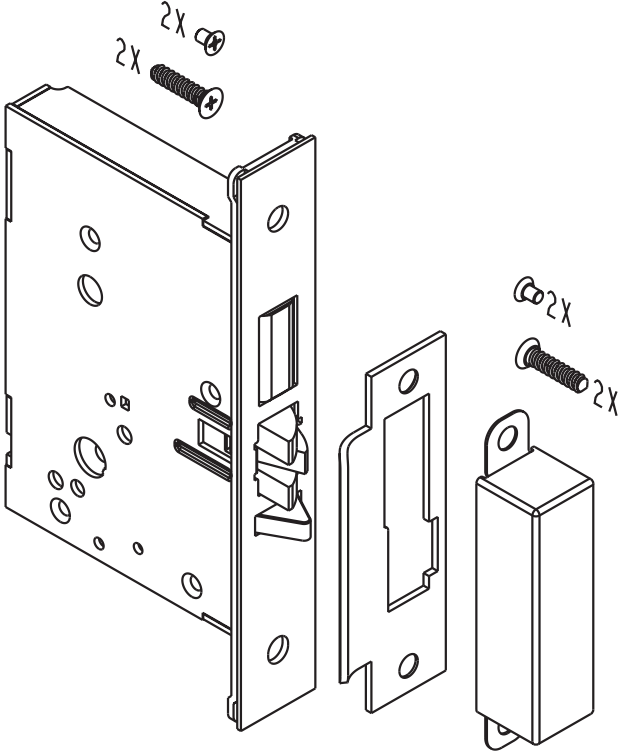
Inside Trim
without Thumbturn




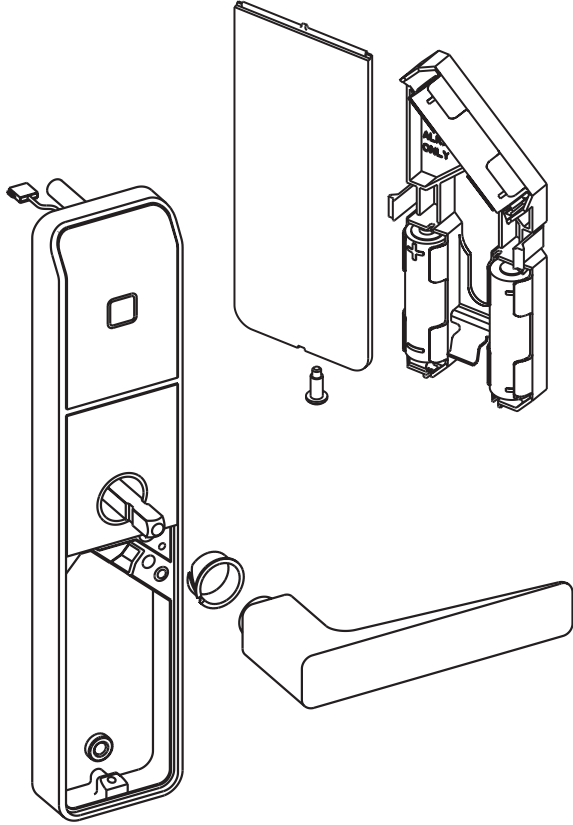
Hardware Bag



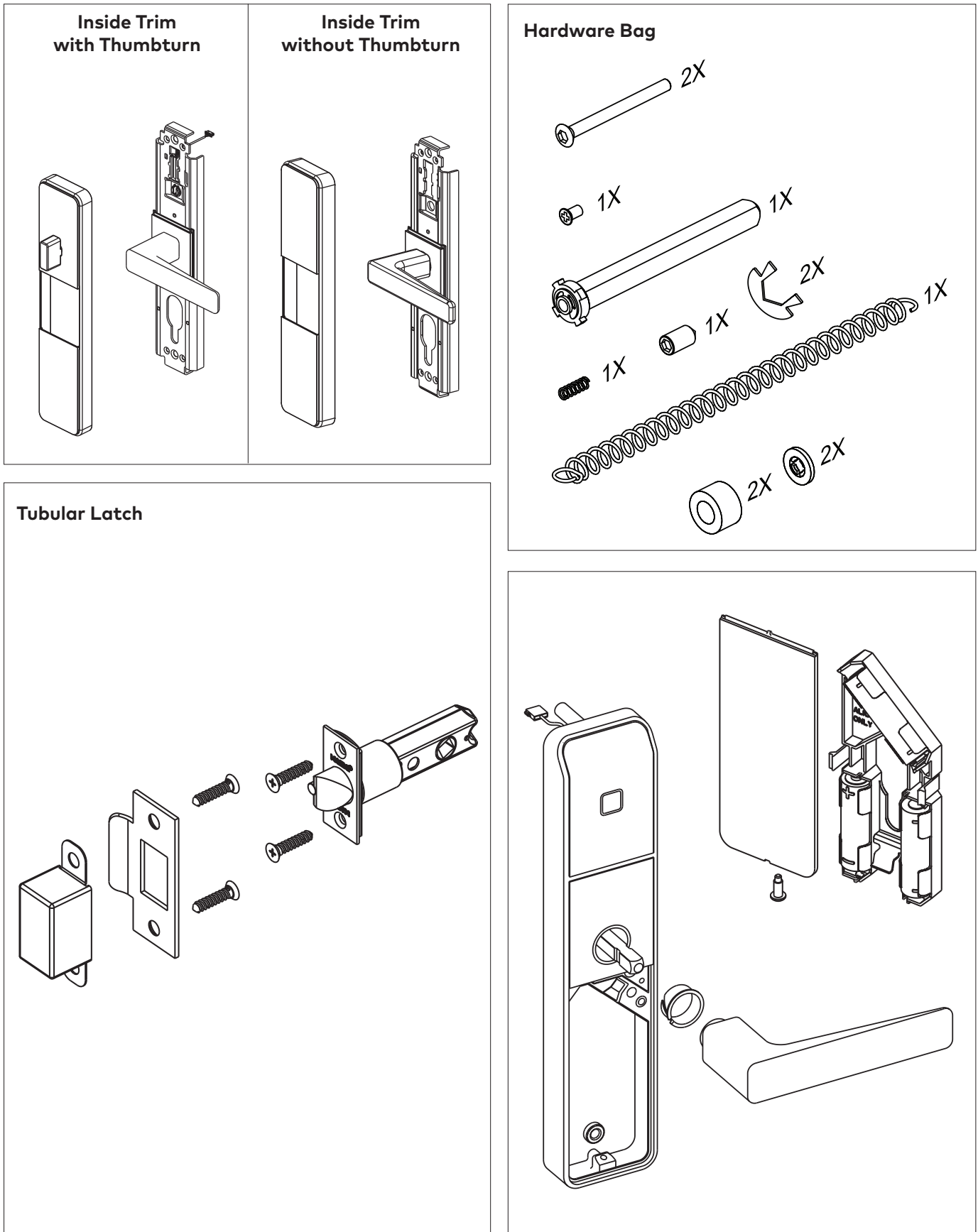
ASM Mortise



	dormakaba Canada Inc. 7301 Decarie Blvd. Montreal Quebec Canada H4P 2G7
0432-CPR-00072-06.01	18
EN 12209:2003/AC:2005	3H510G4H010
None	



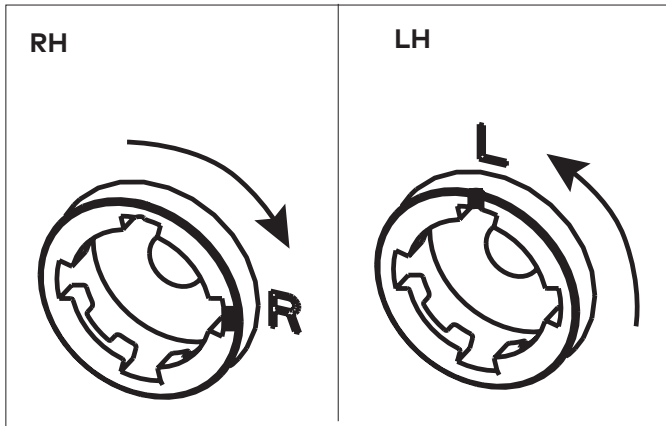
2- Inventory - Tubular latch



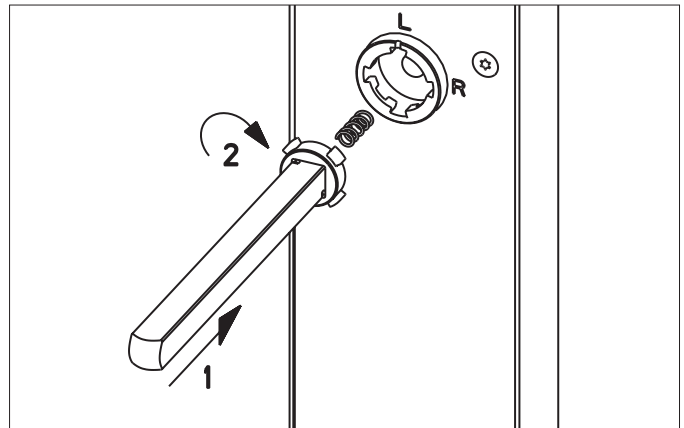
3- Install Spindle

1- Check Handing:

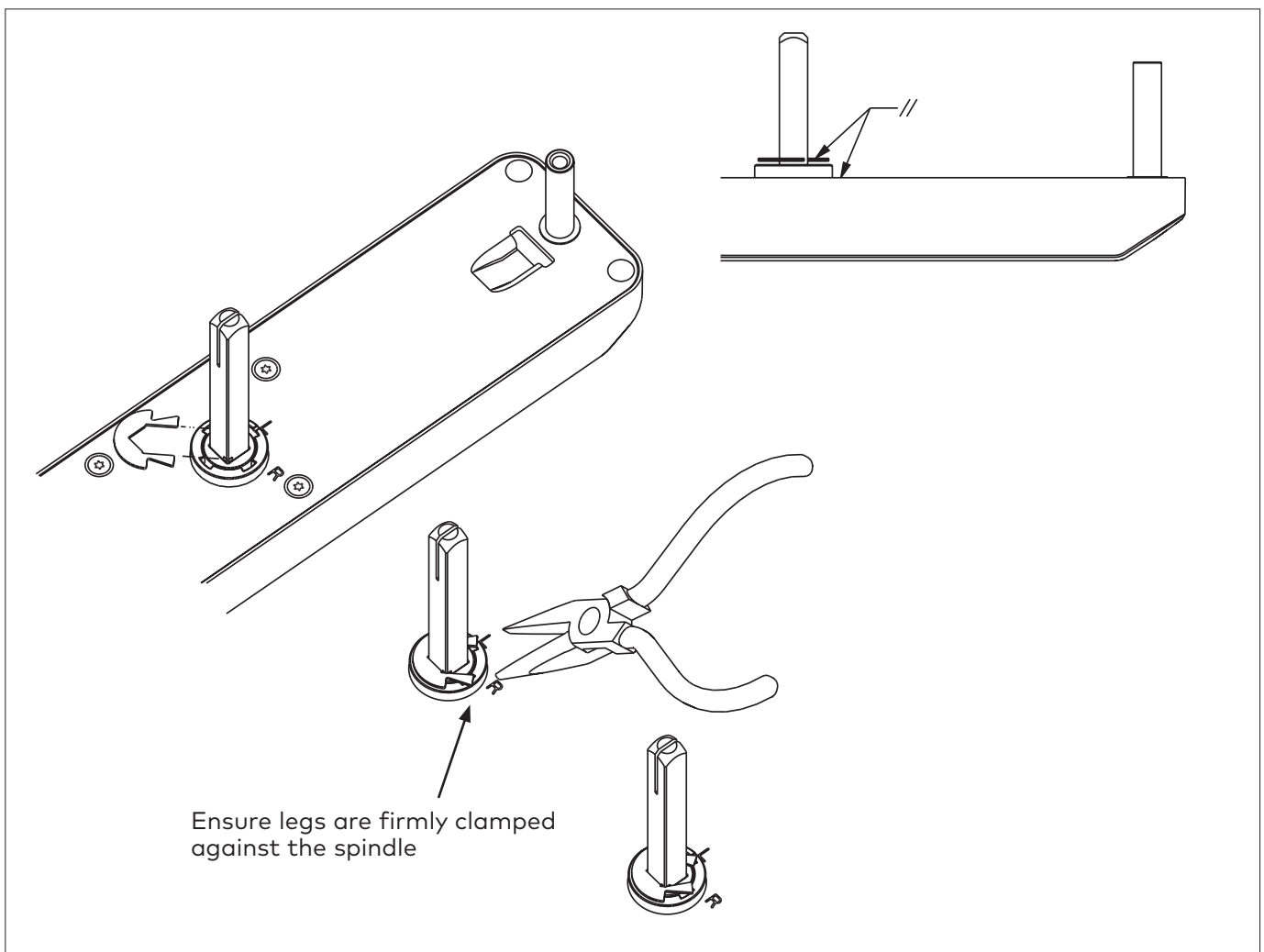
Adjust for Right Hand (RH) or Left Hand (LH)



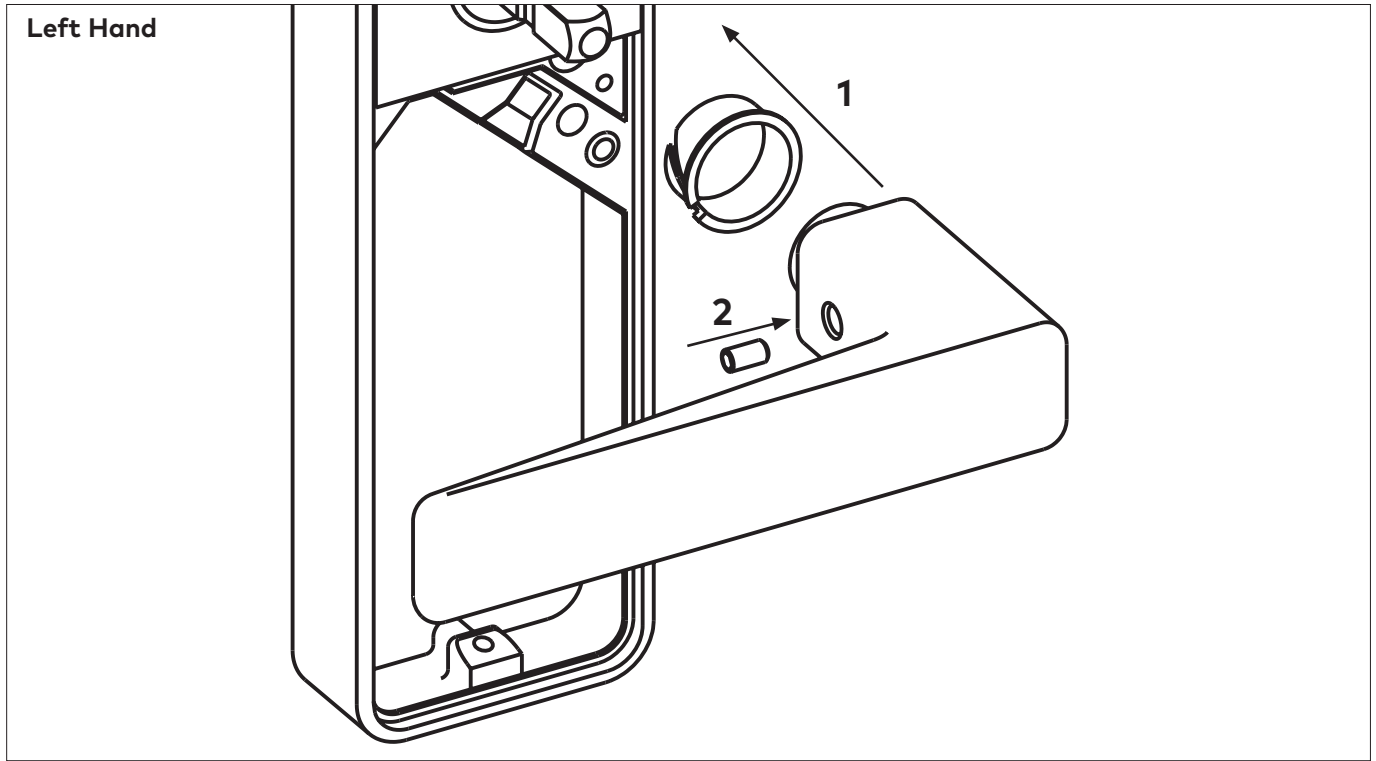
2- Insert Spindle.



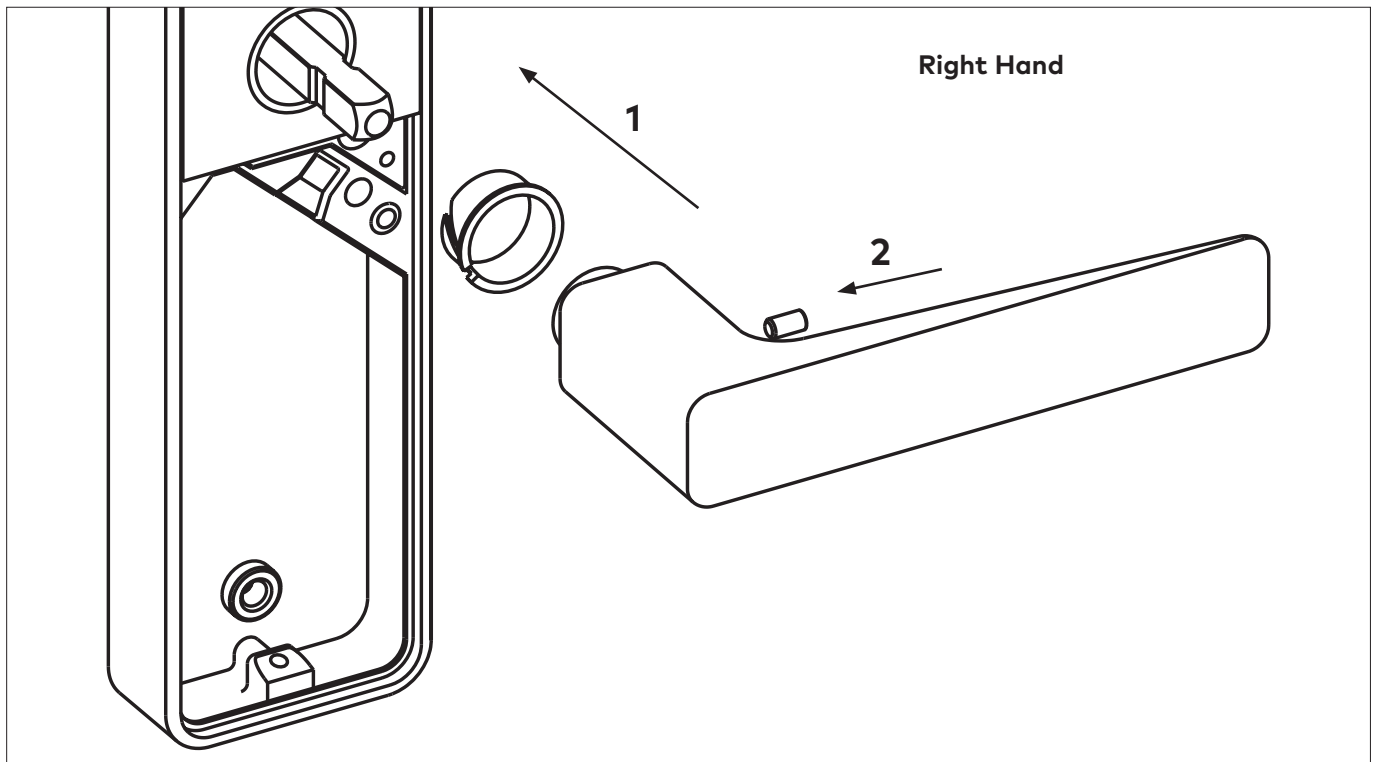
3- Attach and Clamp Spindle Clip to Spindle as shown.



4- Install Outside Lever

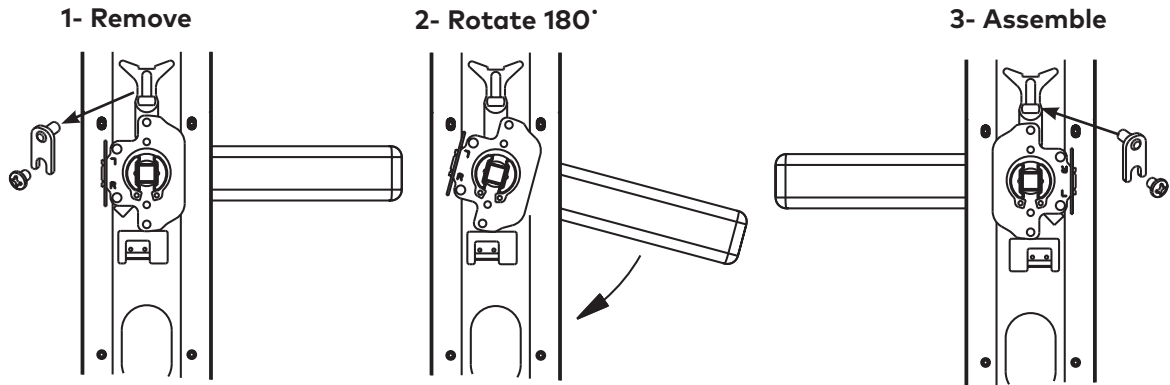


Note: Hold down the outside lever against the outside housing while tightening the lever set screw.

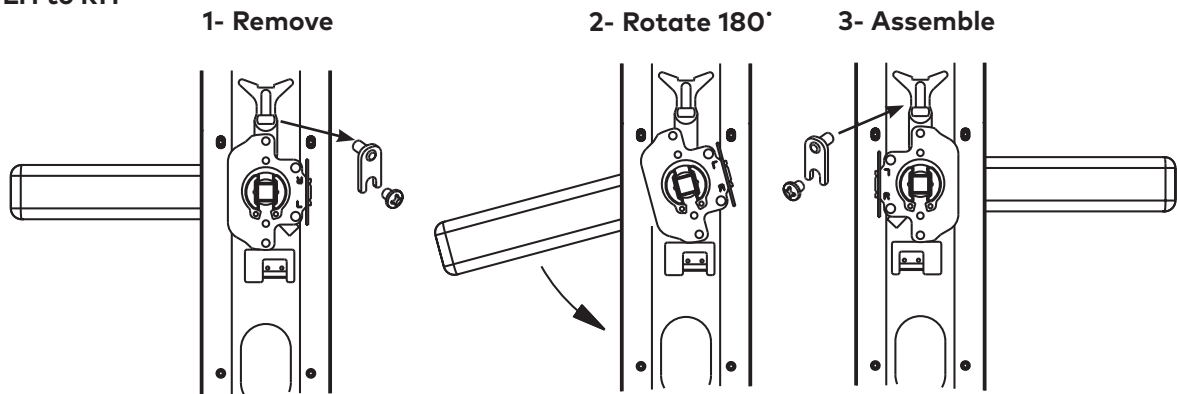


5A- Adjust Handing (Tubular Latch lock with Privacy Only)

Handing RH to LH

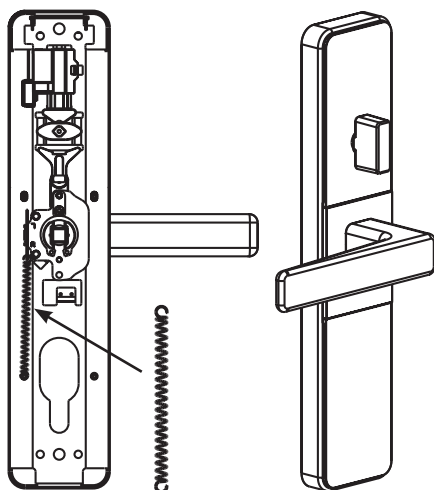


Handing LH to RH

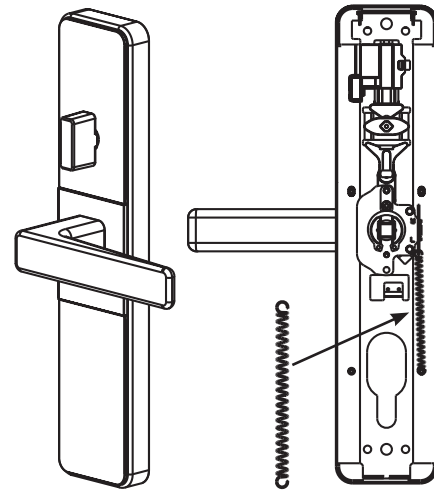


5B- Prepare Inside Housing

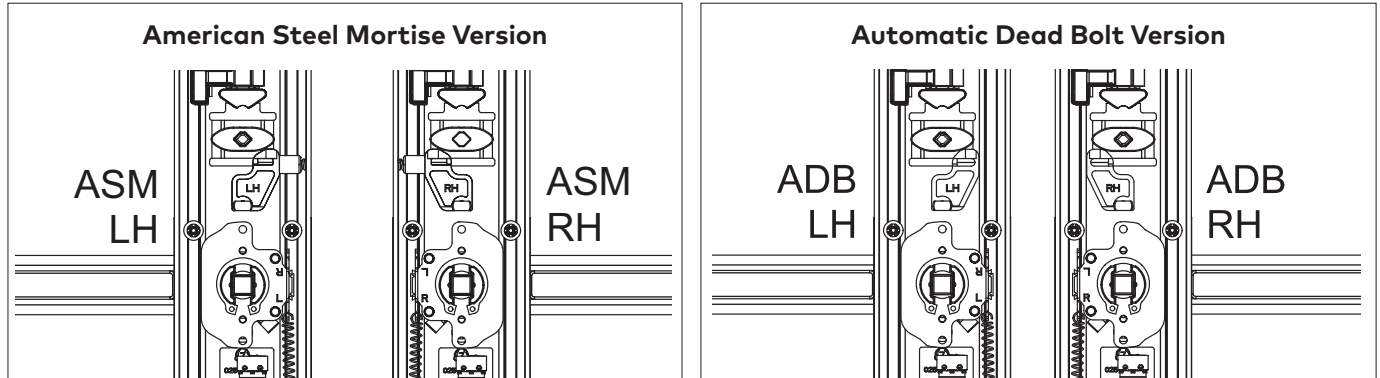
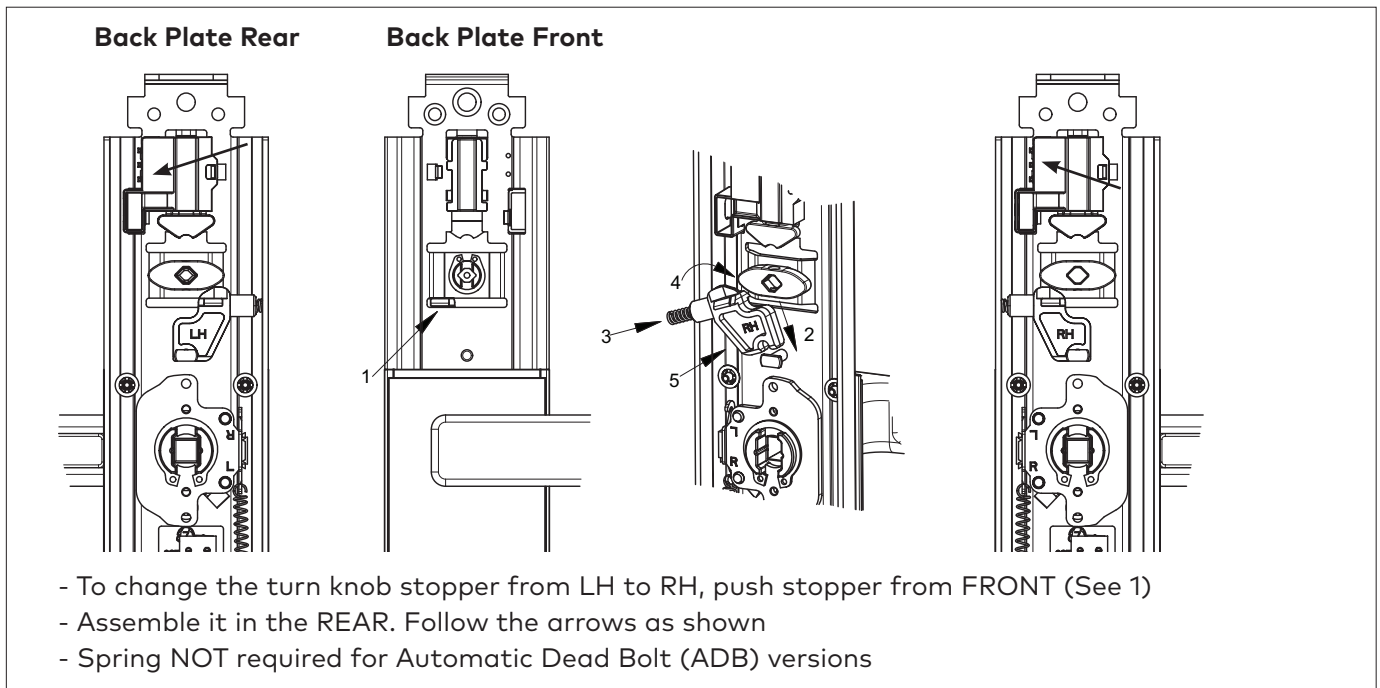
Inside Right Hand Housing



Inside Left Hand Housing

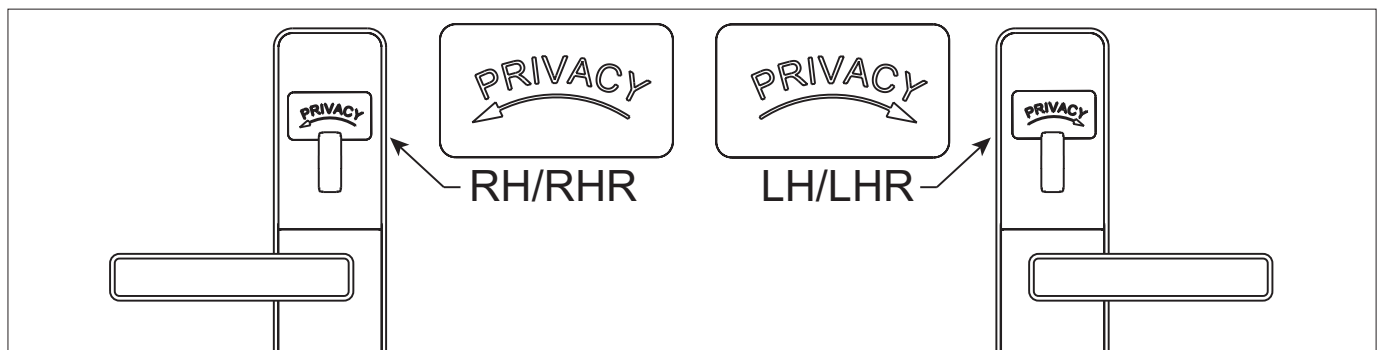


5C- Change The Position of Stopper if Required (ASM and ADB)



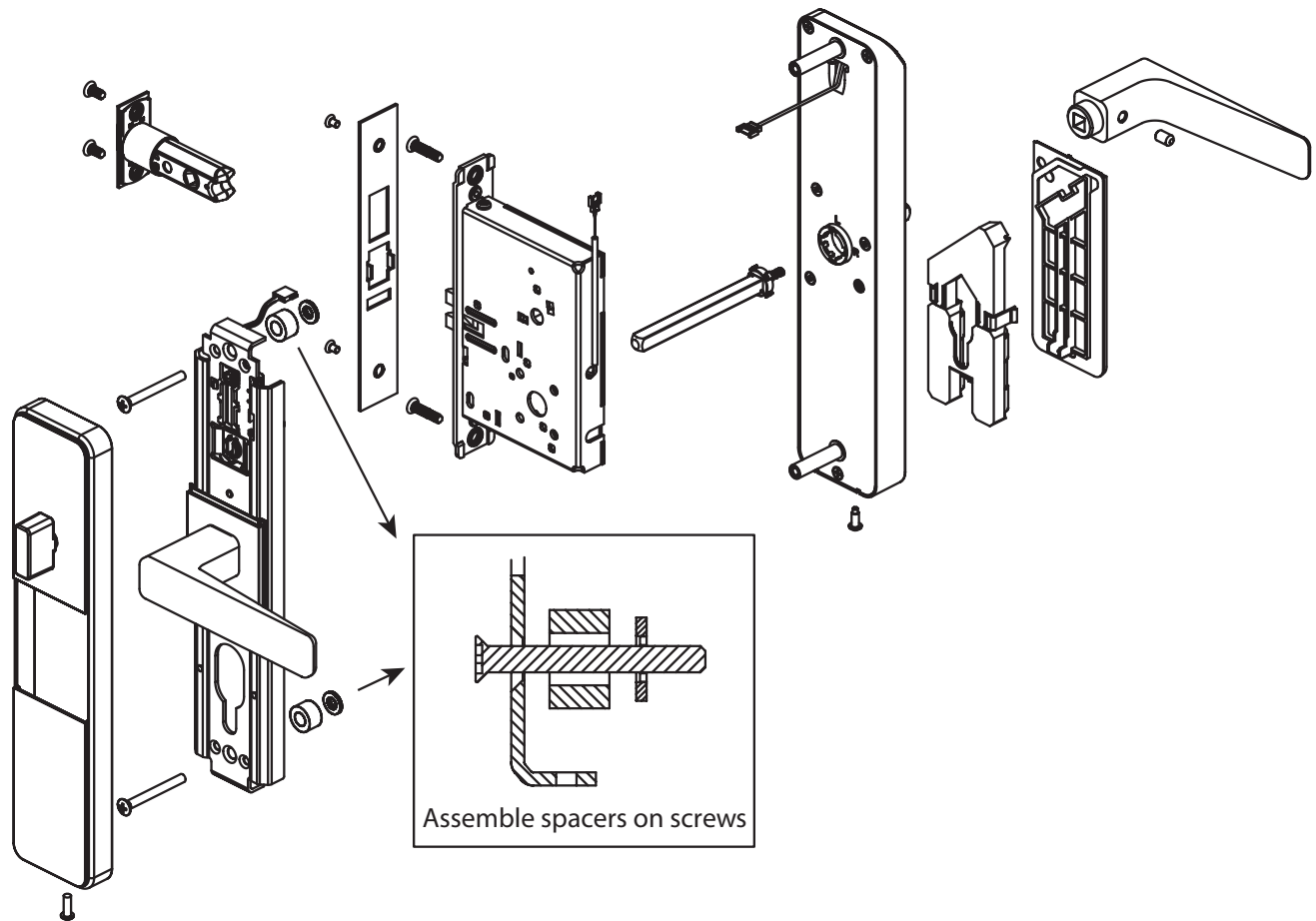
5D- Apply Privacy Thumb Turn Sticker

(applicable only for multihousing locks or locks with automatic dead bolt)



6- Install Lock on Door - ASM / Tubular Latch

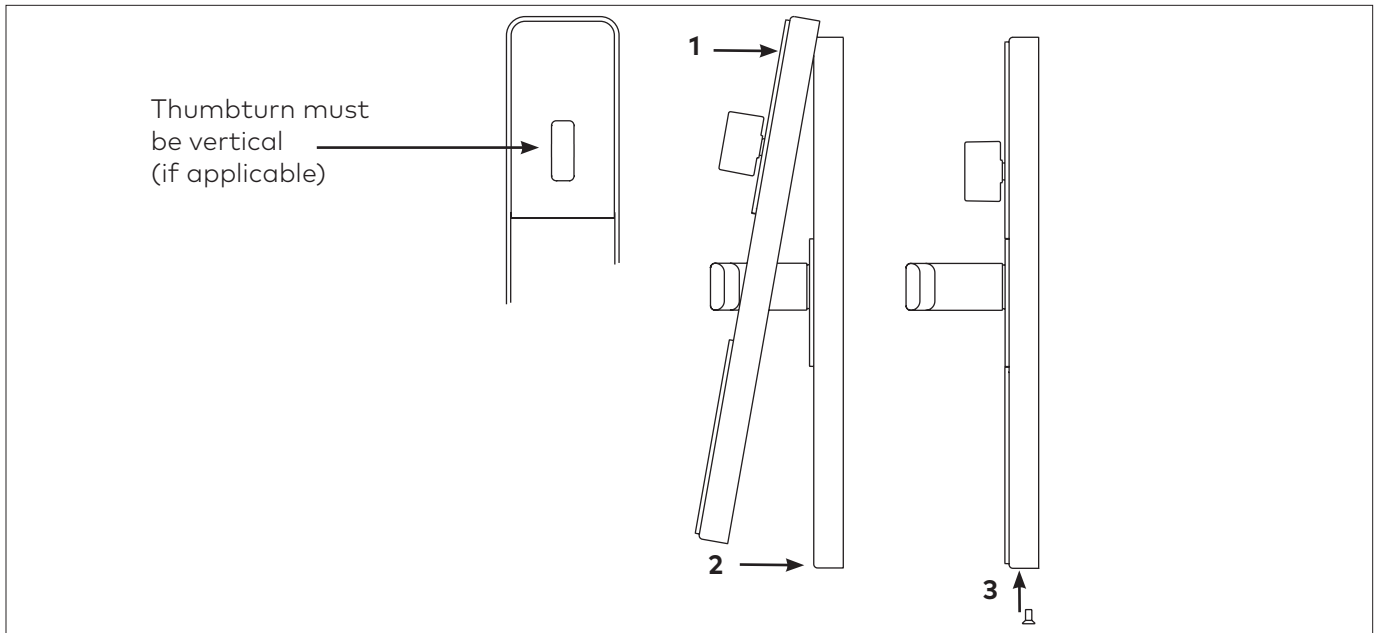
See Annex B for exterior applications



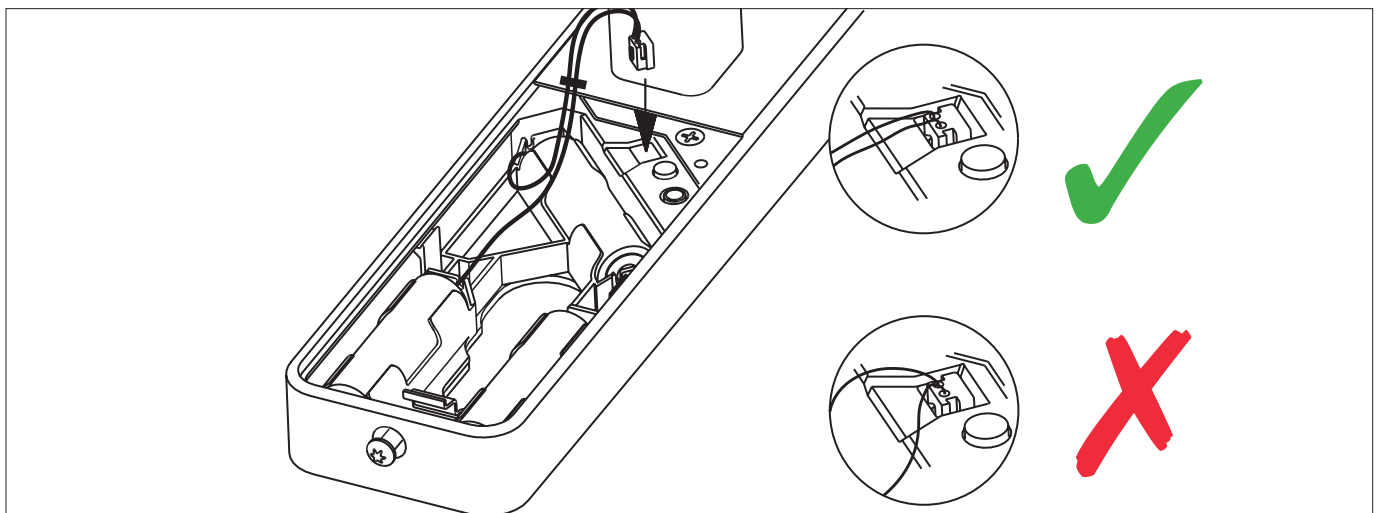
IMPORTANT

After connecting all cables, make sure all excess cables are pushed inside the hole(s) in the door.

7- Install Inside Trim Cover



8- Plug Battery Holder

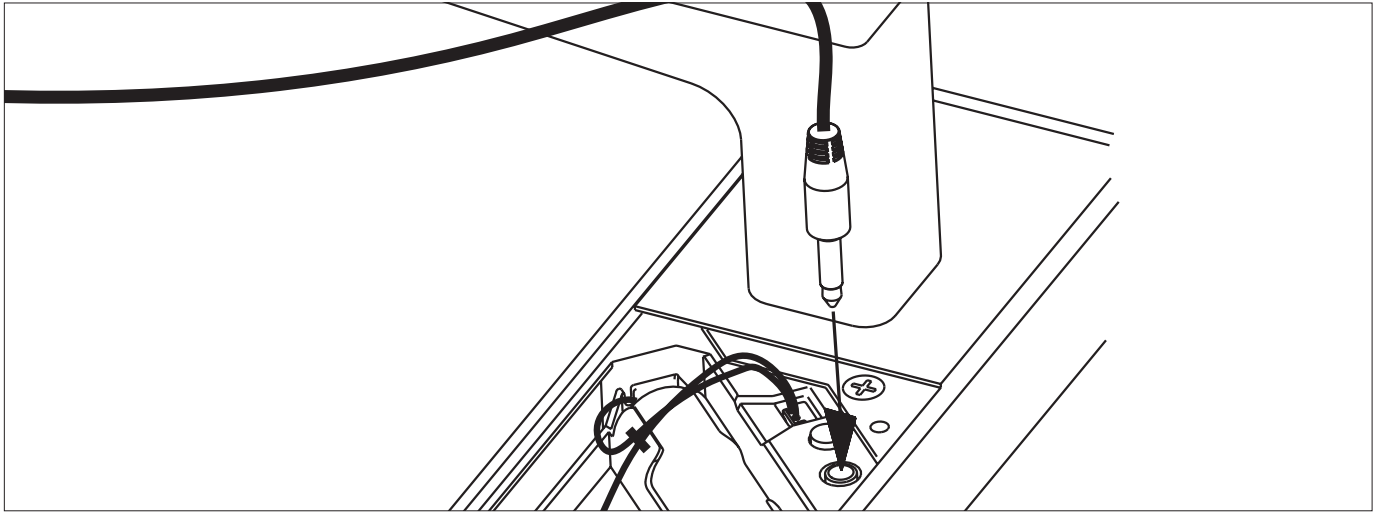


9- Test Lock Functionality

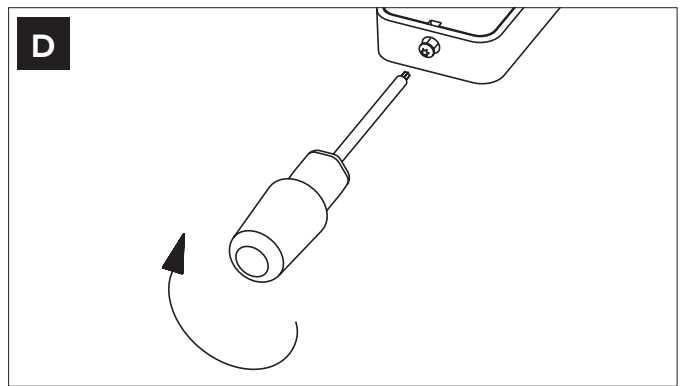
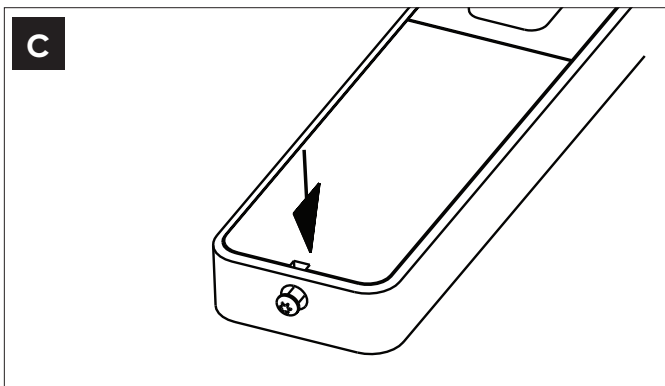
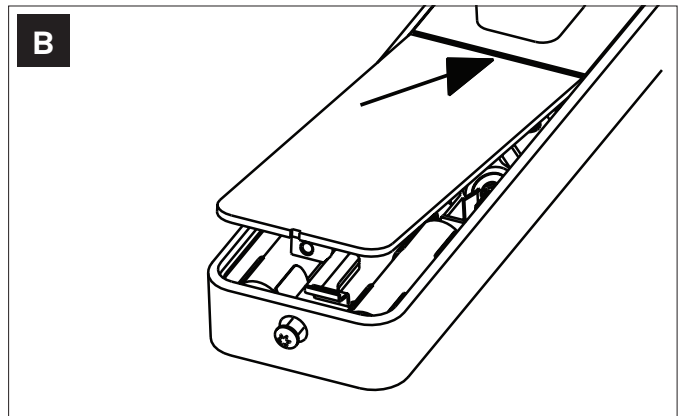
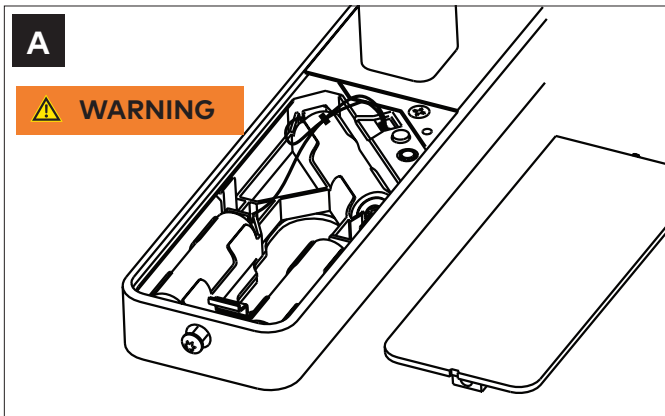
Make Sure Room Door is Open

- A - Present Test Keycard
- B - Check Green & Red Lights Flash
- C - Rotate Outside Lever to Check Bolt Retraction
- D - Release Outside Lever, Should Move Freely
- E - Rotate Inside Lever to Check Bolt Retraction
- F - Check Bolt Projection from Thumbturn

10- Program Lock - With Jack Cable



11- Install Battery Door



⚠ WARNING

For security reasons, lock must be programmed BEFORE installing the battery door. Every time the battery door is removed pass an emergency card or connect lock to FDU/M-Unit to reset the tamper alarm. Audit information is not affected.

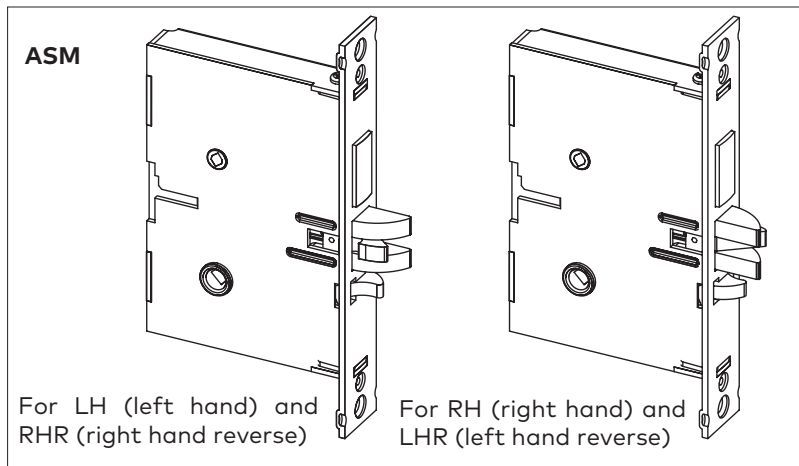
Annex A- Installation of Standard ASM Mortise

1.1 Check the Mortise Handing

Compare the mortise with the diagram below.

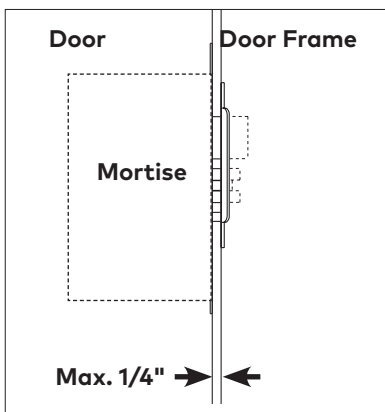
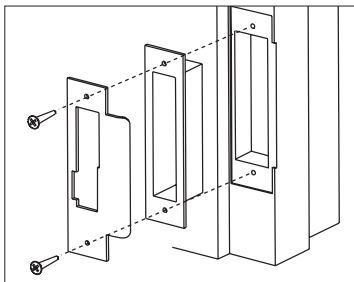
IMPORTANT

Refer to 1.2 to change the handing of a field-reversible mortise.



IMPORTANT

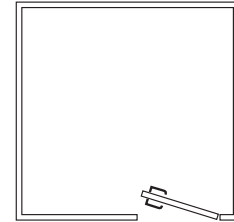
When strike is installed on wood frames under one inch thick, wood screws supplied are not adequate. Use screws of efficient lenght to engage the structural stud behind the frame. Use only the strike and dust box supplied. Use of non-approved parts may void the warranty.



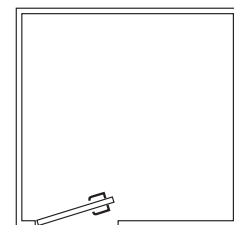
IMPORTANT

For **Auto Deadbolt** models the gap between the mortise front plate and the strike must **not exceed 1/4 "**

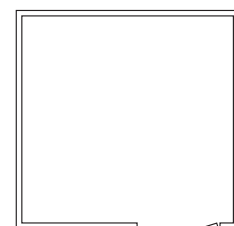
Door Handing (Top View)



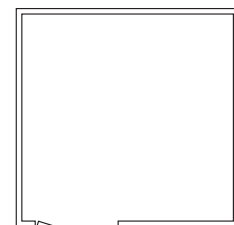
Right Hand (RH)



Left Hand (LH)



Right Hand Reverse (RHR)

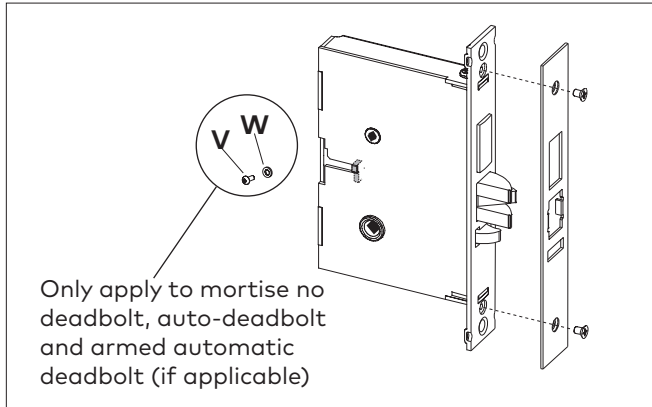


Left Hand Reverse (LHR)

Annex A • Reversing the Mortise Handing

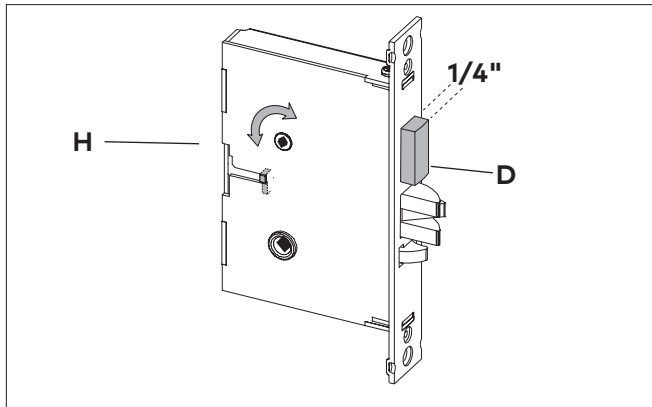
1.2 Reversible ASM

1. Remove the mortise faceplate. Remove screw (V) and lock washer (W) if applicable and **place the mortise on a flat surface for the following steps.**



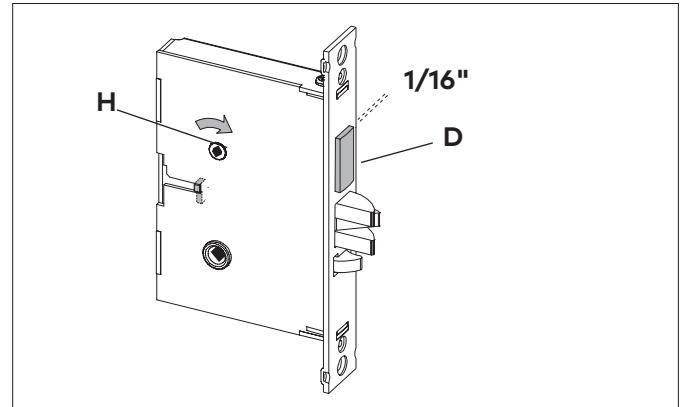
2. Partially extend the deadbolt:

For normal ASM, rotate hub (H) using a screwdriver, until the deadbolt (D) extends approximately 1/4".

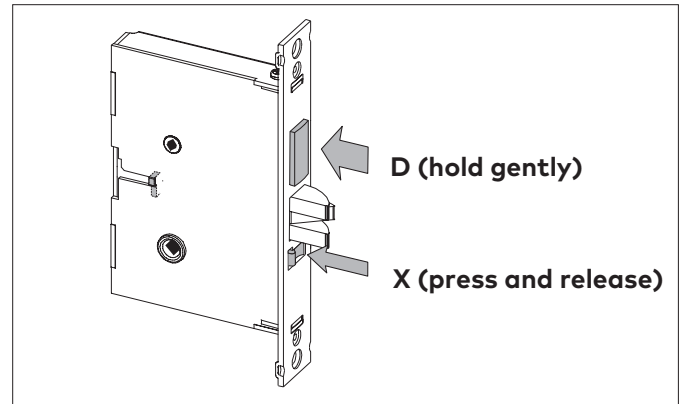


Proceed to step 3.

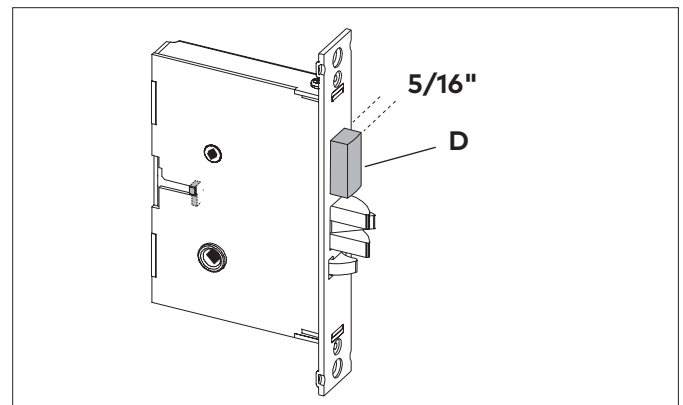
For Autodeadbolt ASM, rotate hub (H) until the deadbolt (D) is fully retracted. The deadbolt will extend approx. 1/16" from the mortise case.



Hold deadbolt (D) gently. Press and release the auxiliary latch (X). You should feel the deadbolt trigger and begin to extend under the force of the spring.



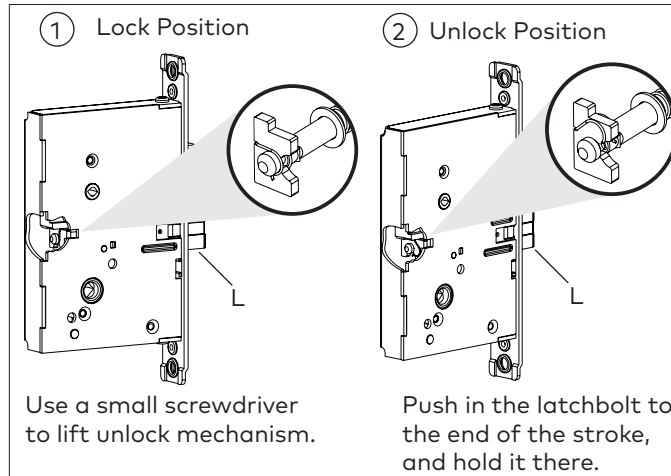
Release the deadbolt (D) gently. It should extend to 5/16" approx. and stop. If the deadbolt extends past this point, gently press it in until it locks at 5/16" throw, or start step 2 again.



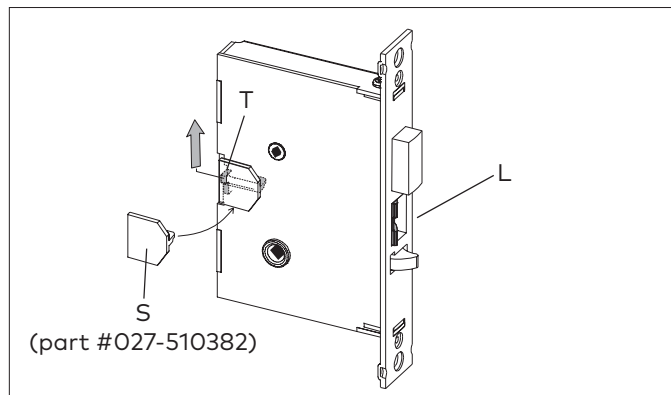
Annex A • Reversing the Mortise Handing

Reversing Handing ASM

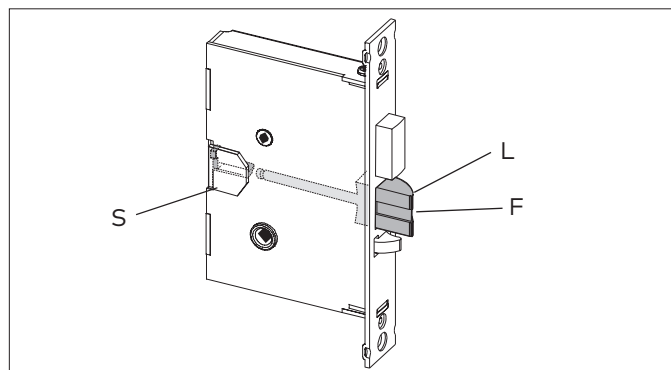
3. Push in the latch bolt (L) to the middle of its stroke, and hold it there. (Continue Step 1 and 2)



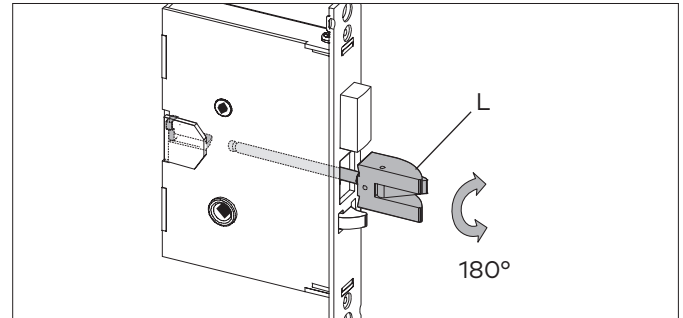
Hold the latch (L) inside the mortise, and insert the tailpiece retaining tool (S, part #027-510382 available separately) so that the tailpiece (T) will not drop inside the mortise case. Hold the tool and the latch with one hand, and slide up the tailpiece using a small screwdriver.



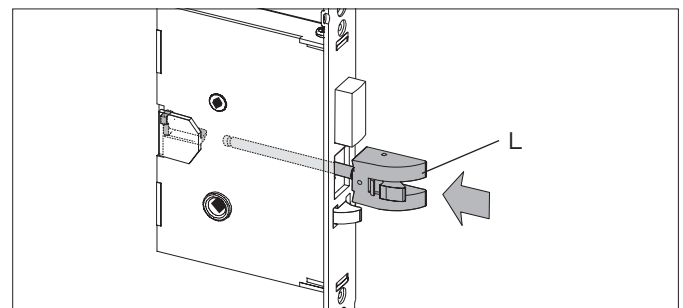
Continue to hold tool (S). Release the latch bolt (L) and keep the anti-friction latch (F) toward the flat side of the latch bolt so that the bolt extends fully.



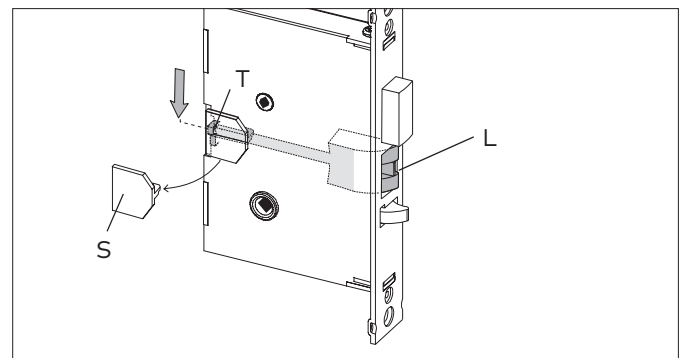
4. Pull out the latch bolt (L), until it just clears the front plate. (Note: If you remove the bolt completely, you must turn it 90° to re-insert it.)



Rotate the latch bolt (L) 180°. Re-insert it to the end of its stroke.



Holding tool (S) in place, re-engage tailpiece (T) with latch bolt (L) (slide tailpiece down). There may be some play required to align the parts. Remove the tool (S).



Release the latch to the middle of the stroke and hold it there. Use a small screwdriver to push the lock mechanism back on lock position (see step 1 and 2).

IMPORTANT

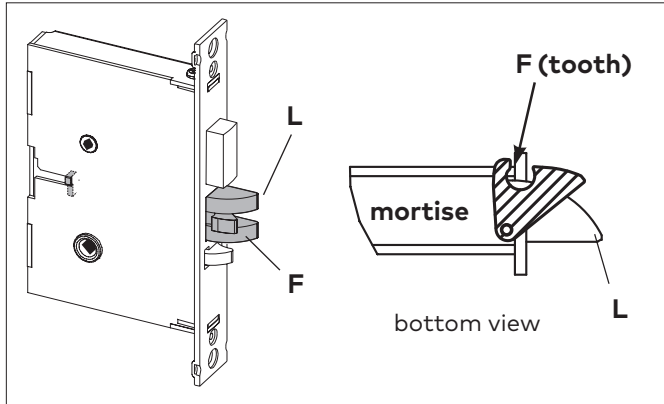
The lock mechanism has to be horizontal on lock position

Annex A • Reversing the Mortise Handing

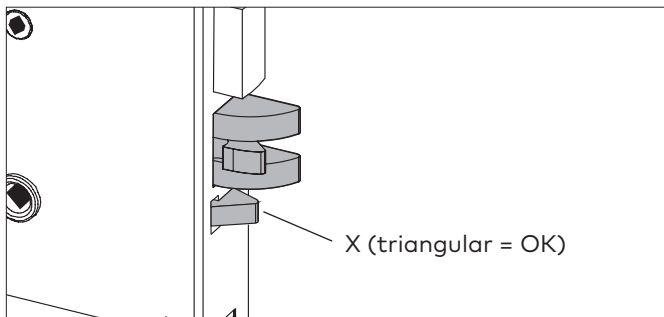
5. Release the latch bolt (L). Position the latch bolt so that the bottom tooth of the anti-friction latch (F) remains inside the mortise case as shown.

IMPORTANT

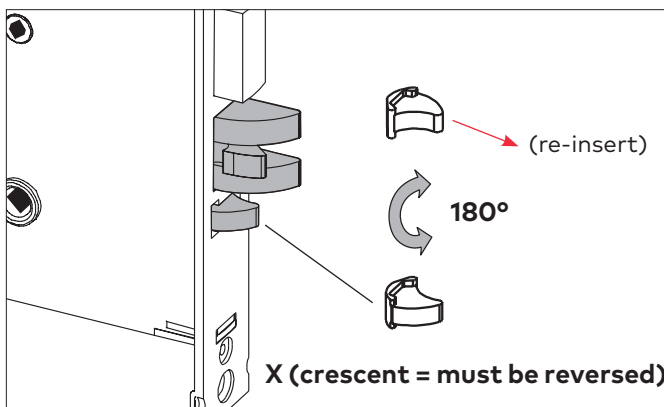
If the tooth of (F) is outside the mortise, you will not be able to re-assemble the faceplate on the mortise.



6. If the auxiliary latch (X) is shaped like a triangle, there is no need to change its handing.



If the auxiliary latch (X) is a crescent shape, remove it, turn it 180°, and replace it. The auxiliary latch slides easily in and out of the mortise.

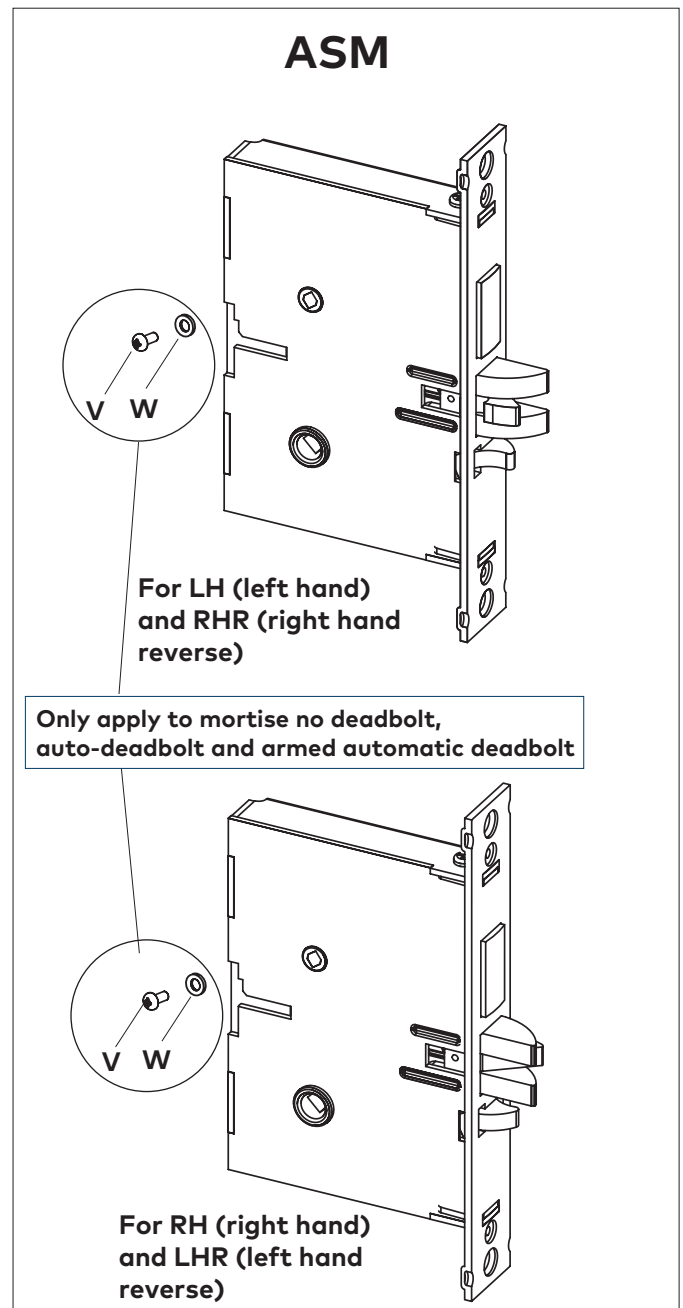


7. Assemble back screw (V) and lock washer (W) if applicable. The screw (V) must be tightened.

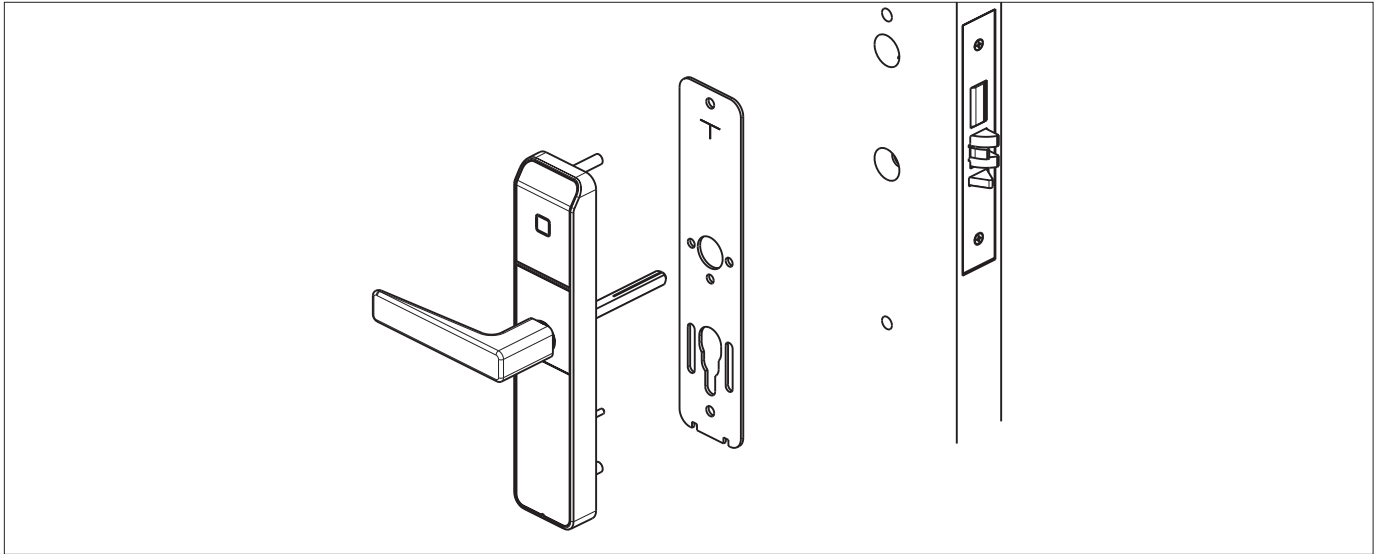
IMPORTANT

Screw (V) must not touch the back wall of mortise cut-out on the door

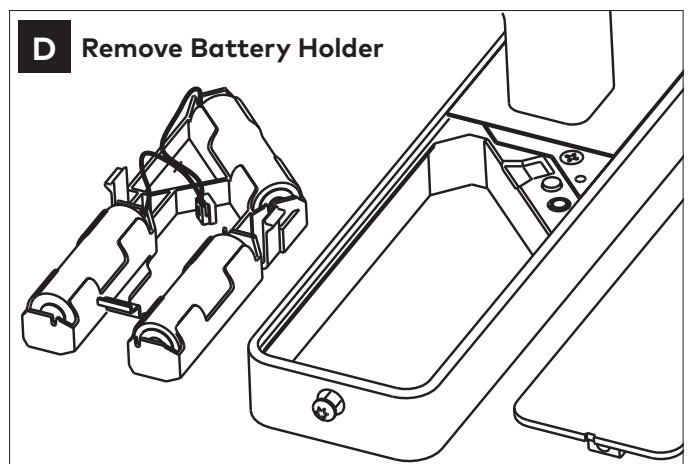
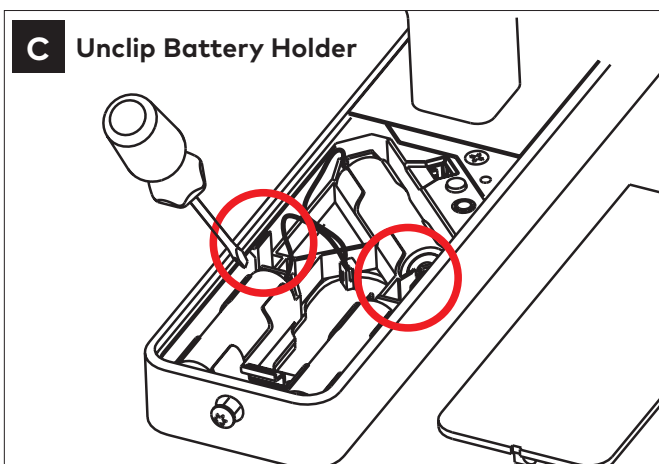
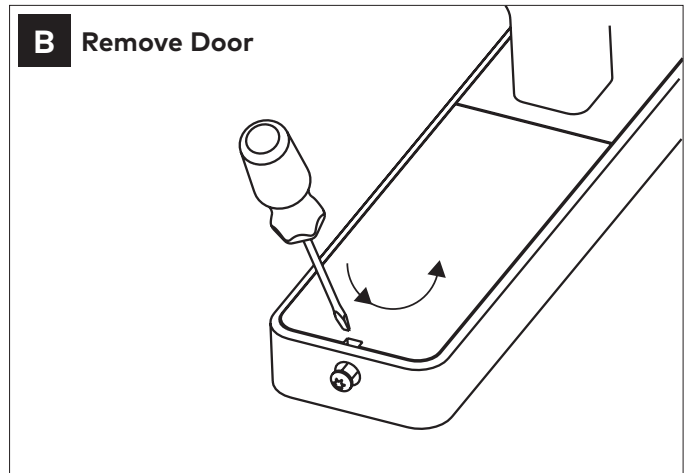
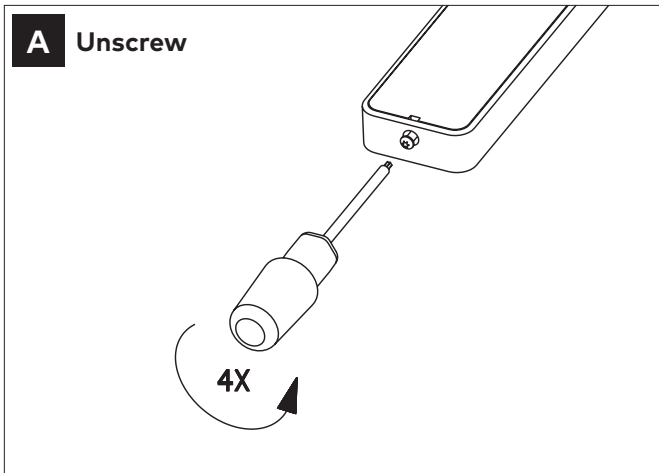
8. The mortise should look like the diagram below. (Check the orientation of the latch bolt and auxiliary latch.) Check the bevel of the mortise and change it if required as described in section 3.3, paragraph 6 page 10.



Annex B- Install Outside Housing with Gasket (Exterior and Ocean Front Versions)

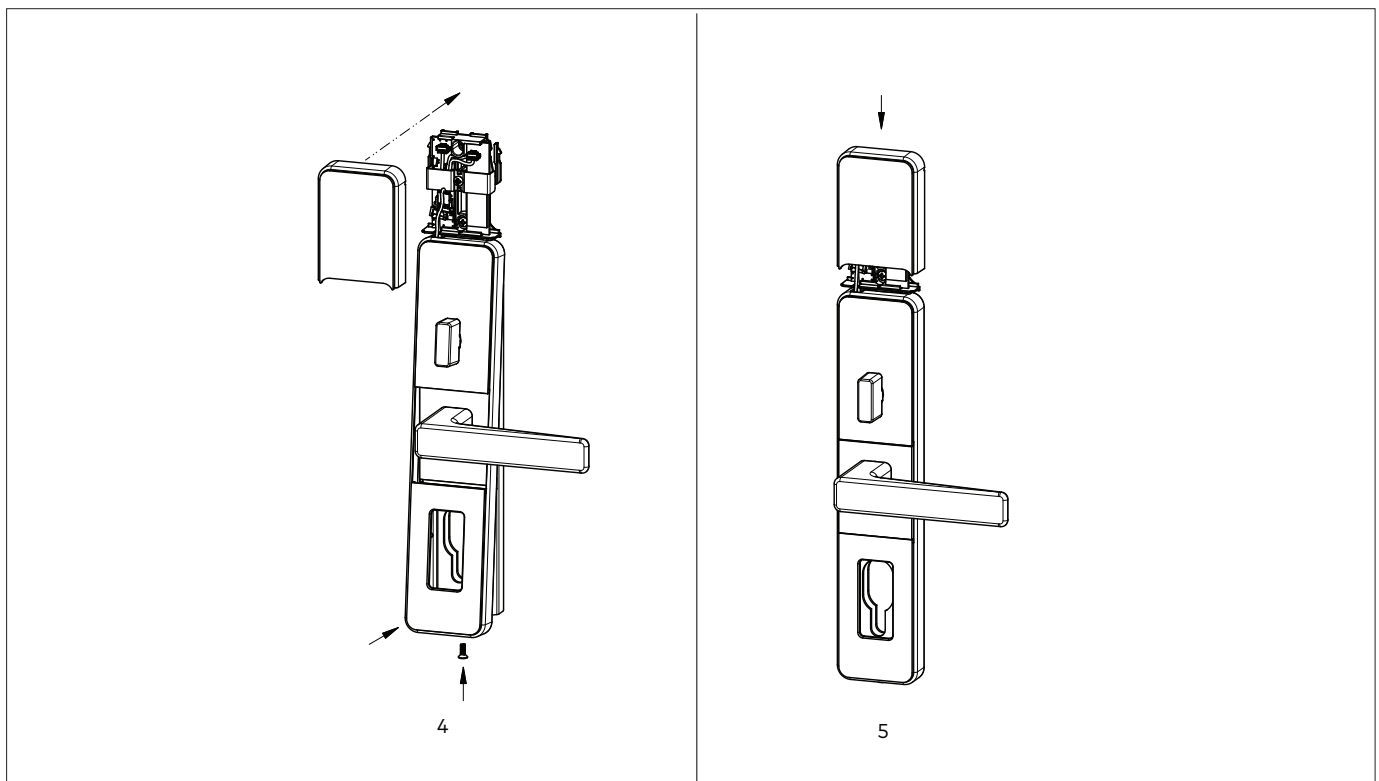
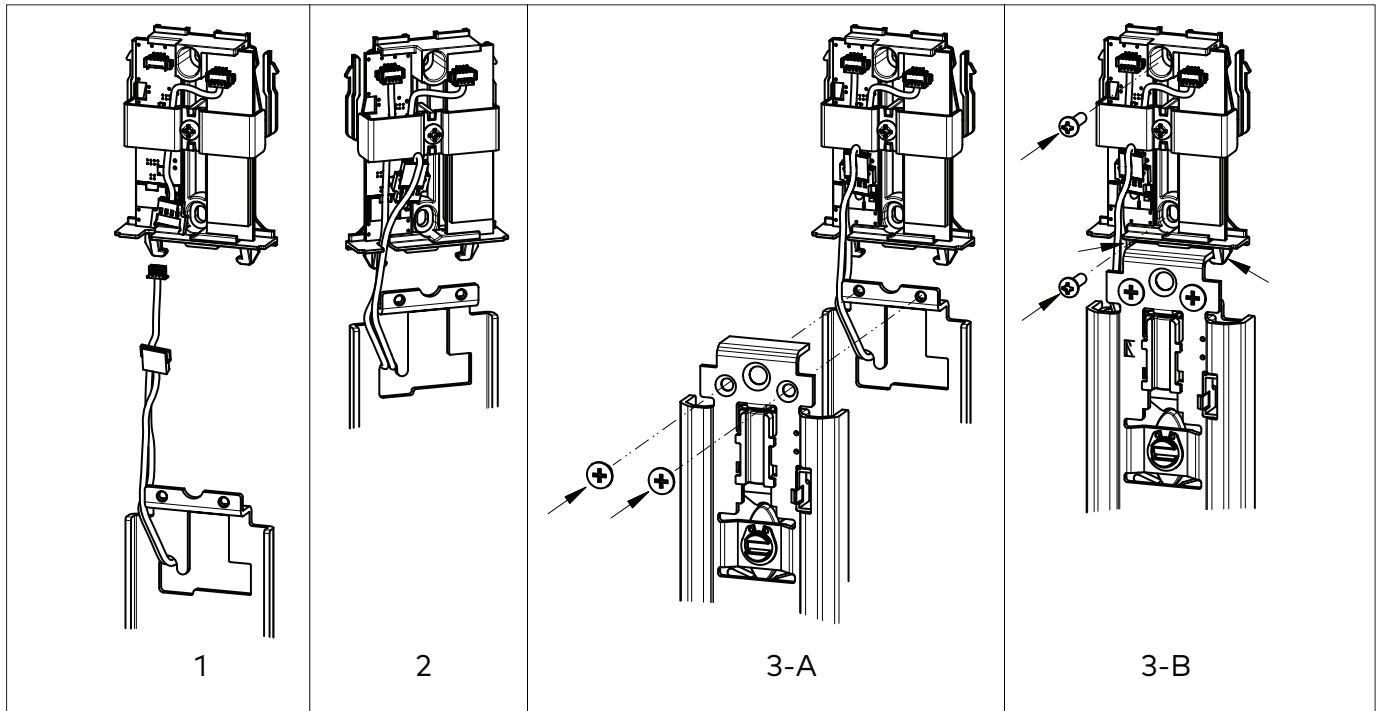


Annex C • Remove Battery Holder



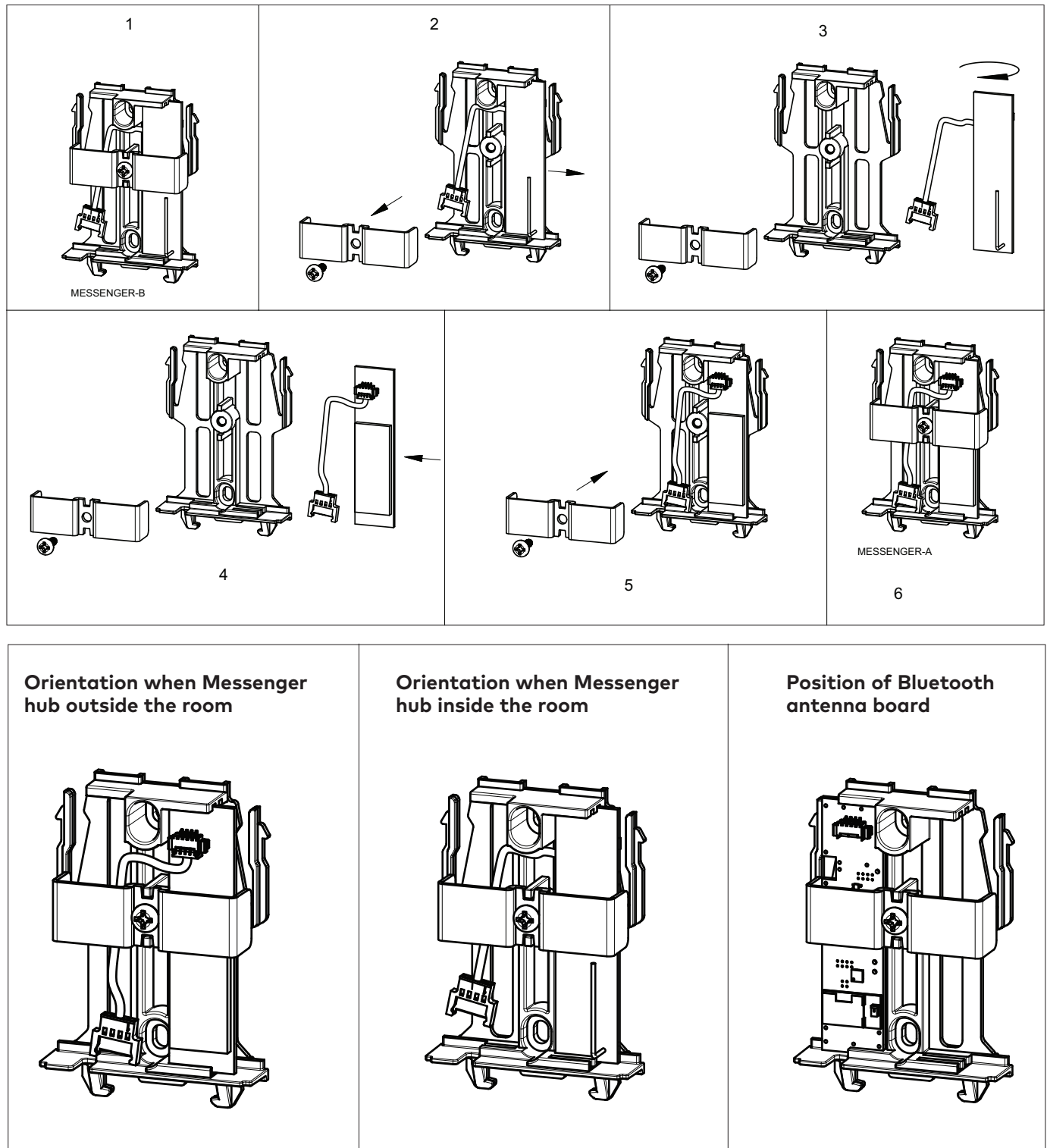
Annex D- Install Bluetooth and Messenger module

Battery must be disconnected before adding Bluetooth and Messenger module.
See Annex E for instructions of how to remove the cover from the module.

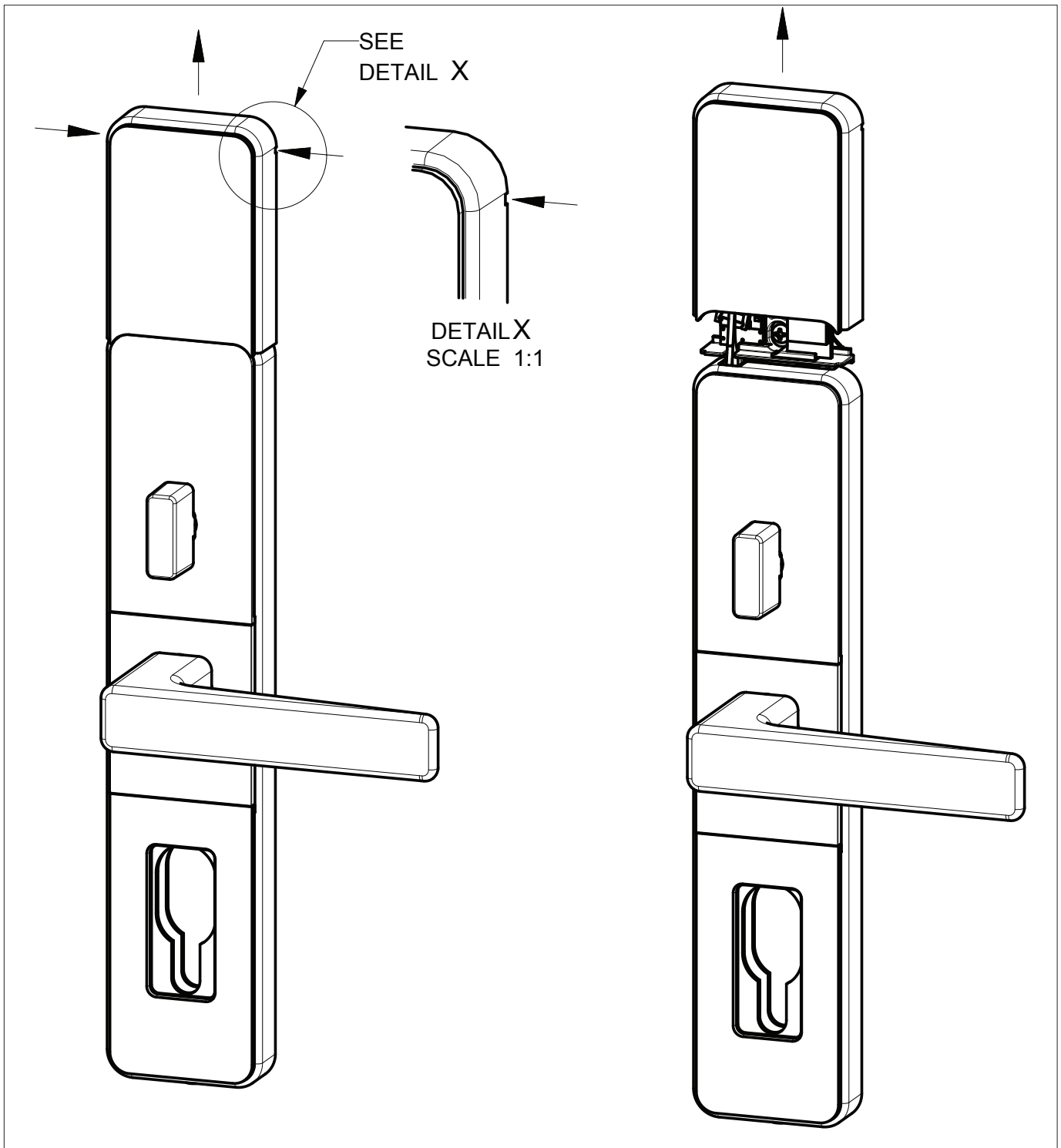


Annex D- Install Bluetooth and Messenger module

How to change orientation of Messenger antenna board. The lock is provided with orientation of board for Messenger hub outside the room.



Annex E • Remove cover of Bluetooth and Messenger module



dormakaba
Customer Services & Support
Ilco: 1.877.468.3555 / + 1.514.340.9025
Saflok: 1.800.999.6213 / + 1.248.837.3700

General Information:
www.kabalodging.com
Online Consumable Orders:
www.ilcostore.com
www.saflokstore.com
To access all of our easy steps, please
visit our Support Website:
www.kabalodgingsupport.com