

Confidant RFID Exit Device Operators

Installation instructions

PK3664-T - 2017 - 04

EN

dormakaba 

Installation steps

IMPORTANT

Wear Safety glasses before starting the installation process.

| | |
|---|----|
| 1. Tools | 3 |
| 2. Inventory | 4 |
| 3. Introduction and disclaimers | 5 |
| 4. Install spindle | 5 |
| 5. Attach and clamp spindle clip to spindle | 6 |
| 6. Install outside lever | 7 |
| 7. Prepare the door for the appropriate exit device. | 8 |
| 8. Install mortise (if applicable) | 8 |
| 9. Install lock on door | 8 |
| 10. Install lock on door (Bluetooth and/or Messenger Version) | 9 |
| 11. Plug battery holder | 11 |
| 12. Test lock functionality | 11 |
| 13. Program lock - with jack cable | 11 |
| 14. Install battery door | 12 |
| Annex A | 13 |
| Install outside housing with gasket | 13 |
| Annex B | 13 |
| Remove battery holder | 13 |

Drilling templates are in the center of the installation guide

Lever handle and card reader for fire exit hardware
Classified by Underwriters Laboratories Inc.®
Intended for installation on mortise, rim or vertical rod type devices.

Model: Confidant RFID
IC: 4652A-CRFID
FCCID: Q8SCONFIDANT-RFID

Regulatory Compliance: This device complies with Part 15 of the FCC Rules. Operation is subject to the following two conditions: (1) this device may not cause harmful interference, and (2) this device must accept any interference received, including interference that may cause undesired operation.

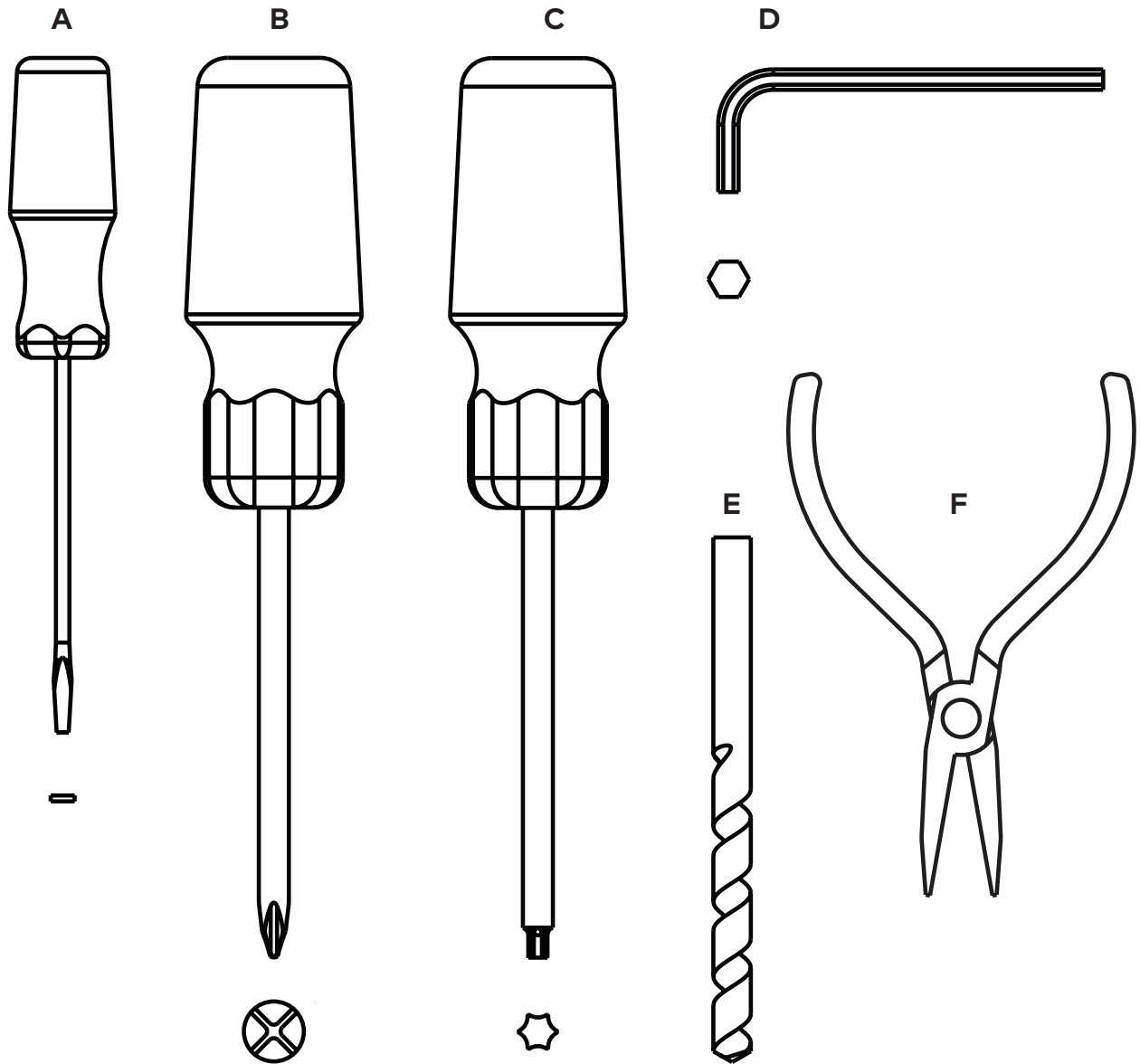
Any changes or modifications of this product, not approved by manufacturer will void the user's authority to operate the equipment.

This device complies with Industry Canada licence-exempt RSS standard(s). Operation is subject to the following two conditions: (1) this device may not cause interference, and (2) this device must accept any interference, including interference that may cause undesired operation of the device.

Le présent appareil est conforme aux CNR d'Industrie Canada applicables aux appareils radio exempts de licence. L'exploitation est autorisée aux deux conditions suivantes : (1) l'appareil ne doit pas produire de brouillage, et (2) l'utilisateur de l'appareil doit accepter tout brouillage radioélectrique subi, même si le brouillage est susceptible d'en compromettre le fonctionnement.

Made in Canada
©2017 Kaba Ilco Inc. All trademarks and registered trademarks are the property of their respective owners.

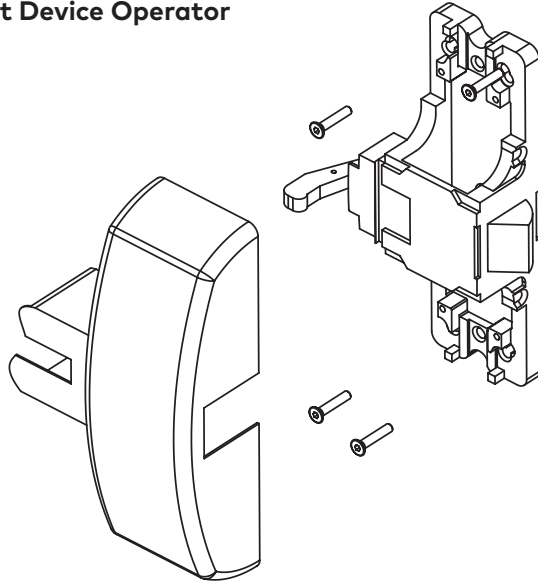
1- Tools



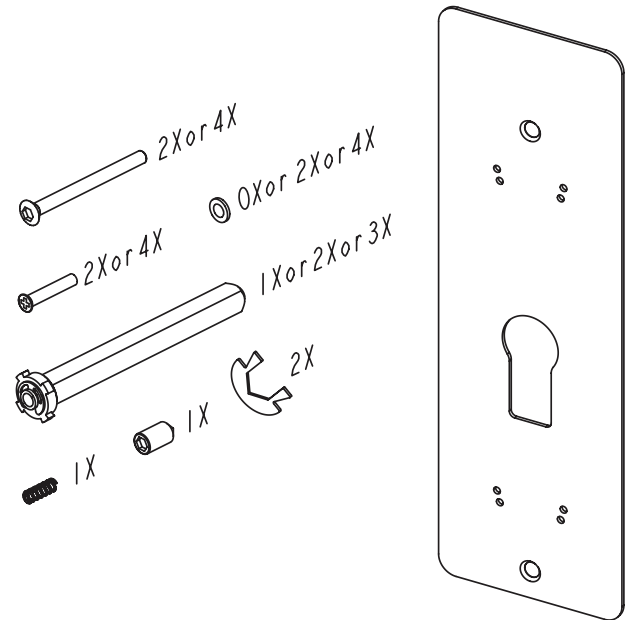
- A - Screw Driver Small Flat
- B - Screw Driver Phillips #2
- C - Screw Driver Torx T-20
- D - Hexagonal Key 3 mm
- E - 5/16" / 7/16" / 1" Drill Bit
- F - Needle Nose Pliers

2- Inventory

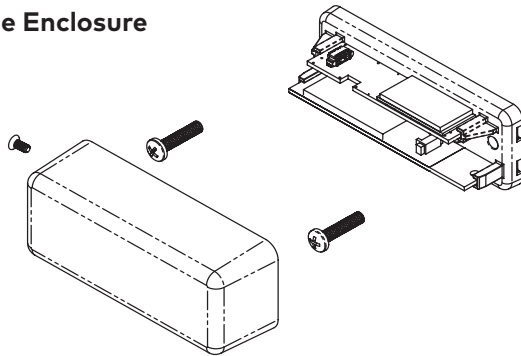
Exit Device Operator



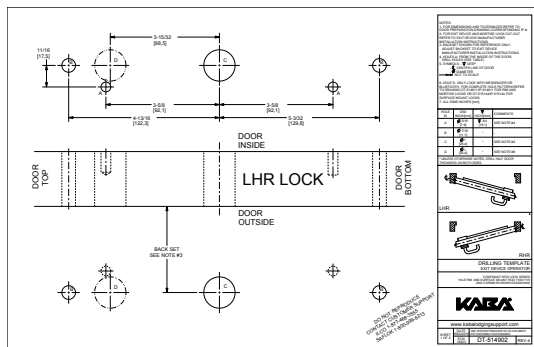
Hardware Bag



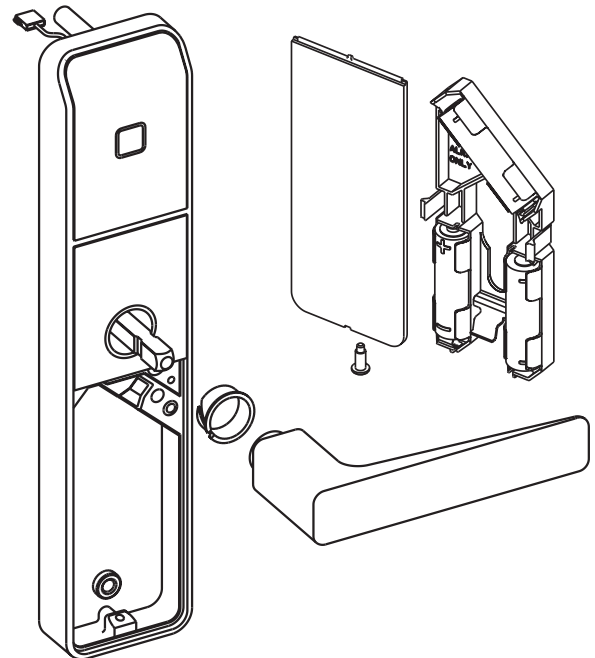
Double Enclosure



Drilling Template



Confidant RFID with battery holder



3- Introduction and disclaimers

IMPORTANT

These instructions are designed for use by maintenance professionals or lock installers who are familiar with common safety practices and competent to perform the steps described. dormakaba is not responsible for damage or malfunction due to incorrect installation, that may arise.

⚠ WARNING

Carefully inspect windows, doorframe, door, etc. to ensure that the recommended procedures will not cause damage. dormakaba's standard warranty does not cover damages caused by installation.

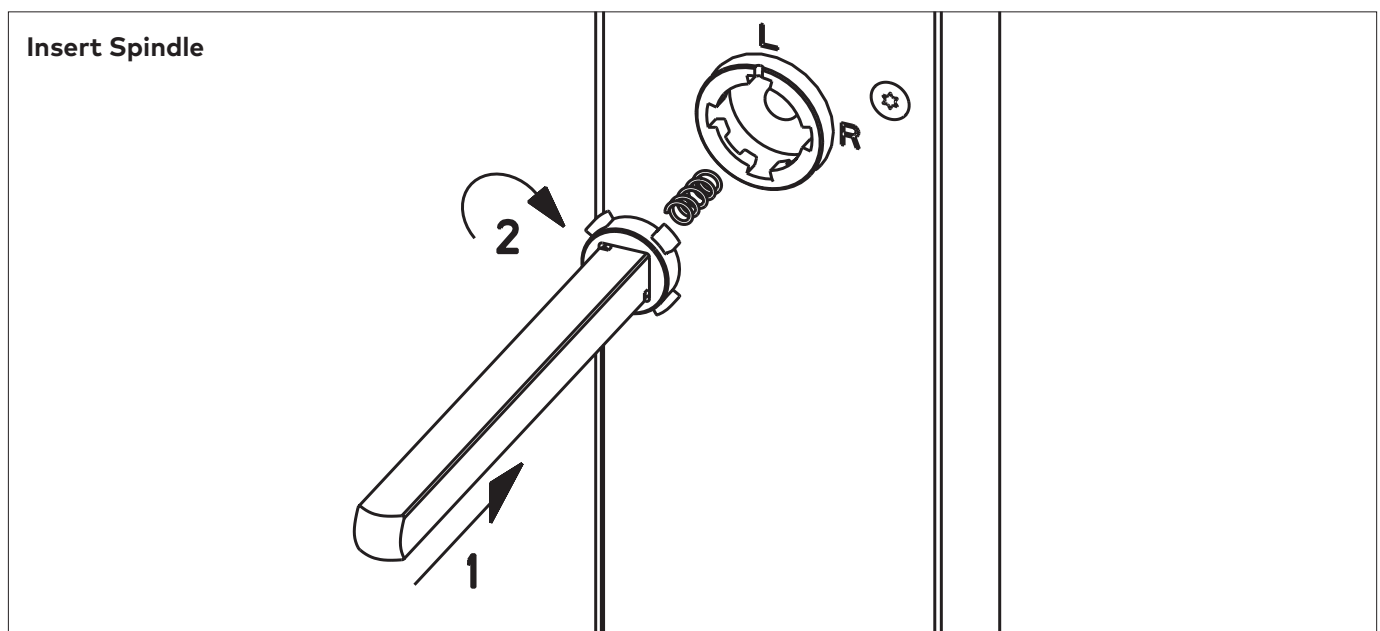
⚠ CAUTION

Wear safety glasses when making the holes.

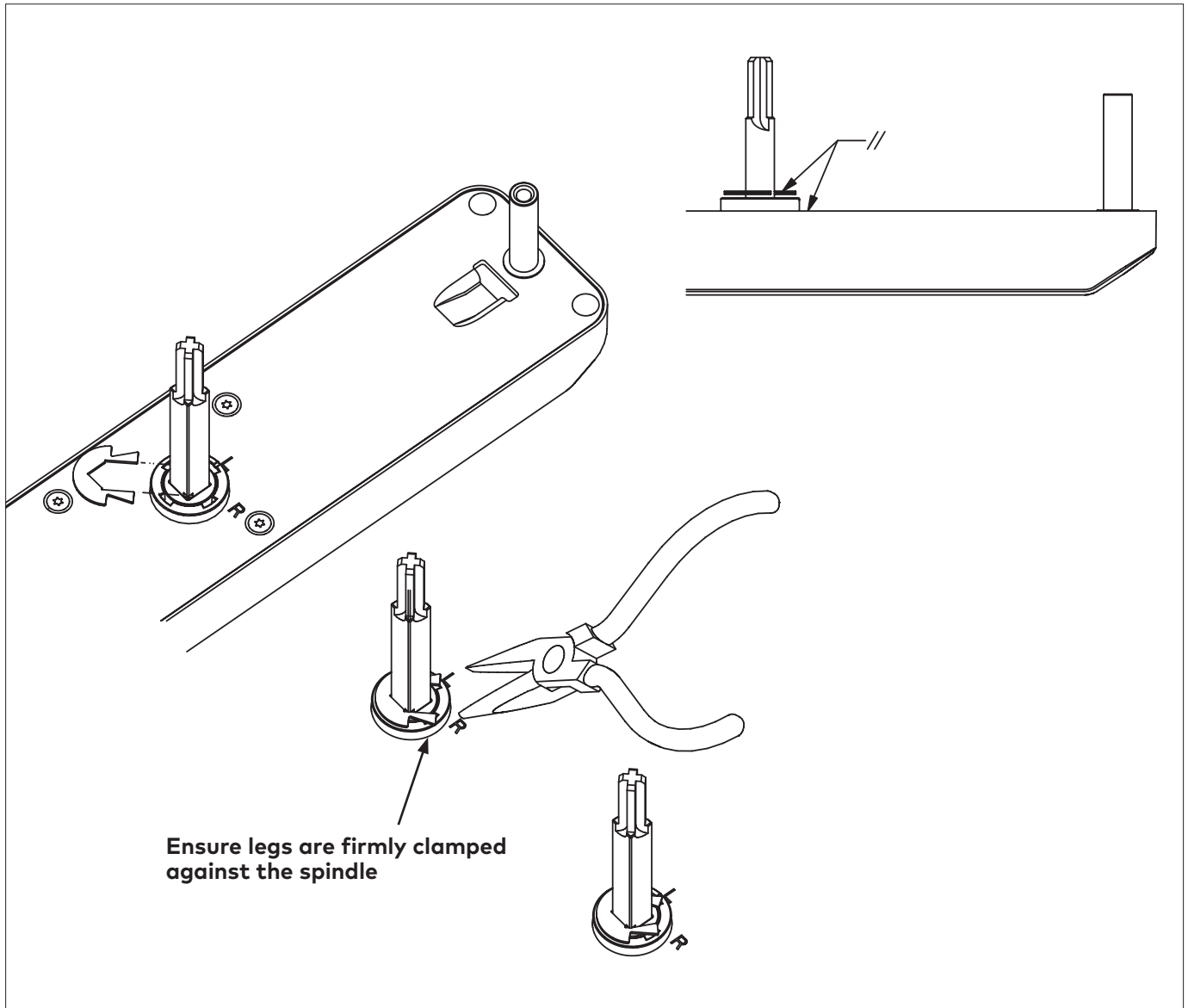
4- Install spindle

From hardware bag, choose the required spindle for the door thickness. Choose a spindle that engages by 1/8" minimum in the exit device chassis and that it is not too long to bottom-out against the exit device mechanism to jam the lock assembly, once it is tightened down.

For the spindle position see the table in the document named "spindle position"

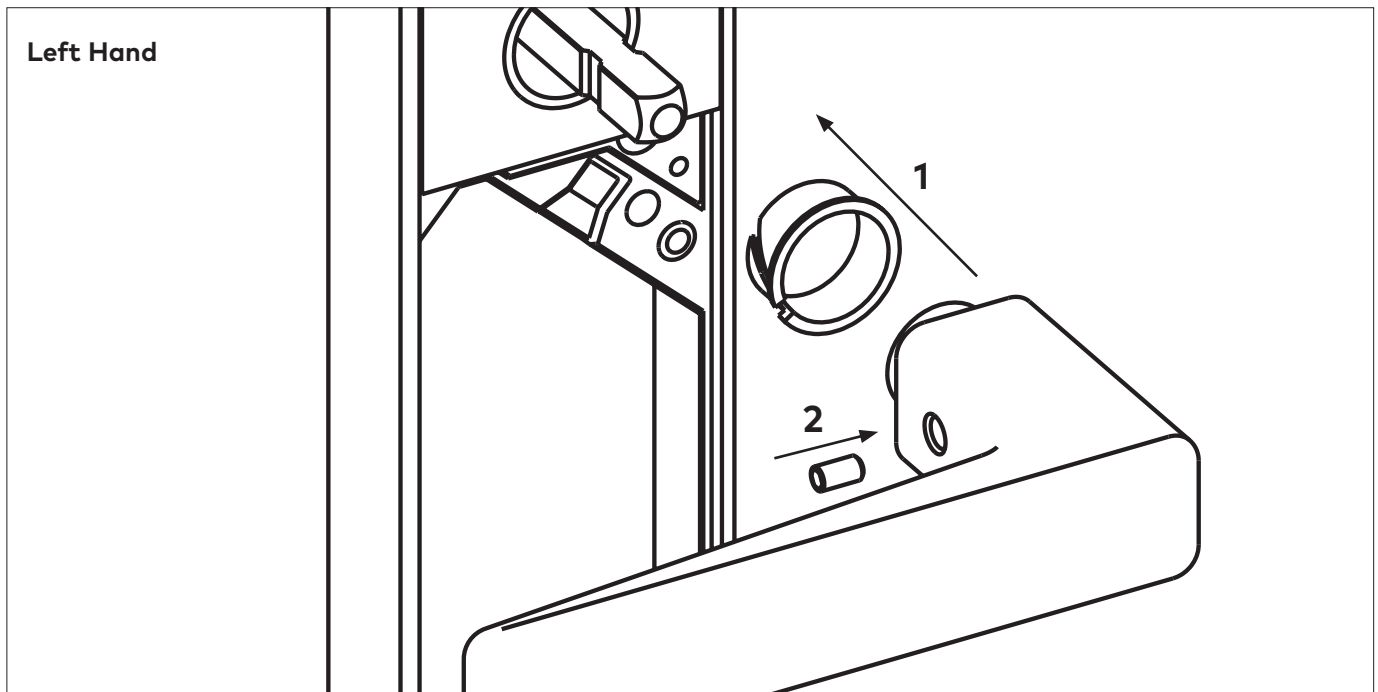


5- Attach and clamp spindle clip to spindle as shown



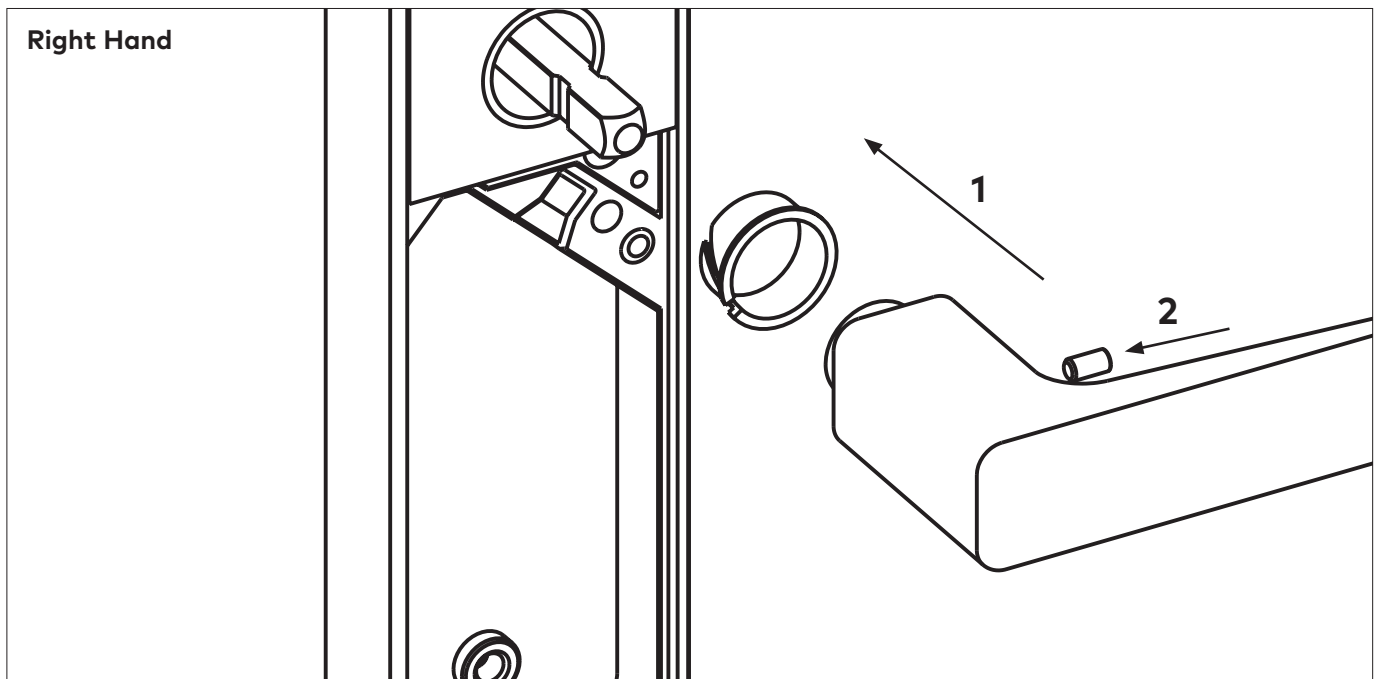
For the spindle position, see the table in the document named "spindle position"

6- Install outside lever

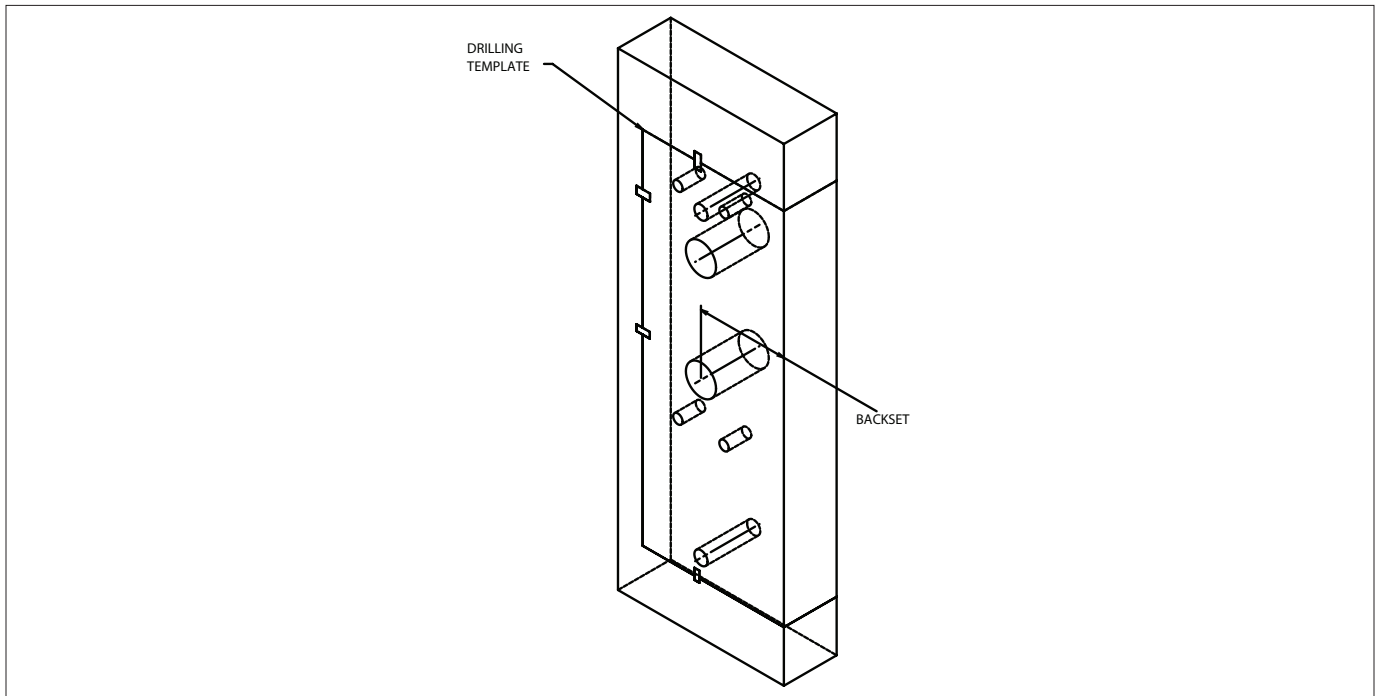


IMPORTANT

Hold down the outside lever against the outside housing while tightening the lever set screw.



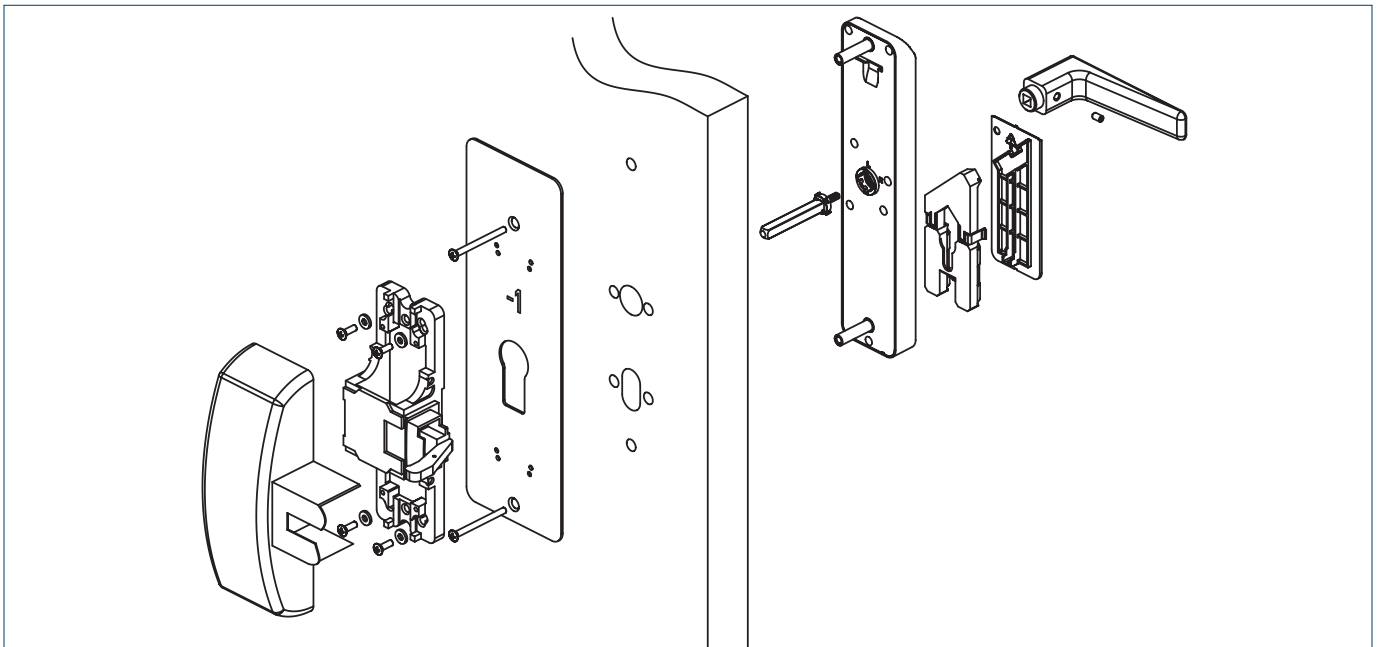
7- Prepare the door for the appropriate exit device



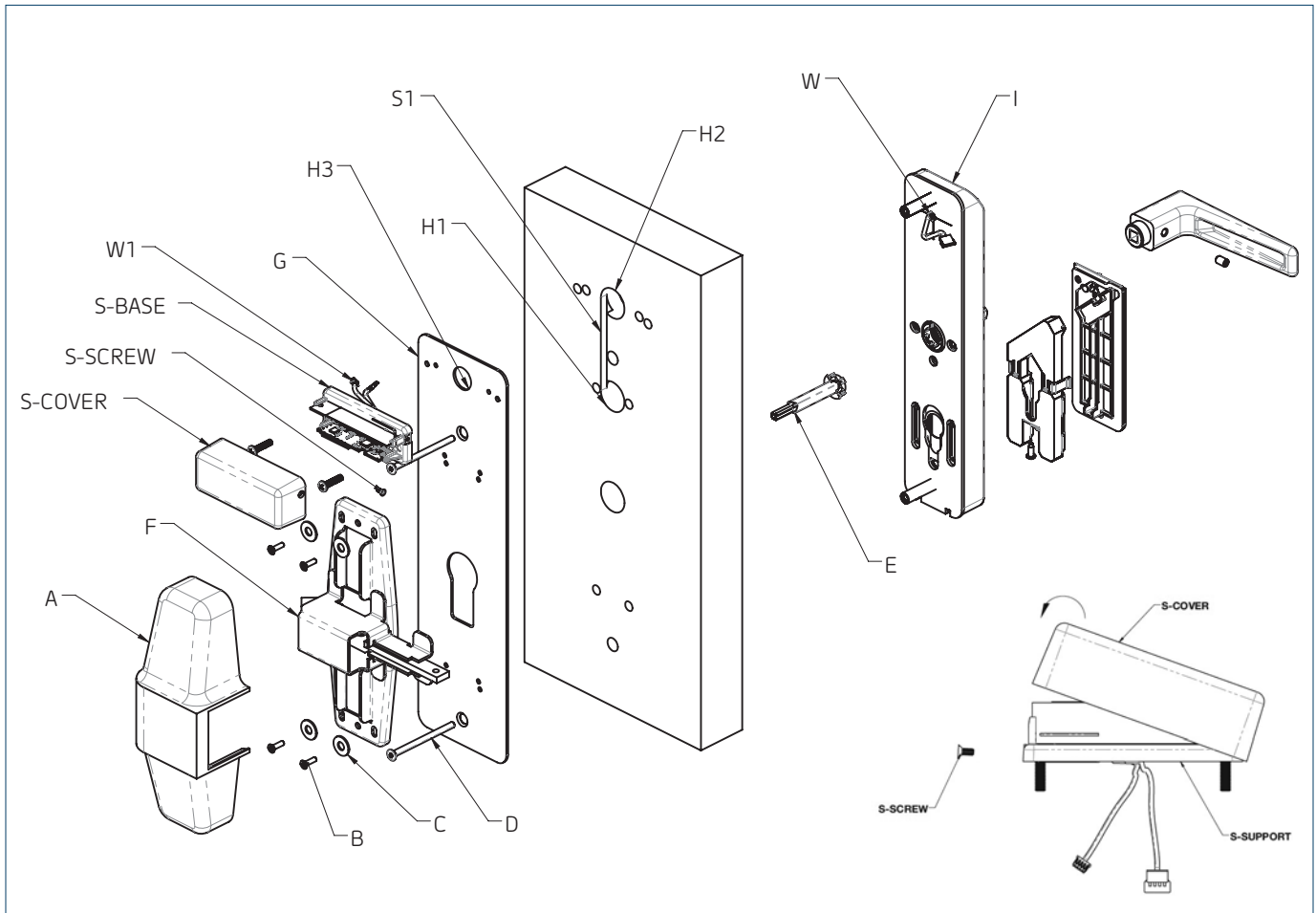
8- Install the mortise (If applicable)

For mortise exit devices, install the mortise according to the manufacturer's instructions.

9- Install lock on door



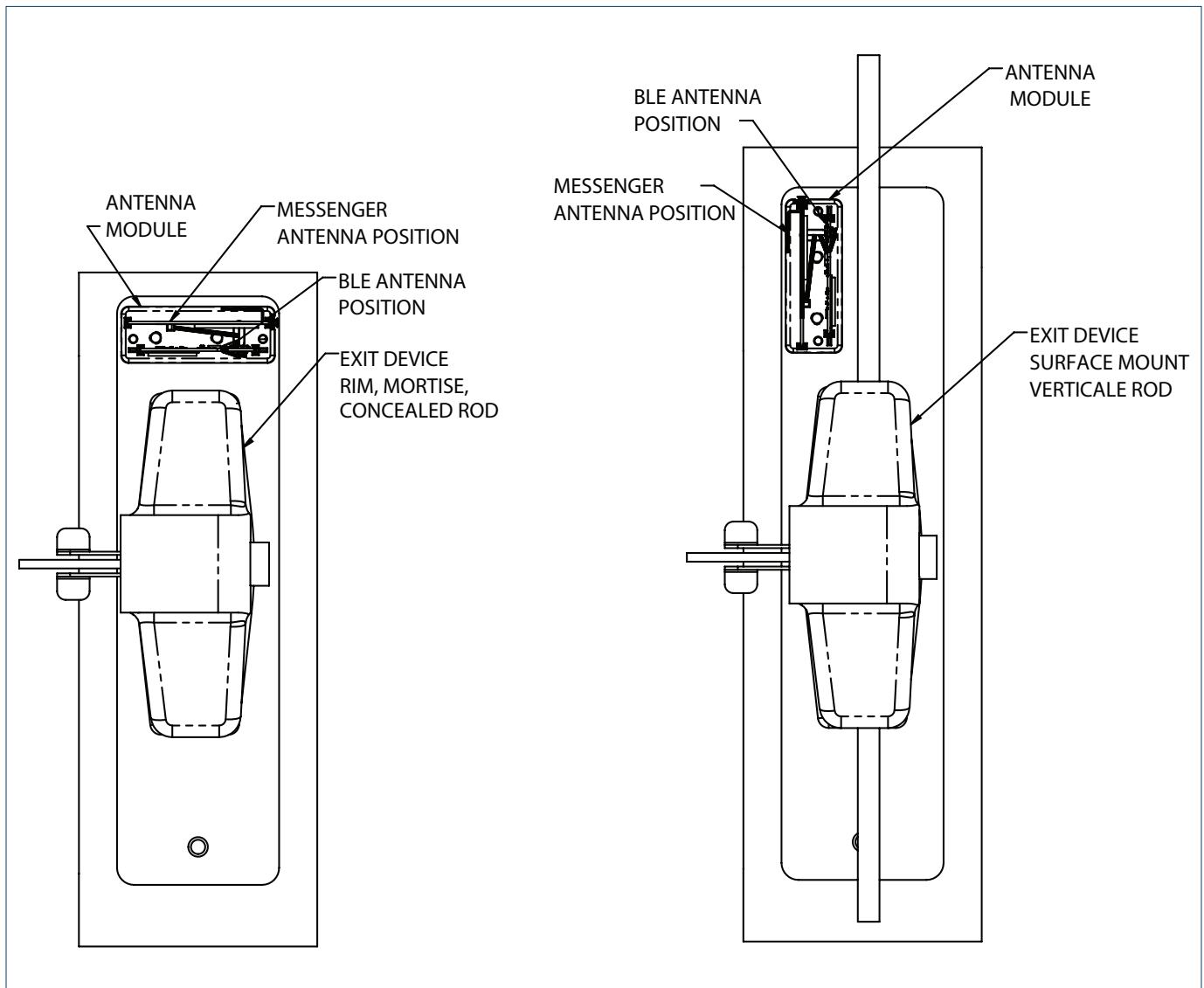
10- Install lock on door (Bluetooth and/or Messenger Version)



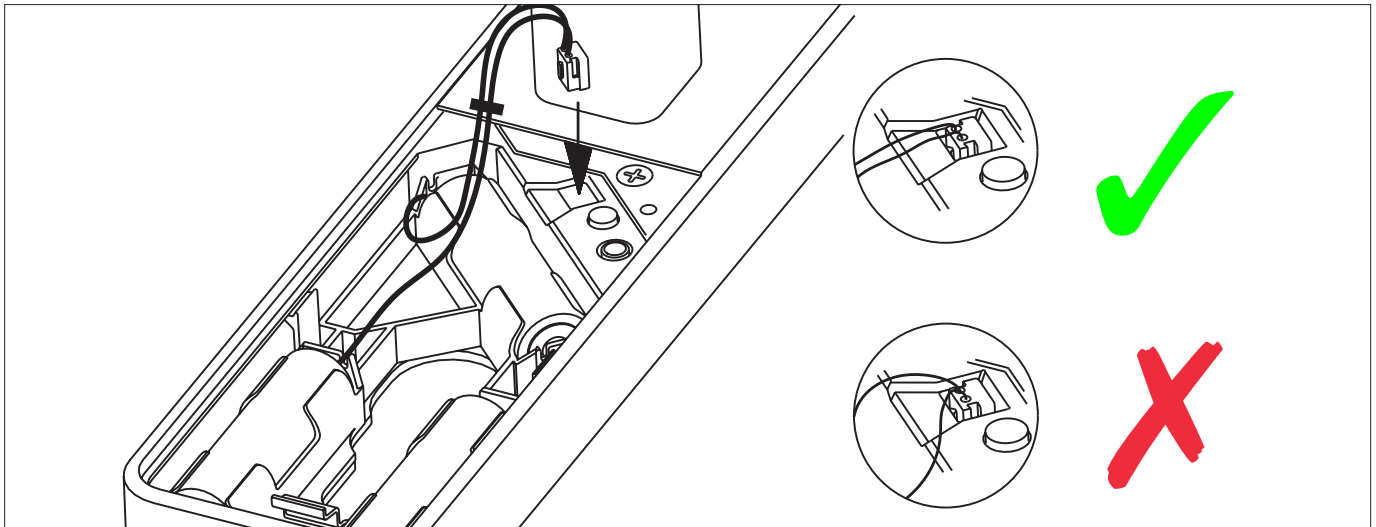
- A Pass wires (W) through the hole (H1). For the hollow doors, the wires shall pass inside the door to come out from the hole (H2).
- B Place the outside housing (I) on the door.
- C Attach adaptor plate (G) to the lock (I) using 2 flat head screw (D) (12-24unc) (for solid doors, make sure that the wires are in the groove (S1).
- D Attach the Exit Device chassis (F) to the Adaptor Plate (G) using 2 screws or 4 screws (B) depending on the Exit Device. For Detex only, use 2 or 4 Flat washers (C).
- E Make sure the lock and the Exit Device are well aligned and then tighten screws.
- F Connect wires (W) to (W1) and put the excess cables and connectors in the hole (H2) on the door.
- G Attach the base (S-base) to the adaptor plate (G) with the two screws. Put the cover (S-cover) as shown, and put the screw (S-screw).
- H Follow the manufacturer's instructions to complete the installation of the exit device and the appropriate strike

10- Install lock on door

(Bluetooth and/or Messenger Version) (Suite)



11- Plug battery holder



12- Test lock functionality

Make Sure Room Door is Open

A - Present Test Keycard

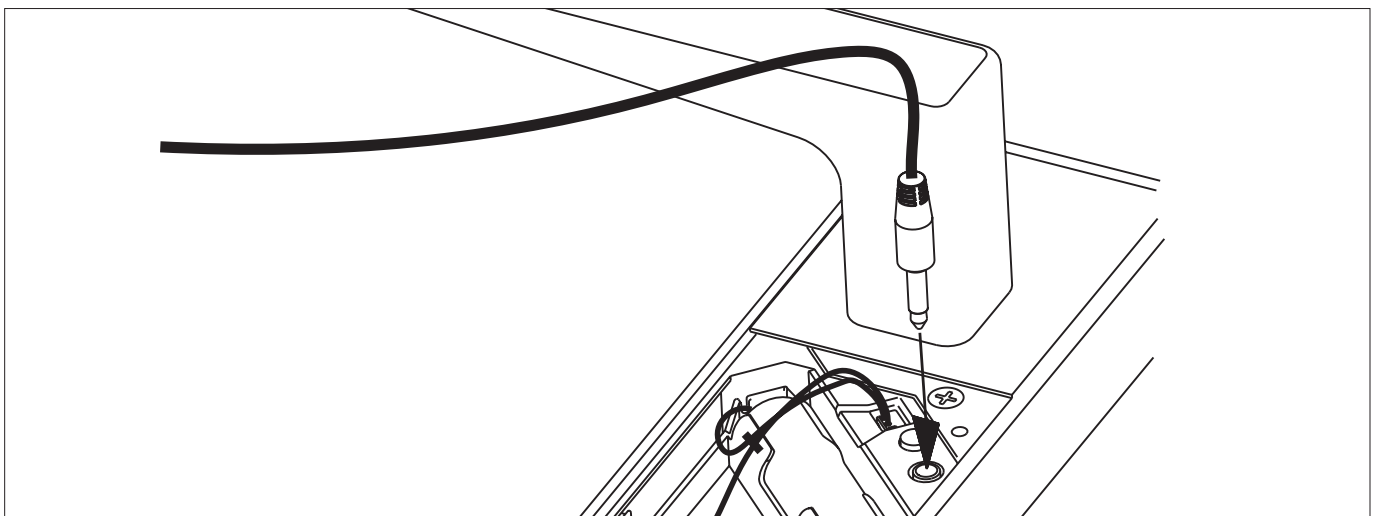
B - Check Green & Red Lights Flash

C - Rotate Outside Lever to Check Bolt or Rod Retraction

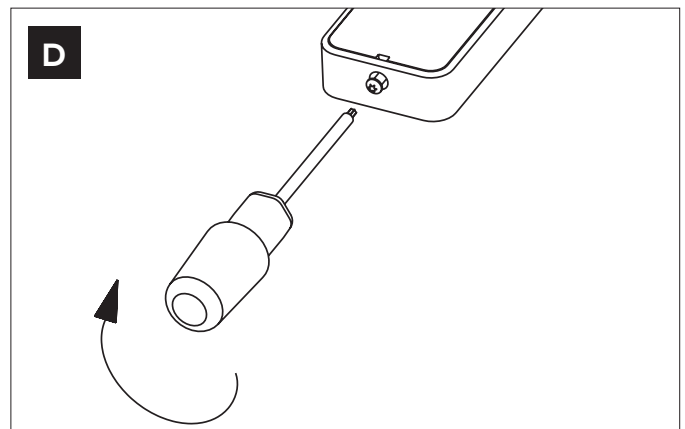
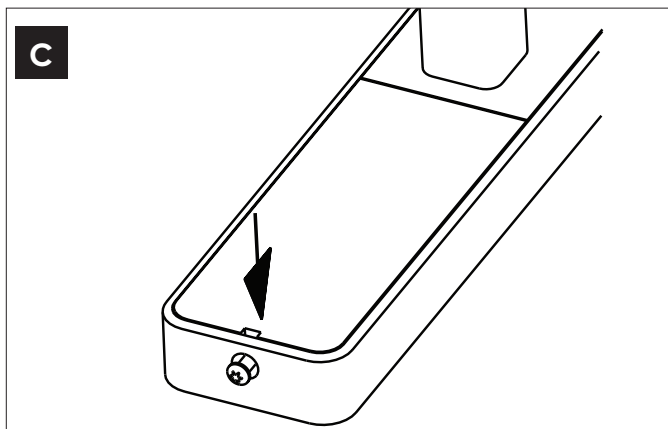
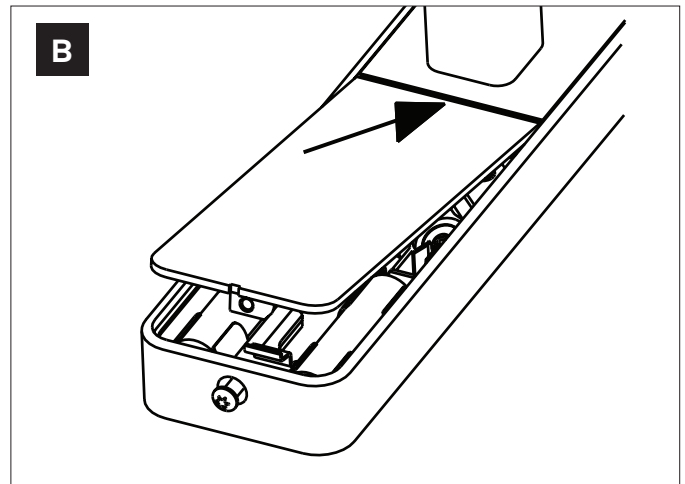
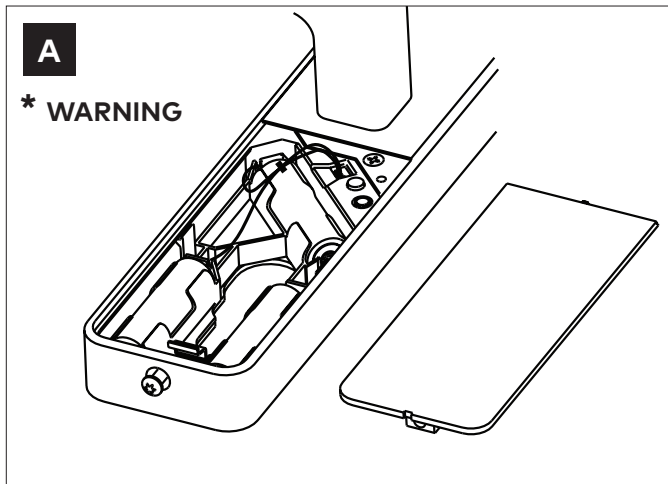
D - Release Outside Lever, Should Move Freely

E - Activate Panic Bar to Check Bolt or Rod Retraction

13- Program lock - With Jack Cable



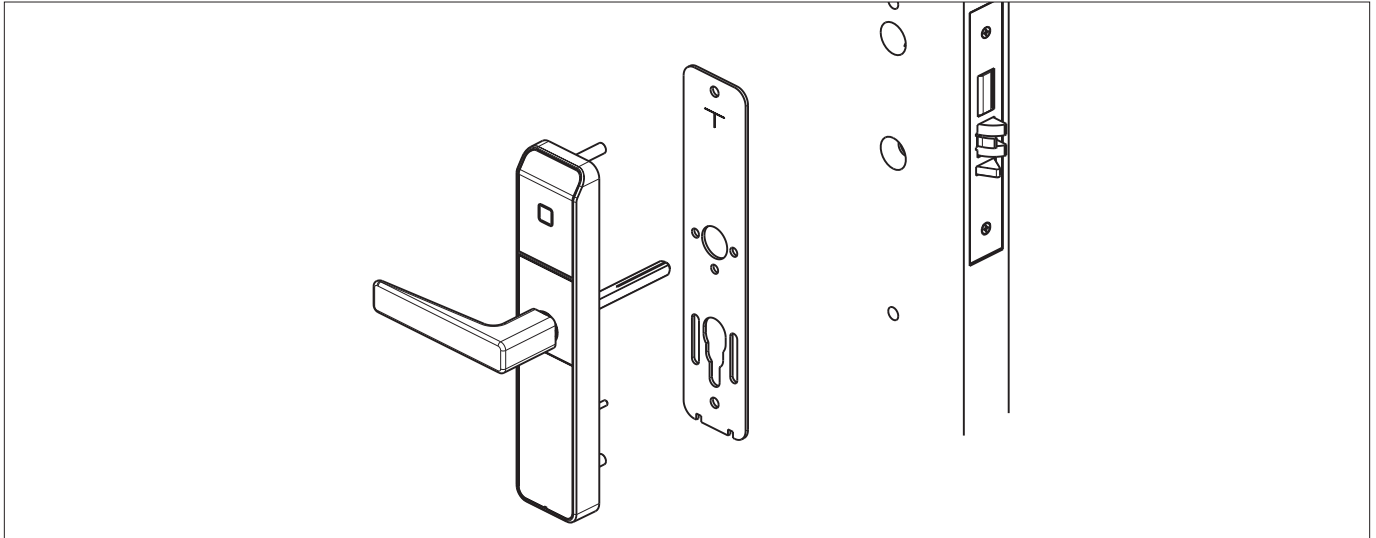
14- Install battery door



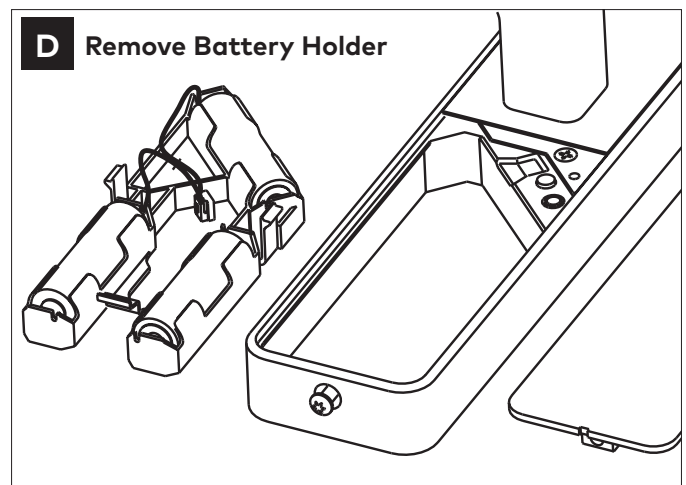
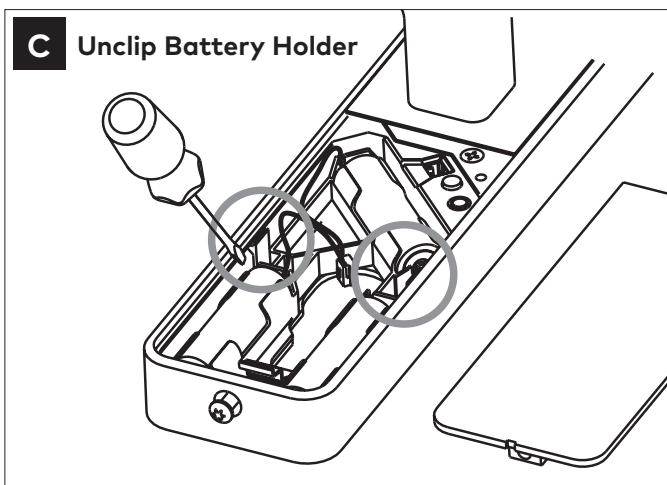
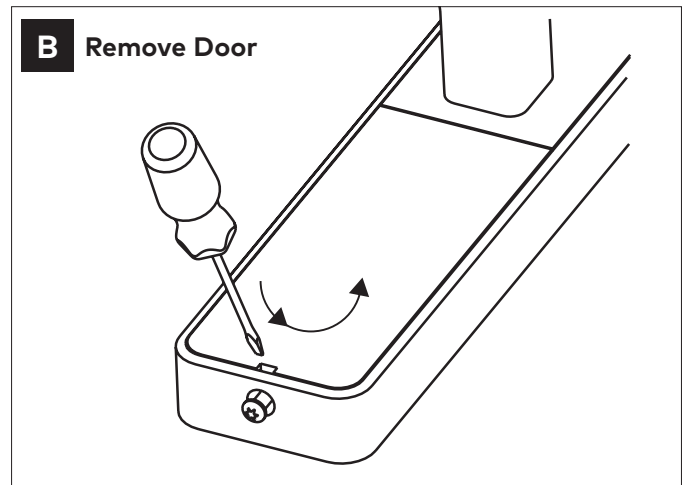
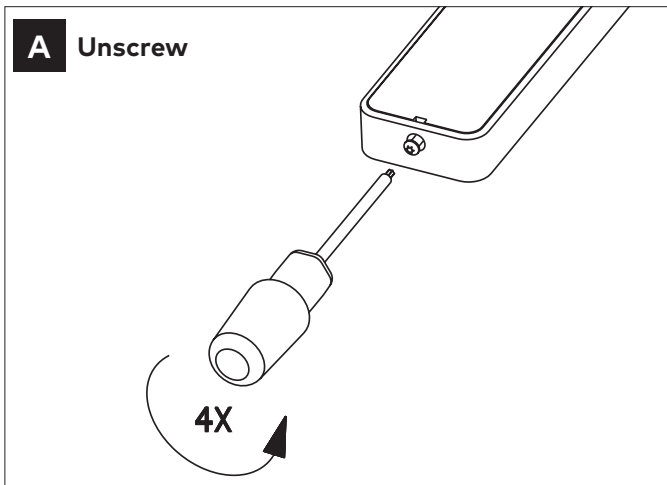
WARNING

For security reasons, lock must be programmed BEFORE installing the battery door. Every time the battery door is removed pass an emergency card or connect lock to a dormakaba Programming Unit to reset the tamper alarm. Audit information is not affected.

Annex A • Install outside housing with gasket (Exterior and ocean front versions)



Annex B • Remove battery holder





dormakaba
Customer Services & Support
Ilco: 1.877.468.3555 / + 1.514.340.9025
Saflok: 1.800.999.6213 / + 1.248.837.3700

General information:
www.kabalodging.com
Online consumable orders:
www.ilcostore.com
www.saflokstore.com
To access all of our easy steps, please
visit our support website:
www.kabalodgingsupport.com