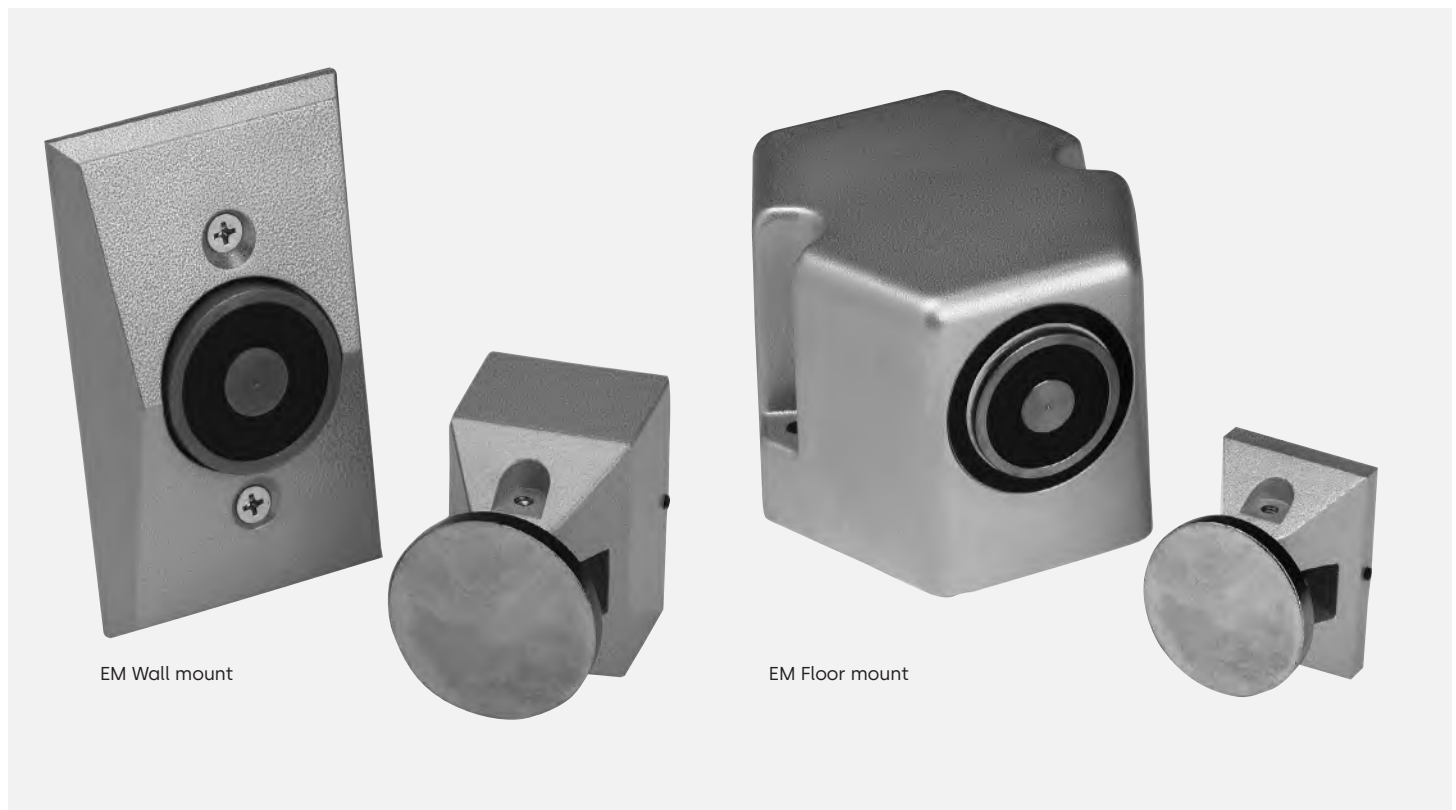


EM Series

Electromagnetic door holders



EM Wall mount

EM Floor mount

Applications

The dormakaba EM Series electromagnetic door holders with dual voltage capability and ball swivel adjustable catch plates provide versatility to cover a wide range of application requirements. Add-on catch plate extensions further enhance its flexibility.

Listings & approvals:

- ANSI A156.15 Grade 1.
- U.L. and C.U.L. listed.
- CSFM, M.E.A. and FM approved.

Features and functions

- Full range of products to meet typical market requirements.
- Secure, adjustable, swivel ball catch plate.
- Offered exclusively in finishes that meet market demands.
- Dual voltage.
- Low power consumption — 0.015 A (0.030 for EM502).
- No maintenance required.
- Vandal-resistant.

Optional features

- Adjustable add-on extensions.
- Modular components available to revise model for field conditions.
- Screw pack kits available

Finishes

Standard powder coated finishes

- Aluminum: 689
- Bronze: 695 (Dark Duranodic)

Custom painted finish

- Gold: 696 (Satin)

Range of door projections:

- Standard projection from 1-7/8" (48 mm) to 6-7/16" (164 mm).
- Add-on extensions from 1-1/2" (38 mm) to 12" (305 mm).

Mounting options:

Models available to mount EM Series:

- Wall mount, varying projections
- Single floor mount
- Double floor mount

Special application assistance:

Please contact our Technical Services team at 800-523-8483 if you have any questions or for assistance in developing a custom application.

ANSI A156.15 Grade 1 selector chart

Models	ANSI Type		
	C00011	C00021	C00031
EM504	•	-	-
EM505	•	-	-
EM508	•	-	-
EM509	•	-	-
EM501	-	•	-
EM502	-	-	•

Any questions? We would be happy to advise you.
Contact us at: 1-800-523-8483