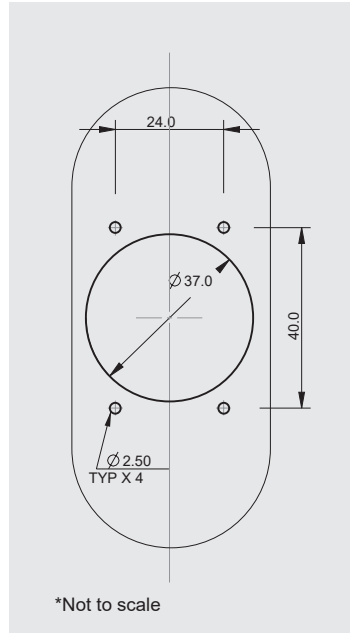


**PK Series**

Keyswitch Installation Instructions

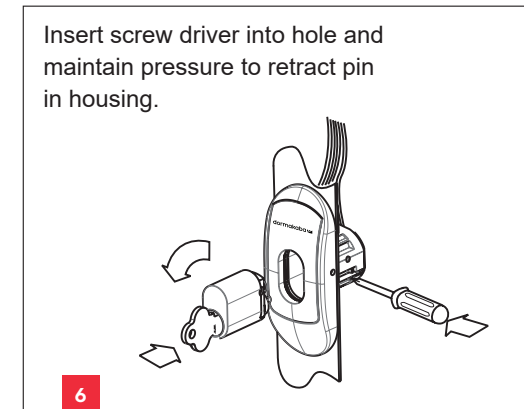
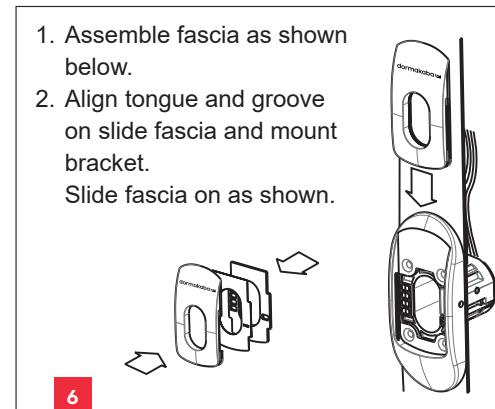
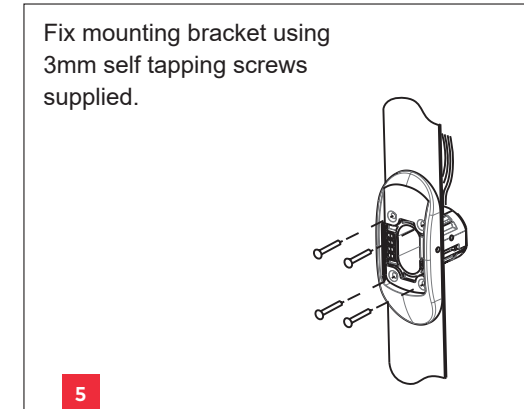
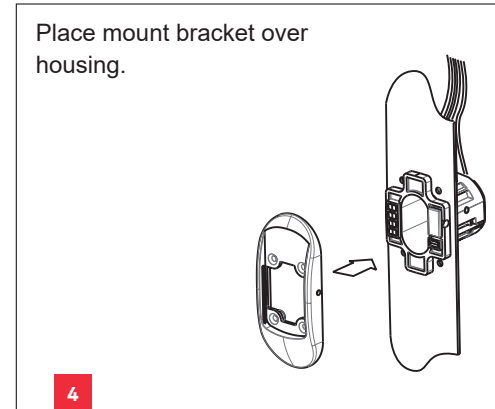
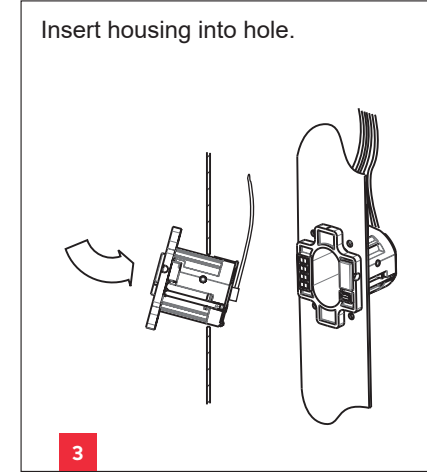
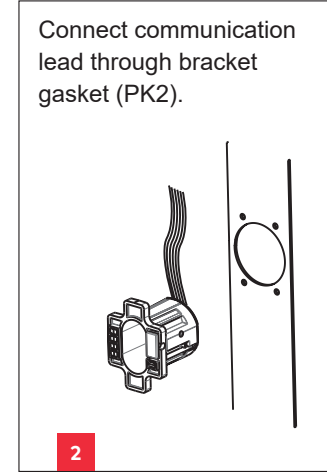
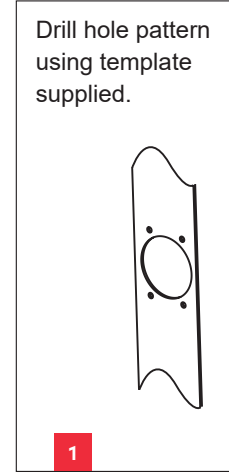
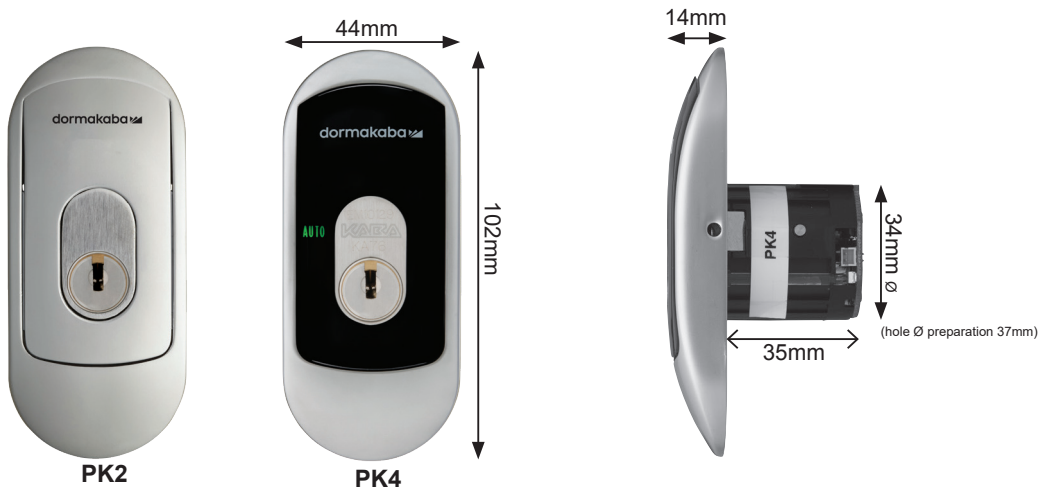
**ES 200 Connection (Outside of Australia)**

PIN	COLOUR	PK2 OUTPUT	PK4 OUTPUT	PK5 OUTPUT
Pin 1	Brown	Terminal 9	Terminal 9	Terminal 9
Pin 2	Green	N/A	Terminal 2	Terminal 2
Pin 3	Red	N/A	Terminal 1	Terminal 1
Pin 4	Blue	Terminal 7	Terminal 3	Terminal 3
Pin 5	White	Terminal 7	Terminal 5	Terminal 5
Pin 6	Orange	N/A	N/A	Terminal 4
Pin 7	Grey	N/A	N/A	N/A
Pin 8	Black	Terminal 8	Terminal 8	Terminal 8



**ED 100 and ED 250 Connection**

PIN	COLOUR	PK4 OUTPUT	PK2 OUTPUT
Pin 1	Brown	Terminal 1	Terminal 1
Pin 2	Green	Terminal 31	N/A
Pin 3	Red	Terminal 30	N/A
Pin 4	Blue	Terminal 32	Terminal 35
Pin 5	White	Terminal 34	Terminal 35
Pin 6	Orange	N/A	N/A
Pin 7	Grey	N/A	N/A
Pin 8	Black	Terminal 3	Terminal 3



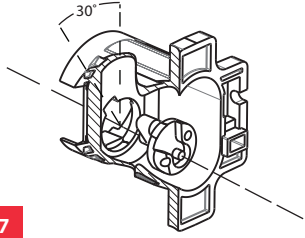
**dormakaba Australia**  
 Head Office  
 12-13 Dansu Court  
 Hallam VIC 3803  
 T 1800 675 411  
 info.au@dormakaba.com  
 www.dormakaba.com.au

**dormakaba New Zealand**  
 Head Office  
 Building P, 61-69 Patiki Road  
 Avondale, Auckland 1026  
 T: 0800 436 762  
 info.nz@dormakaba.com  
 www.dormakaba.co.nz

# PK Series

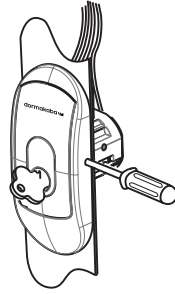
## Keyswitch Installation Instructions

Insert barrel into housing and sweep key approx 30° anti-clockwise while maintaining light forward pressure until cam and aperture on housing align.



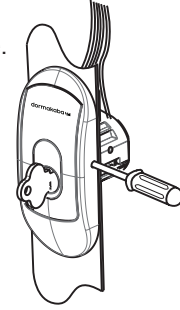
7

Once aperture and cam are aligned, insert barrel until it is flush with fascia.



8

Release key (It should return to a vertical position) Remove screw driver. Ready for use.



9

Note: a second fascia is included that can be fitted if access from LHS is required to retract pin.

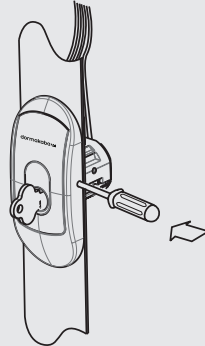
## Barrel Removal

Insert key.



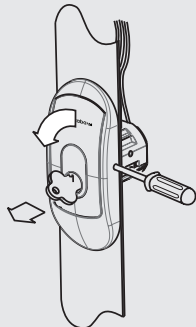
1

Insert screw driver into hole on side of bracket. Apply pressure to disengage the retaining pin.

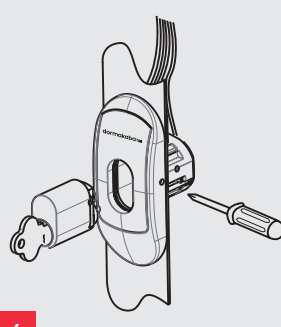


2

While applying pressure to the retaining pin rotate the key anti-clockwise 30° applying light outwards pressure. When the keyways align (see step 8 of installation guide) withdraw the barrel.



3



4

The dormakaba Prestige Key switch range offers a unique stylish switch that can be fitted to most automatic door systems.

PIN	COLOUR	PK1 OUTPUT	PK2 OUTPUT	PK3 OUTPUT	PK4 OUTPUT	PK5 OUTPUT
Pin 1	Brown	+12V / 24 VDC	+12V / 24 VDC	+12V / 24 VDC	+12V / 24 VDC	+12V / 24 VDC
Pin 2	Green	ON	NOT USED	AUTOMATIC	AUTOMATIC	AUTOMATIC
Pin 3	Red	OFF	NOT USED	LOCK	LOCK	LOCK
Pin 4	Blue	NOT USED	OPEN	NOT USED	EXIT	EXIT
Pin 5	White	NOT USED	OPEN	OPEN	OPEN	OPEN
Pin 6	Orange	NOT USED	NOT USED	NOT USED	NOT USED	PARTIAL OPEN
Pin 7	Grey	NOT USED	NOT USED	NOT USED	NOT USED	NOT USED
Pin 8	Black	- VDC / GND	- VDC / GND	- VDC / GND	- VDC / GND	- VDC / GND

## Mode Description

### Lock / Off

The door will close and lock automatically. Entry or Exit from the building is via the internal Exit Push Button or external Key Switch (spring return). If an electric lock system is not fitted then the door will close and turn off so as to be manually locked. The door can also be moved manually in the mode for cleaning and maintenance.

approached from the internal side but not from the external side. This mode is used to allow people to exit the building after hours or at closing time. If an electric lock system is fitted the door will also lock automatically when in the closed position.

### Open

The door will drive to the fully open position, this mode may be used whilst moving equipment in and out of the building.

### Automatic

The door will open and close automatically when the motion sensors are activated

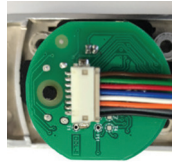
### Partial

The door will open to a reduced opening distance.

### Exit

The door will automatically open when

## 8 Way Connector

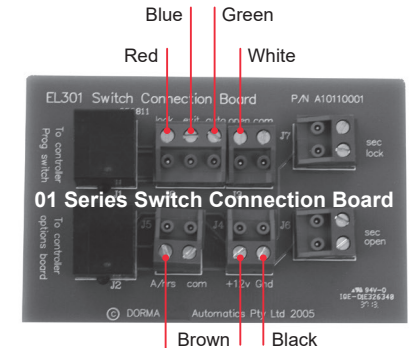


Pin 1

Pin 8

## 01 Series Connection via Switch Connection Board

PIN	COLOUR	PK2 OUTPUT	PK4 OUTPUT
Pin 1	Brown	+12V / 24 VDC	+12V / 24 VDC
Pin 2	Green	NOT USED	AUTOMATIC
Pin 3	Red	NOT USED	LOCK
Pin 4	Blue	A/HRS	EXIT
Pin 5	White	A/HRS	OPEN
Pin 6	Orange	NOT USED	NOT USED
Pin 7	Grey	NOT USED	NOT USED
Pin 8	Black	- VDC / GND	- VDC / GND



Note: If an option board is fitted, then +12VDC and GND will need to be terminated on the option board.

## HD 200 and ES 200 Connection (Australia)

PIN	COLOUR	PK4 OUTPUT	PK2 OUTPUT
Pin 1	Brown	Lock Board	+24 VDC
Pin 2	Green	Lock Board	- AUTO INPUT
Pin 3	Red	Lock Board	- LOCK INPUT
Pin 4	Blue	Lock Board	- EXIT INPUT
Pin 5	White	Lock Board	- OPEN INPUT
Pin 6	Orange	NOT USED	NOT USED
Pin 7	Grey	NOT USED	NOT USED
Pin 8	Black	Lock Board	- COM

(PK2) Blue + White