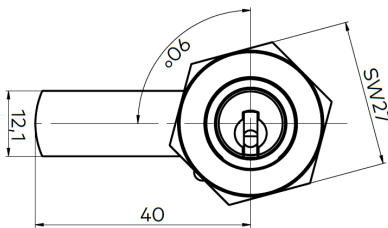
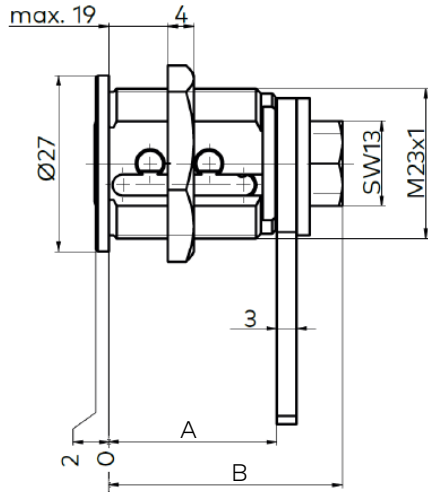
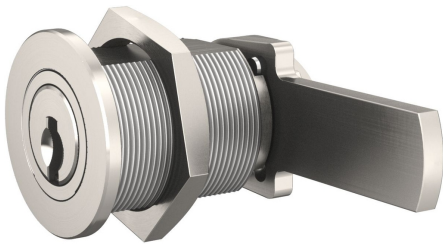


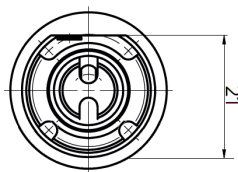
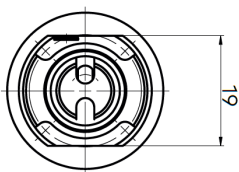
# Camlock Cylinder

## BMZ 1031 / 1061, BMZ 1031A / 1061A

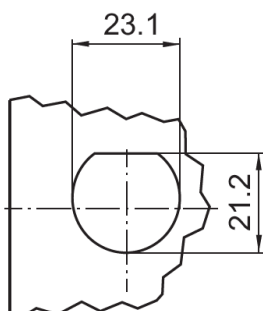


**Kaba 20**  
2 Flats

**quattro / expert**  
1 Flat



**Installation Hole**



### Application:

High-security camlocks to suit a wide variety of applications and provide high levels of physical security combined with market-leading key control procedures. dormakaba's camlock range includes single and two key entry versions, multiple opening/closing paths, as well as offering a selection of optional cam designs and installation accessories.

### Specification:

- Housing supplied in solid natural brass with nickel plating
- Stainless steel cam
- Nickel-plated brass hex fastening nut
- Reversible key made from nickel silver
- Type 1031 Key retraction when locked only, key rotation 90°
- Type 1061 Key retraction when locked and opened, key rotation 360°
- Kaba 20 Cylinder is supplied with 2 flats on the housings, quattro & expert versions supplied with 1 flat (see diagram below)

### Included with the cylinder:

- Standard cam 1061-6ZK (other configurations available - see Camlock accessories document - PDS-036-01)
- 1 fastening nut - M23 / 27 hex
- Installation and Maintenance Instructions

### Available Patented Systems:

- Kaba 20 (K37)
- quattro Plus (K85)
- expert Plus (K83)

### Available Legacy Systems:

- Kaba 20 (K231)
- quattro Plus (K58)
- expert (K56)

### Cylinder Measurements: 1031 / 1061:

- Distance to cam - 25.5mm (A)
- Overall length - 35.5mm (B)

### 1031A / 1061A:

- Distance to cam - 30mm (A)
- Overall length - 40mm (B)