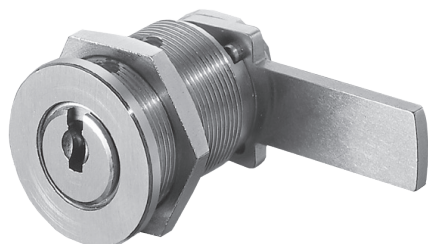


Camlock Cylinders

BMZ.1031/1061, BMZ.1031A/1061A



Application:

Camlock cylinder with hex nut fastening, suitable for installation in wood and metal. Cams are available for left and right doors as well as for drawers. (Standard configuration: closing path A, see "Cam Settings" page 170)

Specification:

Housing supplied in solid natural brass with nickel plating

Zinc-coated steel cam

Nickel-plated brass hex fastening nut

Reversible key made from nickel silver

Type 1031 Key retraction when locked only, key rotation 90°

Type 1061 Key retraction when locked and opened, key rotation 360°

Included with the cylinder:

2 reversible keys (See "Special Functions and Keys" for key options)

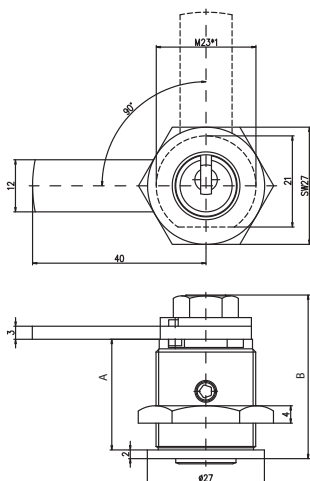
Plastic key clip in dark red for Kaba penta, in dark blue for all other systems

Standard cam 1061-6zk (other configurations, see page K.155 ff.)

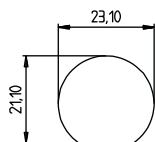
1 fastening nut M23 / 27 hex

Security Card for ownership registration and ordering duplicate keys

Installation and Maintenance Instructions



Type 1031



Installation hole

Premier Systems:	6 Kaba penta	7 Kaba quattro pluS	12 Kaba gemini pluS
	S Kaba Star	Z Kaba 20	8 Kaba 8
Patent expired systems	4 Kaba quattro S	2 Kaba gemini S	
Old systems	3 Kaba quattro ¹⁾	1 Kaba gemini ¹⁾	
Dealer systems	5 Kaba expert ²⁾	19 Kaba maTriX ²⁾	
Old dealer system		9 Kaba gemini T ²⁾	

Overall length 37.7mm, Version 1031A/1061A 42.2mm (Dimension B)

Distance to cam 25.5mm Version, 1031A/1061A 30mm (Dimension A)

Closing paths: A, B, E, F, (See page K.169)

Options (See „Special Functions and Keys“ for details and further options)

BAZ	Construction key	BAZ3	Construction key 3	BS2	Drilling protection
2004	Dust and weather cap	O.ZUB	Without accessories	O.RIEGEL	Without cam

Options, Cams and Accessories	See pages 153-155	
--------------------------------------	-------------------	--

Standard Surface Finishes (for lock cylinder)

NI - Nickel plated	MS - Brass natural	
--------------------	--------------------	--

Optional Surface Finishes

BH - brown light	MP - Brass polished	CR - Chrome standard
BM - brown medium	MSA - Brass antique	CRM - Chrom dull
BD - brown dark		CRP - Chrome polished
NIC - chemically nickel plated		
GO - gold plated		

Order Code System

System Code.Camlock.Type(Drilling protection).Surface finish.Cam.Option

Example:

6.BMZ.1031.NI.1061-23 = penta.camlock.1031.nickel plated. cam 1061-23

Please note that certain options, finishes and dimensions may be subject to extended factory lead times. Please contact our office via email on sales.uk@kaba.com or telephone (0) 870 000 5625.

¹⁾ Kaba gemini and Kaba quattro are only offered for existing master key systems.

²⁾ Kaba expert, Kaba maTriX and Kaba gemini T are only sold to authorized dealers.