

Glass Door Lock

GTS.80-4-040



Application:

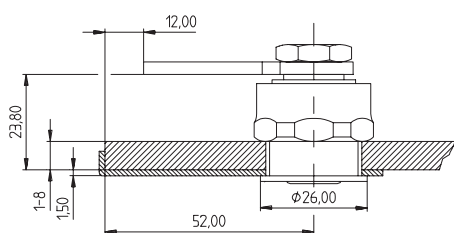
For left and right hinged glass doors, as well for locking from top and bottom.

Specification:

Housing supplied in solid natural brass with nickel plating
 Reversible key made from nickel silver
 Cam type 1061-6zk zinc-coated steel
 Lock plate type A6/CO anodized aluminum
 Fixing sleeve nut type 80-4-038, nickel-plated brass

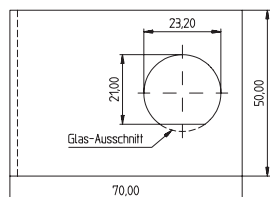
Included with the cylinder:

2 reversible keys (See "Special Functions and Keys" for key options)
 Plastic key clip in dark red for Kaba penta, in dark blue for all other systems
 1 camlock cylinder type 1031 or 1061
 2 pads to protect against glass breakage
 1 bolt
 1 fixing sleeve nut type 80-4-038
 Security Card for ownership registration and ordering duplicate keys
 Installation and Maintenance Instructions

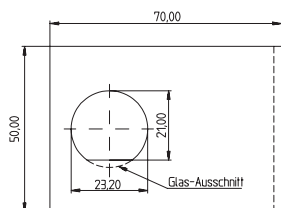


Cam settings:

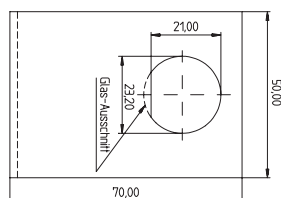
RE: for right hinged doors



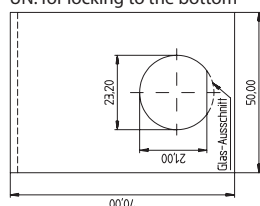
LI: for left hinged doors



OB: for locking to the top



UN: for locking to the bottom



Premier Systems:	6 Kaba penta	7 Kaba quattro pluS	12 Kaba gemini pluS
Patent expired systems	4 Kaba quattro S	2 Kaba gemini S	
Old systems	3 Kaba quattro ¹⁾	1 Kaba gemini ¹⁾	
Dealer systems	5 Kaba experT ²⁾	19 Kaba maTriX ²⁾	
Old dealer system		9 Kaba gemini T ²⁾	

Length Standard - mm

Options (See „Special Functions and Keys“ for details)

BAZ	Construction key	BAZ3	Construction key 3	RE	Right hinged door
LI	Left hinged door	OB	Locking to top	UN	Locking to bottom
1	With camlock 1031. One key removal setting (only when locked) Key rotation 90°, bolt movement 90°				
2	With camlock 1061 Two key removal settings (when locked and open) Key rotation 360°, bolt movement 90°				

Standard Surface Finishes (for lock cylinder)

NI - Nickel plated	MS - Brass natural	
--------------------	--------------------	--

Optional Surface Finishes

BH - brown light	MP - Brass polished	CR - Chrome standard
BM - brown medium	MSA - Brass antique	CRM - Chrom dull
BD - brown dark		CRP- Chrome polished
NIC - chemically nickel plated		
GO - gold plated		

Order Code System

System Code.Lock.Type.Camlock type.Surface finish,Hinge side.Option

Example:

6.GTS.80-4-040.2.NI.RE = penta.glass door lock.80-4-040.1061 camlock.nickel plated.right hinged door

Please note that certain options, finishes and dimensions may be subject to extended factory lead times. Please contact our office via email on sales.uk@kaba.com or telephone (0) 870 000 5625.

¹⁾ Kaba gemini and Kaba quattro are only offered for existing master key systems.

²⁾ Kaba experT, Kaba maTriX and Kaba gemini T are only sold to authorized dealers.