

## Kaba E-SP

E-SP is a standard lock cylinder system featuring high quality in design and manufacturing. It is a flexible and fully developed system for general applications. Precision manufacturing and certified quality assurance guarantee the quality of this cylinder system.

### Anti-picking protection

is provided by the paracentric keyway and specially shaped anti-picking mushroom pins.

### Standard features

Solid brass housing  
 Surface finishes - natural brass (MS) or nickel plated (NI)  
 Brass key, nickel plated  
 Standard Gege or round key bow  
 Encrypted code on all keys  
 5 spring loaded brass tumbler pin pairs  
 Cam 9 mm

Cam positions:

- for double cylinders = 30°
- for single cylinders = 45° variable in 8 different positions.

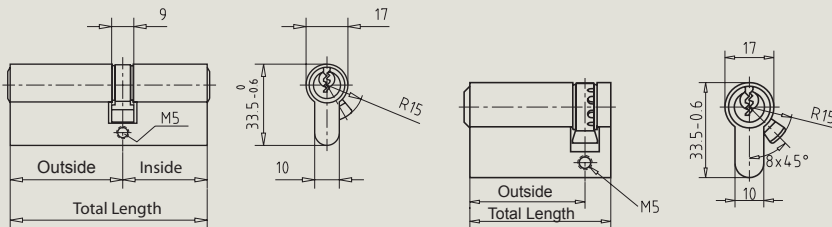
3 keys for double, single and thumbturn lock cylinders

### Standard Quality Lock Cylinder

- Gege special paracentric key profile
- 45 000 Differs
- Encrypted code on all keys

# System Description and Dimensions

## System Code: SYST...ESP



Order Code DZ	Outside	Inside	Total
SYST.5.DZ.27,5+27,5*.ESP	27,5	27,5	55
SYST.5.DZ.27,5+30*.ESP	27,5	30	57,5
SYST.5.DZ.27,5+35,5*.ESP	27,5	35,5	63
SYST.5.DZ.27,5+40*.ESP	27,5	40	67,5
SYST.5.DZ.30+30*.ESP	30	30	60
SYST.5.DZ.30+35,5*.ESP	30	35,5	65,5
SYST.5.DZ.30+40*.ESP	30	40	70
SYST.5.DZ.35,5+35,5*.ESP <sup>6</sup>	35,5	35,5	71
SYST.5.DZ.27,5+45*.ESP	27,5	45	72,5
SYST.5.DZ.30+45*.ESP	30	45	75
SYST.5.DZ.35,5+40*.ESP <sup>6</sup>	35,5	40	75,5
SYST.5.DZ.27,5+50*.ESP	27,5	50	77,5
SYST.5.DZ.30+50*.ESP	30	50	80
SYST.5.DZ.35,5+45*.ESP <sup>6</sup>	35,5	45	80,5
SYST.5.DZ.40+40*.ESP	40	40	80
SYST.5.DZ.27,5+55*.ESP	27,5	55	82,5
SYST.5.DZ.30+55*.ESP	30	55	85
SYST.5.DZ.35,5+50*.ESP	35,5	50	85,5
SYST.5.DZ.40+45*.ESP	40	45	85
SYST.5.DZ.27,5+60*.ESP	27,5	60	87,5
SYST.5.DZ.30+60*.ESP	30	60	90
SYST.5.DZ.35,5+55*.ESP	35,5	55	90,5
SYST.5.DZ.40+50*.ESP	40	50	90
SYST.5.DZ.45+45*.ESP	45	45	90
SYST.5.DZ.35,5+60*.ESP	35,5	60	95,5
SYST.5.DZ.45+50*.ESP	45	50	95
SYST.5.DZ.40+55*.ESP	40	55	95
SYST.5.DZ.30+65*.ESP	30	65	95
SYST.5.DZ.40+60*.ESP	40	60	100
SYST.5.DZ.35,5+65*.ESP	35,5	65	100,5
SYST.5.DZ.45+55*.ESP	45	55	100
SYST.5.DZ.30+70*.ESP	30	70	100
SYST.5.DZ.50+50*.ESP	50	50	100
SYST.5.DZ.45+60*.ESP	45	60	105
SYST.5.DZ.30+75*.ESP	30	75	105
SYST.5.DZ.50+60*.ESP	50	60	110
SYST.5.DZ.55+55*.ESP	55	55	110
SYST.5.DZ.60+60*.ESP	60	60	120

Order Code HZ	Outside	Total
SYST.5.HZ.30*.ESP	30	39
SYST.5.HZ.35,5*.ESP	35,5	44,5
SYST.5.HZ.40*.ESP	40	49
SYST.5.HZ.45*.ESP	45	54
SYST.5.HZ.50*.ESP	50	59
SYST.5.HZ.55*.ESP	55	64
SYST.5.HZ.60*.ESP	60	69
SYST.5.HZ.65*.ESP	65	74
SYST.5.HZ.70*.ESP	70	79
SYST.5.HZ.75*.ESP	75	84

\*surface finish, NI or MS

Cylinder types	Order Code
Double lock cylinder, 5 pins	<b>DZ</b>
also available as thumbturn cylinder	<b>DKZ</b>
Round knob	<b>RK</b>
Example	<b>SYST.5.DKZ.30+30RK.NI.ESP</b>
Single lock cylinders, 5 pins	<b>HZ</b>

Further details and order information can be found in the relevant dormakaba catalogues or system descriptions.

dormakaba Deutschland GmbH  
DORMA Platz 1  
58256 Ennepetal  
T: +49 2333 793-0  
F: +49 2333 793-49 50  
www.dormakaba.com

Subject to change without notice  
© 2016 dormakaba. Version 12/2016