

VARIFLEX

Movable partition walls from manual through semi-automatic to fully automatic.



CONTENTS

Concepts



Introduction
Page 4 – 5



Multi-functional layouts
Page 6 – 7



Design and aesthetics
Page 8 – 9



Flexibility and convenience
Page 10 – 11



Sound insulation
Page 12 – 13



Fire prevention and Variflex 88
Page 14 – 15

Technology



Technology
Page 16 – 17



Element types
Page 18 – 19



Element design and construction
Page 20 – 21



Adaptable track systems
Page 22 – 23



Facts and figures
Page 24 – 25



Service
Page 26 – 27

SOPHISTICATED INTERIOR DESIGN – THE REQUIREMENTS.

Modern living areas should provide those who use them with an enhanced quality of life. Movable partition walls from the DORMA Hüppe Variflex system offer the best possible solution there is.

Regardless of their characteristics and function, rooms can be effortlessly partitioned, made smaller or larger or reportioned to suit individual requirements. Any area, from a small conference room to a large exhibition hall, can be optimally adapted to suit varying numbers of users. Excellent

sound insulation properties allow different events to be held in adjacent areas without any intrusive noise. This flexibility is the key to creating the perfect ambiance in any situation, distinguished by a broad range of surface finishes and coverings to satisfy every creative or aesthetic demand. Mobile partitioning coupled with flawless operating technology enables DORMA Hüppe to provide the ideal solution every time, ensuring that the people using the rooms feel at home, whatever the setting.

CUSTOMISED FLEXIBILITY FOR MULTI-FUNCTIONAL LAYOUTS.

Project: WMF Communication Center, Geislingen an der Steige, Germany
 Architects: HPP Laage+Partner, Stuttgart, Germany;
 Planungsatelier Prof. R. Schricker, Stuttgart, Germany



High flexibility – starting with planning

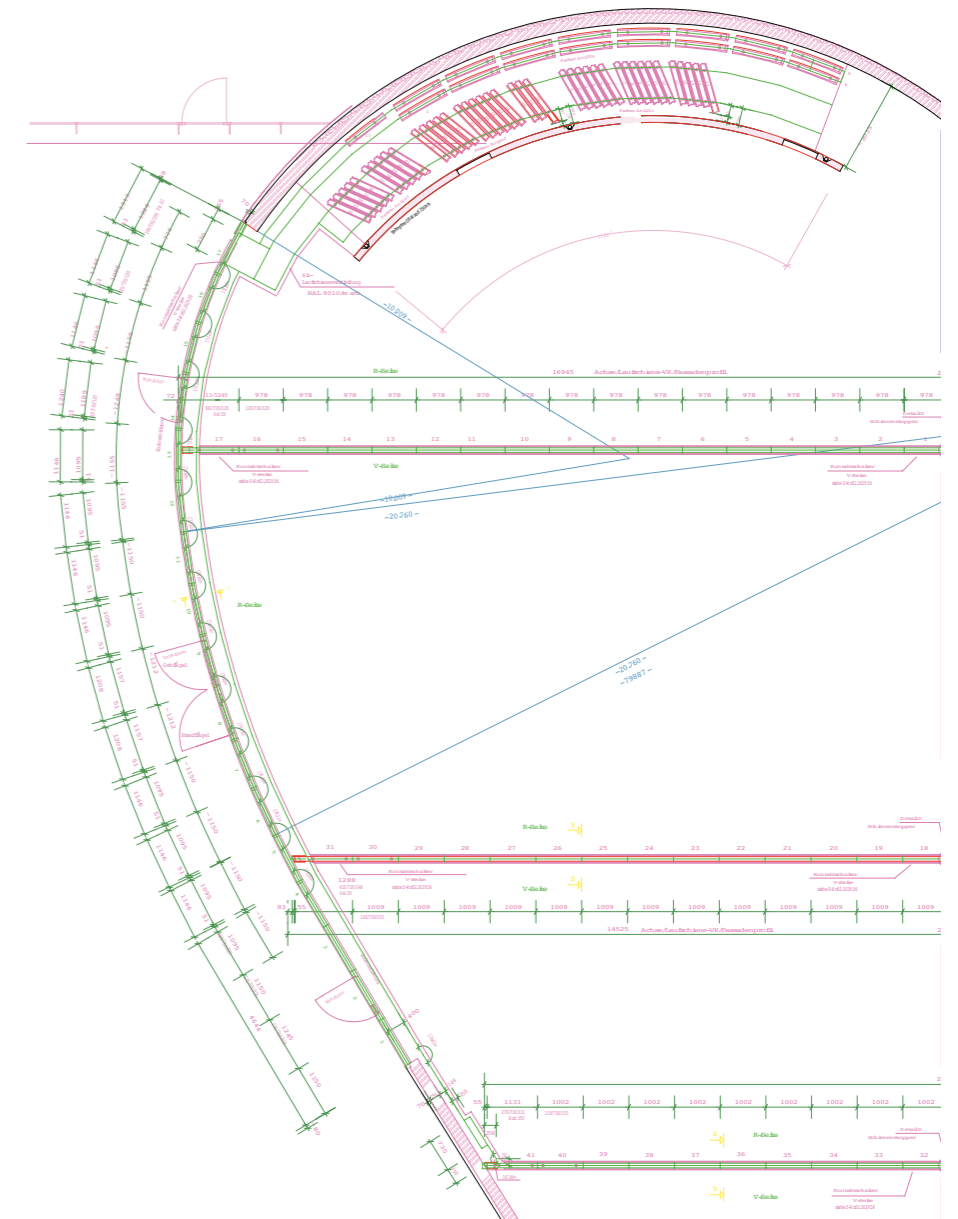
With Variflex from DORMA Hüppe, the architectural design options are almost limitless. Intelligent partitioning creates areas perfectly tailored to the given demands and functional requirements. This guarantees greater flexibility in daily use.

The more complex the demands ...

... imposed on an operable partitioning system, the louder the call for DORMA Hüppe Variflex as the perfect answer. The Variflex system can adapt even those areas with the most unusual dimensions to suit individual requirements.

The diversity and flexibility of the system guarantees an ideal solution every time, even for rooms with high or sloping ceilings or angled walls.

Flexible space division with the Variflex operable partitioning system to cater for varying needs.



FUNCTIONAL AND AESTHETIC DESIGN.



The character of a room is defined by its appearance

With an almost infinite choice of designs and colours to meet even the most sophisticated design and layout specifications, DORMA Hüppe Variflex comprehensively translates creative ideas into reality.

The Variflex system is able to satisfy the most intricate aesthetic needs with a multitude of design

options. The high-quality materials and their visual effects are unsurpassed.

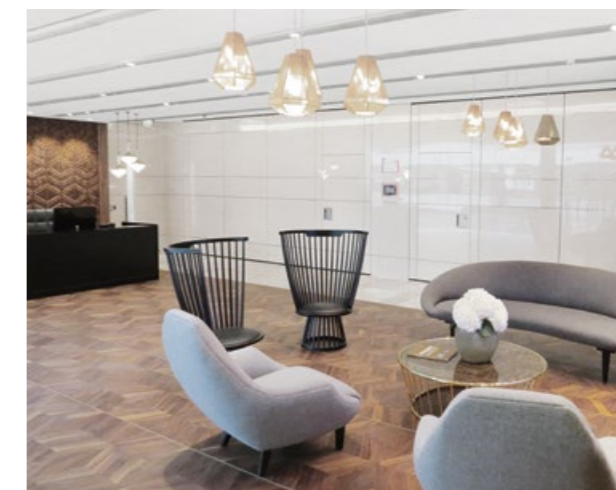
When it comes to the design-oriented configuration of today's living areas, DORMA Hüppe Variflex can always be relied upon to play its part in the overall plan.

A wide choice of high-quality materials

A broad array of finishes – from hardwood veneers through fabric coverings to laminated surfaces –

guarantees the desired visual appearance for many years to come.

The use of exquisite materials alone or in combination can be particularly appealing.



OPERATION: MANUAL OR SEMI-AUTOMATIC.

Standard operating system: Manual

The manual system offers a high level of operating ease with simple, safe transfer of the elements by hand into the required position.

The top and bottom sealing strips are actuated manually with ease using a crank.

The spindle mechanism then extends the spring-loaded, flexible double-chamber seals against the floor and the ceiling track.

ComforTronic for greater convenience

Operation with semi-automatic ComforTronic technology requires even less effort, with added safety a further benefit.

- Extension and retraction of the sealing strips is automatic, eliminating

both the time and effort of manual crank operation

- Precision-controlled contact pressure of the sealing strips is assured at all times
- Floor-mounted guides and special track rails are not required
- Door and window elements can be fitted

Project: Hannover Exhibition Centre, Germany



PREMIUM, FULLY AUTOMATIC OPERATION.

ComfortDrive offers all the advantages of state-of-the-art bus technology. This premium, fully automatic control unit moves the elements and engages them in the required position at the touch of a button. In addition to the standard functions, customised positioning and personnel access settings can also be programmed into the system.



ComfortDrive – the fully automatic partition operating system with state-of-the-art bus technology.

ComfortDrive – the premium option

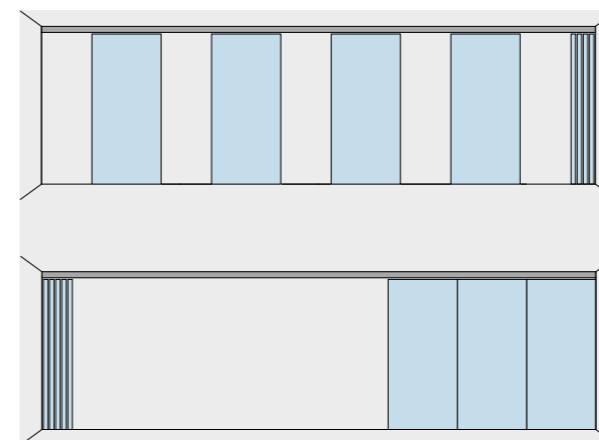
- Elements moved completely automatically at the touch of a button; easy operation thanks to the self-explanatory touchscreen
- Greater convenience thanks to fast partition travel at speeds of up to 250 mm/s

- Intelligent bus technology: can be individually programmed to specific customer requirements
- Reliable safety with automatic stop on contact with an obstruction; TÜV/GS tested
- Slender track sections
- Slimline floor tracks – plus solutions without floor-mounted guides (please enquire)



Videos and downloads:
dorma-hueppe-
inspiration.com

Individually programmable



Just two of many options that customers can programme individually for flexible management of their interior space: the top diagram shows a freely selected position, while a partial-open position (with one or multiple elements) is shown in the bottom figure.

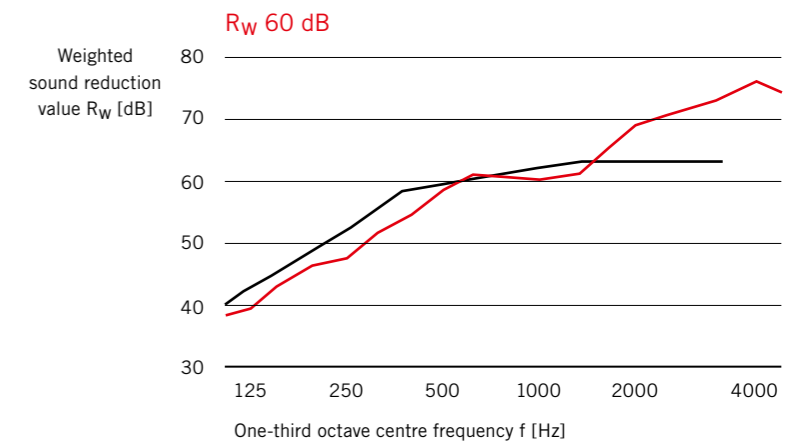
High travel speed



Fast opening, fast closing: ComfortDrive quickly moves the DORMA Hüppe Variflex elements into the required position, monitored by our Smart Control system.

LEADING THE FIELD IN SOUND INSULATION.

Project: SIDE Hotel, Hamburg, Germany
 Architect: Jan-Sörmer-Architekten, Hamburg, Germany
 Interior design: Matteo Thun, Milan, Italy;
 Robert Wilson, New York, USA



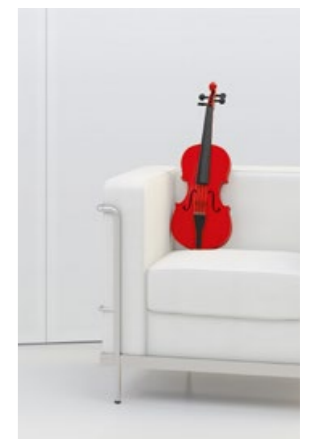
An excellent solution for adjacent events

As well as having the function of visually subdividing areas, movable partition walls also have the role in many applications of filtering acoustic signals in order to prevent noise disturbing the users of the other rooms. Room partitioning with reliable acoustic insulation properties is a must, particularly when events run concurrently.

The outstanding craftsmanship of the DORMA Hüppe Variflex system ensures unsurpassed sound insulation without compromising ease of use. As freely oscillating elements, the clip-on fascia boards block the transmission of structure-borne noise, thus ensuring extremely high acoustic performance.

For the well-being of room users

Special acoustic panels manufactured with slits or holes encourage sound absorption and reduce reverberation. These advantages, coupled with the high quality standards and the optical effect of DORMA Hüppe Variflex, greatly enhance user comfort and offer incomparable benefits for areas used for musical events and larger conferences.



DORMAcoustic: The innovative room acoustics collection comprises affordable surface finishes for a wide range of applications.

SO FIRE DOESN'T HAVE A CHANCE: VARIFLEX EI 30.

Developed for fire prevention

Safeguarding human life must be the top priority at all times. Fire prevention and protection must be guaranteed, above all in public areas. Developed specifically for fire prevention, the Variflex EI 30 movable wall system from DORMA Hüppe is classi-

fied in accordance with the new EN 13501-2 standard. What's special about this system is that it can also be fitted with a passdoor tested to EN 1634-1. Its construction furthermore permits a sound insulation value of up to R_w 57 dB.



In order to ascertain the fire resistance class, a wall comprising Variflex EI 30 panels with an integrated passdoor was directly subjected to fire for longer than half an hour in a test lab.



Project: Radisson Blu Hotel, Berlin, Germany
Architect: nps tchoban voss, Berlin, German

LIGHTWEIGHT AND SOUND-INSULATING: VARIFLEX 88.

Sensational design achieves 58 dB in sound reduction

The DORMA Hüppe development team took on the significant challenge of achieving better sound insulation with a thinner partition wall – and solved the problem to impressive effect with the Variflex 88. The newly developed design exhibits an exceptionally

high degree of imperviousness, complemented by optimized profiles and sealing strips to produce outstanding sound reduction values of up to R_w 58 dB. With a wall thickness is just 88 mm, the weight per unit area is also significantly reduced, bringing both structural and handling benefits.

The advantages at a glance

- Improved sound insulation with a reduced wall thickness
- Space savings in the parking area
- Low specific weights with obvious structural advantages
- Easy handling
- Tested by Fraunhofer IBP (Institute for Structural Physics)



Videos and downloads:
dorma-hueppe-
inspiration.com

Space savings in the parking area



More room with 12 percent less wall thickness. You save space – and space is expensive. With Variflex 88, parking areas, stacking tracks and niches can be made smaller to improve overall spatial efficiency.

Significantly reduced specific weight



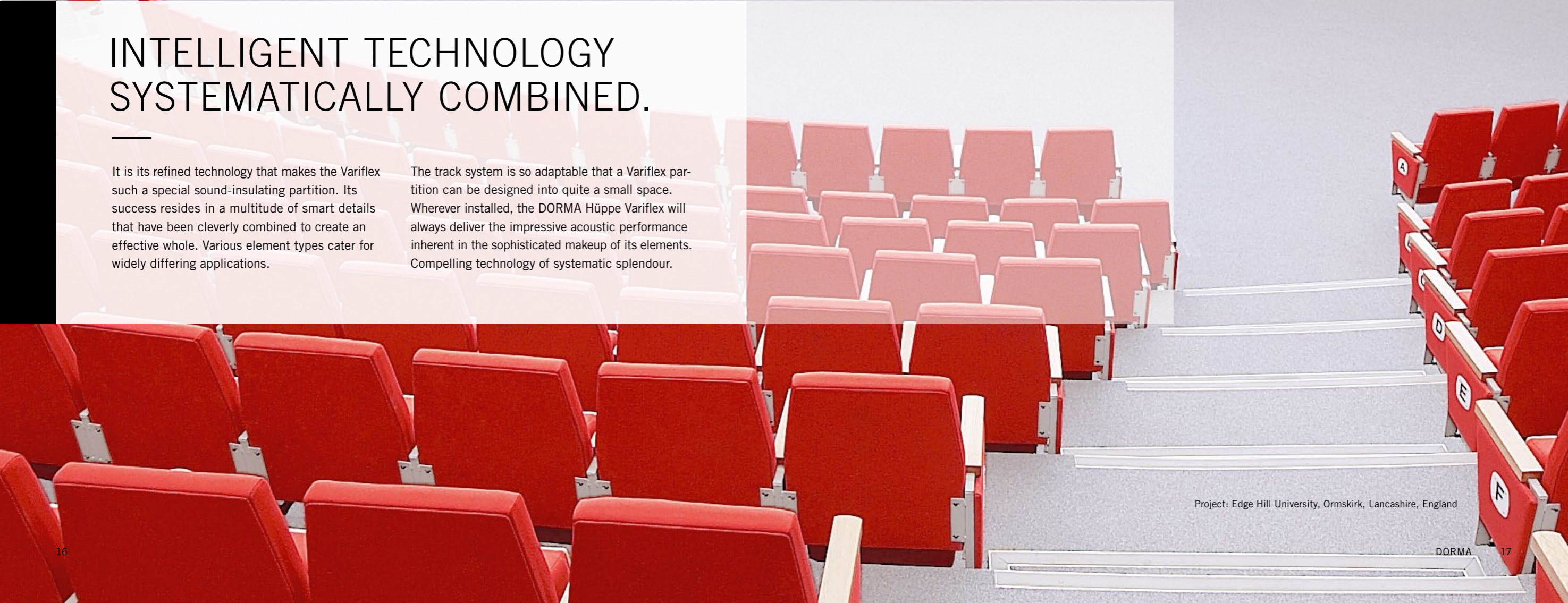
Variflex 88 reduces the load: Right at the planning stage, the reduced weight means less stringent structural requirements. And the handling of the elements in day-to-day operations also requires less effort.



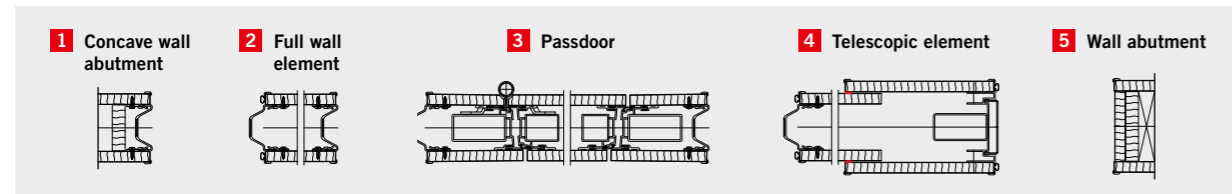
INTELLIGENT TECHNOLOGY SYSTEMATICALLY COMBINED.

It is its refined technology that makes the Variflex such a special sound-insulating partition. Its success resides in a multitude of smart details that have been cleverly combined to create an effective whole. Various element types cater for widely differing applications.

The track system is so adaptable that a Variflex partition can be designed into quite a small space. Wherever installed, the DORMA Hüppe Variflex will always deliver the impressive acoustic performance inherent in the sophisticated makeup of its elements. Compelling technology of systematic splendour.



MANY DIFFERENT ELEMENTS FOR A FLEXIBLE LAYOUT



- a Approx. 40 V, Ölflex cable ex works, 4 × 1.5 mm², length 6 m, to concave wall abutment
- b Control unit (254 × 180 × 90 mm)
- c Cable ex works, 3 × 0.75 mm², length 2 m, to electric socket
- d Electric socket by others, 100–120 V or 200–240 V, 50–60 Hz, at least 10 A
- e Cable by others, 3 × 0.6 mm², flexible, max. length 20 m, to switch
- f Switch

A multitude of element types for every need

The various element types available within the Variflex system can be used in applications of almost any kind and in the most widely diverse settings.

Variflex systems can match unique design features, satisfy special design specifications and incorporate door elements or a variety of window options. The partitioning can be straight or angled, and can also accommodate special

features such as sloping ceilings. Whatever the problem, DORMA Hüppe Variflex offers the best solution.



Full wall element



Telescopic element (flush* or with overlapping thrust unit)



Angled element**



90° corner element



Double passdoor**



Passdoor within element



Passdoor full height, fixed**



Vision element*



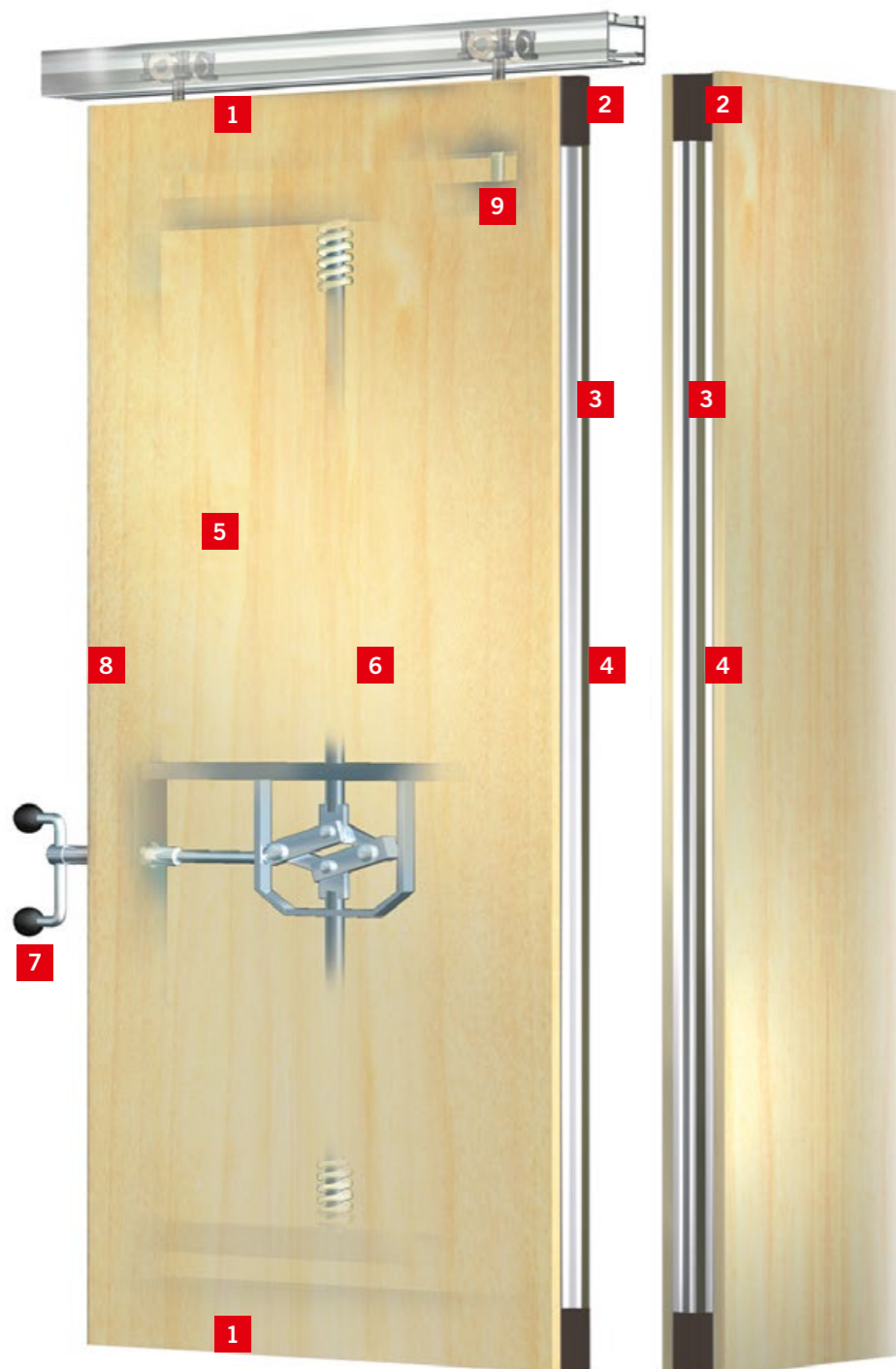
Passdoor with vision panel*



Special element for non-load-bearing or sloping ceilings*

* Not for Variflex 88
** In preparation for Variflex 88

THE ADVANTAGES IN DETAIL.



1 Horizontal seals

The principle of double-skin construction is applied consistently in the seal area in order to ensure maximum sound insulation. A spindle mechanism extends the spring-loaded, flexible double-chamber seals against the floor and the ceiling track. Any irregularities in the flooring are offset by spring-loaded double-chamber seals. The contact force of the sealing strips does not place excessive strain on screed floors, but does ensure that the Variflex system is sufficiently stable to prevent the panels moving.

2 Corner seals

Variflex resolves the technical issue of corner seals with specially designed, elastic corner pieces that also reinforce the stability and sound insulation properties of the system.

3 Vertical seals

All Variflex models have flexible, vertical sealing strips to ensure the best possible seal for maximum sound insulation. The strips extend some distance into the panels to ensure positive interlock.

4 Magnetic strip

The individual panels are centred via the magnetic strips to guarantee sound, positive locking and sealing.

5 Cover panels

The cover panels are clipped on as freely oscillating bodies to ensure optimum sound insulation with minimum system weight. The panels can be replaced without removing the elements. Their surfaces can be coated or covered with any conventional interior design material.

6 Sound insulation material

The various Variflex models can be fitted with additional insulation materials according to the specified acoustic requirements.

7 Operating handle

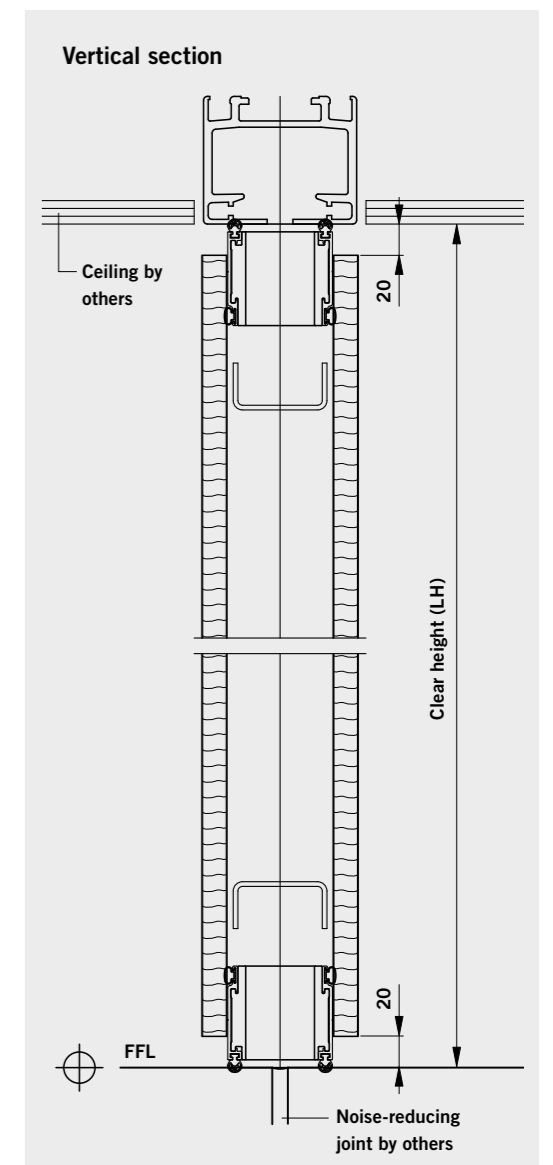
In manual systems, the element sealing strips are operated using a crank. The crank has a captive bayonet fitting to prevent it from being pulled off. The bayonet arrangement is easy to disengage and prevents crank slippage.

8 Frame

The frame is of torsionally stiff steel and aluminium construction. Transverse forces will not, therefore, cause deformation of the frame. This, combined with the panels mounted in acoustically free suspension, means Variflex elements are able to offer both exceptional strength and outstanding sound insulation.

9 Roller assemblies

The dampening track roller assemblies prevent the transmission of impact forces and operating noise, so protecting element, track and carrier.



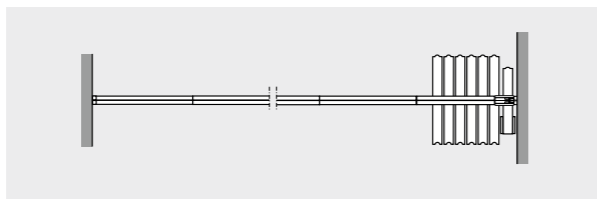
EASY PARKING.

In their stacked position, the elements form a compact package and can be accommodated in the smallest of spaces, depending on the room situation. The low weight of the elements and the associated

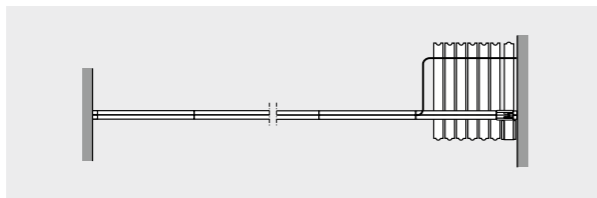
structural advantages are particularly noticeable here. Below you will find four standard parking arrangements by way of example; individual solutions for special requirements are also possible.

The four standard stacking/parking track systems offer convenient operability with a minimum of noise from the individual elements as they slide into position.

Inboard parking solutions

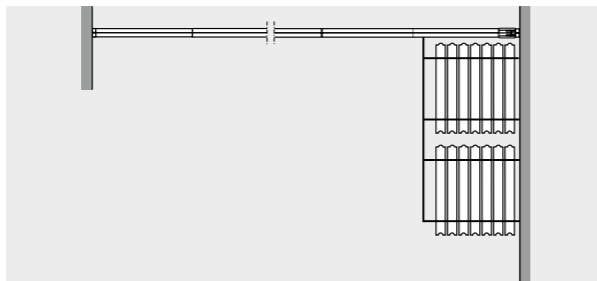


Parking solution PLA
 – Single-point suspension
 – 90° to partition axis

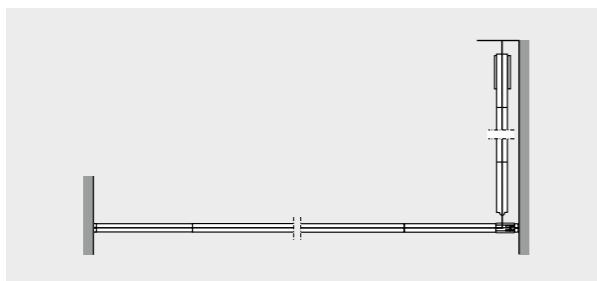


Parking solution PLB
 – Two-point suspension
 – 90° to partition axis

Outboard parking solutions



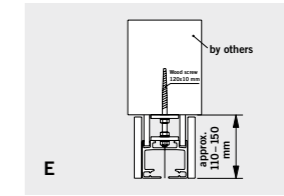
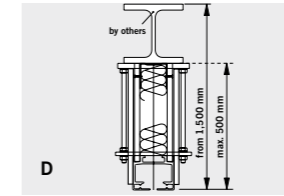
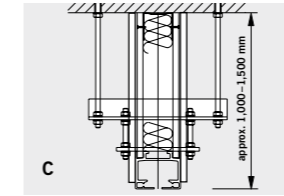
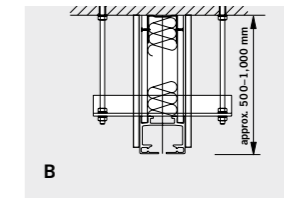
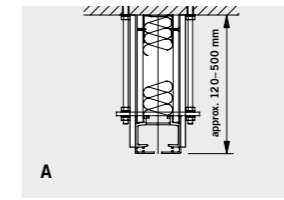
Parking solution PLC
 – Two-point suspension
 – 90° to partition axis
 – In several stacks



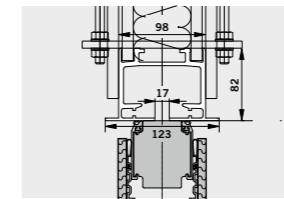
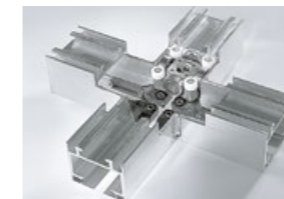
Parking solution PLD
 – Two-point suspension
 – 90° to partition axis
 – Parked in a row arrangement

Suspension systems

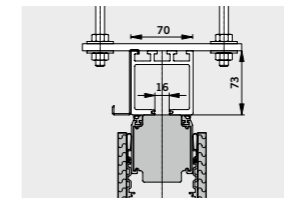
The DORMA Hüppe Variflex system offers a range of suspension systems to suit each installation and application. Here are just some examples.



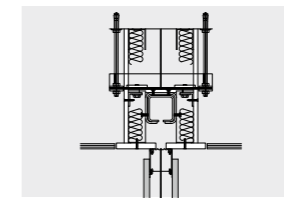
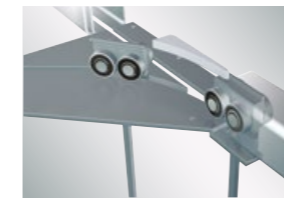
Track systems



R-type track with web
 Track system for right-angled configurations with cross-roller carriers for element weights up to 500 kg. Support rollers in the junctions guarantee easy operation when sliding the elements across intersections.

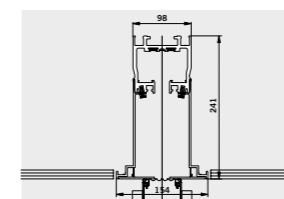


K-type track
 Mechanically coded junction technology with curves and switches for element weights up to 250 kg.



i-Track
 Steel track system for large element heights and weights, with special mechanical coding in the carriers, plus curves and switches for maximum operating ease and effortless positioning of the elements.

Track system with fully automatic drive



ComfortDrive
 Fully automatic track operator system for element weights of up to 500 kg. Fast opening and closing speeds for enhanced convenience. Easy pushbutton operation. Narrow profiles and slender track sections for aesthetic elegance. Suitable for use without floor-mounted guides if required.

THE OPTIMAL PARTITION FOR SPECIAL REQUIREMENTS.

Project: Vienna Exhibition Centre, Austria
 Architect: Gustav Peichl, Vienna, Austria



Dimensions in mm*				
	Element thickness	120	100	88
Manual (M)	Clear height* (min./max.)	2,000/14,500	2,000/14,500	2,000/4,100
	Element width* (min./max.)	600/1,250	600/1,250	600/1,250
Semi-automatic (ComforTronic)	Clear height* (min./max.)	2,000/6,000	2,000/6,000	2,000/4,100
	Element width* (min./max.)	750/1,250	750/1,250	600/1,250
Fully automatic (ComfortDrive)	Clear height* (min./max.)		2,000/10,000**	2,000/4,100***
	Element width* (min./max.)		750/1,250	600/1,250***
Design				
Framed construction		Aluminium-steel	Aluminium-steel	Aluminium-steel
Panel fixing		Freely oscillating	Freely oscillating	Freely oscillating
Element interconnection/design of the vertical profiles		Aluminium profile with magnetic strip and sealing lips	Aluminium profile with magnetic strip and sealing lips	Aluminium profile with magnetic strip and sealing lips
Finish and trim				
Panel design with <i>K-type edge</i> with visible surface edging		■	■	■
Panel design with <i>U-type edge</i> with protective surrounding trim		■	■	■
Panel design with <i>S-type edge</i> with robust sheet steel skin		—	■	—
Manual model (M)		Manual operation of the elements and actuation of the sealing strips		
Semi-automatic model (ComforTronic)		Manual operation of the elements, electronically controlled extension and retraction of the sealing strips		
Fully automatic model (ComfortDrive)		Fully automatic moving of the elements, electronically controlled extension and retraction of the sealing strips***		
Fire protection package <i>EI 30</i>		—	Special frame construction in conjunction with tested cover board and sealing compound	—
Passdoors		Single-leaf following technical clearance from factory	Single-leaf or double-leaf	Single-leaf or double-leaf***
Technology				
Weighted sound reduction value determined per EN 20140 in R_w (dB)		58/60	38 to 57 (as <i>S-edge</i> : 58)	kg/m ² 23 24 32 41 49 dB 41 46 53 56 58
Positive and frictional locking of the vertical element connections		Convex-concave profile form, force of attraction of the magnetic strip 40 N/m		

* Larger widths possible on application. Provisional details regarding the element heights/element widths indicated can only be confirmed following consultation with the Design Department.
 ** Depending on the sound insulation/weight
 *** In preparation, starts Dec 2016

Subject to change without notice

PROFESSIONAL SINGLE-SOURCE SERVICE.



Excellent advice – from initial idea to aftercare

Whether you are building from scratch, rebuilding or modernising, by choosing a partitioning system from DORMA Hüppe you will benefit from outstanding product quality and the expert advice of our team.

We will oversee your projects, providing individual advice and the latest architectural tools for integrated planning and installation as well as a proficient after-sales service to ensure that your partition system functions dependably for many years to come.

Download additional brochures and specification texts here:



Individual advice on-site during the planning and realisation phases



Personal, proficient, reliable: DORMA Hüppe Service

EPD Certificate for all DORMA Hüppe systems

For the evaluation of Green Building Projects in accordance with DGNB [German Sustainable Building Council] or LEED for example, a life cycle assessment (LCA) for the building materials is required detailing the entire product life cycle. This is provided in the form of an Environmental Product Declaration (EPD) in accordance with ISO 14025 and EN 15804, available for all partitions.



Building Information Modelling (BIM)

Building projects today are based on virtual planning and proving first, followed by the real construction work. By generating digital, object-oriented 3D models, BIM increases efficiency in the planning, construction and management of buildings. So as to optimise your planning processes, all DORMA Hüppe operable partitioning systems are available as up-to-date BIM models.



Enhancing the reliability of your partition wall

Regular servicing ensures that the high quality of DORMA Hüppe partitioning systems is maintained well into the future. Our Service Department will provide whatever assistance you require – personally, proficiently and reliably.

A servicing agreement offers many benefits:

- Increases the lifetime of your system
- Minimises downtime
- Extends the warranty
- Ensures adherence to legal standards (operator liability)
- Ensures the use of genuine spare parts
- Ensures preferential treatment in the event of malfunctions



DORMA Hüppe
Raumtrennsysteme
GmbH+Co. KG
Industriestraße 5
26655 OCHOLT
GERMANY
Phone +49 4409 666-0
Fax +49 4409 666-489
info.hueppe@dorma.com
www.dorma-hueppe.de

DORMA CBP Schweiz AG
Martinsbruggstrasse 85
9016 ST. GALLEN
SWITZERLAND
Phone +41 71 282 82 82
Fax +41 71 282 82 83
info-cbp@dorma.com
www.dorma-cbp.ch

DORMA Hüppe Austria GmbH
Hollabernerstraße 4b
4020 LINZ
AUSTRIA
Phone +43 732 600451
Fax +43 732 650326
office@dorma-hueppe.at
www.dorma-hueppe.at