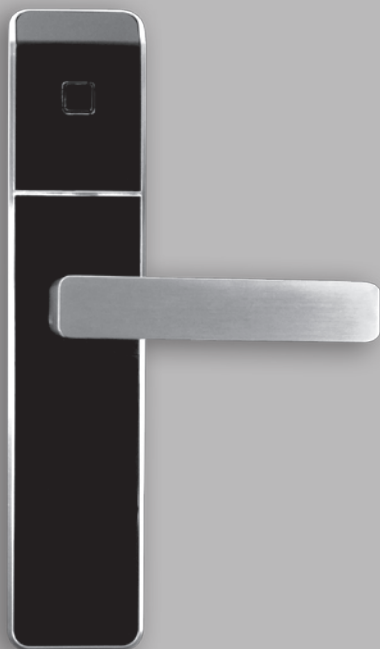


INSTALLATION GUIDE

Confidant RFID Kit 1

3rd Party Rose Mount & Back Plate



Confidant RFIDTM Installation Instructions (Kit 1)

IMPORTANT: Wear Safety glasses before starting the replacement of parts.

Installation Steps:

- 1. Tools 3
- 2. Inventory 4
 - Lock with *Key Override* 4
 - Lock without *Key Override* 5
- 3. Align Posts with Mortise..... 6
- 4. Select & Install Spindle..... 7
- 5. Install Outside Lever..... 9
- 6. Install Lock on Door 10
 - Back Plate Mount (*Key Override*) 10
 - Rose Mount (*Key Override*) 10
 - Back Plate Mount (*No Key Override*) 11
 - Rose Mount (*No Key Override*) 11
- 7. Plug Battery Holder 12
- 8. Test Lock Functionality 12
- 9. Program Lock - With Jack Cable..... 13
- 10. Install Battery Door 13
- Annex A. Install Outside Housing with Gasket and Cylinder Shield 14
- Annex B. Remove Battery Holder 14
- Annex C. Install the Bluetooth module 15

Drilling Templates are in the center of the Installation Guide or available on www.kabalodgingsupport.com

Model: Confidant RFID
IC: 4652A-CRFID
FCCID: Q8SCONFIDANT-RFID

Regulatory Compliance: This device complies with Part 15 of the FCC Rules. Operation is subject to the following two conditions: (1) this device may not cause harmful interference, and (2) this device must accept any interference received, including interference that may cause undesired operation.

Any changes or modifications of this product, not approved by manufacturer will void the user’s authority to operate the equipment.

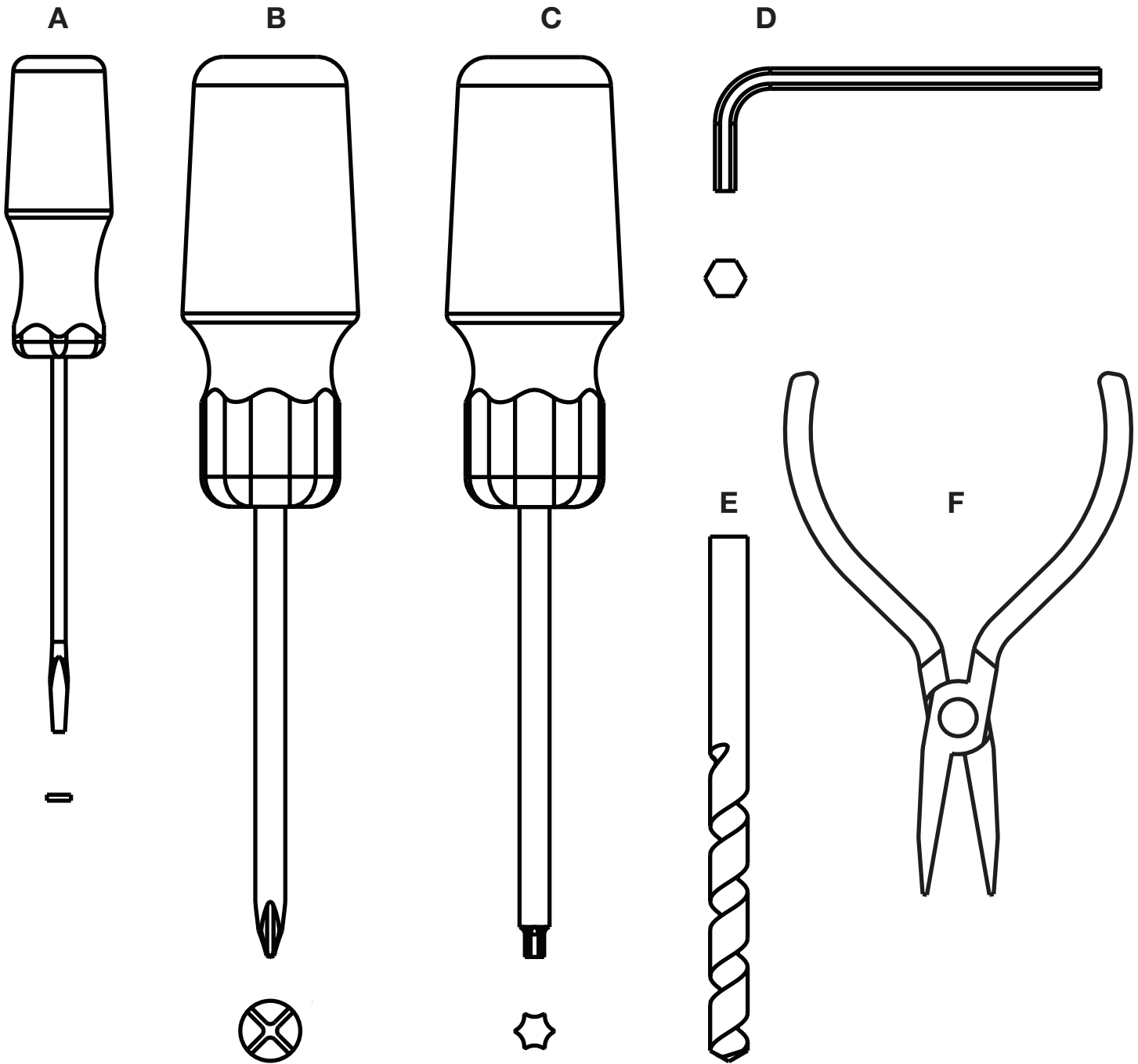
This device complies with Industry Canada licence-exempt RSS standard(s). Operation is subject to the following two conditions: (1) this device may not cause interference, and (2) this device must accept any interference, including interference that may cause undesired operation of the device.

Le présent appareil est conforme aux CNR d'Industrie Canada applicables aux appareils radio exempts de licence. L'exploitation est autorisée aux deux conditions suivantes : (1) l'appareil ne doit pas produire de brouillage, et (2) l'utilisateur de l'appareil doit accepter tout brouillage radioélec-trique subi, même si le brouillage est susceptible d'en compromettre le fonctionnement.

Made in Canada

©2015 Kaba Lodging Systems. All trademarks and registered trademarks are the property of their respective owners.

1- Tools



A - Screw Driver Small Flat

B - Screw Driver Phillips #2

C - Screw Driver Torx T-20

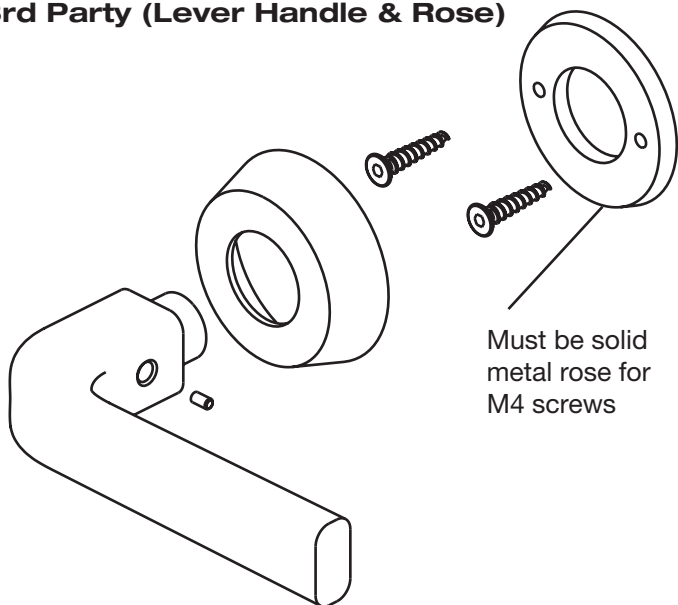
D - Hexagonal Key 3 mm

E - 25mm / 24mm / 19mm / 12mm / 10mm Drill Bit

F - Needle Nose Pliers

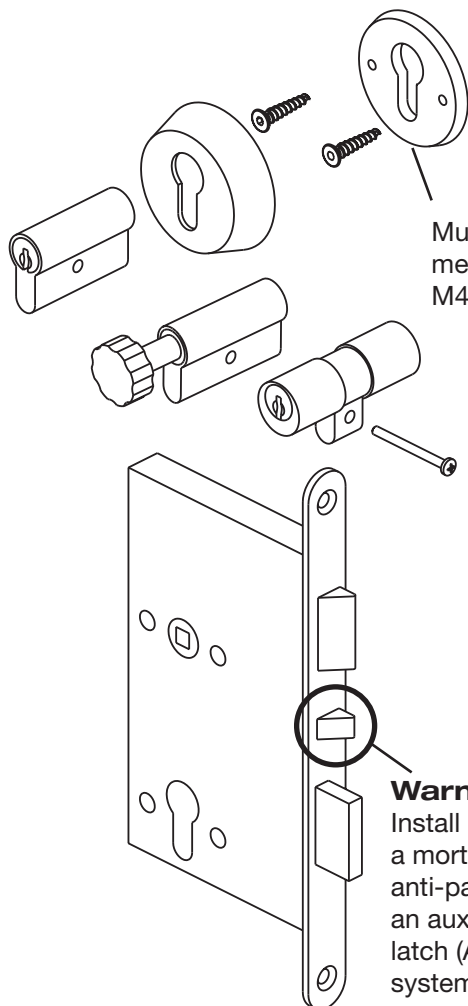
2- INVENTORY - Lock with Key Override

3rd Party (Lever Handle & Rose)



Must be solid metal rose for M4 screws

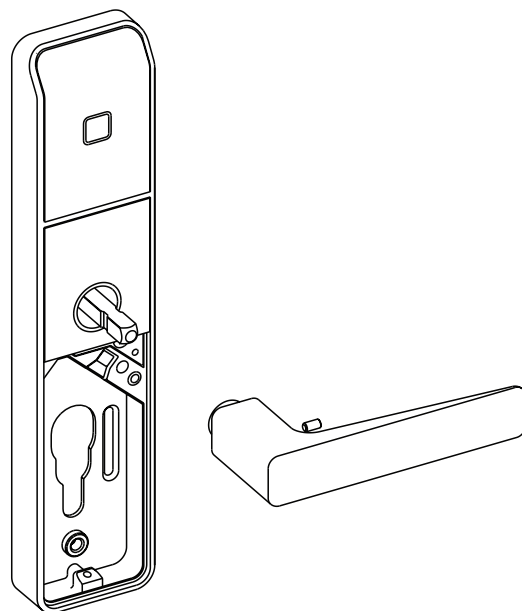
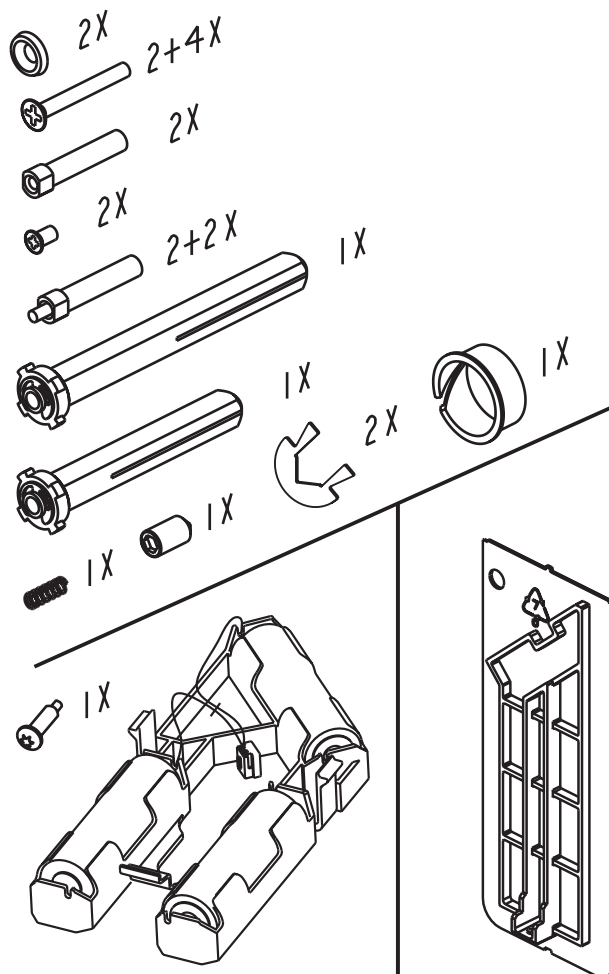
3rd Party (Mortise, Cylinder & Rose)



Must be solid metal rose for M4 screws

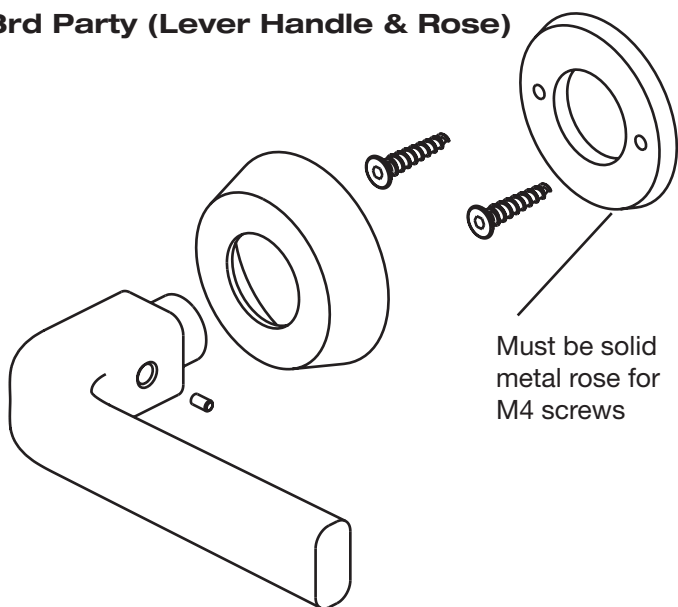
Warning:
Install only on
a mortise with
anti-panic and
an auxiliary dead
latch (Anti-Pick
system)

Inventory Kit



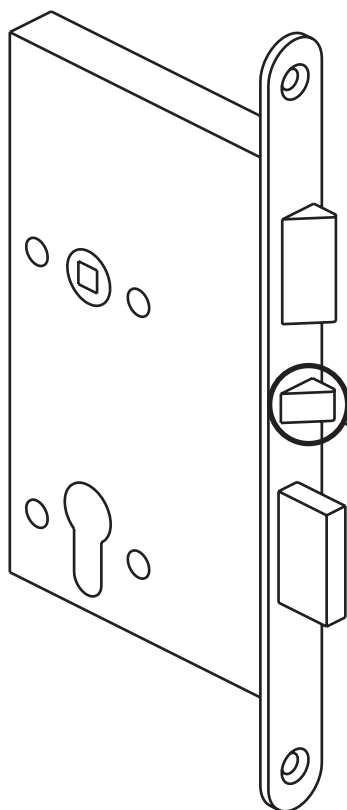
(To use if no cylinder is required)

3rd Party (Lever Handle & Rose)



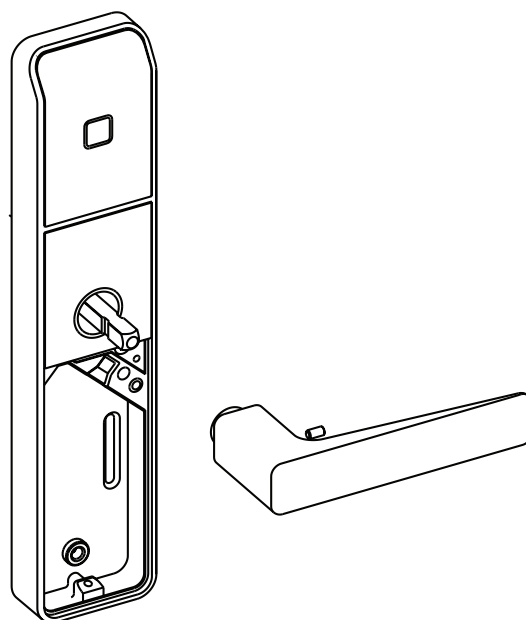
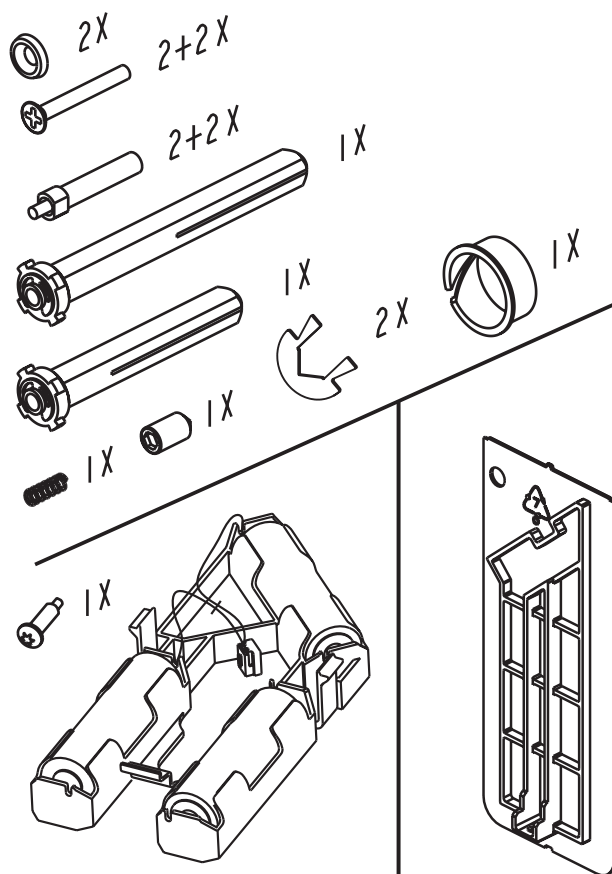
Must be solid metal rose for M4 screws

3rd Party (Mortise)

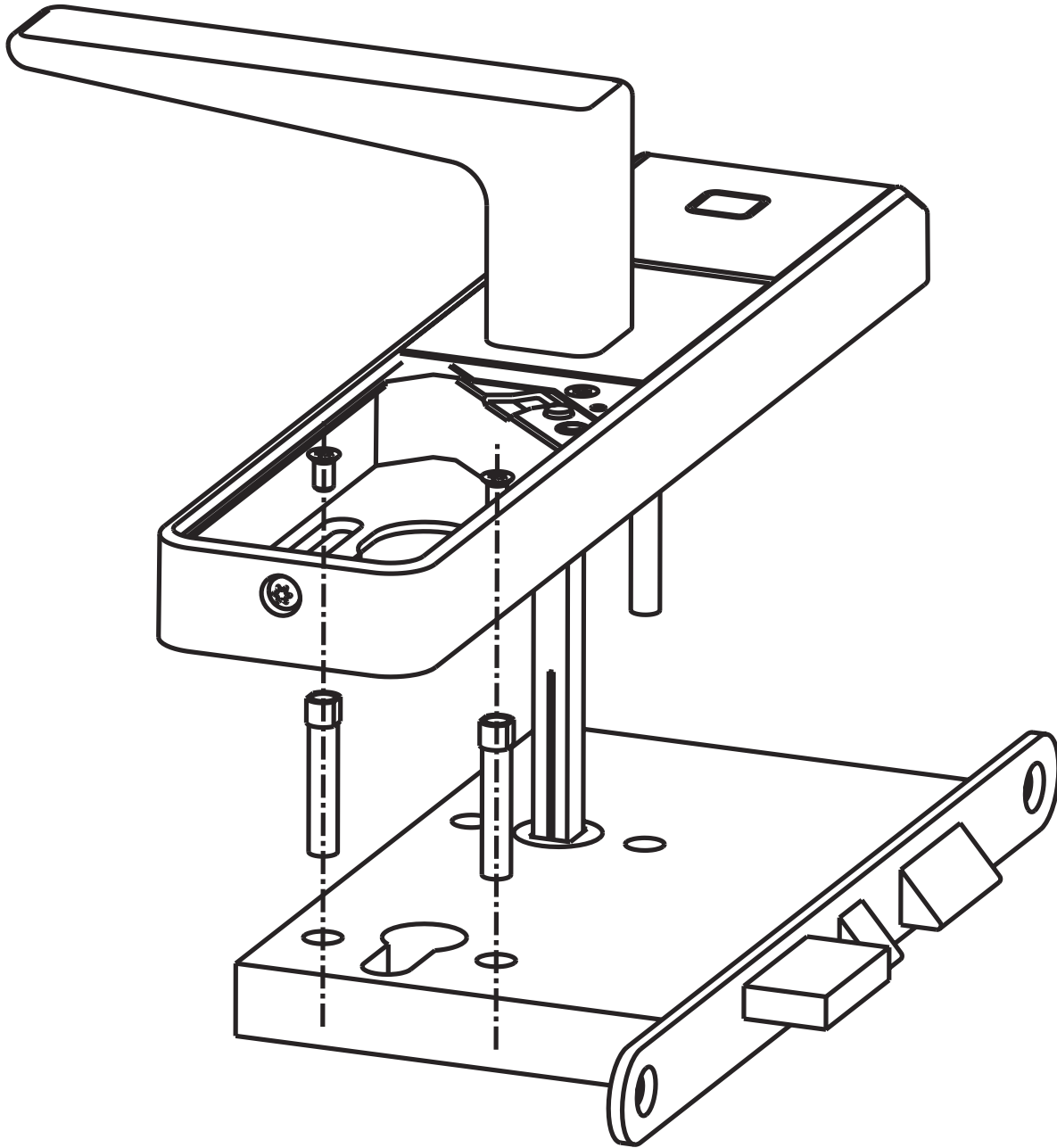


Warning:
Install only on
a mortise with
anti-panic and
an auxiliary
dead latch
(Anti-Pick sys-
tem)

Inventory Kit



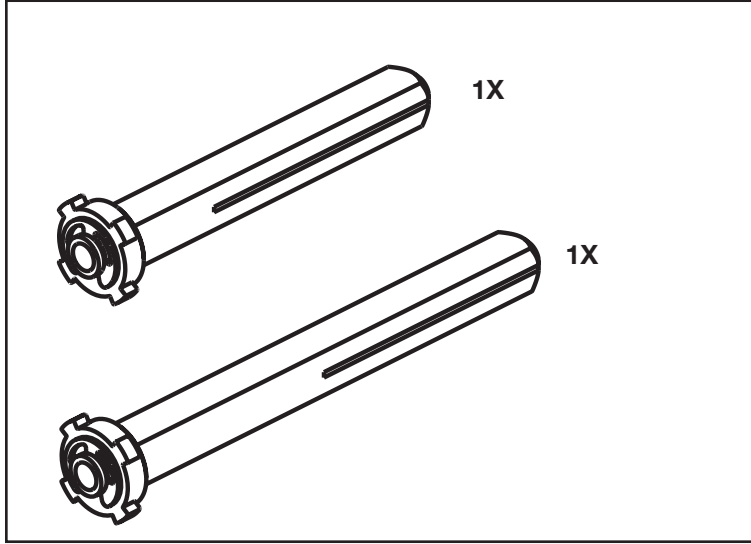
3- ALIGN POSTS WITH MORTISE (Rose Mount Only)



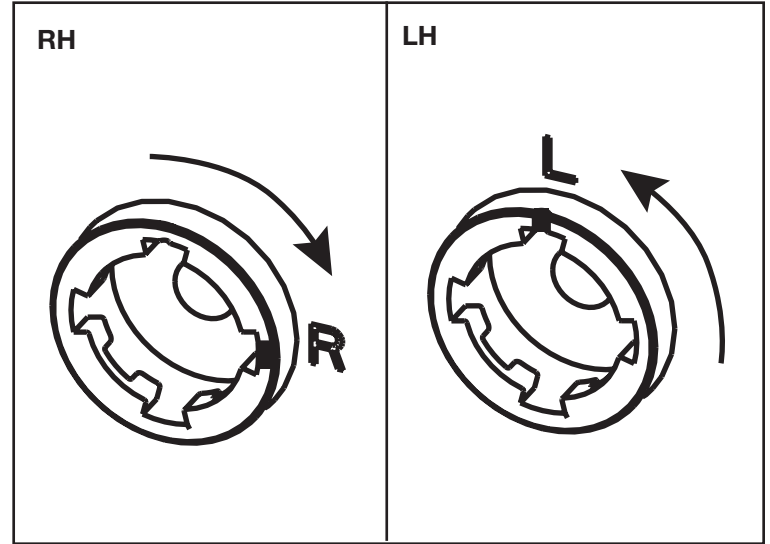
Ensure Mortise lock case includes an anti-pick and anti-panic function

4- SELECT & INSTALL SPINDLE

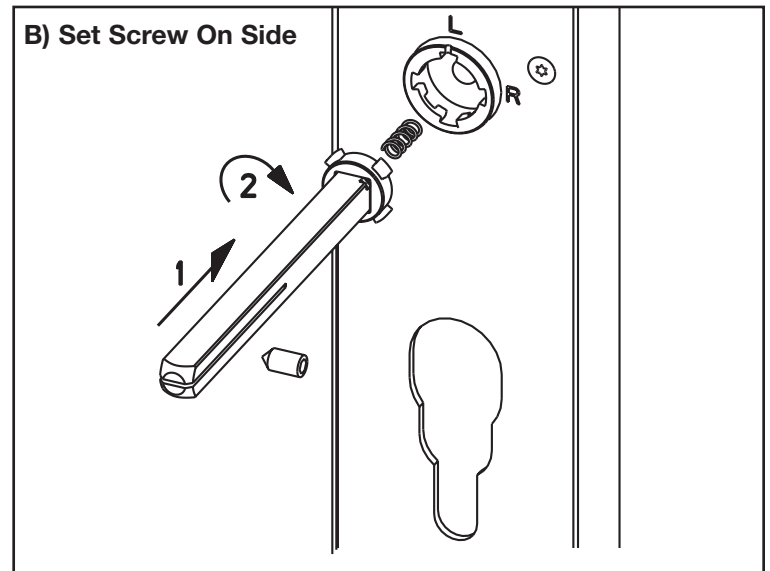
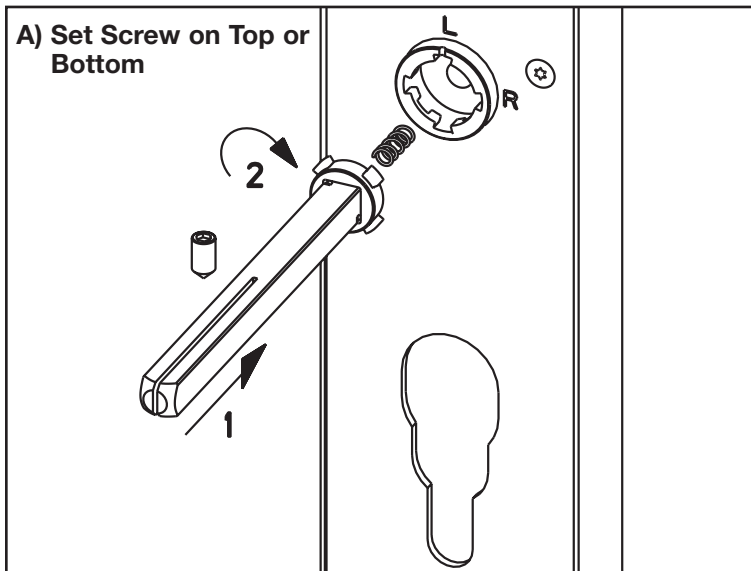
1- Choose Correct Spindle



2- Check Handing: Adjust for Right Hand (RH) or Left Hand (LH)

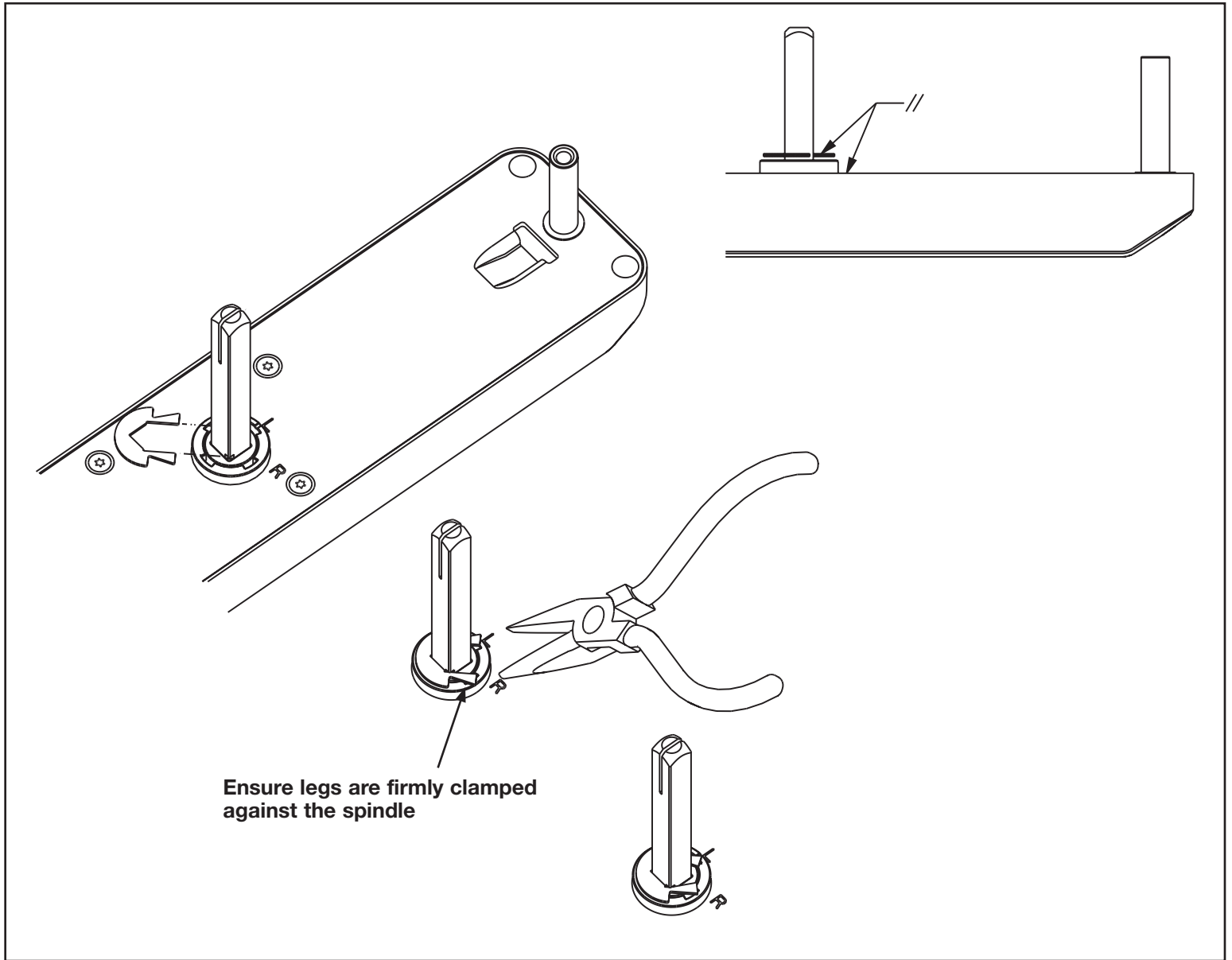


3- Insert Spindle: Check groove is in line with the inside lever set screw position after insertion.

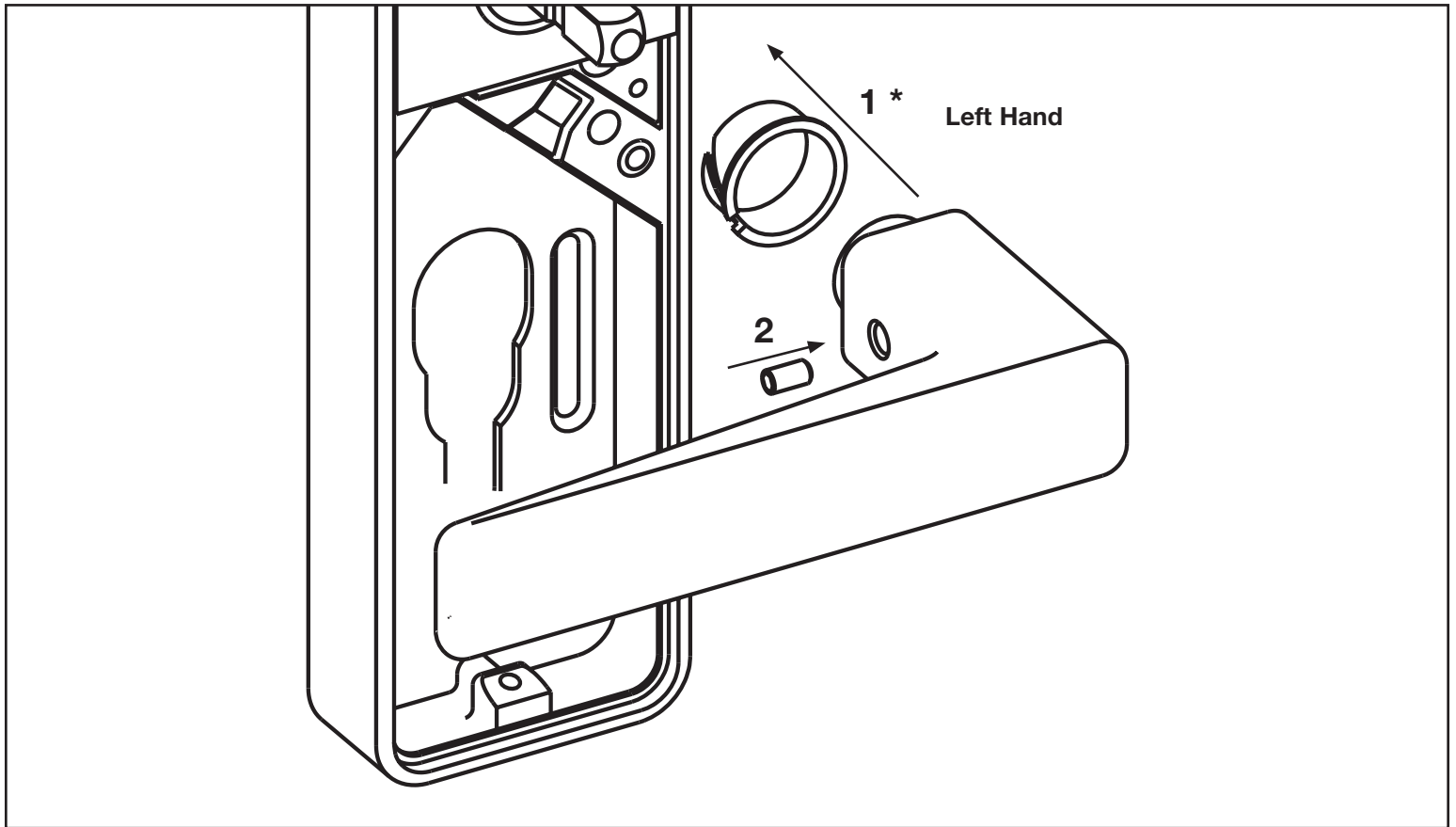


4- SELECT & INSTALL SPINDLE

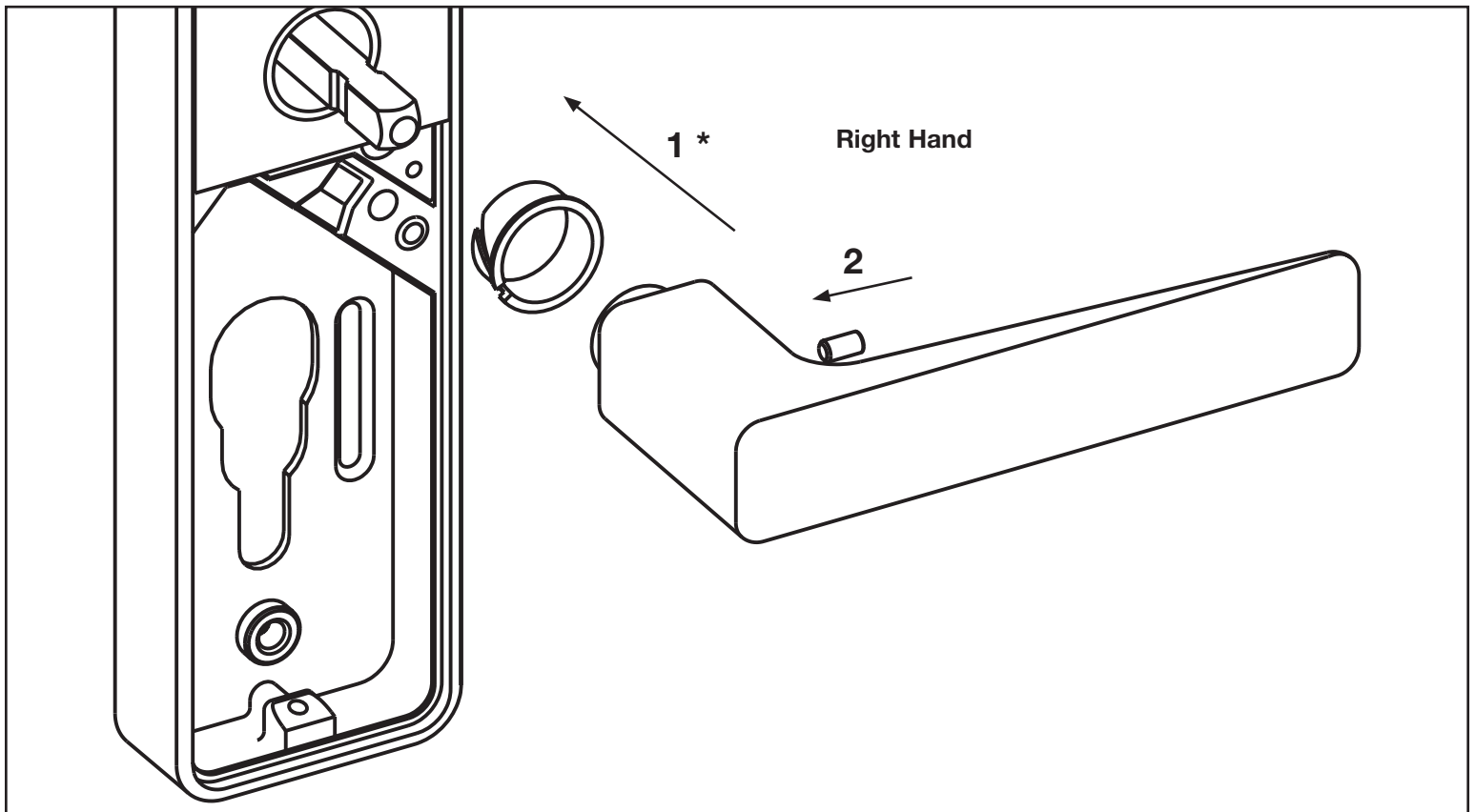
4- Attach and Clamp Spindle Clip to Spindle as shown.



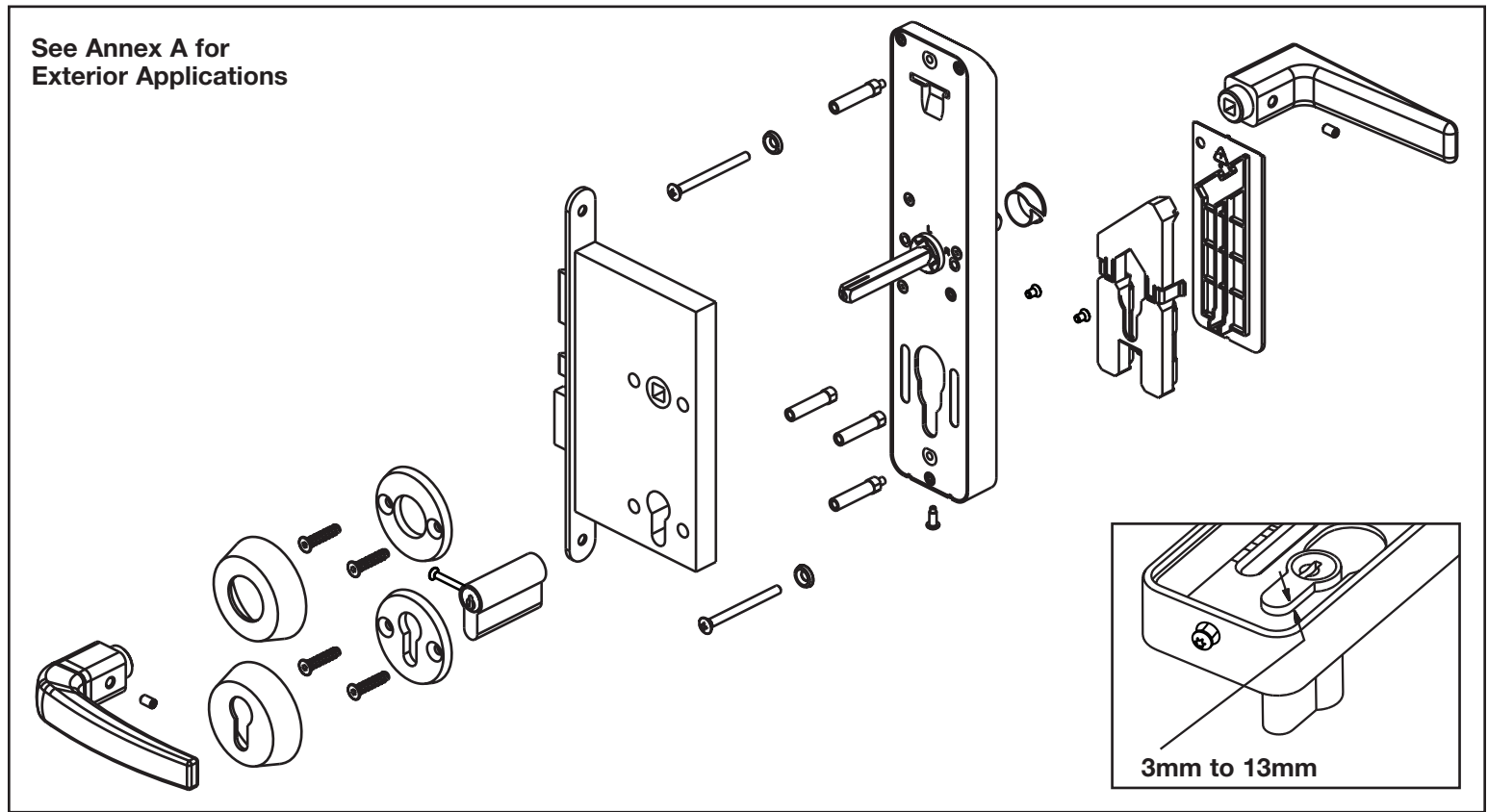
5- INSTALL OUTSIDE LEVER



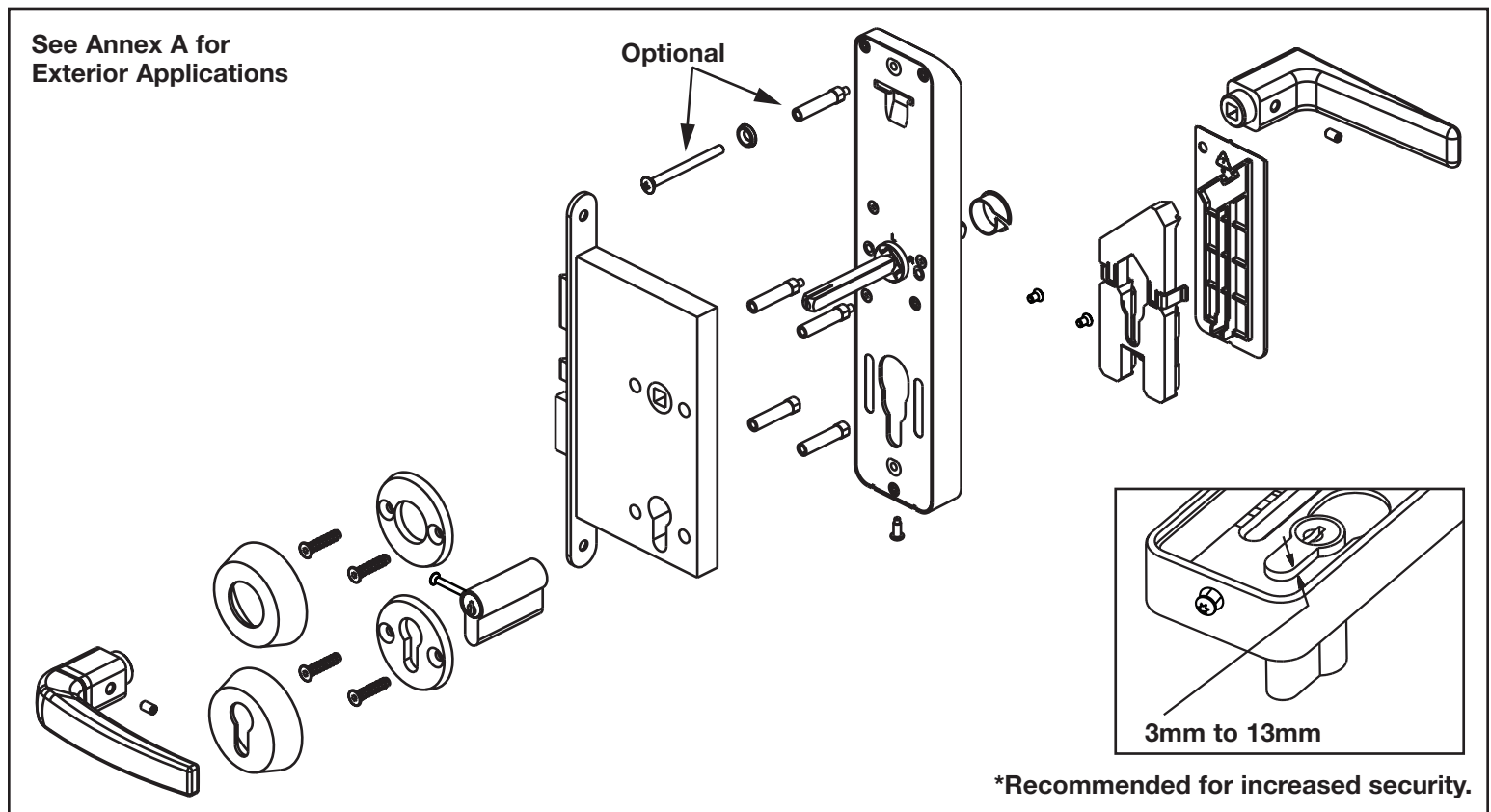
*** N.B.** Hold down the outside lever against the outside housing while tightening the lever set screw.



6- INSTALL LOCK ON DOOR - Back Plate Mount (Key Override)

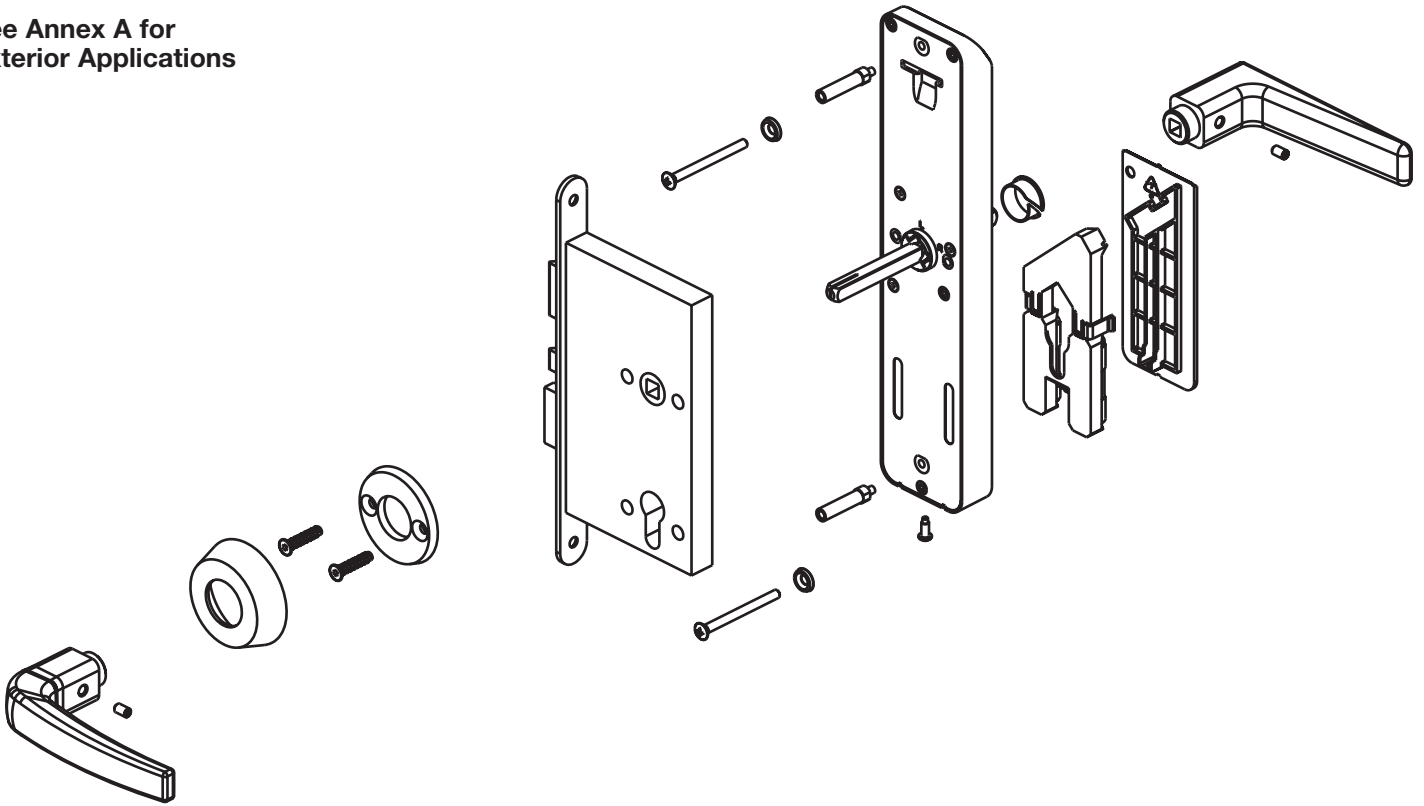


6- INSTALL LOCK ON DOOR - Rose Mount (Key Override)



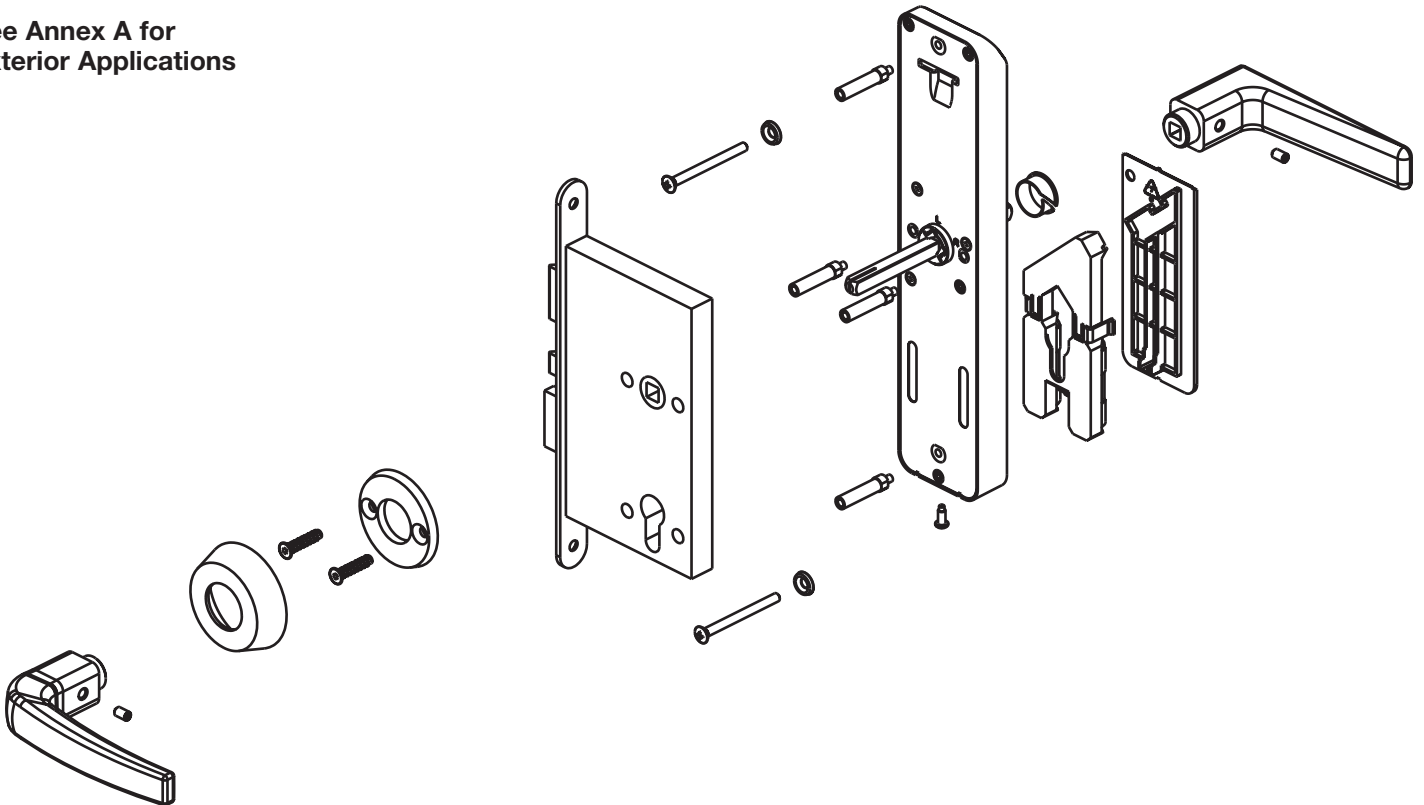
6- INSTALL LOCK ON DOOR - Back Plate Mount (No Key Override)

See Annex A for
Exterior Applications

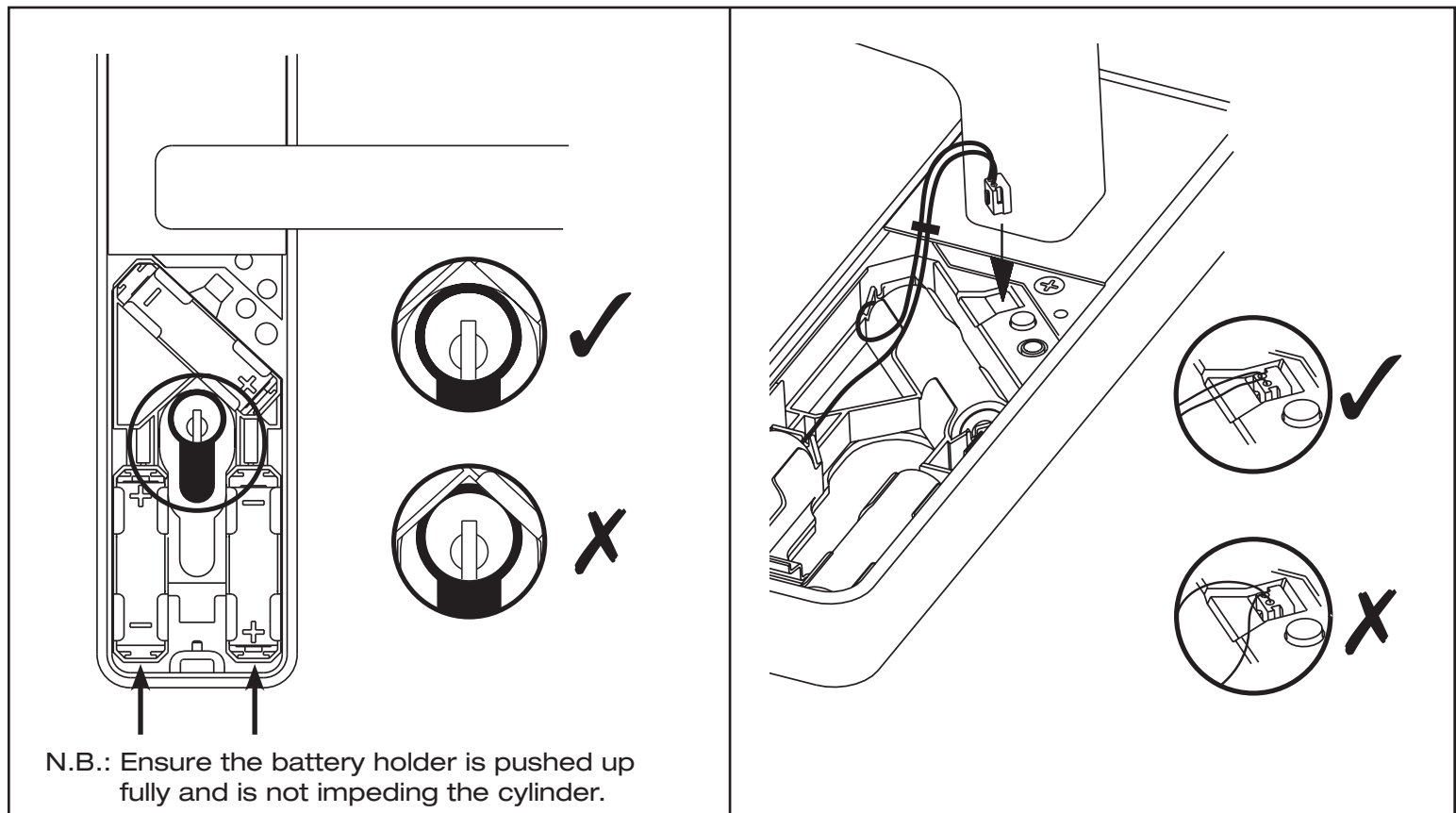


6- INSTALL LOCK ON DOOR - Rose Mount (No Key Override)

See Annex A for
Exterior Applications



7- PLUG BATTERY HOLDER

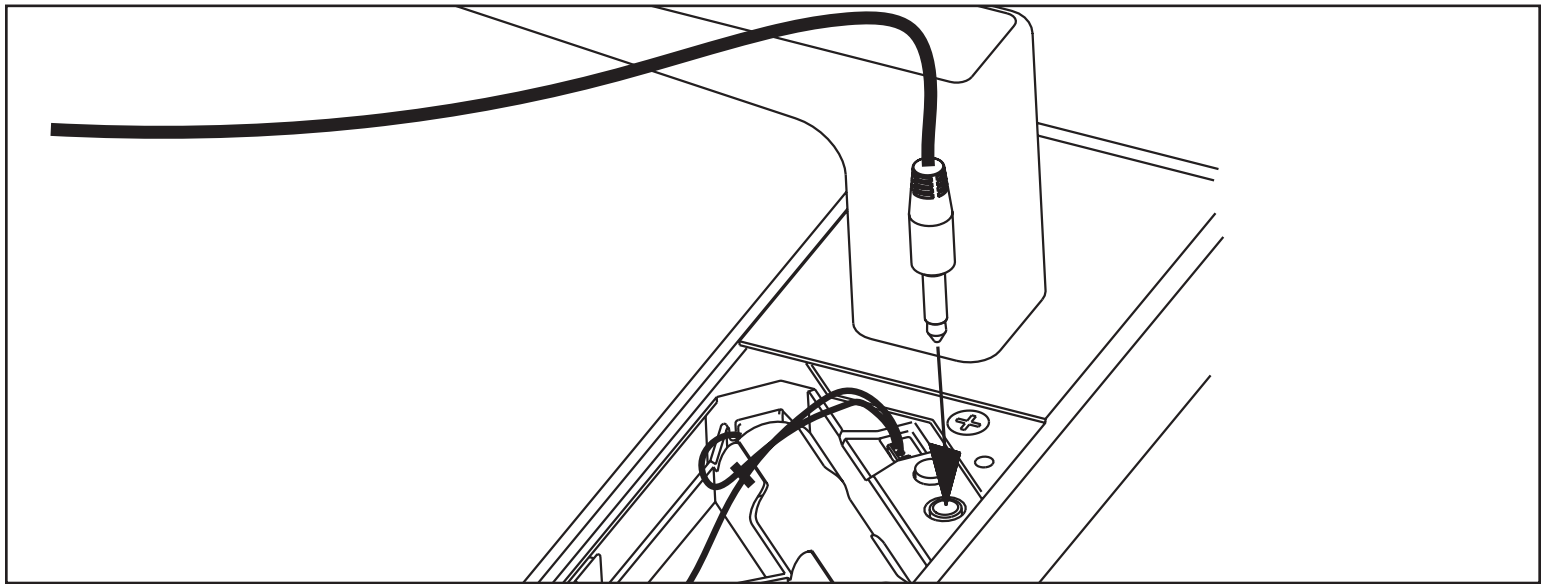


8- TEST LOCK FUNCTIONALITY (To be done while door is still open)

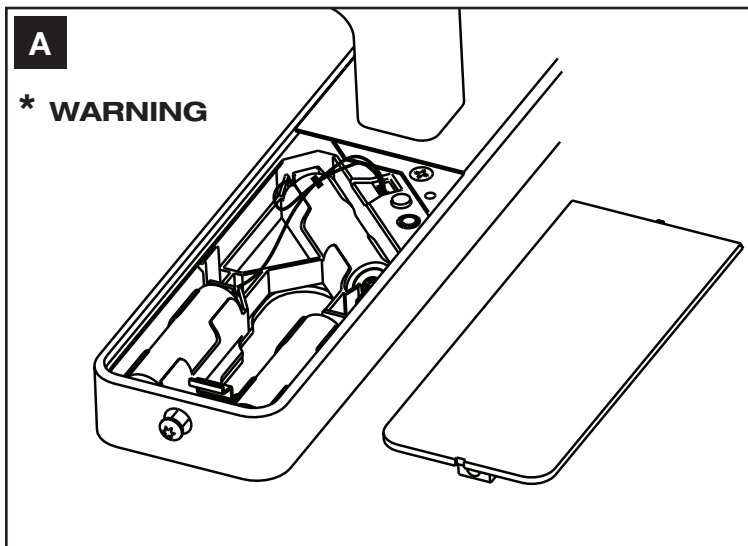
Make Sure Room Door is Open

- A - Present Keycard: Test Key (ILCO) / Zone 1 Key (Saflok)**
- B - Confirm LED Response: Green & Red (ILCO) / Green (Saflok)**
- C - Rotate Outside Lever to Check Bolt Retraction**
- D - Release Outside Lever, Should Move Freely**
- E - Rotate Inside Lever to Check Bolt Retraction**
- F - Check Bolt Projection from Thumbturn & Key**

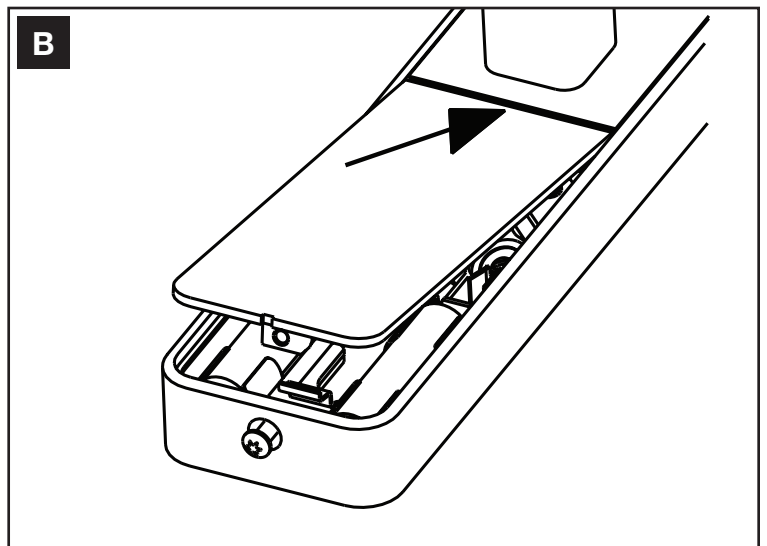
9- PROGRAM LOCK - With Jack Cable



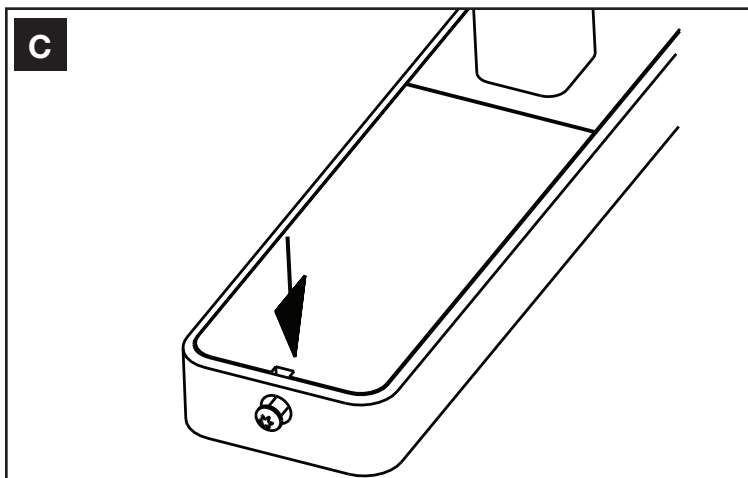
10- INSTALL BATTERY DOOR



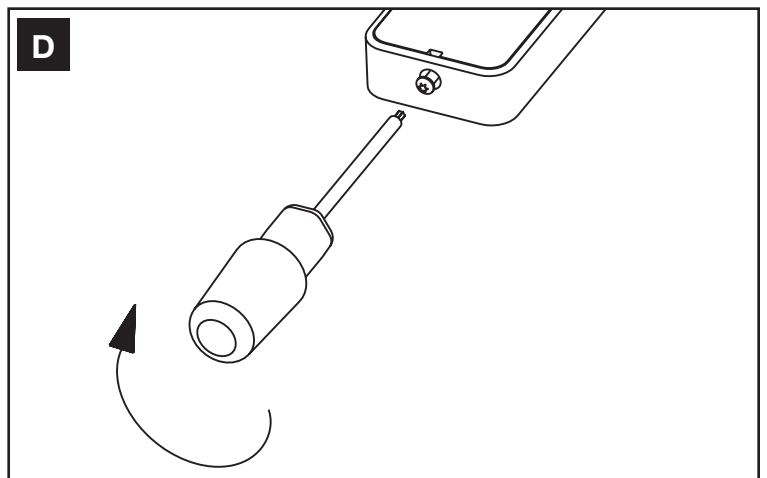
A
* WARNING



B



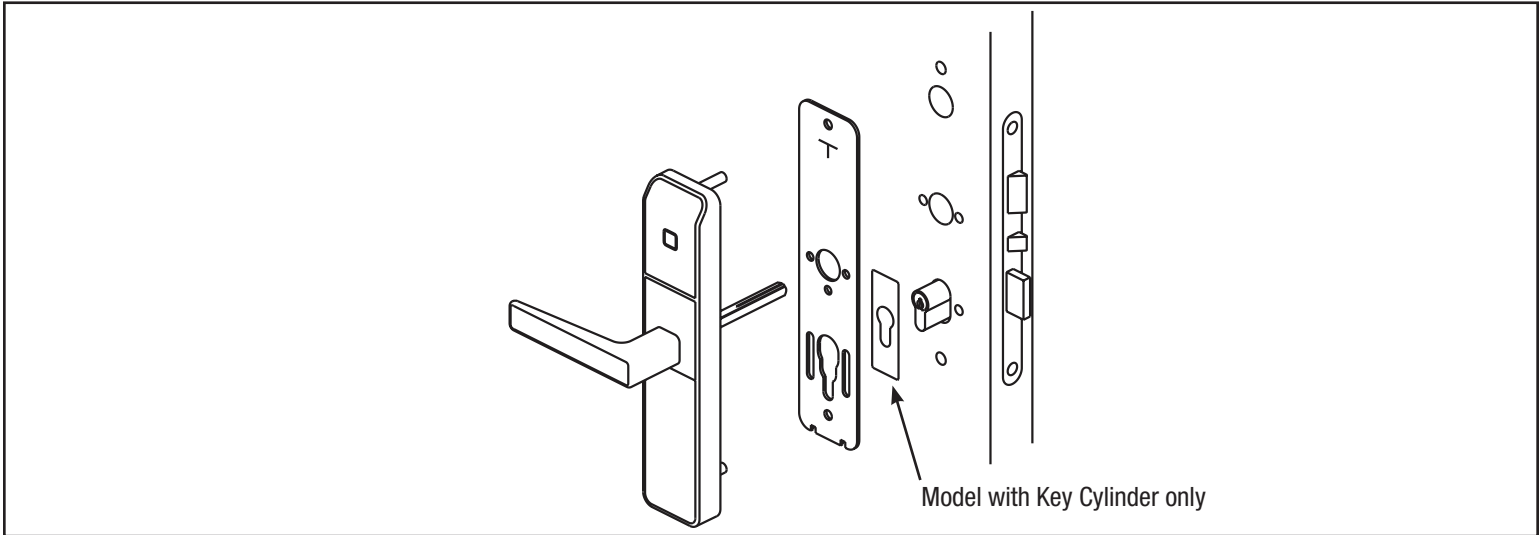
C



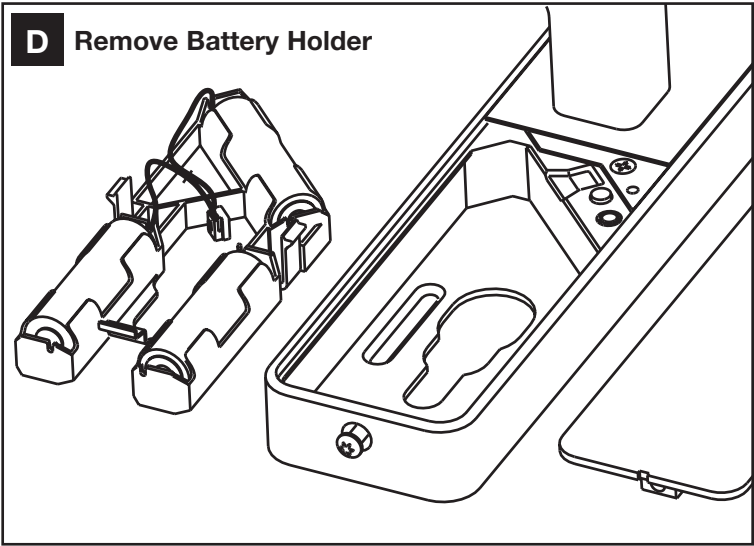
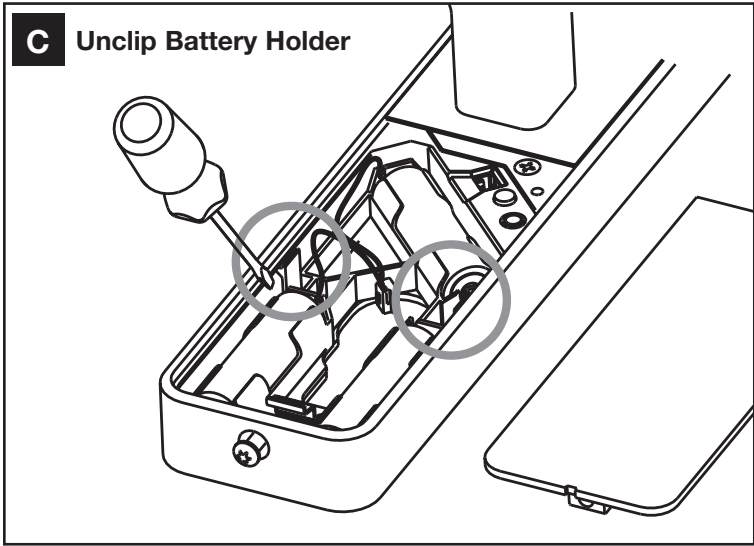
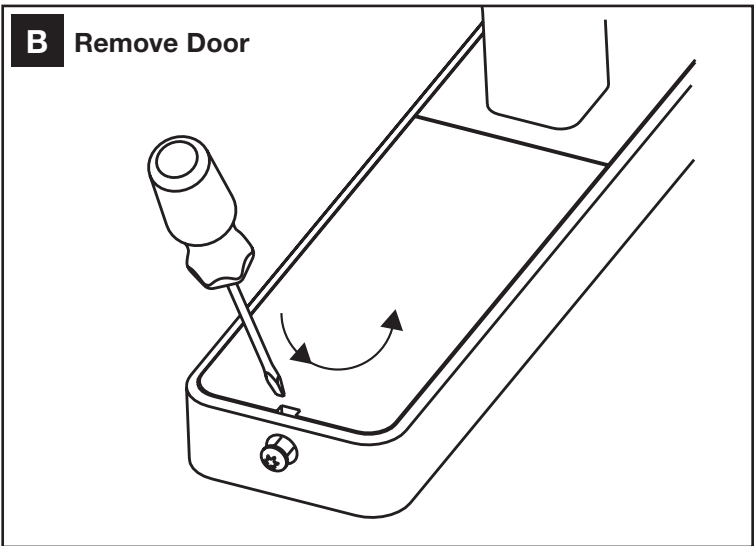
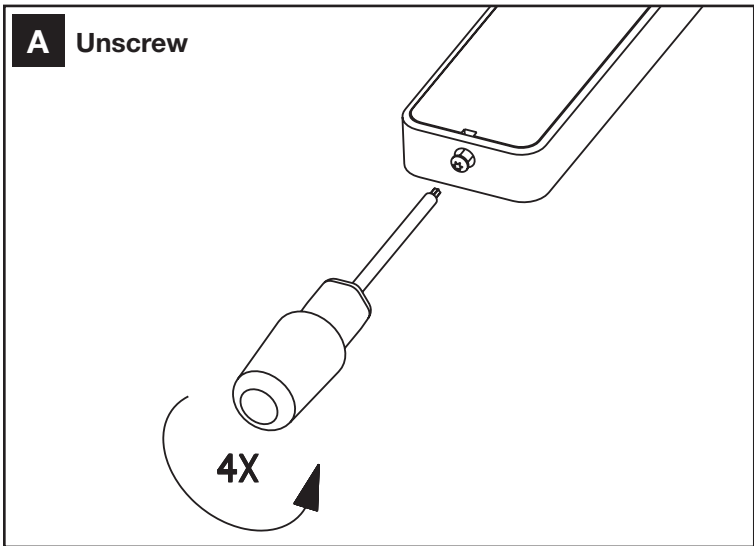
D

*** Warning:** For security reasons, lock must be programmed BEFORE installing the battery door. Every time the battery door is removed pass an emergency card or connect lock to programming device to reset the tamper alarm. Audit information is not affected.

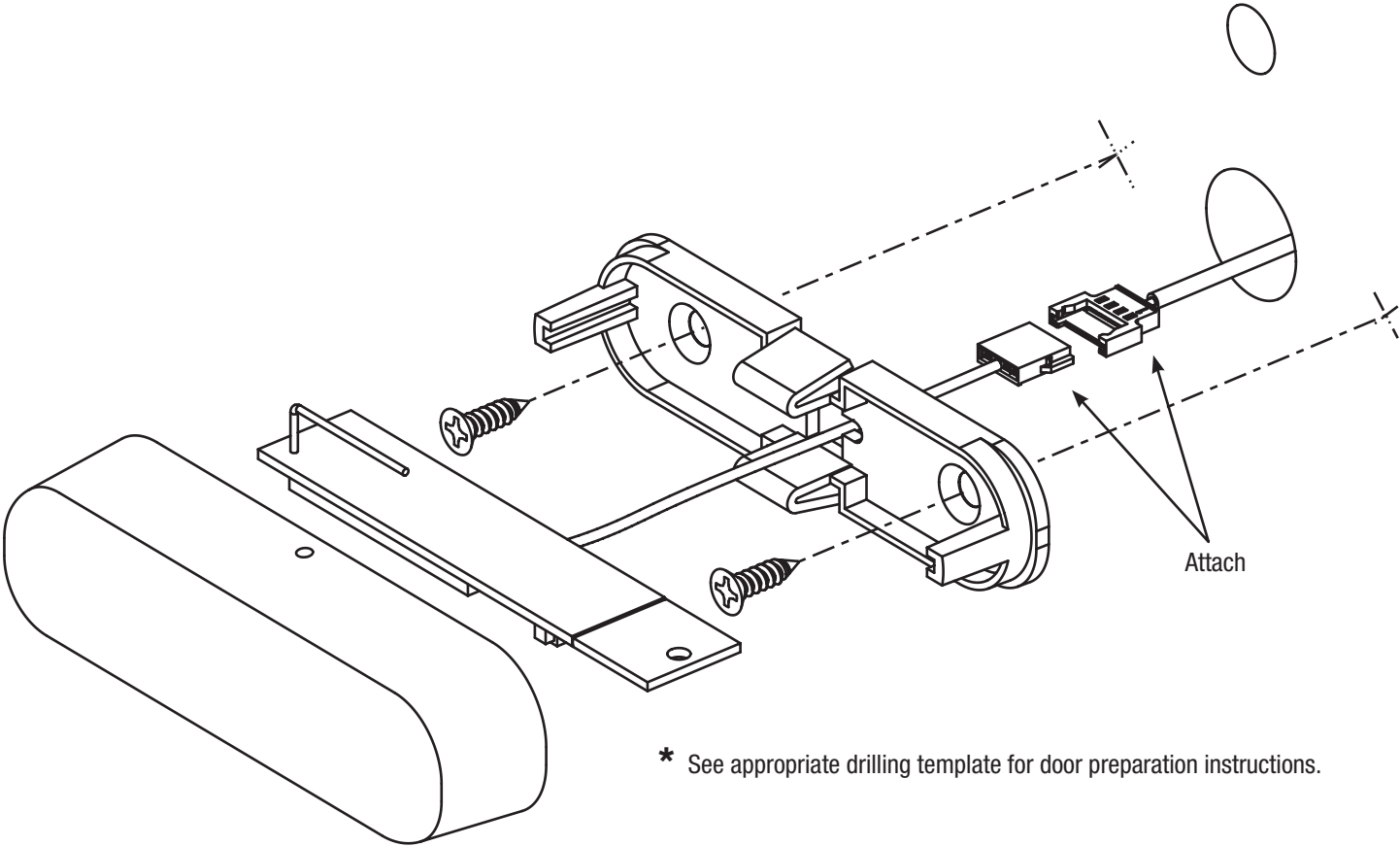
Annex A • Install Outside Housing with Gasket and Cylinder Shield
(Exterior and Ocean Front Versions)



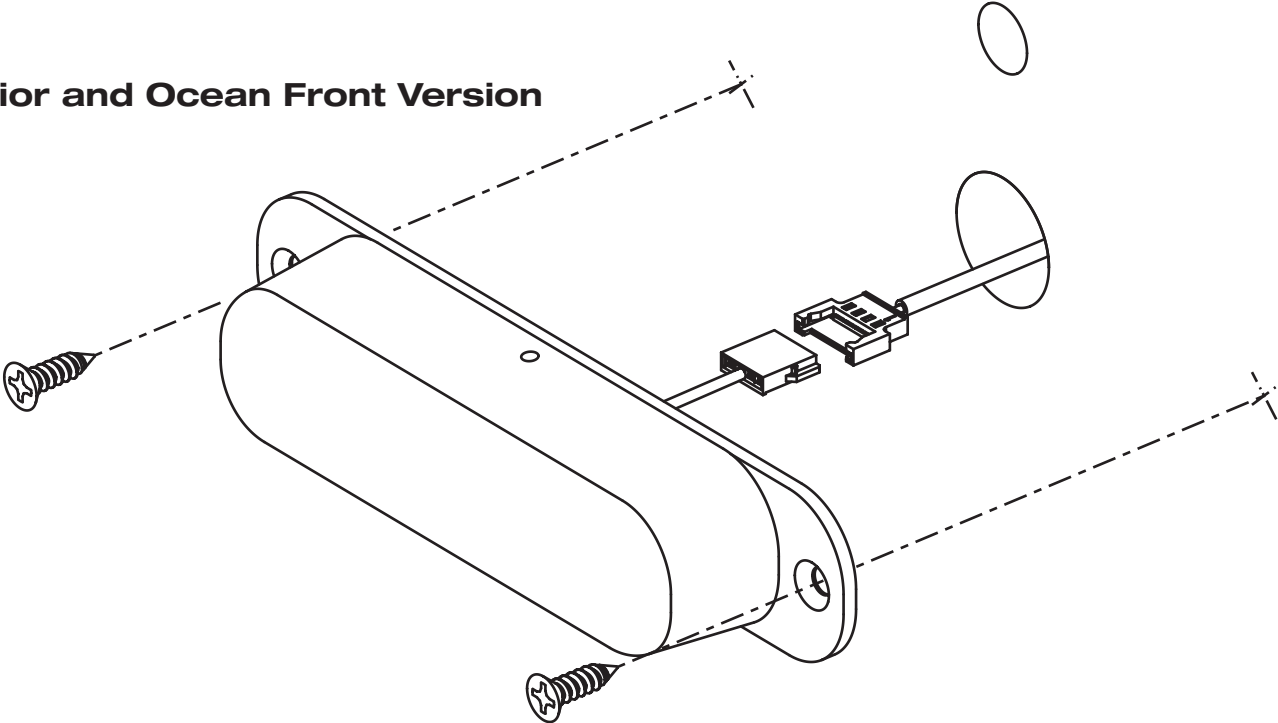
Annex B • Remove Battery Holder



Annex C · Install the Bluetooth/Messenger module



Exterior and Ocean Front Version



Kaba

Customer Services & Support

ILCO: 1.877.468.3555 / + 1.514.340.9025

Saflok: 1.800.999.6213 / + 1.248.837.3700

General Information:

www.kabalodging.com

Online Consumable Orders:

www.ilcostore.com

www.saflokstore.com

To access all of our easy steps, please visit our Support Website:

www.kabalodgingsupport.com

PK3616_T_07_15