

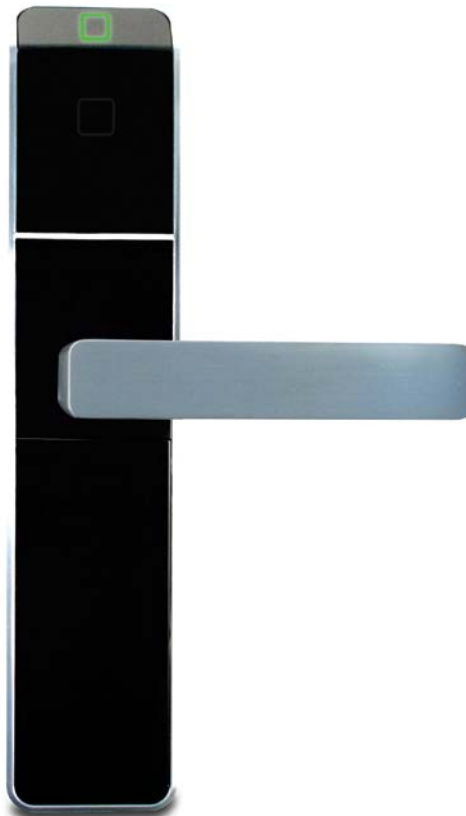
## Specification for Confidant RFID third party levers

Revision – June 2014

*This document outlines the different requirements for third party lever compatibility with the Kaba Confidant RFID lock system.*

*This document is made for outside lever (options 1 to 3) and inside lever (options 4 and 5). Please note the outside lever handle is always installed on a 8 mm spindle while the inside lever handle can be installed with 7 mm, 8 mm or 9 mm spindle.*

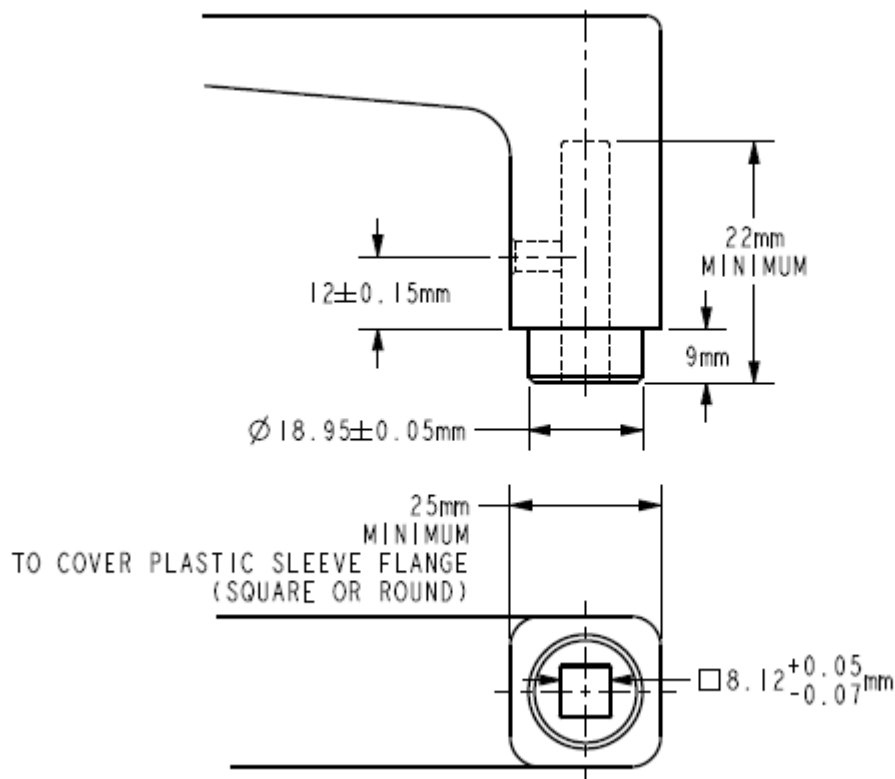
**IMPORTANT:** *The selected third party lever handles must not require more torque to come back to a horizontal resting position than the current Kaba Confidant RFID lever handles. This is important to ensure the lever handles always come back to a horizontal resting position in order for the lock to operate properly.*



## OUTSIDE LEVER OPTION 1 – LEVER SHANK IDENTICAL TO CONFIDANT RFID:

**Objective:** duplicate the attachment dimensions of the original Kaba lever

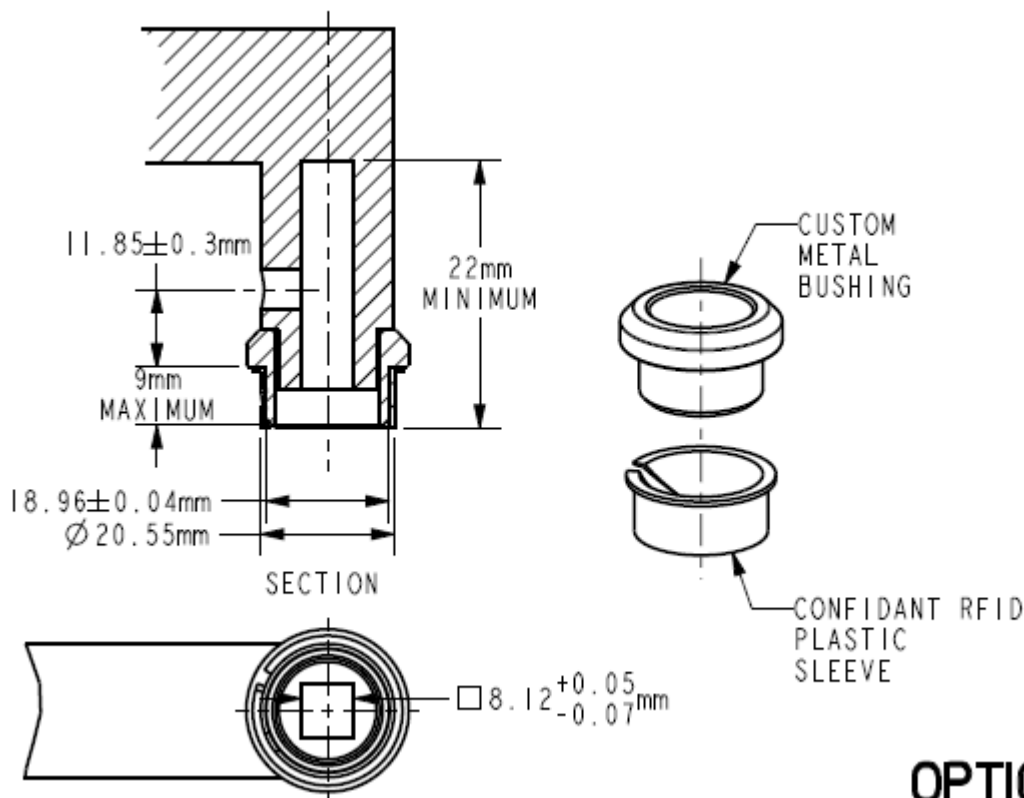
- Lever shank OD: 18.95 +/- 0.05 mm
- Lever shank length: 9 mm maximum
- Set screw: Required
- Snap ring groove: Not required
- Spindle hole size: 8.12+0.05/-0.07 mm for 8 mm spindle
- Comment: A plastic sleeve (provided by Kaba) will be used between the lever shank and the existing steel bushing staked in the escutcheon plate provided by Kaba, dimensions accounted for in the above.



## OUTSIDE LEVER OPTION 2 – CUSTOM METAL BUSHING WITH CONFIDANT RFID PLASTIC SLEEVE

**Objective:** provide a metal bushing to adapt for the shank diameter differences from the original Kaba lever, using the Kaba plastic sleeve

- Metal bushing outside size: 18.96 +/- 0.04 mm (critical per drawing below)
- Metal bushing length: 9 mm for part engaging in the Kaba plastic sleeve
- Metal bushing material: Stainless steel recommended
- Lever shank length: Bushing length according lever shank length
- Lever set screw: Required
- Lever snap ring groove: Not required
- Spindle hole size: 8.12+0.05/-0.07 mm for 8 mm spindle
- Comment: Supplier to provide functional system made of compatible materials – all must fit snugly into existing steel bushing staked in the escutcheon plate and plastic sleeve that are provided by Kaba.



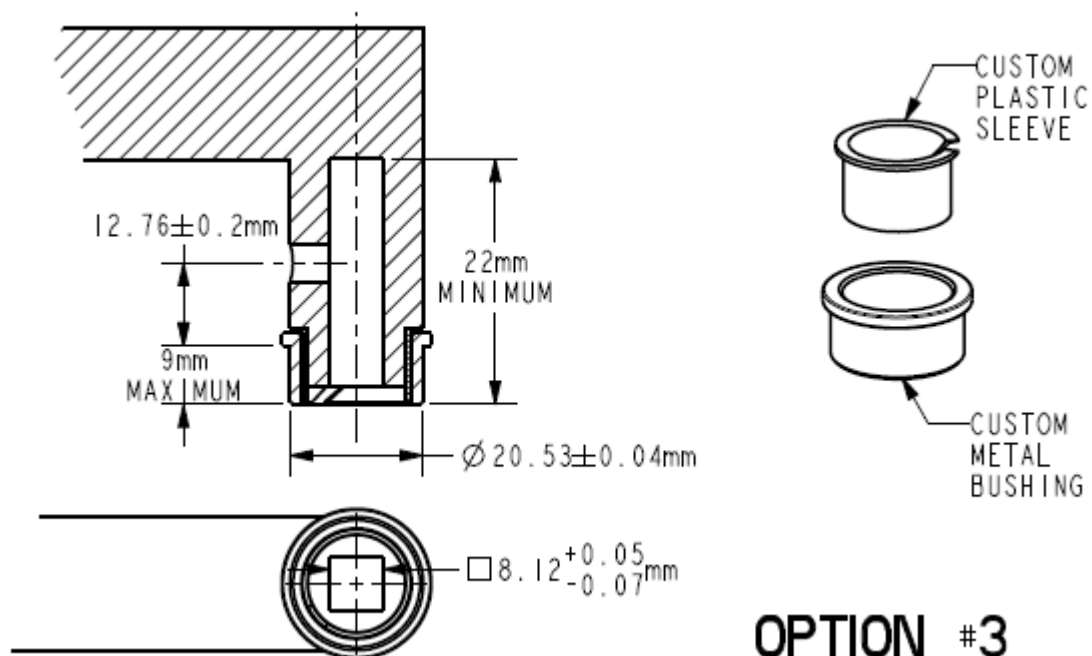
### OPTION #2

*Note: lever & metal bushing by third party*

## OUTSIDE LEVER OPTION 3 – CUSTOM METAL BUSHING AND PLASTIC SLEEVE

**Objective:** provide a metal bushing to adapt for the shank diameter differences from the original Kaba lever

- Metal bushing outside size: 20.53 +/- 0.04 mm (critical, per drawing below)
- Metal bushing length: 9 mm for part engaging in the lock bushing
- Metal bushing material: Stainless steel recommended
- Lever shank length: Bushing length according shank length
- Lever set screw: Required
- Lever snap ring groove: Not required
- Spindle hole size: 8.12+0.05/-0.07 mm for 8 mm spindle
- Comment: Supplier to provide functional system made of compatible materials – use of a plastic sleeve or bushing for free rotation is his choice based on materials and tolerances used, all must fit snugly into existing fixed bushing that is staked in escutcheon plate provided by Kaba.

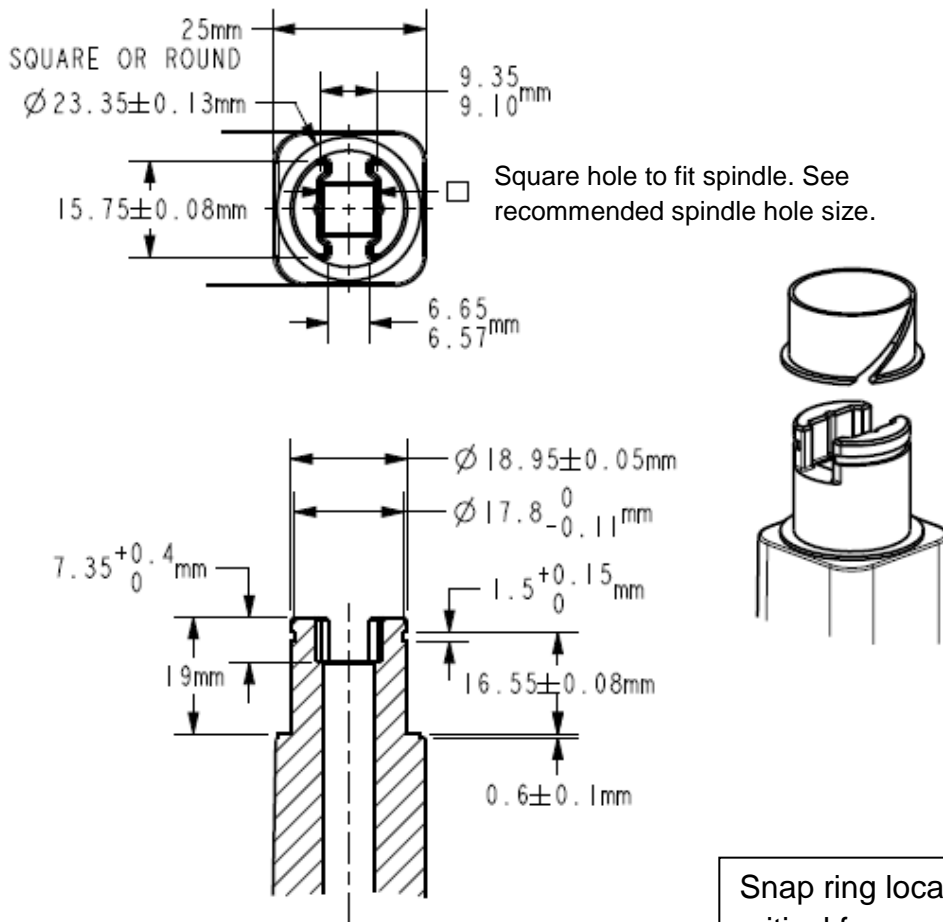


*Note: lever & bushing(s) by third party*

**INSIDE LEVER OPTION 4 - LEVER SHANK IDENTICAL TO CONFIDANT RFID**

**Objective:** duplicate the attachment dimensions of the original Kaba lever

- Lever shank OD: 18.95 +/- 0.05 mm
- Lever shank length: 19 mm
- Set screw: Not required
- Snap ring groove: Required, see drawing below for details
- Spindle hole size: 8.12+0.05/-0.07 mm for 8 mm spindle  
7.12+0.05/-0.07 mm for 7 mm spindle  
9.12+0.05/-0.07 mm for 9 mm spindle
- Comments: A plastic sleeve (provided by Kaba) will be used between lever shank and existing steel bushing that is staked in escutcheon plate provided by Kaba, dimensions accounted for in the drawing below.



**OPTION #4**

---

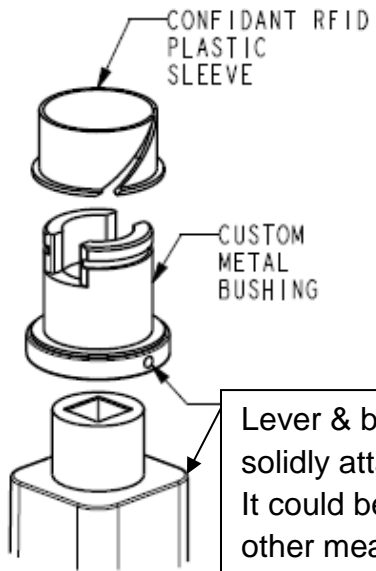
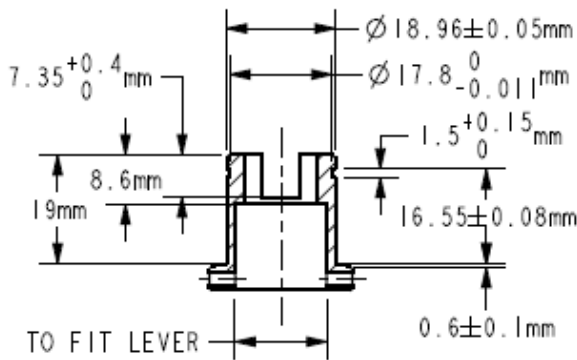
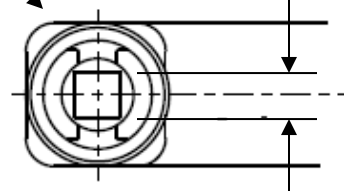
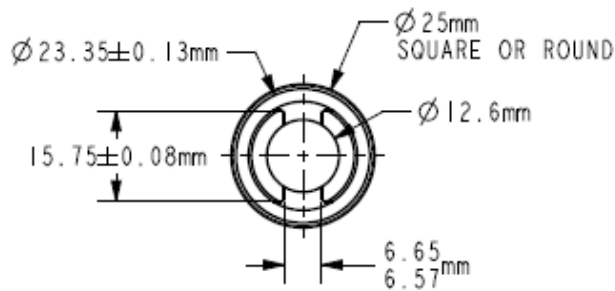
## **INSIDE LEVER OPTION 5 – CUSTOM METAL BUSHING WITH CONFIDANT RFID PLASTIC SLEEVE**

**Objective:** *Provide a metal bushing (solidly fixed to the lever) to adapt for the shank diameter and feature differences from the original Kaba lever*

- Bushing outside size: 18.96 +/- 0.04 mm
- Bushing length: 19 mm for part engaging into the escutcheon
- Lever set screw: Not required
- Lever snap ring groove: Required in bushing, see drawing below for details
- Spindle hole size:
  - 8.12+0.05/-0.07 mm for 8 mm spindle
  - 7.12+0.05/-0.07 mm for 7 mm spindle
  - 9.12+0.05/-0.07 mm for 9 mm spindle
- Comments: Lever must be solidly attached to the bushing that is to be provided by the third party, it could be done in a permanent fashion. It must be able to withstand the torque of lever rotation and pull when opening the door. This assembly must rotate freely in the plastic sleeve (provided by Kaba).

Orientation of square hole vs bushing as shown here

Square hole to fit spindle. See recommended spindle hole size.



Lever & bushing must be solidly attached together. It could be with 2 pins or other means. Must be strong enough to resist a minimum of 150 Kg (330 lbs) pull force. Center must not be blocked so the spindle goes through.

**OPTION #5**

*Note: dimensions show third party bushing to be attached to lever*