

# System 6000 software

Property Network Diagram &  
Minimum Equipment Recommendations

## dormakaba SAFLOK™ Server

### Operating system:

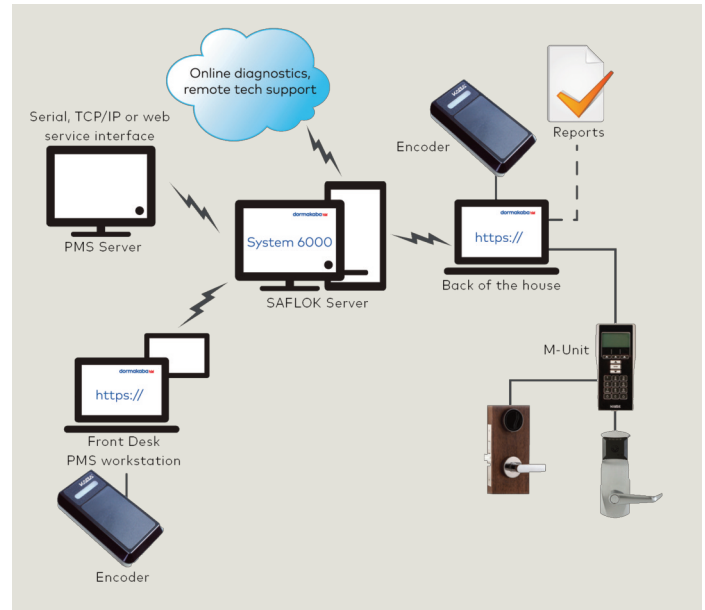
- Microsoft Windows Server 2016 - English only
- Windows Server 2012 R2 Standard - English only (suitable for all site size deployments)
- Windows 10 Enterprise - English only (suitable only for sites with a maximum lock count of 200 locks coupled with a maximum of two encoders)

### Minimum hardware specifications:

- 2GHz/64-bit/quad core CPU (or faster)
- 16 GB/64-bit RAM (or higher)
- 100GB available hard drive space
- Virtual Machine environments are supported with same minimum resource
- If more than two (2) workstations are to be used with Saflok, an ethernet network card is required
- If connecting an encoder and/or handheld LPI device directly to server, at least one (1) USB 2.0 port must be available for encoder connection and another for handheld LPI connection
- If including a Serial property management system (PMS) interface, at least one (1) dedicated Serial port must be available. TCP/IP interface support is also available
- Internet access is required to enable dormakaba remote real-time support via the web
- Anti-virus software is highly recommended
- UPS and surge protection with equipment warranty are recommended

### Client Workstation(s)

- Operating system: Windows 8.1 Enterprise | Windows 10 enterprise (English only)\*
- 8 GB of available hard drive space
- If connecting an encoder and/or handheld LPI device directly to workstation, at least one (1) USB port must be available for encoder connection and at one (1) USB port for handheld LPI connection; encoders can also utilize a TCP/IP (network) connection
- Anti-virus software is highly recommended
- UPS and surge protection with equipment warranty are suggested



### Notes:

- Appropriate server and client licensing is required
- All network installations and maintenance are the responsibility of the individual customer and not dormakaba.
- Due to the wide performance variability of different manufacturers' hardware, dormakaba cannot guarantee software and hardware compatibility with all computers.
- The customer is responsible for maintaining all software updates (e.g., Windows operating system & anti-virus protection).
- If using a Serial interface in a Virtual Machine environment, the Virtual Machine host computer must have one (1) available dedicated Serial port that can be allocated to the Saflok Server Virtual Machine.

\*2nd Generation Intel Core i5 (2GHz or greater) 3rd or 4th Gen Core i5 processor or equivalent or faster CPU / 8 GB or greater RAM