

Opens doors with just a touch

TouchGo™ by dormakaba



TouchGo – more convenience at the door

The electronic locking system with TouchGo functionality not only means you can do away with searching for your keys, but also makes accessing rooms considerably easier. With just a touch of the door handle, the lock can recognise whether you are authorised to enter.



What exactly is TouchGo?

TouchGo is based on RCID (Resistive Capacitive Identification), technology which uses the body's natural static electricity to transfer access permissions.

This advanced technology ensures maximum security and reliability.





TouchGo for nursing homes

Improved sense of well-being for both residents and staff

Having access to the right rooms plays a key role in nursing and retirement homes. TouchGo ensures privacy and security, refusing access to anyone without authorisation. Residents can gain access to their rooms without having to remember a code or search for a key. The door will recognise whether the person is authorised to access the room with a mere touch of the handle. This way, TouchGo guarantees supreme security and convenience.

Your hand is your key

Using TouchGo is incredibly easy. One touch of the door handle is all that's needed to open the door. As soon as the resident has entered their room, the door locks from the outside but remains open from the inside. The transponder fits easily in a pocket, or can be kept on a wheelchair or around an arm or neck, so users no longer have to hopelessly search for their key.

More privacy for residents

Residents in a nursing home should feel calm and comfortable without having to worry about their privacy. TouchGo provides them with higher security and certainty.

Fewer conflicts, less stress for staff

Taking care of elderly people and those with dementia demands a lot of time, effort and energy, so it's important to find solutions to make day-to-day life easier and reduce stress. TouchGo helps staff with their daily work by minimising conflict situations and, in turn, the workload.

Besides residents' bedrooms, TouchGo can also be used to keep other rooms such as wards, kitchens, offices and treatment rooms secure. Choose from key fobs, card holders or wristbands as access media, depending on your needs.

**"It's lovely to see when residents really feel at home."
Ruana Lehmann, Healthcare Specialist**



TouchGo for the office

Hands full and searching for a key – we've all been there

It's a typical day at the office. There's only a few minutes to go until that important team meeting. You grab your mobile and laptop and rush down the stairs into the neighbouring building. Your badge, however, is stuck in your inside jacket pocket, and one wrong move will see your laptop and all the important files inside go flying.

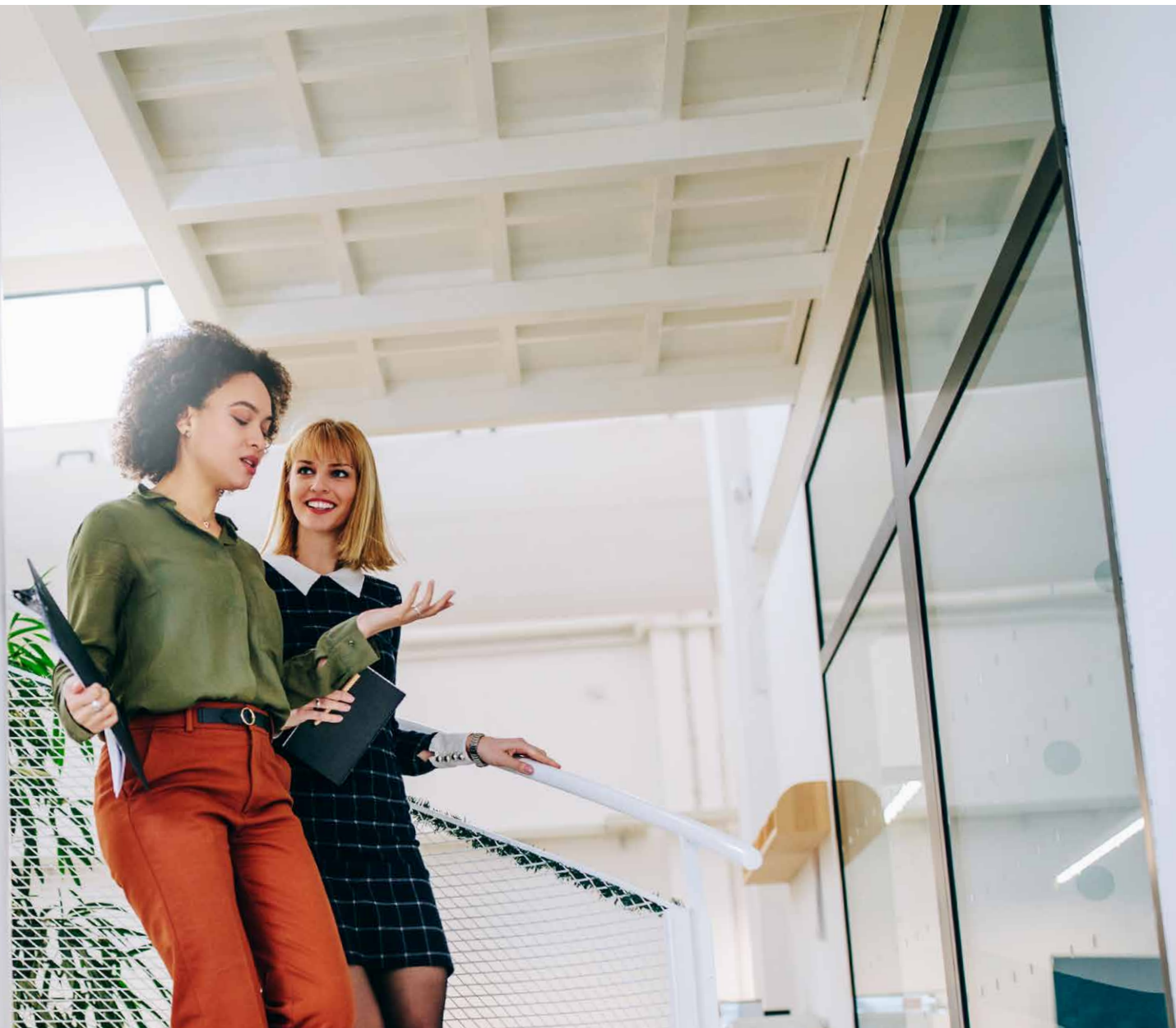
What wouldn't you give to be able to simply open the door with a free hand in situations like these? We've got you covered.

Seamless integration, supreme convenience

TouchGo not only offers advantages for residents and care staff; it also shines in business environments too.

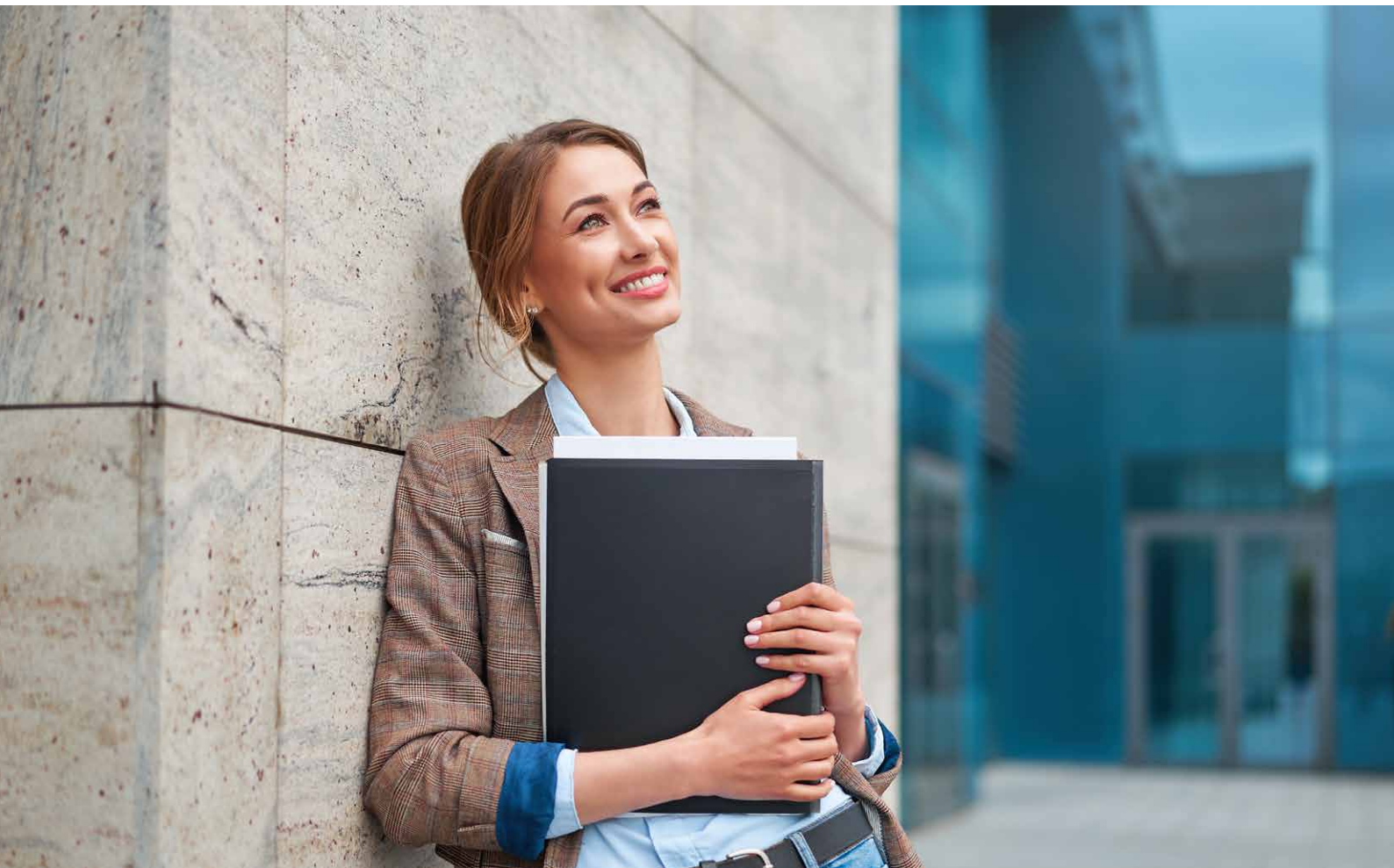
TouchGo enables quick access to a variety of rooms. There's no need to search for a key or badge – you can keep your hands free, and yet the high security standards you're accustomed to are maintained, as TouchGo secures external doors as well as premises with sensitive data.

TouchGo is designed for those who place great importance not only on security, but convenience too.



TouchGo: the advantages

- Free hands – your hand is your key
- Security and privacy – authorised access only
- Smart – the door can be opened at any time from inside, but remains locked to unauthorised individuals from the outside
- Easy to use – press the door handle down as normal to open the door
- 24/7 – TouchGo works and can be used around the clock
- Frees up time – well-organised doors reduce stress and workload
- Good organisation – you maintain an overview of all accesses
- Practical – if transponders are lost, they can be easily replaced and reprogrammed, avoiding security issues and the high costs of replacing an entire locking system.
- Holistic – TouchGo can be used in combination with our other products, providing increased protection for your investment and enabling the system to be gradually adapted depending on the environmental conditions and your needs



The TouchGo range

The basic configuration of TouchGo includes the c-lever pro door furniture with integrated TouchGo properties. This is available in different versions and enables quick, efficient access control.

The access system is flexible when it comes to programming and re-programming, meaning it's always kept up to date and can be seamlessly integrated into the existing security infrastructure.

The TouchGo convenience function can be seamlessly integrated into the dormakaba system environment, whether as a standalone or online solution.

RCID and RFID technology means that you can choose from either manual or software-aided programming. What's more, TouchGo E310 can, for one, be used in combination with any other RFID-based access system and, for another, can be seamlessly integrated with our own dormakaba access solution, such as:

- evolo Manager (KEM)
- exos
- MATRIX

c-lever pro with TouchGo

Electronic door lock E310 with TouchGo and RFID function

- Can be programmed for up to 1000 users
- RCID and RFID recognition
- Available in black or white
- Seamless integration into the dormakaba standalone or online environment



TouchGo key fob

- Combination of RCID TouchGo and RFID technology
- Available in black or white



TouchGo card holder and wristband

- Convenient access with card or wristband
- Combines your RFID badge with RCID TouchGo functionality



RCID – Resistive Capacitive Identification

All you have to do is carry the TouchGo transponder close to your body, e.g. as a key fob. Identification (door release) takes place by touching the door handle.

RFID – Radio-Frequency Identification

The transponder must be held against the door component for identification (door release).

Our dedication to sustainability

We are committed to sustainable development along our entire value chain and keep a close watch on our economic, ecological and social responsibility towards future generations. Sustainability at product level is an important, future-oriented approach in the field of construction. In order to give quantified disclosures of a product's environmental impact through its entire life cycle, dormakaba provides Environmental Product Declarations (EPD), based on holistic life cycle assessments.

www.dormakaba.com/sustainability



What we offer

Access automation solutions

Entrance automation
Entrance security



Access control solutions

Electronic access & data
Escape and rescue
Hotel access systems



Access hardware solutions

Closing mechanisms
Door hardware
Mechanical key systems



Services

Consulting and planning
Installation and commissioning
Maintenance and repairs



WN 05479251532. EN, 06/2024
Subject to changes without prior notice.
© dormakaba.



dormakaba.com

dormakaba
International Holding AG
Hofwissenstrasse 24
CH-8153 Rümlang
T +41 44 818 90 11
info@dormakaba.com
dormakaba.com