

LA GARD

Mechanical Combination Locks

3 Wheel (1985, 3330, 3390), 4 Wheel (1947), Key Lock, 4 Wheel 2270, Dials and Rings



3 Wheel Combination Lock

Model 1985

UL Group 1, EN1300B, VdS Class 2, IMP

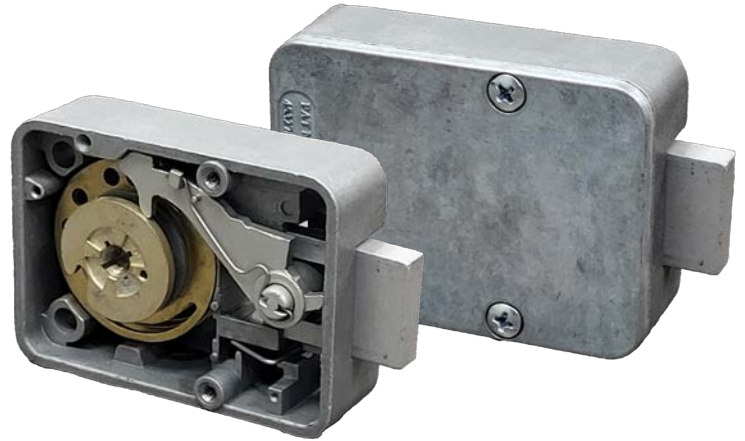
- Die-cast bolt and drop lever
- Standard footprint
- One million possible combinations
- Integrated re-locker, bolt blocking in case of manipulation of the lock cover
- Bolts available in standard 0.5" (12.7mm) and extended 1.50" (38.1mm)
- Drilled and tapped bolts available
- US (10-32) and Metric (4mm)
- Mounting: Right Hand, Left Hand, Vertical Up, Vertical Down



Model 3330

UL Group 2, EN 1300B, VdS Class 1

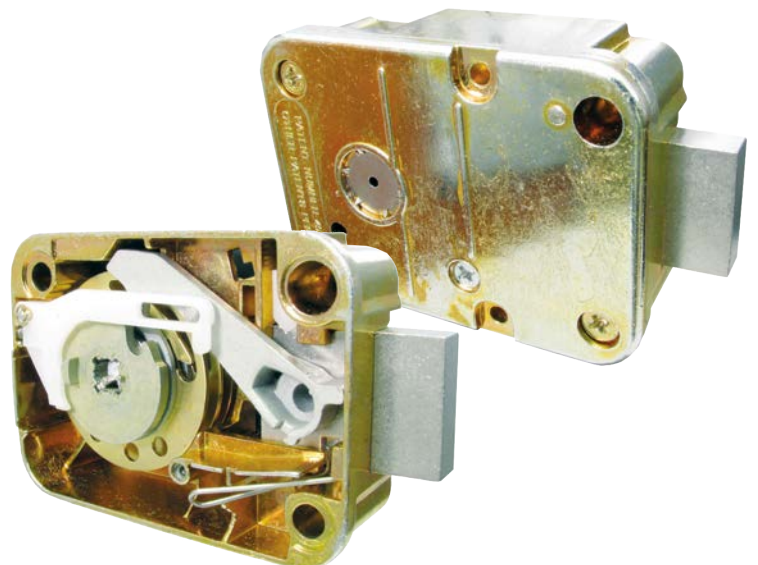
- Die-cast bolt and drop lever
- Standard footprint
- One million possible combinations
- Changeable 3 wheel combination lock with deadbolt
- Combination change requires access to the back of the lock and Change Key
- For Safes CEN L - CEN IV
- Mounting: Right Hand, Left Hand, Vertical Up, Vertical Down



Model 3390

UL Group 2M, EN1300B, ECB-S, VdS Class 2, IMP, A2P

- Sintered steel bolt and die-cast drop lever
- Standard footprint
- One million possible combinations
- Integrated re-locker, bolt blocking in case of manipulation
- Thru-case mounting
- Bolts available in standard 0.5" (12.7mm) and extended 1.50" (38.1mm) lengths
- Drilled and tapped bolts available US (10-32) and Metric (4mm)
- Mounting: Right Hand, Left Hand, Vertical Up, Vertical Down

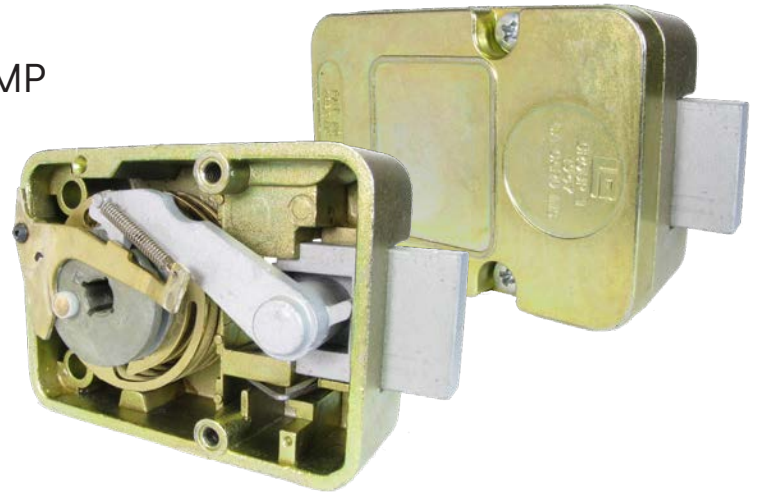


4 Wheel Combination Lock

Model 1947

UL Group 1, EN1300C, VdS Class 3, IMP

- Die-cast bolt and drop lever
- Standard footprint
- One hundred million possible combinations
- Integrated re-locker, bolt blocking in case of manipulation
- Bolts available in standard 0.5" (12.7mm) and extended 1.50" (38.1mm) lengths
- Drilled and tapped bolts available US (10-32) and Metric (4mm)
- Mounting: Right Hand, Left Hand, Vertical Up, Vertical Down



Model 2270

UL Type 2

- Four brass wheels for long life
- Standard footprint
- Integrated re-locker, bolt blocking in case of manipulation
- Key retained when in open position
- Bolts available in standard 0.5" (12.7mm) and extended 1.50" (38.1mm) lengths
- Drilled and tapped bolts available US (10-32) and Metric (4mm)
- Mounting: Right Hand, Left Hand (Vertical Up & Vertical Down – optional depending on Escutcheon Plate)



2212, 2217, 2218, 2242 Keys – 3", 4", 5", 6"

Model 1730, 1731, 1730Bk and 1731Bk

1730 – Restrict-A-Vision Dial and Ring

1731 – Restrict-A-Vision Key Locking Dial and Ring

- For use with all LA GARD Mechanical Combination Locks
- Top reading
- Die cast spindle – 4" (102mm)

Options

- Steel spindle – 7.50" (191mm)
- Steel spindle – 11.5" (292mm)
- Satin chrome finish and black numbers
- Black finish and white numbers



Model 1777 and 1779

1777 – Dial and Ring

1779 – Key Locking Dial and Ring

- For use with all LA GARD Mechanical Combination Locks
- Front reading
- Die cast spindle – 4" (102mm)

Options

- Steel spindle – 7.50" (191mm)
- Steel spindle – 11.5" (292mm)
- Satin chrome finish and black numbers
- Black finish with white numbers



Model 2085 and 2090

2085 – VisionGard, Dial and Ring

2090 – VisionGard, Key Locking Dial and Ring

- For use with all LA GARD mechanical combination locks
- Top reading
- Die cast spindle – 3.95" (100.33 mm)

Options

- Steel spindle – 7.50" (191mm)
- Steel spindle – 11.5" (292mm)
- Available in: Satin Chrome, Bright Brass, Bright Chrome, Black Platinum, Black and 24kt Gold



Model 2107

2107 – Small Dial and Ring

- For use with all LA GARD mechanical combination locks
- Front reading
- Die cast with satin chrome or black & white finish
- Die cast spindle – 4" (102mm)

Options

- Steel spindle – 7.50" (191mm)
- Steel spindle – 11.5" (292mm)
- Black finish with white numbers



Accessories

- 2300 – Satin Chrome Handle with Stem (2.5" x 7/16-20)
- 2300B – Black Handle with Stem (2.5" x 7/16-20)
- 2226 – Key Hole (Escutcheon Plate)



2226 Key Hole
(Escutcheon Plate)



2300 Satin Chrome Handle with Stem

How can we help you?

Any questions? We would be happy to advise you.

Contact us: sales.safelocks.us@dormakaba.com

dormakaba USA Inc. | 1525 Bull Lea Road, Suite 100 | Lexington, KY 40511 | +1 800 950 4744 | +1 888 950 4715 (tech support) | dormakaba.com

lg.mechanical.locks.june2023