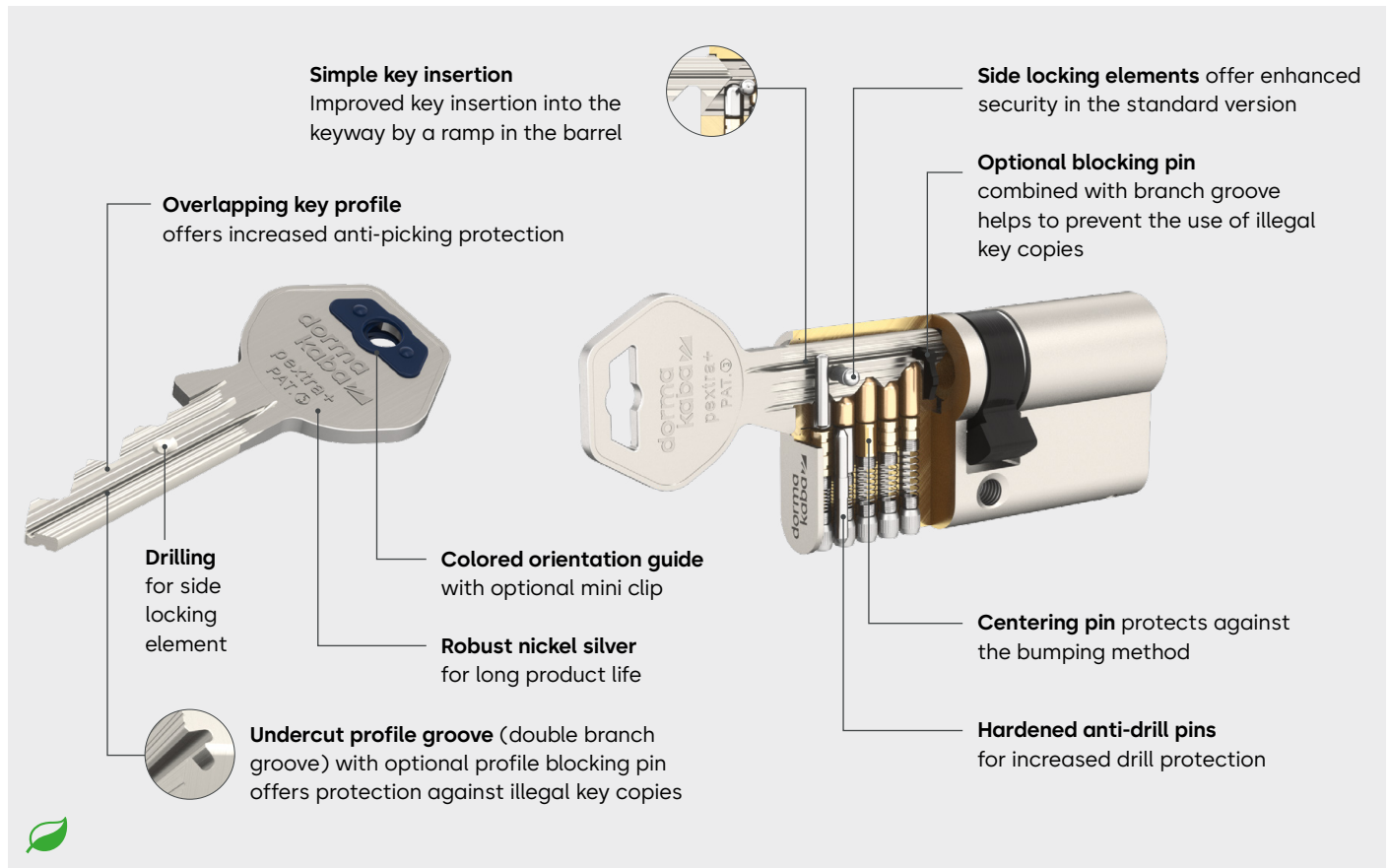


dormakaba pextra+ serrated key system



The tried-and-tested dormakaba serrated key system pextra+ provides multi-layer protection for high-security serial cylinders and master key systems. Its versatility makes it ideal for securing and organising access to any building – not only family homes and residential complexes, but also public buildings and industrial properties.

Secure

- High level of security as it complies with relevant standards, such as EN 1303 and DIN 18252.
- Overlapping key profile and undercut profile groove (branch groove) offer protection against impressing
- Enhanced drilling protection provided by additional hardened steel security elements in the lock cylinder

Flexible

- Flexible in its use with serial keying and with basic to highly complex master key system types
- Optional security elements for even greater protection
- Special functions for more access possibilities, security and convenience
- Can be combined with electronic systems

Durable

- Long-term protection by European patent EP2686510* – valid until 2032
- Our systems are additionally marked with a logo that is protected as a figurative mark and that makes them easy to identify. The figurative mark symbolises that the key is an original manufactured by dormakaba.

Security and a variety of options

Standards and certificates

- Complies with EN 1303/DIN 18252 standards
Key related security Grade 5 for cylinders with five pins and Grade 6 for cylinders with five pins + optional blocking pin and with six or seven pins
- Complies with EN 1303/DIN 18252 standards Attack Resistance Grade D with corresponding door furniture, with steel shim reinforcement in the housing or with a sacrificial cut (SBS)
- Certificates according to VdSA and VdSAZ with five pins; VdsB and VdsBZ with six pins
- Fire protection as standard; fire resistant (T90) according to standard EN 1634

Keys with different shapes and functions



Standard key
with square key bow, side locking element and optional mini clip



TrendKey with coloured clip for ergonomic opening

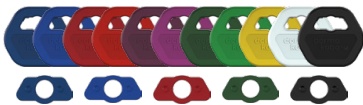


Metal clip key for ease of use with multipoint locks or security rosettes



Key with RFID transponder clip for integration into electronic access control systems

Colours as a visual aid



For the **standard key**, there are 11 colours for large clips and 5 colours for mini clips.



The **TrendKey** is available in dark blue, light blue, red, green, yellow and black.



The **metal clip key** is supplied as standard without a coloured ball. Red, green and black balls are nevertheless available as visual aids.



The **RFID transponder clips** have 6 coloured ring elements for easier identification.

Free choice of lock cylinders

The cylinder programme features a wide variety of types to choose from. You can also integrate cylinders for cabinet locks, key-operated switches or lift controls into the system. Choose between various cylinder surfaces to personalise your design.

Added value upon request:

Special functions

If you have very specific requirements for the complete master key system or individual doors, take a look at our comprehensive range of special functions and special designs. For details, please refer to the brochure "Special functions for serrated key systems".

Special functions at a glance:

- **Key left in the lock? Not a problem!**
Key ILock cylinder with key override on both sides (BSZ)
- **Attack from outside? Strong resistance from inside.**
Steel reinforcement shims version (LAM)
- **Need to change the keys? No cylinder replacement necessary.**
Self-changing cylinder (SUZ)
- **Staff access? Yes, while unlocked.**
Cylinder with personnel key (PS)

Our Sustainability Commitment

dormakaba is committed to foster a sustainable development along our entire value chain.

In order to give quantified disclosures of a product's environmental impact and its ecological footprint, dormakaba provides Environmental Product Declarations (EPDs).

Please download the EPD and read more about our sustainability commitment [here](#) or use the QR code provided.



Environmental product declaration: EPD

- Declaration number:
EPD-DOR-20210194-CBC1-EN
- In line with ISO 14025 and EN 15804+A2
- Publisher and declaration holder:
Institut Bauen und Umwelt e.V.

Any questions? We will be happy to assist you.

dormakaba International Holding AG | Hofwisenstrasse 24 | CH-8153 Rümlang | dormakaba.com

Subject to change without notice.
WN 05528351532, 08/23