

Kaba Axessor® USB safe lock

Functional Scope



Motorized lock

- Patented motorized lock with automatic locking
- Sensor monitored deadbolt and motor
- Definable bolt open time
- Standard footprint
- 2 inputs (one potential 12V, one switch)
- 2 outputs
- Input/output polarity invertible
- 10,000 Audit Events
- External power supply optional

Input unit

- High quality, robust metal input unit with USB interface
- High contrast LCD display
- 10 display languages (EN, FR, DE, NL, IT, ES, HU, PT, PL, TR)
- Battery operated (3 AA) Software

Software

- AS 280 installation software
- AS 283 SDK:
 - Software development package
 - Enables custom application
- AS 284 programming software:
- AS 286 audit software
- Network and access security dongle and password protected
- Windows operating systems (32/64 bit) XP SP3 and latest versions

Code functions

- 2 hierarchy levels: 1 master, 2 managers, 18 operators, 1 courier
- Dual mode for group / user opening
- Optional dual manager mode for programming
- Individual code / group disabling
- Duress code selectedable +/- 1
- Penalty after four incorrect codes

Authorizations

- Master/manager can/cannot open lock
- Managers can disable group
- Optional time delay override for courier code

Time functions

- Daylight savings time (DLST)
- 16-weekly locking periods
- 22 holiday and annual locking periods
- Immediate time lock [hh:mm]
- Remote disabling

Opening delay

- Time / duress delay 0 to 99 minutes
- Confirmation window 1 to 99 minutes
- Input to bypass the time delay

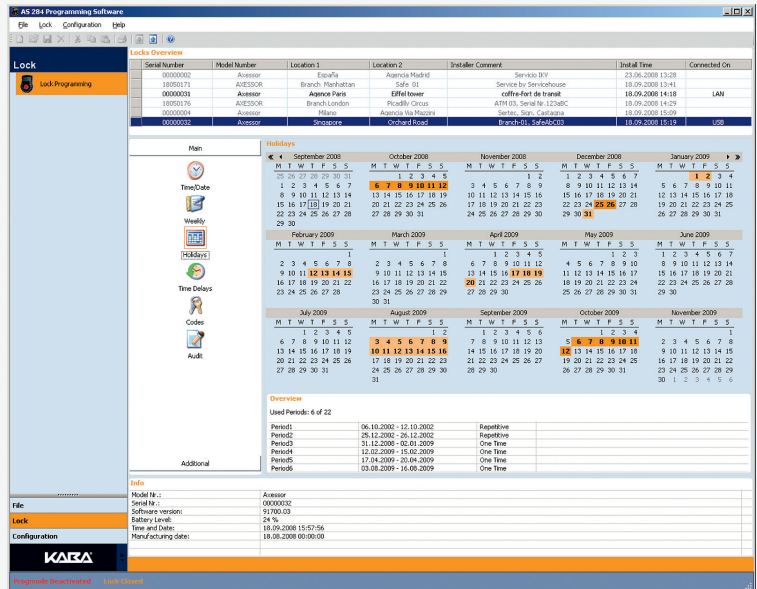
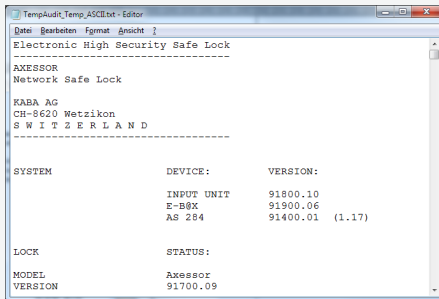
Other functions

- Door open signal (buzzer) with low / high volumes
- Battery status %

Approvals

- EN 1300 B, VdS class 2
- UL type 1
- CNPP a2p pending

Great flexibility – security of investment



Like all products of the Axessor series, the electronic safe lock Axessor[®] USB features a USB 2.0 port directly on the input unit for connection with the AS284 software for programming and audit.

Accessories

External plug-in power supply units

Plug-in power supply unit for standalone operation.
Direct connection to an Axessor[®] lock EU,
100–240 V/50–60 Hz/6 V.

Plug-in power supply unit for network operation.
Connection to an eBox (EU, 100–240 V/50–60 Hz/12 V stabilized).

Power Box for standalone operation.
Direct connection to an Axessor[®] lock, 9–24 VDC/6 VDC.

Connection cable

55/120/200 cm cable lengths available

