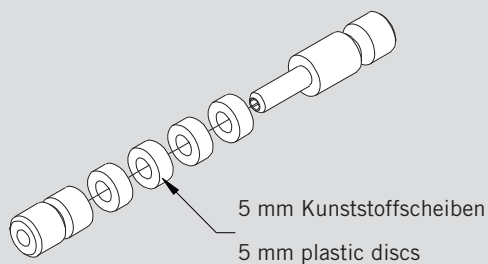


WN 800.52.231.6.32, 06/13

Beidseitige Griffstange / Türknauf für 20 / 25 / 30 / 35 / 40 mm Glasdicke
Pair of handle bar / door knob for 20 / 25 / 30 / 35 / 40 mm glass thickness

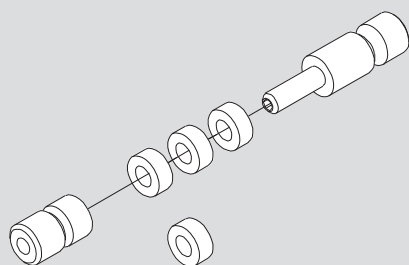
Lieferumfang:
Scope of delivery:

Vormontiert für 40 mm Glas
 Preassembled for 40 mm glass thickness

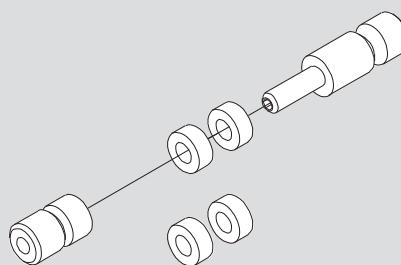


Verwendung bei geringeren Glasdicken:
In case of use for smaller glass thickness:

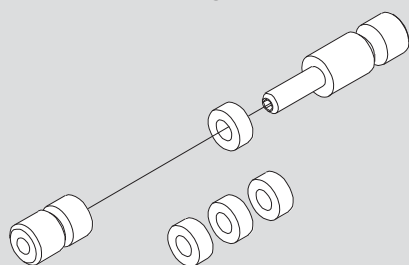
Bolzen auseinander schrauben und entsprechend der Glasdicke, Scheiben entnehmen.
 Disassemble the bolt and remove discs according to glass thickness.



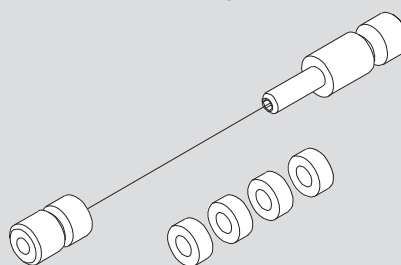
35 mm Glas
 35 mm glass



30 mm Glas
 30 mm glass



25 mm Glas
 25 mm glass



20 mm Glas
 20 mm glass

Griffstange gemäß Montageanleitung an das Glas montieren.
 Please follow the handle bar assembly instruction.

Änderungen vorbehalten
 Subject to change without notice